

## Product datasheet for **RC212919**

### **CRMP1 (NM\_001014809) Human Tagged ORF Clone**

#### **Product data:**

Product Type:	Expression Plasmids
Product Name:	CRMP1 (NM_001014809) Human Tagged ORF Clone
Tag:	Myc-DDK
Symbol:	CRMP1
Synonyms:	CRMP-1; DPYSL1; DRP-1; DRP1; ULIP-3
Mammalian Cell Selection:	Neomycin
Vector:	pCMV6-Entry (PS100001)
E. coli Selection:	Kanamycin (25 ug/mL)



[View online »](#)

**ORF Nucleotide Sequence:**

>RC212919 representing NM\_001014809  
 Red=Cloning site Blue=ORF Green=Tags(s)

TTTTGTAATACGACTCACTATAGGGCGGCCGGAATTCGTCGACTGGATCCGGTACCGAGGAGATCTGCC  
 GCC**CGGATCGCC**

ATGGCGGACCGGGCGCGCGTGGAAACACCGAGGACGACCTGCCCGTGTACCTGGCGCGGCCGGCAGCG  
 CGGCGCAGACCCCGGCCAGAAGTACGGCGGCATGTTCCGCCGGTGGAGGGCGCTACGAGAACAAGAC  
 CATCGACTTCGACGCCTACAGTGTGGGCGCGCGCTCGGCGCGCACGCGCGCAGCGCTGGCCGGCC  
 GACGCGGTGGGCTGCCAGGGCCGGGAGGCAGCGAGGACACGGCCAGCGACGTGAGCGAGCCCTCGGGCT  
 CCGCGGTGAGCTCTCCCGGAGAGCGCGACGAGCGGCCCGCGACGCTGCGCATCCGCCGCCCGCGCCCCG  
 CGACCTGCCCTCGGCCGGACAATGGCCAGAGTGACCGACTCCTCATCAAAGGTGGACGGATCATCAAC  
 GATGACCAATCCCTTTATGCTGACGTCTACCTGGAGGATGGACTTATCAAACAAATAGGAGAGAACTTAA  
 TCGTTCCTGGTGGAGTGAAGACCATTGAAGCCAACGGGCGGATGGTTATCCCGGAGGTATTGATGTCAA  
 CACGTACCTGCAGAAGCCCTCCAGGGGATGACTGCGGCTGATGACTTCTCCAAGGGACCAGGGCGGCA  
 CTGGTGGGCGGGACCACGATGATCATTGACCATGTTGTTCTGAACCTGGGTCCAGCCTACTGACCTCTT  
 TCGAGAAGTGGCACGAAGCAGCTGACACCAAATCCTGCTGTGATTACTCCCTCCAGTGGACATCACAAG  
 CTGGTACGATGGCGTTCGGGAGGAGCTGGAGGTGCTGGTGCAGGACAAAGGCGTCAATTCCTTCAAAGTC  
 TACATGGCCTATAAGGATGTCTACCAAATGTCCGACAGCCAGCTCTATGAAGCCTTTACCTTCTTAAAGG  
 GCCTGGGAGCTGTGATCTTGGTCCATGCAGAAAATGGAGATTTGATAGCTCAGGAACAAAAGCGGATCCT  
 GGAGATGGGCATCACGGTCCCGAGGGCCATGCCCTGAGCAGACCTGAAGAGCTGGAGGCCGAGGGCGGTG  
 TTCCGGGCCATCACCATTGCGGGCCGGATCAACTGCCCTGTGTACATACCAAGGTCATGAGCAAGAGTG  
 CAGCCGACATCATCGCTCTGGCCAGGAAGAAAGGCCCTAGTTTTTGGAGAGCCATTGCCGCCAGCTT  
 GGGGACCGATGGCACCCATTACTGGAGCAAGAAGTGGCCAAAGGCTGCGGCGTTGCTGACTTCCCTCCC  
 CTGAGCCCGGACCTACCACGCCGACTACTTGACCTCCCTACTGGCCTGTGGGACTTGACAGGTACACAG  
 GCAGCGGCCACTGTCCTACAGCACTGCCCAGAAGGCGTGGCAAGGACAACTTTACCCTGATCCCCGA  
 GGGTGTCAACGGGATAGAGGAGCGGATGACGGTCGTCTGGGACAAGGCGGTGGCTACTGGCAAAATGGAT  
 GAGAACCAGTTTGTGCTGTCCAGCACCAATGCAGCCAAGATCTTAACTGTACCAAGGAAAGGGC  
 GGATTGCCGTGGGCTCGGATGCCGACGTGGTCACTGGGACCCCGACAAGTTGAAGACCATAACAGCCAA  
 AAGTCACAAGTCGGCGGTGGAGTACAACATCTTCGAGGGTATGGAGTGCCACGGCTCCCACTAGTGGTC  
 ATCAGCCAGGGCAAGATCGTCTTTGAAGACGGAACATCAACGTCAACAAGGGCATGGGCCGCTTCAATC  
 CGCGGAAGGCGTTCCCGGAGCACCTGTACCAGCGCGTCAAATCAGGAATAAGGTTTTTGGATTGCAAGG  
 GTTTTCCAGGGCATGTATGACGGTCTGTGTACGAGGTACCAGCTACACCCAAATATGCAACTCCCGCT  
 CCTTACGCCAAATCTTCGCTTCTAAACACCAGCCCCACCCATCAGAAACCTCCACCAGTCCAACCTTCA  
 GCTTATCAGGTGCCAGATAGATGACAACAATCCAGGGCGACCGGCCACCGCATCGTGGCGCCCTGG  
 TGGCCGCTCAACATCACCAGCCTCGGT

**ACGCGT**ACGCGGGCGCTCGAGCAGAACTCATCTCAGAAGAGGATCTGGCAGCAAATGATATCCTGGATT  
 ACAAGGATGACGACGATAAGGTTTAA

**Protein Sequence:** >RC212919 representing NM\_001014809  
Red=Cloning site Green=Tags(s)

```
MADRRRAWNTEDDLPVYLARPGSAAQTPRQKYGGMFAAVEGAYENKTIDFDAYSVGRRSARTPRSAGRP
DAVGLPGPGGSEDTASDVSEPSGSAVSSPGERDERPPTLRIRRPAPRDLPLGRDNGQSDRLLIKGGRIIN
DDQSLYADVYLEDGLIKQIGENLIVPGGVKTIENGRMIVIPGGIDVNTYLQKPSQGMTAADFFQGTRAA
LVGGTTMIIDHVPEPGSSLLTSFEKWHEAADTKSCCDYSLHVDITSWYDGVREELEVLDKGVNSFQV
YMAYKDVYQMSDSL YEAF TFLKGLGAVILVHAENGDLIAQEQRILEMGITGPEGHASRPEELEAEAV
FRAITIAGRINCPVYITKVMSKSAADIIALARKKGPLVFGEPIAASLGTGTHYWSKNWAKAAAFVTSP
LSPDPTTDPDYL TSL LACGDLQVTGSGHCPYSTAQKAVGKDNFTL IPEGVNGIEERMTVVWDKAVATGKMD
ENQFVAVTSTNAAKIFNLYPRKGRIAVGSDADVIWDPDKLKTITAKSHKSAVEYNI FEGMECHGSPV
ISQGKIVFEDGNINVNKGMRGIPRKAFPEHL YQRVKIRNKV FGLQGVSRGMYDGPVVEVPATPKYATPA
PSAKSSPSKHQPPP I RN LHQS N F S L S G A Q I D D N N P R R T G H R I V A P P G G R S N I T S L G
```

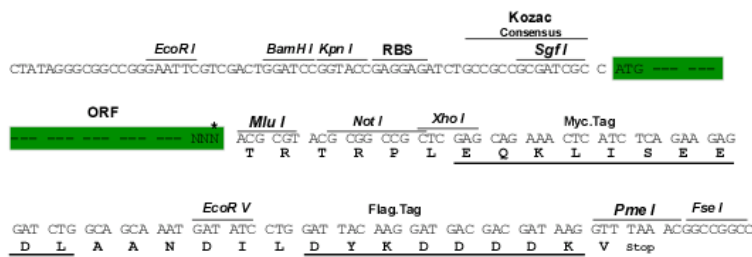
TRTRPLEQKLISEEDLAANDILDYKDDDDKV

**Chromatograms:** [https://cdn.origene.com/chromatograms/mk8072\\_h09.zip](https://cdn.origene.com/chromatograms/mk8072_h09.zip)

**Restriction Sites:** SgfI-MluI

**Cloning Scheme:**

Cloning sites used for ORF Shuttling:



\* The last codon before the Stop codon of the ORF

**ACCN:** NM\_001014809

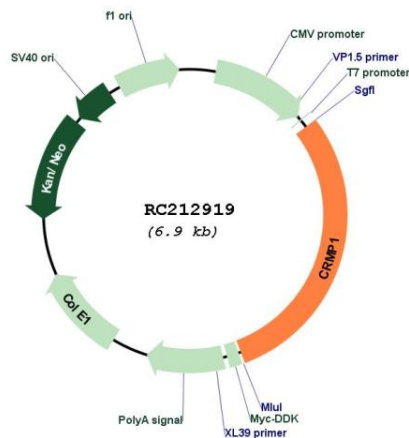
**ORF Size:** 2058 bp

**OTI Disclaimer:** The molecular sequence of this clone aligns with the gene accession number as a point of reference only. However, individual transcript sequences of the same gene can differ through naturally occurring variations (e.g. polymorphisms), each with its own valid existence. This clone is substantially in agreement with the reference, but a complete review of all prevailing variants is recommended prior to use. [More info](#)

**OTI Annotation:** This clone was engineered to express the complete ORF with an expression tag. Expression varies depending on the nature of the gene.

- Components:** The ORF clone is ion-exchange column purified and shipped in a 2D barcoded Matrix tube containing 10ug of transfection-ready, dried plasmid DNA (reconstitute with 100 ul of water).
- Reconstitution Method:**
1. Centrifuge at 5,000xg for 5min.
  2. Carefully open the tube and add 100ul of sterile water to dissolve the DNA.
  3. Close the tube and incubate for 10 minutes at room temperature.
  4. Briefly vortex the tube and then do a quick spin (less than 5000xg) to concentrate the liquid at the bottom.
  5. Store the suspended plasmid at -20°C. The DNA is stable for at least one year from date of shipping when stored at -20°C.
- RefSeq:** [NM\\_001014809.3](#)
- RefSeq Size:** 3155 bp
- RefSeq ORF:** 2061 bp
- Locus ID:** 1400
- UniProt ID:** [Q14194](#)
- Cytogenetics:** 4p16.2
- MW:** 74.1 kDa
- Gene Summary:** This gene encodes a member of a family of cytosolic phosphoproteins expressed exclusively in the nervous system. The encoded protein is thought to be a part of the semaphorin signal transduction pathway implicated in semaphorin-induced growth cone collapse during neural development. Alternative splicing results in multiple transcript variants. [provided by RefSeq, Jul 2008]

**Product images:**



Circular map for RC212919