

## Product datasheet for **RC212918**

### PPM1B (NM\_002706) Human Tagged ORF Clone

#### Product data:

Product Type:	Expression Plasmids
Product Name:	PPM1B (NM_002706) Human Tagged ORF Clone
Tag:	Myc-DDK
Symbol:	PPM1B
Synonyms:	PP2C-beta; PP2C-beta-X; PP2CB; PP2CBETA; PPC2BETAX
Mammalian Cell Selection:	Neomycin
Vector:	pCMV6-Entry (PS100001)
E. coli Selection:	Kanamycin (25 ug/mL)



[View online »](#)

**ORF Nucleotide Sequence:**

>RC212918 representing NM\_002706  
 Red=Cloning site Blue=ORF Green=Tags(s)

TTTTGTAATACGACTCACTATAGGGCGGCCGGAATTCGTCGACTGGATCCGGTACCGAGGAGATCTGCC  
 GCC**CGCATCGCC**

ATGGGTGCATTTTTGGATAAACCCAAAACCTGAAAAACATAATGCTCATGGTCTGGGAATGGTTTACGTT  
 ATGGCCTGAGCAGCATGCAAGGATGGAGAGTGGAAATGGAAGATGCACACACAGCTGTTGTAGGTATTCC  
 TCACGGCTTGAAGACTGGTCATTTTTGCAGTTTATGATGGTCATGCTGGATCCCGAGTGGCAAATTAC  
 TGCTCAACACATTTATTAGAACACATCACTACTAACGAAGACTTTAGGGCAGCTGAAAAATCAGGATCTG  
 CTCTTGAGCTTTCAGTGGAAAAATGTTAAGAATGGTATCAGAACTGGATTTTTGAAAATTGATGAATACAT  
 GCGTAACTTTTAGACCTCAGAAACGGGATGGACAGGAGTGGTTCAACTGCAGTGGGAGTTATGATTTC  
 CCTAAGCATATCTACTTTTCACTGTGGTGATTACGTGCTGTTCTGTATAGGAATGGACAAGTCTGCT  
 TTTCTACCGAGGATCACAAACCTTGCAATCCAAGGAAAAGGAGCGAATCCAAAATGCAGGAGGCAGCGT  
 GATGATACAACGTGTTAATGGTTCATTAGCAGTATCTCGTCTCTGGGGACTATGATTACAAGTGTGT  
 GATGGCAAGGGCCCAACAGAACAACCTGTTTCTCCAGAGCCTGAGGTTTATGAAAATTTAAGAGCAGAAG  
 AGGATGAATTTATCATCTTGGCTTGTGATGGGATCTGGGATGTTATGAGTAATGAGGAGCTCTGTGAATA  
 TGTTAAATCTAGGCTTGGGATCTGATGACCTGGAAAATGTGTGCAATGGGTAGTGGACACTTGTTTA  
 CACAAGGGAAGTCGAGATAACATGAGTATTGTACTAGTTTGCTTTTCAAATGCTCCCAAGGTCTCAGATG  
 AAGCGGTGAAAAAAGATTAGAGTTGGATAAGCACTTGGAAATCACGGGTTGAAGAGATTATGGAGAAGTC  
 TGGCGAGGAAGGAATGCCTGATCTTGCCATGTATGCGCATCTGTCTGCAGAAAATATCCCAAATTTG  
 CCTCTGGGGAGGTCTTGCTGGCAAGCGTAATGTTATTGAAGCTGTTTATAGTAGACTGAATCCACATA  
 GAGAAAGTATGGGGCCCTCCGATGAAGCAGAGGAAAGTGGATCACAGGAAAATTTGGTGAAGCTCAG  
 GCAAATGAGAATTAATCATAGGGGAAACTACCGACAACCTTGGAGGAGATGCTGACTAGTTACAGGCTA  
 GCTAAAGTAGAGGAGAAGAAAGCCCTGCTGAACCAGCTGCCACAGCTACTTCTCGAACAGTGATGCTG  
 GAAACCCAGTGACAATGCAGGAAAGCCATACTGAATCAGAAAGTGGTCTTCTGTAATTAGACAGCTCTAA  
 TGAAGATGCAGGGACAAAGATGAGTGGTAAAAAATA

**ACGCGT**ACGCGGCCGCTCGAGCAGAAACTCATCTCAGAAGAGGATCTGGCAGCAAATGATATCTGGATT  
 ACAAGGATGACGACGATAAGGTTTAA

**Protein Sequence:**

>RC212918 representing NM\_002706  
 Red=Cloning site Green=Tags(s)

MGAFLDKPKTEKHNAHGAGNGLRYGLSSMQGWRVEMEDAHTAVVGIIPHGLEDWSFFAVYDGHAGSRVANY  
 CSTHLLLEHITTNEFDRAAGKSGSALEL SVENVKNGIRTGFLKIDEYMRNFSDLRNGMDRSGSTAVGVMIS  
 PKHIYFINCGDSRAVLYRNGQVCFSTQDHKPCNPREKERIQNAGGSVMIQRVNGSLAVSRALGDYDYKCV  
 DGKGPTEQLVSPEPEVYEILRAEDEFIILACDGIWDVMSNEELCEYVKSRLLEVSDDENVCNWWVDTCL  
 HKGSRDNMSIVLVCFSNAPKVSDEAVKDKSELDKHLESRVEEIMEKSGEEMPDLAHV MRILSAENIPNL  
 PPGGGLAGKRNVIEAVYSRLNPHRESDGASDEAEESGSQGKLV EALRQMRINHRGNRQLLEEMLT SYRL  
 AKVEGEESPAEPAATATSSNSDAGNPVTMQESHTESESGLAELDSSNEDAGTKMSGEKI

**TR**TRPLEQKLI SEEDLAANDILDYKDDDDKV

**Chromatograms:**

[https://cdn.origene.com/chromatograms/mk6095\\_a07.zip](https://cdn.origene.com/chromatograms/mk6095_a07.zip)

**Restriction Sites:**

Sgfl-MluI



**Domains:** PP2C

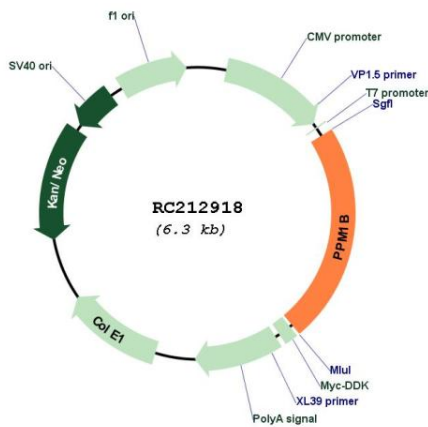
**Protein Families:** Druggable Genome, Phosphatase, Stem cell - Pluripotency

**Protein Pathways:** MAPK signaling pathway

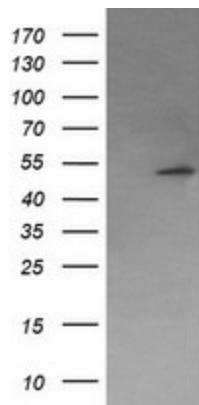
**MW:** 52.5 kDa

**Gene Summary:** The protein encoded by this gene is a member of the PP2C family of Ser/Thr protein phosphatases. PP2C family members are known to be negative regulators of cell stress response pathways. This phosphatase has been shown to dephosphorylate cyclin-dependent kinases (CDKs), and thus may be involved in cell cycle control. Overexpression of this phosphatase is reported to cause cell-growth arrest or cell death. Alternative splicing results in multiple transcript variants encoding different isoforms. Additional transcript variants have been described, but currently do not represent full-length sequences. [provided by RefSeq, Jul 2008]

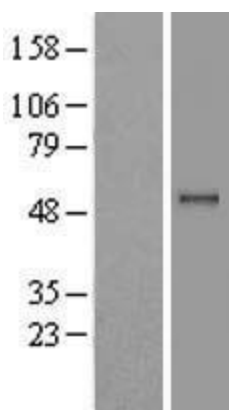
**Product images:**



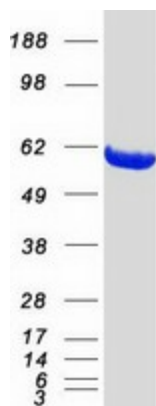
Circular map for RC212918



HEK293T cells were transfected with the pCMV6-ENTRY control (Cat# [PS100001], Left lane) or pCMV6-ENTRY PPM1B (Cat# RC212918, Right lane) cDNA for 48 hrs and lysed. Equivalent amounts of cell lysates (5 ug per lane) were separated by SDS-PAGE and immunoblotted with anti-PPM1B(Cat# [TA502866]). Positive lysates [LY419156] (100ug) and [LC419156] (20ug) can be purchased separately from OriGene.



Western blot validation of overexpression lysate (Cat# [LY419156]) using anti-DDK antibody (Cat# [TA50011-100]). Left: Cell lysates from untransfected HEK293T cells; Right: Cell lysates from HEK293T cells transfected with RC212918 using transfection reagent MegaTran 2.0 (Cat# [TT210002]).



Coomassie blue staining of purified PPM1B protein (Cat# [TP312918]). The protein was produced from HEK293T cells transfected with PPM1B cDNA clone (Cat# RC212918) using MegaTran 2.0 (Cat# [TT210002]).