

Product datasheet for **RC212917**

OPA1 (NM_130835) Human Tagged ORF Clone

Product data:

Product Type:	Expression Plasmids
Product Name:	OPA1 (NM_130835) Human Tagged ORF Clone
Tag:	Myc-DDK
Symbol:	OPA1
Synonyms:	BERHS; largeG; MGM1; MTDPS14; NPG; NTG
Mammalian Cell Selection:	Neomycin
Vector:	pCMV6-Entry (PS100001)
E. coli Selection:	Kanamycin (25 ug/mL)



[View online »](#)

ORF Nucleotide Sequence:

>RC212917 representing NM_130835
 Red=Cloning site Blue=ORF Green=Tags(s)

TTTTGTAATACGACTCACTATAGGGCGGCCGGGAATTCGTCGACTGGATCCGGTACCGAGGAGATCTGCC
 GCC**CGGATCGCC**

ATGTGGCGACTACGTGGGCCGCTGTGGCCTGTGAGTCTGCCAGTCTTTAGTGAACACAGCTCTGGAA
 TAAAAGGAAGTTTACCACTACAAAACTACATCTGGTTTCACGAAGCATTATCATTACATCATCTTAC
 CTTAAAGCTTCAACGACCCCAATTAAGGACATCCTTTTCAGCAGTTCTCTCTCTGACAAAACCTTCTTTTA
 CGTAAACTGAAATTCTCTCCAATTAATATGGCTACCAGCCTCGCAGGAATTTTGGCCAGCAAGATTAG
 CTACGAGACTCTTAAACTTCGCTATCTCATACTAGGATCGGCTGTTGGGGTGGCTACACAGCCAAAA
 GACTTTTGATCAGTGGAAAGATATGATACCGGACCTTAGTGAATATAAATGGATTGTGCCTGACATTGTG
 TGGGAAATTGATGAGTATATCGATTTTGGTCACAAATTGGTTAGTGAAGTCATAGGAGCTTCTGACCTAC
 TTCTCTTGTAGGTTCTCGGAAGAAACGGCGTTAGAGCAACAGATCGTGGATCTGAAAGTGACAAGCA
 TTTTAGAAAGGGTCTGCTTGGTGGTCTCATTCTTTACAACAACAAATTCAGAGCATGAAGAGGAAGCG
 CGCAGAGCCGCTGGCCAATATAGCACGAGCTATGCCCAACAGAAGCGCAAGGTGTGACACAAAGAGAAAA
 TTGACCAACTTCAGGAAGAACTTCTGCACACTCAGTTGAAGTATCAGAGAATCTTGAACGATTAGAAAA
 GGAGAACAAGAAATTGAGAAAATTAGTATTGCAGAAAGATGACAAAGGCATTATCATAGAAAGCTTAAG
 AAATCTTTGATTGACATGATTCTGAAGTTCTTGATGTTCTCTGATTATGATGCCAGTTATAATACGC
 AAGATCATCTGCCACGGGTTGTTGTGGTGGAGATCAGAGTGTGGAAAGACTAGTGTGTTGAAATGAT
 TGCCCAAGCTCGAATATCCCAAGAGGATCTGGGGAGATGATGACACGTTCTCCAGTTAAGGTGACTCTG
 AGTGAAGTCTCACCATGTGGCCCTATTTAAAGATAGTTCTCGGAGTTTGTACTTACCAAGAAAGAAG
 ATCTTGCAGCATTAAAGACATGAAATAGAATCTCGAATGAGGAAAAATGTGAAAGAAGGCTGTACCTTAG
 CCCTGAGACCATATCCTTAAATGTAAGGCGCCCTGGACTACAGAGGATGGTGTGTTGACTTACCAGGT
 GTGATTAATACTGTGACATCAGGATGGCTCCTGACACAAGGAAACTATTTTTCAGTATCAGCAAAGCTT
 ACATGCAGAATCCTAATGCCATCATACTGTGATTCAAGATGGATCTGTGGATGTGAACGCAGTATTGT
 TACAGACTTGGTCAGTCAATGGACCCTCATGGAAGGAGAACCATATTCGTTTTGACCAAAGTAGACCTG
 GCAGAGAAAAATGAGCCAGTCCAAGCAGGATTCAGCAGATAATTGAAGGAAAGCTTCCCAATGAAAG
 CTTTAGGTTATTTGCTGTTGTAACAGGAAAAGGGAACAGCTCTGAAAGCATTGAAGCTATAAGAGAATA
 TGAAGAAGAGTTTTTTTTCAGAATCAAAGCTCCTAAAGACAAGCATGCTAAAGGCACACCAAGTGACTACA
 AGAAATTAAGCCTTGCAGTATCAGACTGCTTTTGGAAAATGGTACGAGAGTCTGTTGAACAACAGGCTG
 ATAGTTTCAAAGCAACAGTTTTAACCTTGAAACTGAATGGAAGAATAACTATCCTCGCCTGCGGGAAC
 TGACCGGAATGAACTATTTGAAAAGCTAAAAATGAAATCCTTGATGAAGTTATCAGTCTGAGCCAGGTT
 ACACAAAACATTGGGAGGAAATCCTTCAACAATCTTTGTGGGAAAGAGTATCAACTCATGTGATTGAAA
 ACATCTACCTTCCAGTGCAGCAGACCATGAATTCAGGAACTTTTAACCCACAGTGGATATCAAGCTTAA
 ACAGTGGACTGATAAAACAACTTCTAATAAAGCAGTAGAGGTTGCTTGGGAGACCCTACAAGAAGAAATTT
 TCCCGCTTATGACAGAACCAGGAAAGGAAAGAGCATGATGACATATTTGATAAATTAAGAGGCCGTTA
 AGGAAGAAAGTATTAACGACACAAGTGAATGACTTTGCGGAGGACAGCTTGGGGTTATTCAACACAA
 TGCTTTGGAAGACCGATCCATATCTGATAAACAGCAATGGGATGCAGCTATTTATTTTATGGAAGAGGCT
 CTGCAGGCTCGTCTCAAGGATACTGAAAATGCAATTGAAAACATGGTGGTCCAGACTGGAAAAAGAGGT
 GGTATACTGGAAGAATCGGACCAAGAACAGTGTGTTCACAATGAAACCAAGAATGAATTGGAGAAGAT
 GTTGAAATGTAATGAGGAGCACCCAGCTTATCTTGCAAGTGAATAAACCACAGTCCGGAAGAACCTT
 GAATCCCAGGAGTAGAAGTAGATCCAAGCTTGATTAAGGATACTTGGCATCAAGTTTATAGAAGACATT
 TTTTAAAAACAGCTCTAAACCATGTAACCTTTGTCGAAGAGGTTTTTACTACCAAAGGCATTTTGT
 AGATTCTGAGTTGGAATGCAATGATGTGGTCTTGTGTTTGGCGTATACAGCGCATGCTTGTCTATCACC
 GCAATAACTTTAAGGCAACAACCTTACAATACTGAAGTTAGGCGATTAGAGAAAAATGTTAAAGAGGTATTGG
 AAGATTTTGTGAAGATGGTGAAGAAGATTAATTGCTTACTGGTAAACGCGTTCAACTGGCGGAAGA
 CCTCAAGAAAGTTAGAGAAATCAAGAAAACTTGATGCTTTCATTGAAGCTCTTCATCAGGAGAAA

AG**CGGACCG**ACGCGTACGCGGCCGCTCGAGCAGAAAACCTCATCTCAGAAGAGGATCTGGCAGCAAATGATATCC
 TGGATTACAAGGATGACGACGATAAGGTTTAA

Protein Sequence: >RC212917 representing NM_130835
 Red=Cloning site Green=Tags(s)

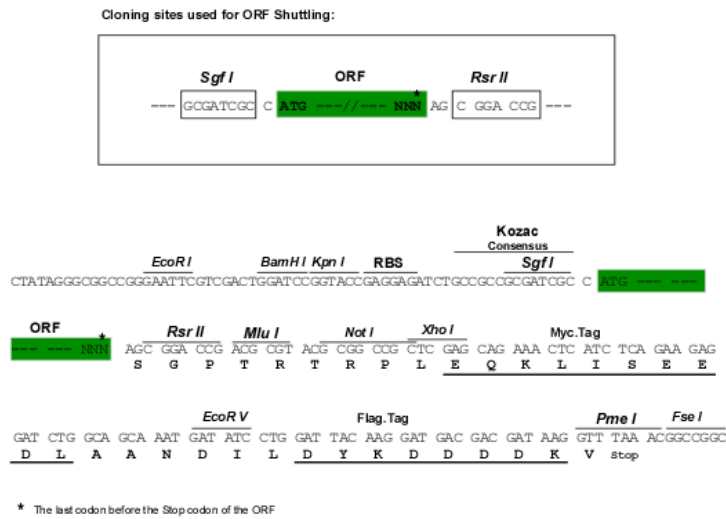
MWRLRRAAVACEVCQSLVKHSSGIKGSPLQLHLVSRSIYHSHHPTLKLQRPQLRTSFQFSSLTNLPL
 RKLKFSPIKYGYQPRNFWPARLATRLLKLRYLILGSAVGGGYTAKKTFDQWKMIPDLSEYKWIVPDIV
 WEIDEYIDFGHKLVSSEVIGASDLLLLLSPEETAFRATDRGSESDKHFRKGLLGELILLQQIQEHEEEA
 RRAAGQYSTSYAQKRKVSDEKIDQLQEELLHTQLKYQRILERLEKENKELRKLVLQKDDKGIHHRKLL
 KSLIDMYSEVLDVLSDYDASYNTQDHLPRVVVVGDSAGKTSVLEEMIAQARIFPRGSGEMMTRSPVKVTL
 SEGPHHVALFKDSSREFDLTKEEDLAALRHEIELRMRKNVKEGCTVSPETISLNVKPGPLQRMVLDLPG
 VINTVTSGMADTKETIFSIKAYMNPNAIILCIQDGSVDAERSIVTDLVSQMDPHGRRTRIFVLTKVDL
 AEKNVASPSRIQQIIEGKLFPMKALGYFAVVTGKGNSSSEIEAIREYEEFFQNSKLLKTSMLKAHQVTT
 RNL SLAVSDCFWKMVRESVEQQADSFKATRFNLETEWKNYPRLRELDNELFEKAKNEILDEVISLSQV
 TPKHWEEILQQSLWERVSTHVIENIYLPAQTMNSGTFNTTVDIKLKQWTDKQLPNKAVEVAVETLQEEF
 SRFMTEPKGKEHDDIFDKLKEAVKEESIKRHKWNDFAEEDSLRVIQHNALEDRSISDKQQWDAIYFMEEA
 LQARLKD TENAIENMVGPDWKKRWLYWKNRTQEQCVHNETKNELEKMLKCNEEHPAYLASDEITTVRKNL
 ESRGVEVDP SLIKD TWHQYRRHFLKTALNHCNLCRRGFYYYQRHFVDSLEECNDVVLFWRIQRMLAITA
 NTLRQQLTNTVRRLEKNVKEVLEDFAEDEGKKIKLLTGKRVQLAEDLKKVREIQEKLDAFIEALHQEK

SGPTRRRLEQKLI SEEDLAANDILDYKDDDDKV

Chromatograms: https://cdn.origene.com/chromatograms/mk6625_d08.zip

Restriction Sites: SgfI-RsrII

Cloning Scheme:

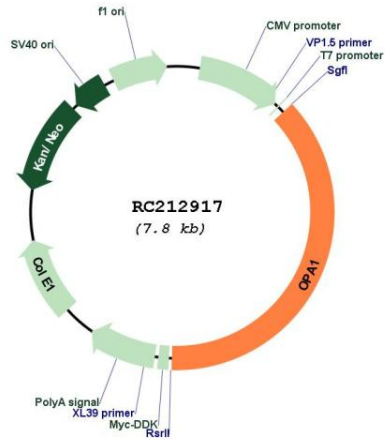


ACCN: NM_130835

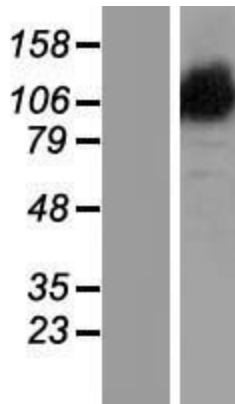
ORF Size: 2937 bp

OTI Disclaimer:	The molecular sequence of this clone aligns with the gene accession number as a point of reference only. However, individual transcript sequences of the same gene can differ through naturally occurring variations (e.g. polymorphisms), each with its own valid existence. This clone is substantially in agreement with the reference, but a complete review of all prevailing variants is recommended prior to use. More info
OTI Annotation:	This clone was engineered to express the complete ORF with an expression tag. Expression varies depending on the nature of the gene.
Components:	The ORF clone is ion-exchange column purified and shipped in a 2D barcoded Matrix tube containing 10ug of transfection-ready, dried plasmid DNA (reconstitute with 100 ul of water).
Reconstitution Method:	<ol style="list-style-type: none">1. Centrifuge at 5,000xg for 5min.2. Carefully open the tube and add 100ul of sterile water to dissolve the DNA.3. Close the tube and incubate for 10 minutes at room temperature.4. Briefly vortex the tube and then do a quick spin (less than 5000xg) to concentrate the liquid at the bottom.5. Store the suspended plasmid at -20°C. The DNA is stable for at least one year from date of shipping when stored at -20°C.
RefSeq:	NM_130835.1 , NP_570848.1
RefSeq Size:	5921 bp
RefSeq ORF:	2940 bp
Locus ID:	4976
Cytogenetics:	3q29
MW:	113.5 kDa
Gene Summary:	The protein encoded by this gene is a nuclear-encoded mitochondrial protein with similarity to dynamin-related GTPases. The encoded protein localizes to the inner mitochondrial membrane and helps regulate mitochondrial stability and energy output. This protein also sequesters cytochrome c. Mutations in this gene have been associated with optic atrophy type 1, which is a dominantly inherited optic neuropathy resulting in progressive loss of visual acuity, leading in many cases to legal blindness. [provided by RefSeq, Aug 2017]

Product images:



Circular map for RC212917



Western blot validation of overexpression lysate (Cat# [LY408910]) using anti-DDK antibody (Cat# [TA50011-100]). Left: Cell lysates from untransfected HEK293T cells; Right: Cell lysates from HEK293T cells transfected with RC212917 using transfection reagent MegaTran 2.0 (Cat# [TT210002]).