

## Product datasheet for **RC212908**

### NCALD (NM\_001040628) Human Tagged ORF Clone

#### Product data:

Product Type: Expression Plasmids  
 Product Name: NCALD (NM\_001040628) Human Tagged ORF Clone  
 Tag: Myc-DDK  
 Symbol: NCALD  
 Mammalian Cell Selection: Neomycin  
 Vector: pCMV6-Entry (PS100001)  
 E. coli Selection: Kanamycin (25 ug/mL)  
 ORF Nucleotide Sequence: >RC212908 ORF sequence  
 Red=Cloning site Blue=ORF Green=Tags(s)

TTTTGTAATACGACTCACTATAGGGCGGCCGGAATTCGTCGACTGGATCCGGTACCGAGGAGATCTGCC  
 GCC**CGATCGCC**

ATGGGGAAACAGAACAGCAAGCTGCGCCCGGAGGTCATGCAGGACTTGCTGGAAAGCACAGACTTTACAG  
 AGCATGAGATCCAGGAATGGTATAAAGGCTTCTTGAGAGACTGCCCCAGTGGACATTTGTCAATGGAAGA  
 GTTTAAGAAAATATATGGGAACTTTTCCCTTATGGGGATGCTTCCAAATTTGCAGAGCATGTCTCCGC  
 ACCTTCGATGCAAATGGAGATGGGACAATAGACTTTAGAGAATTCATCATCGCCTTGAGTGTAACTCGA  
 GGGGAAGCTGGAGCAGAAGCTGAAATGGGCCTTCAGCATGTACGACCTGGACGAAATGGCTATATCAG  
 CAAGGCAGAGATGCTAGAGATCGTGCAGGCAATCTATAAGATGGTTTCCCTCTGTAATGAAAATGCCTGAA  
 GATGAGTCAACCCAGAGAAAAGAACAGAAAAGATCTTCCGCCAGATGGACACCAATAGAGACGGAAAAC  
 TCTCCATGGAAGAGTTCATCCGAGGAGCCAAAAGCGACCCGTCATTGTGCGCCTCTGCAGTGCAGCC  
 GAGCAGTGCCGGCCAGTTC

**ACGCGT**ACGCGGCCGCTCGAGCAGAACTCATCTCAGAAGAGGATCTGGCAGCAAATGATATCCTGGATT  
 ACAAGGATGACGACGATAAGGTTTAA

Protein Sequence: >RC212908 protein sequence  
 Red=Cloning site Green=Tags(s)

MGKQNSKLRPEVMQDLLESTDFTEHEIQEWYKGFRLDCPSGHL SMEEFKKIYGNFFPYGDASKFAEHVFR  
 TFDANGDGTIDFREFIIALS SVTSRGKLEQKLK WAFSMYDL DNGYISKAEMLEIVQAIYKMVSSVMKMP  
 DESTPEKRTEKIFRQMDTNRDGKLSMEEFIRGAKSDPSIVRLLQCDPSSAGQF

**TR**TRPLEQKLI SEEDLAANDILDYKDDDDKV

Chromatograms: [https://cdn.origene.com/chromatograms/mk6320\\_g08.zip](https://cdn.origene.com/chromatograms/mk6320_g08.zip)



[View online »](#)

**Restriction Sites:** SgfI-MluI

**Cloning Scheme:**



**ACCN:** NM\_001040628

**ORF Size:** 579 bp

**OTI Disclaimer:** The molecular sequence of this clone aligns with the gene accession number as a point of reference only. However, individual transcript sequences of the same gene can differ through naturally occurring variations (e.g. polymorphisms), each with its own valid existence. This clone is substantially in agreement with the reference, but a complete review of all prevailing variants is recommended prior to use. [More info](#)

**OTI Annotation:** This clone was engineered to express the complete ORF with an expression tag. Expression varies depending on the nature of the gene.

**Components:** The ORF clone is ion-exchange column purified and shipped in a 2D barcoded Matrix tube containing 10ug of transfection-ready, dried plasmid DNA (reconstitute with 100 ul of water).

**Reconstitution Method:**

1. Centrifuge at 5,000xg for 5min.
2. Carefully open the tube and add 100ul of sterile water to dissolve the DNA.
3. Close the tube and incubate for 10 minutes at room temperature.
4. Briefly vortex the tube and then do a quick spin (less than 5000xg) to concentrate the liquid at the bottom.
5. Store the suspended plasmid at -20°C. The DNA is stable for at least one year from date of shipping when stored at -20°C.

**RefSeq:** [NM\\_001040628.1](#), [NP\\_001035718.1](#)

**RefSeq Size:** 3729 bp

**RefSeq ORF:** 582 bp

**Locus ID:** 83988

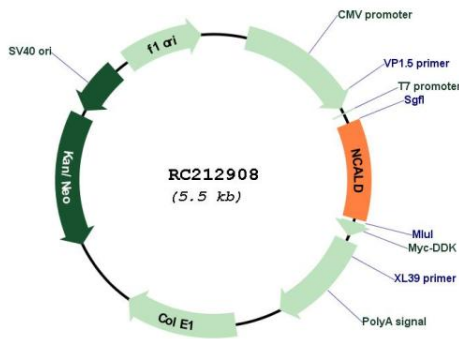
**UniProt ID:** [P61601](#)

**Cytogenetics:** 8q22.3

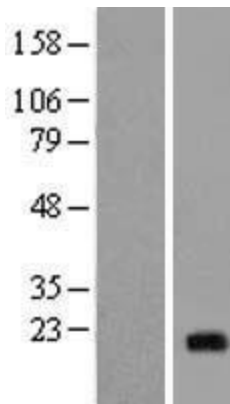
**MW:** 22.3 kDa

**Gene Summary:** This gene encodes a member of the neuronal calcium sensor (NCS) family of calcium-binding proteins. The protein contains an N-terminal myristoylation signal and four EF-hand calcium binding loops. The protein is cytosolic at resting calcium levels; however, elevated intracellular calcium levels induce a conformational change that exposes the myristoyl group, resulting in protein association with membranes and partial co-localization with the perinuclear trans-golgi network. The protein is thought to be a regulator of G protein-coupled receptor signal transduction. Several alternatively spliced variants of this gene have been determined, all of which encode the same protein; additional variants may exist but their biological validity has not been determined. [provided by RefSeq, Jul 2008]

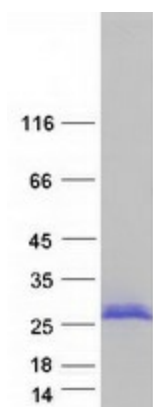
**Product images:**



Circular map for RC212908



Western blot validation of overexpression lysate (Cat# [LY421783]) using anti-DDK antibody (Cat# [TA50011-100]). Left: Cell lysates from untransfected HEK293T cells; Right: Cell lysates from HEK293T cells transfected with [RC212908] using transfection reagent MegaTran 2.0 (Cat# [TT210002]).



Coomassie blue staining of purified NCALD protein (Cat# [TP312908]). The protein was produced from HEK293T cells transfected with NCALD cDNA clone (Cat# RC212908) using MegaTran 2.0 (Cat# [TT210002]).