

## Product datasheet for RC212907

### PP4R4 (PPP4R4) (NM\_020958) Human Tagged ORF Clone

#### Product data:

**Product Type:** Expression Plasmids  
**Product Name:** PP4R4 (PPP4R4) (NM\_020958) Human Tagged ORF Clone  
**Tag:** Myc-DDK  
**Symbol:** PP4R4  
**Synonyms:** CFAP14; KIAA1622; PP4R4  
**Mammalian Cell Selection:** Neomycin  
**Vector:** pCMV6-Entry (PS100001)  
**E. coli Selection:** Kanamycin (25 ug/mL)  
**ORF Nucleotide Sequence:** >RC212907 representing NM\_020958  
Red=Cloning site Blue=ORF Green=Tags(s)

TTTTGTAATACGACTCACTATAGGGCGGCCGGAATTCGTCGACTGGATCCGGTACCGAGGAGATCTGCC  
GCC**CGATCGCC**

ATGCATCCGCCGCCGCCGCCGCGATGGATTTCAAGCAGAACAGCCTGTTTCGGTTACATGGAGGACC  
TGCAGGAGCTCACCATCATCGAGAGGCCGGTCCGCCGAGCCTCAAGACACCGGAAGAAATAGAAAGATT  
GACAGTCGATGAAGACCTCAGTGATATTGAAAGGGCTGTTTATCTGCTCAGTGCTGGTCAAGATGTCCAA  
GGAACAAGTGTGATTGCAATCTCCATTTTTGATGCGACAGAATCCCACTGAGACGCTTCGGAGAGTGT  
TGCCAAAAGTCAGATGTCTTCCAAGTCCATGAGGATGCACACTATTTATCCAGAGAGTATGGATCTCA  
CATATGTTTGTCCAGAGG

**ACGCGT**ACGCGGCCGCTCGAGCAGAAACTCATCTCAGAAGAGGATCTGGCAGCAAATGATATCCTGGATT  
ACAAGGATGACGACGATAAGGTTTAA

**Protein Sequence:** >RC212907 representing NM\_020958  
Red=Cloning site Green=Tags(s)  
MHPPPPAAAMDFSQNSLFGYMEDLQELTIIERPVRRLKTPPEIERLTVDEDLSDIERAVYLLSAGQDVQ  
GTSVIANLPFLMRQNPTETLRRVLPKVRCLPRSMRMHTYL SREYGS HICLSRG

**TR**TRPLEQKLISEEDLAANDILDYKDDDDKV

**Chromatograms:** [https://cdn.origene.com/chromatograms/mk6498\\_h01.zip](https://cdn.origene.com/chromatograms/mk6498_h01.zip)

**Restriction Sites:** SgfI-MluI



[View online »](#)

**Cloning Scheme:**


**ACCN:** NM\_020958

**ORF Size:** 1932 bp

**OTI Disclaimer:** The molecular sequence of this clone aligns with the gene accession number as a point of reference only. However, individual transcript sequences of the same gene can differ through naturally occurring variations (e.g. polymorphisms), each with its own valid existence. This clone is substantially in agreement with the reference, but a complete review of all prevailing variants is recommended prior to use. [More info](#)

**OTI Annotation:** This clone was engineered to express the complete ORF with an expression tag. Expression varies depending on the nature of the gene.

**Components:** The ORF clone is ion-exchange column purified and shipped in a 2D barcoded Matrix tube containing 10ug of transfection-ready, dried plasmid DNA (reconstitute with 100 ul of water).

- Reconstitution Method:**
1. Centrifuge at 5,000xg for 5min.
  2. Carefully open the tube and add 100ul of sterile water to dissolve the DNA.
  3. Close the tube and incubate for 10 minutes at room temperature.
  4. Briefly vortex the tube and then do a quick spin (less than 5000xg) to concentrate the liquid at the bottom.
  5. Store the suspended plasmid at -20°C. The DNA is stable for at least one year from date of shipping when stored at -20°C.

**RefSeq Size:** 923 bp

**RefSeq ORF:** 363 bp

**Locus ID:** 57718

**UniProt ID:** [Q6NUP7](#)

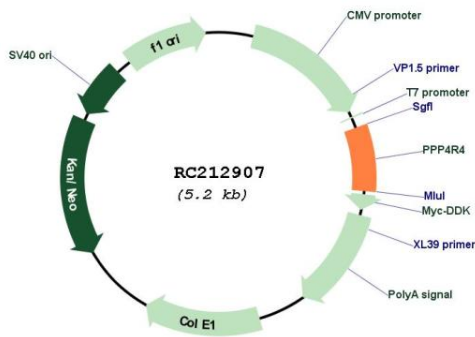
**Cytogenetics:** 14q32.12-q32.13

**Protein Families:** Phosphatase

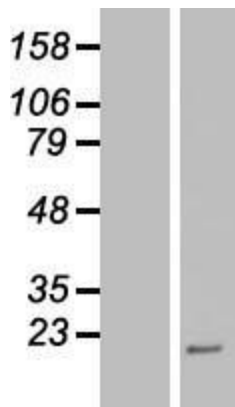
**MW:** 13.7 kDa

**Gene Summary:** The protein encoded by this gene is a HEAT-like repeat-containing protein. The HEAT repeat is a tandemly repeated, 37-47 amino acid long module occurring in a number of cytoplasmic proteins. Arrays of HEAT repeats form a rod-like helical structure and appear to function as protein-protein interaction surfaces. The repeat-containing region of this protein has some similarity to the constant regulatory domain of the protein phosphatase 2A PR65/A subunit. The encoded protein binds protein serine/threonine phosphatase 4c in the cytoplasm. [provided by RefSeq, Jan 2017]

**Product images:**



Circular map for RC212907



Western blot validation of overexpression lysate (Cat# [LY412181]) using anti-DDK antibody (Cat# [TA50011-100]). Left: Cell lysates from untransfected HEK293T cells; Right: Cell lysates from HEK293T cells transfected with RC212907 using transfection reagent MegaTran 2.0 (Cat# [TT210002]).