

Product datasheet for RC212903

C14orf43 (ELMSAN1) (NM_194278) Human Tagged ORF Clone

Product data:

Product Type:	Expression Plasmids
Product Name:	C14orf43 (ELMSAN1) (NM_194278) Human Tagged ORF Clone
Tag:	Myc-DDK
Symbol:	C14orf43
Synonyms:	C14orf43; C14orf117; c14_5541; ELMSAN1; LSR68
Mammalian Cell Selection:	Neomycin
Vector:	pCMV6-Entry (PS100001)
E. coli Selection:	Kanamycin (25 ug/mL)
ORF Nucleotide Sequence:	>RC212903 representing NM_194278 Red=Cloning site Blue=ORF Green=Tags(s)

TTTTGTAATACGACTCACTATAGGGCGGCCGGGAATTCGTCGACTGGATCCGGTACCGAGGAGATCTGCC
GCC**CGATCGCC**

ATGAACCTCCAGGCCAGCCCAAGGCTCAGAACAAGCGGAAGCGTTGCCTCTTCGGGGGCCAGGAACCAG
CTCCCAAGGAGCAGCCCCCTCCCCTGCAGCCCCCAGCAGTCCATCAGAGTGAAGGAGGAGCAGTACCT
CGGGCAGGAGGGTCCAGGAGGGGAGTCTCCACCTCTCAGCCTGTGGAAGTCCCCCTCCTAGCAGCCTG
GCCCTGTGAAGTCTGTGGTATATGGGCTGAGCGGACCTCAGCAGCCATGCTGTCCAGCAGGTGGCT
CAGTAAAGTGGCCAACTCTGTGATGGTCCAGGGCGGGGCCGGAGCGTGGAGGAGGTGGGGGTGTGAG
TGACAGCAGCTGGCAGCAGCAGCCAGGCCAGCCTCCACCCATTCAACATGGAAGTCCACAGTCTGTCC
CTCTACAGTGCAACCAAGGGGAGCCCGCATCTGGAGTGGGAGTCCCGACTTACTATAACCACCCCTGAGG
CACTGAAGCGGGAGAAAGCGGGGGGCCACAGCTGGACCCTATGTGCGACCAATGATGCCACAGAAGGT
GCAGCTGGAGGTAGGGCGGCCCCAGGCACCCCTGAATTTTCCACGCAGCCAAGAAACCCCAACCCAG
TCACTGCCCTGCAACCTTCCAGCTGGCATTGGCCACCAGGTGAACCGGAGGTCTTCCGGCAGGGCC
CACCGCCCCAAACCCGGTGGCTGCCTCCCTCCACAGAAGCAGCAGCAGCAGCAACACAGCAGCA
GCAGCAGCAGCAGCAGGCCAGCCCTACCCAGATGCCGCTCTTTGAGAAGTCTATTCCATGCCGCAGCAA
CCCTCGCAGCAACCCAGGACTTTGGCCTGCAGCCAGCTGGGCCACTGGGACACTCCACCTGGCTCACC
ACAGCATGGCACCTACCCCTTCCCCCAACCCAGATATGAACCCAGAAGTCCGCAAGGCCCTTCTGCA
GGAAGTCCAGCCCCGAGCCAGCGTACCTCAGGTCCAGATCCCTTCCCCCGCCGCTCCCGCCGCTCTCT
AAGGAGGGTATCCTGCCTCCAGCGCCCTGGATGGGGCTGGCACCCAGCCTGGCAGGAGGCCACTGGCA
ACCTGTTCTACATCACTGGCCCTGCAGCAGCCGCCACCTGGCTCCCTGGGGCAGCCCCATCCTGAAGC
TCTGGGATTCCCCTGGAGCTGAGGGAGTGCAGCTACTGCCTGATGGGGAGAGACTAGCACCCAATGGC
CGGGAGCGAGAGGCTCCTGCCATGGGCAGCGAGGAGGGCATGAGGGCAGTGAACACAGGGGACTGTGGC
AGGTGCTACGGGGCGGAGTGATCCAGAGCAGCGACGGAGGCCCGGGCATCCAGGAGGCCAATTTGCT
GACCCTGGCCAGAAGGCTGTGGAGCTGGCCTCACTGCAGAATGCAAGGATGGCAGTGGTTCTGAAGAG



[View online >](#)

AAGCGGAAAAGTGTATTGGCCTCAACTACCAAGTGTGGGGTGGAGTTTTCTGAGCCTCCTTAGCCACCA
 AGCGAGCACGAGAAGACAGTGGGATGGTACCCCTCATCATCCCAGTGTCTGTGCCTGTGCGAACTGTGGA
 CCCAACTGAGGCAGCCAGGCTGGAGGTCTTGATGAGGACGGGAAGGGTCTGAACAGAACCCTGCTGAG
 CACAAGCCATCAGTCATCGTACCCGACGGCGGTCCACCCGAATCCCCGGGACAGATGCTCAAGCTCAGG
 CAGAGGACATGAATGTCAAGTTGGAGGGGGAGCCTTCCGTGCGGAAACAAAGCAGCGGCCAGGCCGA
 GCCCTCATCATCCCCACCAAGGCGGGCACTTTCATCGCCCTCCCGTCTACTCCAACATACCCCATAC
 CAGAGCCACTGCGCTCTCCCGTGCCTAGCTGACCACCCCTCTGAGCGGAGCTTTGAGCTACCTCCCT
 ACACGCCGCCCCCATCCTCAGCCCTGTGCGGGAAGGCTCTGCCCTCTACTTCAATGCCATCATATCAAC
 CAGCACCATCCCTGCCCTCCTCCCATCACGCCTAAGAGTGCCCATCGCACGCTGCTCCGGACTAACAGT
 GCTGAAGTAACCCCGCTGCTCTCTGTGATGGGGGAGGCCACCCAGTGAGCATCGAGCCACGGATCA
 ACGTGGGCTCCCGTTCCAGGCAGAAAATCCCTTGATGAGGGACCGTGCCTGGCAGCTGCAGATCCCCA
 CAAGGCTGACTTGGTGTGGCAGCCATGGGAGGACCTAGAGAGCAGCCGGGAGAAGCAGAGGCAAGTGAA
 GACCTGCTGACAGCCGCTGCTCCAGCATTTTCCCTGGTCTGGCACCAACCAGGAGCTGGCCCTGCACT
 GTCTGCACGAATCCAGAGGAGACATCCTGAAACGCTGAATAAGCTGCTGCTGAAGAAGCCCTGCGGCC
 CCACAACCATCCGCTGGCAACTATCACTACACAGGCTCTGACCAGTGGAAAGATGGCCGAGAGGAAGCTG
 TTCAACAAAGGCATTGCCATCTACAAGAAGGATTTCTTCTGGTGCGAAGCTGATCCAGACCAAGACCG
 TGGCCAGTGCCTGGAGTTCTACTACACCTACAAGAAGCAGGTGAAAATCGGCCGCAATGGGACTCTAAC
 CTTTGGGGATGTGGATACGAGCGATGAGAAGTCGGCCAGGAAGAGGTTGAAGTGGATATTAAGACTTCC
 CAAAAGTCCCAAGGGTGCCTTCCCAGAAGAGAGTCCCAAGTGAAGAGAGGCTGGAGCCCAAGAGGG
 AGGTGAAGGAGCCAGGAAGGAGGGGGAGGAGGAGGTGCCAGAGATCCAAGAGAAGGAGGAGCAGGAAGA
 GGGCGGAGAGCGCAGCAGGCGGGCAGCGCAGTCAAAGCCACGCAGACACTACAGCCAAATGAGTCGGCC
 AGTGACATCCTCATCCTCCGAGCCACGAGTCAAACGCCCTGGTCTGCCGGTGGCCAGGCCTCGGAGA
 AGCCAAGGGAAGGACAGGGAAGTCACGAAGGGCACTACCTTTTTCAGAGAAGAAGAAAAACAGAGAC
 ATTCAGTAAGACCCAGAATCAGGAGAACACTTCCCCTGTAAAAAATGTGGCAGG

ACGCGTACGCGGCCGCTCGAGCAGAACTCATCTCAGAAGAGGATCTGGCAGCAATGATATCCTGGATT
 ACAAGGATGACGACGATAAGGTTTAA

Protein Sequence: >RC212903 representing NM_194278
 Red=Cloning site Green=Tags(s)

MNLQAQPKAQNKRRKCLFGGQEPAPKEQPPLQPPQQSIRVKEEQYLGHGPGGAVSTSQPVLPSPSSL
 ALLNSVYGPERSAAMLSQQVASVKWPNVSVMAPGRGPERGGGGVSDSSWQQQPQPSTWNCNCHSL
 LYSATKGSPPHGVVPTYYNHPEALKREKAGGPQLDRYVVRPMPQKVQLEVGRPQAPLNSFHAACKPPNQ
 SLPLQPFQLAFGHQVNRQVFRQPPPPNPVAAFPPKQQQQQQPQQQQQQAALPQMPLFENFYSPMPQQ
 PSQQPQDFGLQPAGPLGQSHLAHHSMAPIYFPNPDMPNPELRKALLQDSAPQALPQVQIPFRRSRRLS
 KEGILPPSALDGAGTQPGQEATGNLFLHHWPLQQPPPGSLGQPHPEALGFLELRESQLLPDGERLAPNG
 REREAPAMGSEEGMRAVSTGDCGQVLRGGVIQSTRRRRRASQEANLLTLAQKAVELASLQNAKDGSGSEE
 KRKSVLASTTKCGVEFSEPSLATKRAREDSGMVPLIIPVSVVVRTVDPTAAQAGGLDEDGKGPEQNP
 HKPSVIVTRRRSTRIPGTAQAQEDMNVKLEGEPSVRKPKQRPRPEPLIIPTKAGTFIAPPVYSNITPY
 QSHLRSPVRLADHPSERSFELPPYTPPPILSPVREGSGLYFNAAIISTSTIPAPPPITPKSAHRTLLRTNS
 AEVTPPVLSVMGEATPVSIIEPRINVGSRFQAEIPLMRDRALAAADPHKADLVWQPWEDLESSREKQQRVE
 DLLTAACSSIFPGAGTNQELALHCLHESRGLILETLNKLKPLRPHNHPLATYHYTGSDQWMAERKL
 FNKGIAIYKDFLQKLIQTKVAQCVEFYTYKQVKIGRNGTLTFGDVDTSDEKSAQEEVEVDIKTS
 QKFPRVPLPRRESPSEERLEPKREVKEPRKEGEEVEPEIQEKEEQEGRERSRRAAVKATQTLQANESA
 SDILILRSHE SNAPGSAGQASEKPREGTGKSRRALPFSEKKTETFTSKTQNTFPCKKCGR

TRTRPLEQKLI SEEDLAANDILDYKDDDDKV

Chromatograms: https://cdn.origene.com/chromatograms/mk6167_h03.zip

Restriction Sites: SgfI-MluI

Cloning Scheme:


ACCN: NM_194278

ORF Size: 3135 bp

OTI Disclaimer: The molecular sequence of this clone aligns with the gene accession number as a point of reference only. However, individual transcript sequences of the same gene can differ through naturally occurring variations (e.g. polymorphisms), each with its own valid existence. This clone is substantially in agreement with the reference, but a complete review of all prevailing variants is recommended prior to use. [More info](#)

OTI Annotation: This clone was engineered to express the complete ORF with an expression tag. Expression varies depending on the nature of the gene.

Components: The ORF clone is ion-exchange column purified and shipped in a 2D barcoded Matrix tube containing 10ug of transfection-ready, dried plasmid DNA (reconstitute with 100 ul of water).

- Reconstitution Method:**
1. Centrifuge at 5,000xg for 5min.
 2. Carefully open the tube and add 100ul of sterile water to dissolve the DNA.
 3. Close the tube and incubate for 10 minutes at room temperature.
 4. Briefly vortex the tube and then do a quick spin (less than 5000xg) to concentrate the liquid at the bottom.
 5. Store the suspended plasmid at -20°C. The DNA is stable for at least one year from date of shipping when stored at -20°C.

RefSeq: [NM_194278.3](#)

RefSeq Size: 8105 bp

RefSeq ORF: 3138 bp

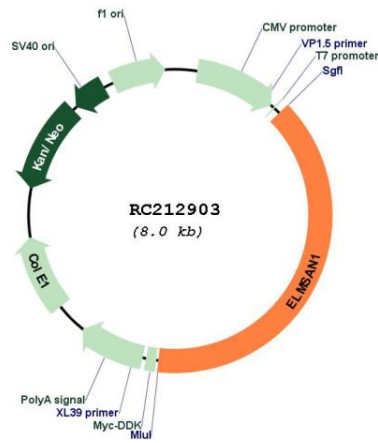
Locus ID: 91748

UniProt ID: [Q6PJG2](#)

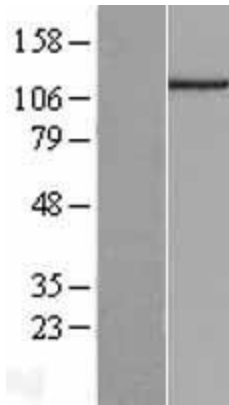
Cytogenetics: 14q24.3

MW: 114.8 kDa

Product images:



Circular map for RC212903



Western blot validation of overexpression lysate (Cat# [LY420815]) using anti-DDK antibody (Cat# [TA50011-100]). Left: Cell lysates from untransfected HEK293T cells; Right: Cell lysates from HEK293T cells transfected with [RC217065] using transfection reagent MegaTran 2.0 (Cat# [TT210002]).