

Product datasheet for **RC212896**

PCPTP1 (PTPRR) (NM_002849) Human Tagged ORF Clone

Product data:

Product Type:	Expression Plasmids
Product Name:	PCPTP1 (PTPRR) (NM_002849) Human Tagged ORF Clone
Tag:	Myc-DDK
Symbol:	PCPTP1
Synonyms:	EC-PTP; PCPTP1; PTP-SL; PTPBR7; PTPRQ
Mammalian Cell Selection:	Neomycin
Vector:	pCMV6-Entry (PS100001)
E. coli Selection:	Kanamycin (25 ug/mL)



[View online »](#)

ORF Nucleotide
Sequence:

>RC212896 representing NM_002849
Red=Cloning site Blue=ORF Green=Tags(s)

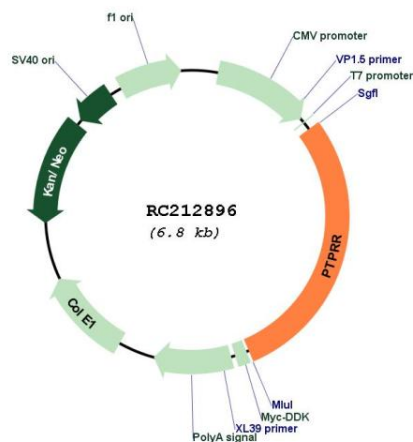
TTTTGTAATACGACTCACTATAGGGCGGCCGGAATTCGTCGACTGGATCCGGTACCGAGGAGATCTGCC
GCCGCGATCGCC

ATGCGGAGAGCAGTCTGCTTCCCTGCGCTGTGCCTGCTCCTTAATCTTCACGCTGCAGGGTGCTTTTCAG
GAAACAATGATCATTTTTTGGCAATTAATCAGAAGAAGAGTGGGAAGCCGGTATTCATTTATAAGCATT
ACAAGACATTGAGAAGAGCCTGGATATAGCCCCACAAAAATCTACAGACATAGCTACCATTCTCTTCC
GAAGCTCAAGTAAGCAAACGCCACCAGATTGTCAATTCAGCATTTCCTAGACCCGCATATGACCCGTCTC
TCAATCTGCTGGCCATGGATGGTCAAGATCTTGAAGTGGAAAACTCCCAATCCCAGCAGCAAATGTAAT
TGTGGTGACACTGCAAATGGATGTAACAAGCTGAACATAACCTTGCTTCGGATCTTCGCCAAGGAGTG
GCTGCAGCTTTAGGACTTTACCCAGCAAGTGCACATCAATCGCCTCATTGGAAAGAAGAACAGTATTG
AACTGTTTGTGTCTCCATAAACCGAAAAACAGGAATTTCTGATGCTCTGCCCTCTGAGGAAGTTCTTCG
TCACTTAATATCAATGTTTTGCATCAAAGTTTATCCAGTTTGGAAATACAGAAGTCTCTCCTGAGAAA
AATGTTTTACAAGGGCAGCATGAAGCGGACAAAATCTGGAGCAAAGAAGGATTTTATGCTGTTGCAATT
TTCTCAGCATCTTTGTTATTATAGTAACGTGTTTGATGATTCTTTACAGATTAAGAAAGATTTAGCT
TTCTTAAGACAAGACAAGAGAAAAACCAGGAGATCCACCTATCGCCATCACATTACAGCCAGCACTG
TCCGAGGCAAAGACAGTCCACAGCATGGTCCAACCTGAGCAGGCCCAAAGGACTGAATGTTGTCGTGG
ACCCTCAAGGCCGAGGTGCTCCTGAGATCAGAGCTACCACCGCTACCTCTGTTTGCCTTCTCCTTTCAA
AATGAAGCCCATAGGACTTCAAGAGAGAAGAGGGTCCAACGTATCTTTACATTGGACATGAGTAGCTTG
GGGAACATTGAACCTTTGTGTCTATACCAACACCACGGGAGAAGGTAGCAATGGAGTATCTGCAGTCAG
CCAGCCGAATTCACAAGGTCTCAGCTGAGGGACGTCGTGGCAAGTTCACATTTACTCCAAAGTGAAT
CATGGAAATACCAATGAACCTTTGTGGATCCCAAAGAAATGATATTCCGGCTCATGGAACATAAAAAATCGC
TATAAGACCATTTTACCAATCCCTCAGCAGAGTGTGTTAAGACCAAAAAATGTAACCGATTCATTGA
GCACCTACATTAATGCTAATTATATTAGGGCTACAGTGGCAAGGAGAAAGCCTTCATTGCCACGCAGGG
CCCCATGATCAACACCGTGGATGATTTCTGGCAGATGGTTTGGCAGGAAGACAGCCCTGTGATTGTTATG
ATCACAAAACCTCAAAGAAAAAATGAGAAATGTGTGCTATACTGGCCGAAAAGAGAGGGATATATGGAA
AAGTTGAGTTCTGGTTATCAGTGTAAATGAATGTGATAACTACACCATTGAAACCTTGCTTAAAGCA
AGGAAGCCACACCAACATGTGAAGCATTACTGGTACACCTCATGGCCTGATCACAAGACTCCAGACAGT
GCCAGCCCTCCTACAGCTCATGCTGGATGTAGAAGAAGACAGACTTGCTTCCAGGGCCGAGGGCCTG
TGGTTGTCCACTGCAGTGCAGGAATAGGTAGAACAGGGTGTATTTATTGCTACATCCATTGGCTGTCAACA
GCTGAAAGAAGAAGGAGTTGTGGATGACTAAGCATTGTCTGCCAGCTTCGTATGGATAGAGGTGGAATG
GTGCAACCAAGTGCAGTATGAATTTGTGCACCATGCTCTGTGCCTGTATGAGAGCAGACTTTCAGCAG
AGACTGTCCAG

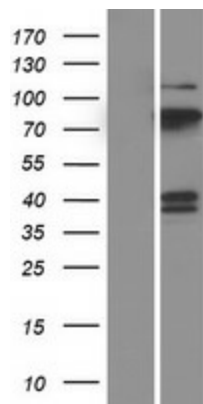
ACGCGTACGCGGCCGCTCGAGCAGAACTCATCTCAGAAGAGGATCTGGCAGCAAATGATATCCTGGATT
ACAAGGATGACGACGATAAGGTTTAA

Reconstitution Method:	<ol style="list-style-type: none">1. Centrifuge at 5,000xg for 5min.2. Carefully open the tube and add 100ul of sterile water to dissolve the DNA.3. Close the tube and incubate for 10 minutes at room temperature.4. Briefly vortex the tube and then do a quick spin (less than 5000xg) to concentrate the liquid at the bottom.5. Store the suspended plasmid at -20°C. The DNA is stable for at least one year from date of shipping when stored at -20°C.
RefSeq:	NM_002849.2 , NP_002840.1
RefSeq Size:	3492 bp
RefSeq ORF:	1974 bp
Locus ID:	5801
UniProt ID:	Q15256
Cytogenetics:	12q15
Domains:	Y_phosphatase, PTPc_motif
Protein Families:	Druggable Genome, Phosphatase, Transmembrane
Protein Pathways:	MAPK signaling pathway
MW:	73.86 kDa
Gene Summary:	<p>The protein encoded by this gene is a member of the protein tyrosine phosphatase (PTP) family. PTPs are known to be signaling molecules that regulate a variety of cellular processes including cell growth, differentiation, mitotic cycle, and oncogenic transformation. This PTP possesses an extracellular region, a single transmembrane region, and a single intracellular catalytic domain, and thus represents a receptor-type PTP. Silencing of this gene has been associated with colorectal cancer. Multiple transcript variants encoding different isoforms have been found for this gene. This gene shares a symbol (PTPRQ) with another gene, protein tyrosine phosphatase, receptor type, Q (GeneID 374462), which is also located on chromosome 12. [provided by RefSeq, May 2011]</p>

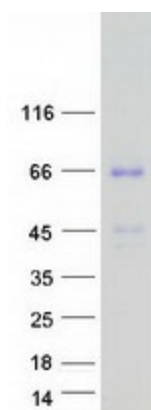
Product images:



Circular map for RC212896



Western blot validation of overexpression lysate (Cat# [LY419077]) using anti-DDK antibody (Cat# [TA50011-100]). Left: Cell lysates from untransfected HEK293T cells; Right: Cell lysates from HEK293T cells transfected with RC212896 using transfection reagent MegaTran 2.0 (Cat# [TT210002]).



Coomassie blue staining of purified PTPRR protein (Cat# [TP312896]). The protein was produced from HEK293T cells transfected with PTPRR cDNA clone (Cat# RC212896) using MegaTran 2.0 (Cat# [TT210002]).