

Product datasheet for **RC212892**

CPNE1 (NM_152925) Human Tagged ORF Clone

Product data:

Product Type:	Expression Plasmids
Product Name:	CPNE1 (NM_152925) Human Tagged ORF Clone
Tag:	Myc-DDK
Symbol:	CPNE1
Synonyms:	COPN1; CPN1
Mammalian Cell Selection:	Neomycin
Vector:	pCMV6-Entry (PS100001)
E. coli Selection:	Kanamycin (25 ug/mL)



[View online »](#)

ORF Nucleotide Sequence:

>RC212892 representing NM_152925
 Red=Cloning site Blue=ORF Green=Tags(s)

TTTTGTAATACGACTCACTATAGGGCGGCCGGAATTCGTCGACTGGATCCGGTACCGAGGAGATCTGCC
 GCC**CGGATCGCC**

ATGGCCCACTGCGTGACCTTGGTTCCAGCTGTCCATTTCTGTGACCATCTCATTGACAAGGACATCGGCT
 CCAAGTCTGACCCACTCTGCGTCTTTTACAGGATGTGGGAGGGGCAGCTGGGCTGAGCTTGCCGGAC
 TGAACGGGTGCGAACTGCTCAAGCCCTGAGTTCTCAAGACTCTACAGCTTGAGTACCGCTTTGAGACA
 GTCCAGAAGCTACGCTTTGGAATCTATGACATAGACAACAAGACGCCAGAGCTGAGGGATGATGACTTCC
 TAGGGGGTGTGAGTGTCCCTAGGACAGATTGTGTCCAGCCAGGTAAGTACTCTCCCTTGATGCTGAA
 GCCTGGAAAACCTGTGGGCGGGGACCATCACGGTCTCAGCTCAGGAATTAAGGACAATCGTGTAGTA
 ACCATGGAGGTAGAGGCCAGAACTAGATAAGAAGGACTTCTGGGAAAATCAGATCCATTTCTGGAGT
 TCTTCCGCCAGGGTATGGGAAATGGCACCTGGTGTACAGATCTGAGGTCAAGAACAACCTGAACCC
 TACATGGAAGCGTTTCTCAGTCCCGTTTACGATTTCTGTGGTGGAAACCCAGCACACCCATCCAGGTG
 CAATGCTCCGATTATGACAGTGACGGGTACATGATCTCATCGGTACCTCCACACCAGCTTGCCCCAGC
 TGCAGGACGTCGCCGCTGAGTTGAATGCATCCACCTGAGAAGCAGCAGAAAAAGAAAGCTACAAGAA
 CTCTGGAATAATCCGTGTCAAGATTTGTCGGGTAGAAACAGAGTACTCCTTTCTGGACTATGTGATGGGA
 GGCTGTGAGTCAACTTCACTGTGGCGTGGACTTCACTGGTCCAATGGAGACCCTCCTCACCTGACT
 CCCTACACTACCTGAGTCCAACAGGGGTCAATGAGTACCTGATGGCACTGTGGAGTGTGGGCAGCGTGGT
 TCAGGACTATGACTCAGACAAGCTGTCCCTGCATTTGGATTTGGGGCCAGGTTCCCTCTGACTGGCAG
 GTCTCGCATGAATTTGCCTTGAATTTCAACCCAGTAACCCCTACTGTGCAGGCATCCAGGGCATTGTGG
 ATGCCTACGCCAAGCCCTGCCCAAGTTCGCCTCTATGGCCCTACCAACTTTGCACCCATCATCAACCA
 TGTGGCCAGGTTTGCAGCCAGGCTGCACATCAGGGGACTGCCTCGCAATACTTCATGCTGTTGCTGCTG
 ACTGATGGTGTGTGACGGATGTGGAAGCCACACGTGAGGCTGTGGTGCCTCGAACCTGCCATGT
 CAGTGATCATTGTGGGTGTGGTGGTGTGACTTTGAGGCCATGGAGCAGCTGGACGCTGATGGTGGACC
 CCTGCATACAGTTCTGGGCAGGCTGTGCCCGGACATTGTGCAGTTTGTACCTACCGCCGGTCCAG
 AATGCCCTCGGGAGGCATTGGCACAGACCGTGTGCGAGAAGTGCCACACAACCTGGTCTCATACTTCA
 GGGCCAGGGTTGGGCCCGCTCAAGCCACTTCCACCCTCAGCCAAGGATCTGCACAGGCCCCCGAGCC
 C

ACGCGTACGCGGCCGCTCGAGCAGAACTCATCTCAGAAGAGGATCTGGCAGCAAATGATATCCTGGATT
 ACAAGGATGACGACGATAAGGTTTAA

Protein Sequence:

>RC212892 representing NM_152925
 Red=Cloning site Green=Tags(s)

MAHCVTLVQLSISCDHLIDKDIGSKSDPLCVLLQDVGGGWAELGRTERVRNCSSPEFSKTLQLEYRFET
 VQKLRFGIYDIDNKTPELRDDDFLGAECSLGQIVSSQVLTPLMLKPGKPAGRGITVSAQELKDNRVV
 TMEVEARNLDDKDFLGGSDPFLFFRQGDGKWHLYRSEVIKNNLNPTWKRFSVPVQHFCCGPNPSTPIQV
 QCSYDSDGSHDLIGTFHTSLAQLQAVPAEFECIHPEKQKQKKSYPKNSGTIRVKICRVETEYSFLDYVMG
 GCQINFVGVDFGSDGDPSSPDSLHYLSPTGVNEYLMALWSVGSVVQDYSDKLFPAFGFGAQPDPDWQ
 VSEFALNPNPNPYCAGIQGIVDAYRQALPQVRLYGPTNFAPIINHVARFAAQAAHQGTASQYFMLLLL
 TDGAVTDVEATREAVVRASNLPMSVIVGVGGADFEAMEQLDADGGPLHTRSGQAAARDIVQFVPPYRRFQ
 NAPREALAQTVLAQVPTQLVSYFRAQGWAPLKLPLPPSAKDPAQAPQA

TRTRPLEQKLISEEDLAANDILDYKDDDDKV

Restriction Sites:

Sgfl-MluI

Cloning Scheme:



ACCN: NM_152925

ORF Size: 1611 bp

OTI Disclaimer: Due to the inherent nature of this plasmid, standard methods to replicate additional amounts of DNA in E. coli are highly likely to result in mutations and/or rearrangements. Therefore, OriGene does not guarantee the capability to replicate this plasmid DNA. Additional amounts of DNA can be purchased from OriGene with batch-specific, full-sequence verification at a reduced cost. Please contact our customer care team at custsupport@origene.com or by calling 301.340.3188 option 3 for pricing and delivery.

The molecular sequence of this clone aligns with the gene accession number as a point of reference only. However, individual transcript sequences of the same gene can differ through naturally occurring variations (e.g. polymorphisms), each with its own valid existence. This clone is substantially in agreement with the reference, but a complete review of all prevailing variants is recommended prior to use. [More info](#)

OTI Annotation: This clone was engineered to express the complete ORF with an expression tag. Expression varies depending on the nature of the gene.

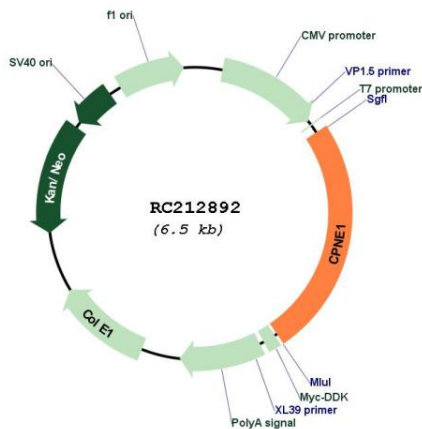
Components: The ORF clone is ion-exchange column purified and shipped in a 2D barcoded Matrix tube containing 10ug of transfection-ready, dried plasmid DNA (reconstitute with 100 ul of water).

- Reconstitution Method:
1. Centrifuge at 5,000xg for 5min.
 2. Carefully open the tube and add 100ul of sterile water to dissolve the DNA.
 3. Close the tube and incubate for 10 minutes at room temperature.
 4. Briefly vortex the tube and then do a quick spin (less than 5000xg) to concentrate the liquid at the bottom.
 5. Store the suspended plasmid at -20°C. The DNA is stable for at least one year from date of shipping when stored at -20°C.

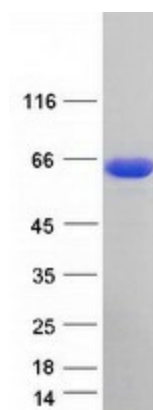
RefSeq: [NM_152925.3](#)
RefSeq Size: 2022 bp
RefSeq ORF: 1614 bp
Locus ID: 8904
UniProt ID: [Q99829](#)
Cytogenetics: 20q11.22
Domains: C2, VWA
MW: 59.1 kDa

Gene Summary: Calcium-dependent membrane-binding proteins may regulate molecular events at the interface of the cell membrane and cytoplasm. This gene encodes a calcium-dependent protein that also contains two N-terminal type II C2 domains and an integrin A domain-like sequence in the C-terminus. However, the encoded protein does not contain a predicted signal sequence or transmembrane domains. This protein has a broad tissue distribution and it may function in membrane trafficking. This gene and the gene for RNA binding motif protein 12 overlap at map location 20q11.21. Alternate splicing results in multiple transcript variants encoding different proteins. [provided by RefSeq, Aug 2008]

Product images:



Circular map for RC212892



Coomassie blue staining of purified CPNE1 protein (Cat# [TP312892]). The protein was produced from HEK293T cells transfected with CPNE1 cDNA clone (Cat# RC212892) using MegaTran 2.0 (Cat# [TT210002]).