

Product datasheet for RC212890

THAP3 (NM_138350) Human Tagged ORF Clone

Product data:

Product Type: Expression Plasmids
 Product Name: THAP3 (NM_138350) Human Tagged ORF Clone
 Tag: Myc-DDK
 Symbol: THAP3
 Mammalian Cell Selection: Neomycin
 Vector: pCMV6-Entry (PS100001)
 E. coli Selection: Kanamycin (25 ug/mL)
 ORF Nucleotide Sequence: >RC212890 representing NM_138350
 Red=Cloning site Blue=ORF Green=Tags(s)

TTTTGTAATACGACTCACTATAGGGCGGCCGGAATTCGTCGACTGGATCCGGTACCGAGGAGATCTGCC
 GCC**CGATCGCC**

ATGCCGAAGTCGTGCGCGGCCCGGCAGTGCTGCAACCGCTACAGCAGCCGAGGAAGCAGCTCACCTTCC
 ACCGGTTTCCGTTTCAGCCGCCCGGAGCTGCTGAAGGAATGGGTGCTGAACATCGGCCGGGCACTTCAA
 GCCCAAGCAGCACACGGTCATCTGCTCCGAGCACTTCCGGCCAGAGTGCTTCAGCGCCTTTGAAACCGC
 AAGAACCTAAAGCACAATGCCGTGCCACGGTGTTCGCCCTTTCAGGACCCACACAGCAGGTGAGGGAGA
 ACACAGCCCTGCCAGTGAGAGAGGAAATGCCAGCTCTTCTCAGAAAGAAAAGACTTCACCTGCCGTTT
 CCAGGTCCTCCCTGAGGCGGGGCCGGAGAGGACAGTCCCTGGGAGAAACATGGACACTGCACTTGAAGAG
 CTTCAGTTGCCCCCAAATGCCGAAGGCCACGTAACAGCAATGTTGTTAATGTAGAAAATGGAACCC
 CAGCTTACGTGAAGCCTTGTGGTTGAGTGAGGAG

ACGCGTACGCGGCCGCTCGAGCAGAACTCATCTCAGAAGAGGATCTGGCAGCAAATGATATCCTGGATT
 ACAAGGATGACGACGATAAGGTTTAA

Protein Sequence: >RC212890 representing NM_138350
 Red=Cloning site Green=Tags(s)

MPKSCAARQCCNRYSSRRKQLTFHRFPFSRPELLKEWVLNIGRGNFKPKQHTVICSEHFRPECFSAFGNR
 KNLKHNAVPTVFAFDPTQQVRENTDPASERGNASSSQKEKTSPCRSQLPEAGAGEDSPGRNMDTAL EE
 LQLPPNAEGHVQAMLFNVENGTASREALWVSEE

TRTRPLEQKLI SEEDLAANDILDYKDDDDKV

Chromatograms: https://cdn.origene.com/chromatograms/mk8023_b09.zip

Restriction Sites: Sgfl-MluI

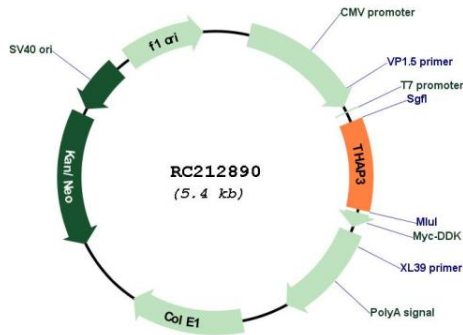


[View online >](#)

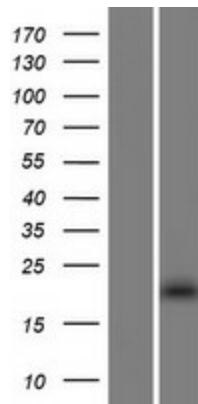
MW: 19.5 kDa

Gene Summary: Component of a THAP1/THAP3-HCFC1-OGT complex that is required for the regulation of the transcriptional activity of RRM1.[UniProtKB/Swiss-Prot Function]

Product images:



Circular map for RC212890



Western blot validation of overexpression lysate (Cat# [LY408624]) using anti-DDK antibody (Cat# [TA50011-100]). Left: Cell lysates from untransfected HEK293T cells; Right: Cell lysates from HEK293T cells transfected with RC212890 using transfection reagent MegaTran 2.0 (Cat# [TT210002]).