

## Product datasheet for RC212883

### SCYL1BP1 (GORAB) (NM\_152281) Human Tagged ORF Clone

#### Product data:

Product Type:	Expression Plasmids
Product Name:	SCYL1BP1 (GORAB) (NM_152281) Human Tagged ORF Clone
Tag:	Myc-DDK
Symbol:	SCYL1BP1
Synonyms:	GO; NTKLBP1; SCYL1BP1
Mammalian Cell Selection:	Neomycin
Vector:	pCMV6-Entry (PS100001)
E. coli Selection:	Kanamycin (25 ug/mL)
ORF Nucleotide Sequence:	>RC212883 representing NM_152281 Red=Cloning site Blue=ORF Green=Tags(s)

TTTTGTAATACGACTCACTATAGGGCGGCCGGAATTCGTCGACTGGATCCGGTACCGAGGAGATCTGCC  
 GCCCGCATCGCC

ATGAGCTGGGCAGCAGTGTGGCAGTCGCGGCTGCGAGATTTGGGCACTTTGGGGTGCCGGTGGCCCG  
 GGCCGATGGCGCAAGGTTGGGCAGGCTTCTCTGAGGAGGAAGTGAAGGAGCTAAAGCAGACTAAAGATCC  
 ATTTGAACCACAGCGACGTCTCCCGCGAAGAAAAGTCGACAACAATTCAGCGAGAAAAAGCCCTTGTA  
 GAGCAAAGCCAAAACTTGGGCTTCAAGATGGATCAACCTCATTACTTCCAGAGCAGCTGCTTTCAGCAC  
 CAAAACAGAGAGTTAACGTTCAAAAACCACCTTTTCTTCCCCTACTCTTCCGAGTCATTTCACTCTCAC  
 CTCCCCCGTTGGTGATGGACAACCACAGGCATTGAAAGTCAGCCAAAGGAAGTGGGACTTGAGAATTCC  
 CATGATGGTCACAACAATGTTGAGATTCTACCTCCAAAGCCAGATTGCAAATTGGAGAAAAAGAAAGTGG  
 AATTGCAAGAAAAATCTCGTTGGGAAGTCTCCAAACAAGAACAACGGCTAATGGAAGAGAAAAATAAACG  
 TAAAAAGCTCTTTGGCTAAAGCTATTGCAGAAAGATCCAAAGAACTCAGGCAGAGACCATGAAACTA  
 AAGCGGATCCAGAAGGAGTTGCAGGCTTTAGATGACATGGTGTGAGCTGACATTGGAATTCTCAGGAACC  
 GGATTGATCAGGCCAGCTTAGACTATTCATACGCTCGGAAGCGGTTTGACAGGGCTGAAGCAGAGTACAT  
 TGCAGCAAAGCTAGATATACAGCGCAAGACTGAGATAAAAGAGCAACTCACTGAACACCTTTGTACGATC  
 ATACAGCAAAATGAGCTCCGAAAGGCCAAGAAGTTGGAGGAGTTGATGCAACAAGTATGTAAGAGCCG  
 ATGAAGAGACTTTGGAGCTTGAGGTGGAGTTCGAGAGATTGCTACACGAACAAGAAGTAGAATCAAGGAG  
 ACCAGTGGTTCGTTAGAGAGGCCATTTAGCCTGCGGAGGAGAGTGTGACATTAGAATTTGCTAAAGAG  
 AACAGAAAGTGTCAAGAACAAGCTGTTTCCCAAGGTAGATGACCAGTGTGAAATTCAGTAGCATCC  
 CCTTCTTAGTCCAACTGCCCAATCAAGAAGGTAATGACATTCAGCTGCTTTGGCCACA

ACGCGTACGCGGCCGCTCGAGCAGAACTCATCTCAGAAGAGGATCTGGCAGCAATGATATCCTGGATT  
 ACAAGGATGACGACGATAAGGTTTAA


[View online »](#)

**Protein Sequence:** >RC212883 representing NM\_152281  
 Red=Cloning site Green=Tags(s)

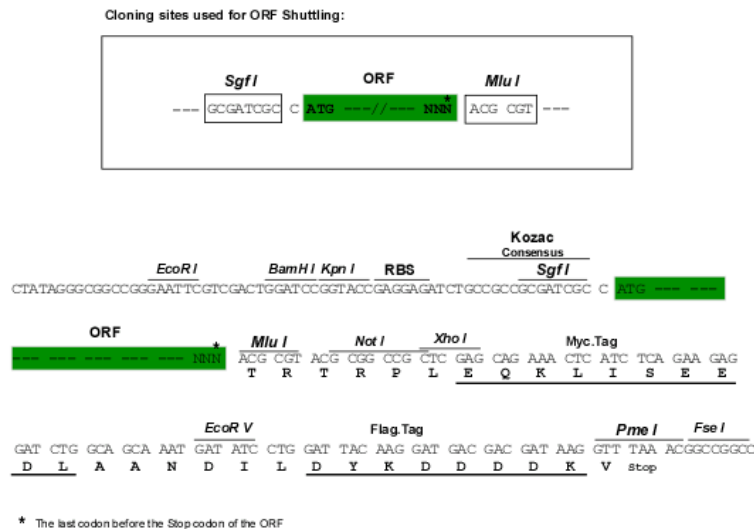
MSWAAVLAVAAARFGHFWGCRWPGPMAQGWAGFSEEELRLKQTKDPFEPQRRLLPAKKSQQQLQREKALV  
 EQSQKLGLQDGSTSLLEQQLSAPKQVRNVQKPPFSSPTLPSHFTLTSPVGDGQPQGIQSQPKELGLENS  
 HDGHNNEILPPKPDCKLEKKKVELQEKSWEVLQQEQLMEEKNKRKALLAKAIAERSKRTQAETMKL  
 KRIQKELQALDDMVSADIGILNRNIDQASLDYSYARKRFDRAEAEYIAAKLDIQRKTEIKEQLTEHLCTI  
 IQQNELRKAKKLEELMQQLDVEADEETLELEVEVERLLHEQEVESSRRPVVRLERPFQPAEESVTLEFAKE  
 NRKCQEAVSPKVDDQCGNSSSIPFLSPNCPNQGNDISAALAT

TRTRPLEQKLISEEDLAANDILDYKDDDDKV

**Chromatograms:** [https://cdn.origene.com/chromatograms/mk6506\\_c02.zip](https://cdn.origene.com/chromatograms/mk6506_c02.zip)

**Restriction Sites:** SgfI-MluI

**Cloning Scheme:**



**ACCN:** NM\_152281

**ORF Size:** 1182 bp

**OTI Disclaimer:** The molecular sequence of this clone aligns with the gene accession number as a point of reference only. However, individual transcript sequences of the same gene can differ through naturally occurring variations (e.g. polymorphisms), each with its own valid existence. This clone is substantially in agreement with the reference, but a complete review of all prevailing variants is recommended prior to use. [More info](#)

**OTI Annotation:** This clone was engineered to express the complete ORF with an expression tag. Expression varies depending on the nature of the gene.

**Components:** The ORF clone is ion-exchange column purified and shipped in a 2D barcoded Matrix tube containing 10ug of transfection-ready, dried plasmid DNA (reconstitute with 100 ul of water).

**Reconstitution Method:**

1. Centrifuge at 5,000xg for 5min.
2. Carefully open the tube and add 100ul of sterile water to dissolve the DNA.
3. Close the tube and incubate for 10 minutes at room temperature.
4. Briefly vortex the tube and then do a quick spin (less than 5000xg) to concentrate the liquid at the bottom.
5. Store the suspended plasmid at -20°C. The DNA is stable for at least one year from date of shipping when stored at -20°C.

**Note:** Plasmids are not sterile. For experiments where strict sterility is required, filtration with 0.22um filter is required.

**RefSeq:** [NM\\_152281.2](#)

**RefSeq Size:** 2186 bp

**RefSeq ORF:** 1110 bp

**Locus ID:** 92344

**UniProt ID:** [Q5T7V8](#)

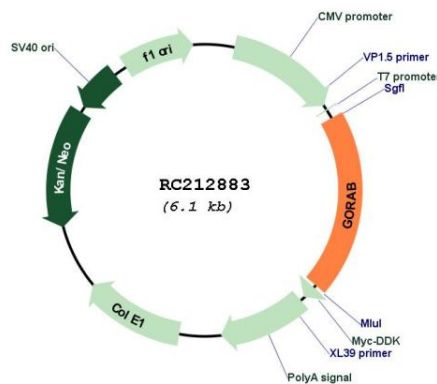
**Cytogenetics:** 1q24.2

**Domains:** DUF662

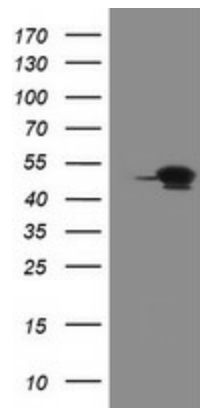
**MW:** 44.8 kDa

**Gene Summary:** This gene encodes a member of the golgin family, a group of coiled-coil proteins localized to the Golgi. The encoded protein may function in the secretory pathway. The encoded protein, which also localizes to the cytoplasm, was identified by interactions with the N-terminal kinase-like protein, and thus it may function in mitosis. Mutations in this gene have been associated with geroderma osteodysplastica. Alternatively spliced transcript variants have been described. [provided by RefSeq, Mar 2009]

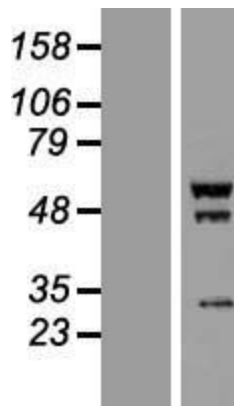
## Product images:



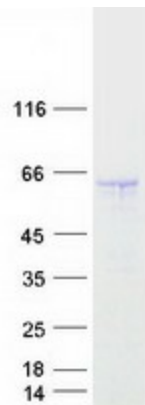
Circular map for RC212883



HEK293T cells were transfected with the pCMV6-ENTRY control (Cat# [PS100001], Left lane) or pCMV6-ENTRY GORAB (Cat# RC212883, Right lane) cDNA for 48 hrs and lysed. Equivalent amounts of cell lysates (5 ug per lane) were separated by SDS-PAGE and immunoblotted with anti-GORAB (Cat# [TA505075]). Positive lysates [LY407701] (100ug) and [LC407701] (20ug) can be purchased separately from OriGene.



Western blot validation of overexpression lysate (Cat# [LY407701]) using anti-DDK antibody (Cat# [TA50011-100]). Left: Cell lysates from untransfected HEK293T cells; Right: Cell lysates from HEK293T cells transfected with RC212883 using transfection reagent MegaTran 2.0 (Cat# [TT210002]).



Coomassie blue staining of purified GORAB protein (Cat# [TP312883]). The protein was produced from HEK293T cells transfected with GORAB cDNA clone (Cat# RC212883) using MegaTran 2.0 (Cat# [TT210002]).