

Product datasheet for **RC212880**

SP8 (NM_182700) Human Tagged ORF Clone

Product data:

Product Type:	Expression Plasmids
Product Name:	SP8 (NM_182700) Human Tagged ORF Clone
Tag:	Myc-DDK
Symbol:	SP8
Synonyms:	BTD
Mammalian Cell Selection:	Neomycin
Vector:	pCMV6-Entry (PS100001)
E. coli Selection:	Kanamycin (25 ug/mL)



[View online »](#)

ORF Nucleotide Sequence:

>RC212880 representing NM_182700
 Red=Cloning site Blue=ORF Green=Tags(s)

TTTTGTAATACGACTCACTATAGGGCGGCCGGGAATTCGTCGACTGGATCCGGTACCGAGGAGATCTGCC
 GCC**CGATCGCC**

ATGGCAACTTCACTTCTAGGGGAAGAACCAGGTTGGGATCGACTCCTCTGGCCATGCTTGGCCCTACCT
 GTAATAAGATAGGCAGCCCCAGCCCGTCTCCCTCCTCCCTCTCGACAGCTCTTCTTCTCGGCAAAGG
 CTTCCACCCTTGAAACGCTCCTCGTCCTTCTTCCGCCAGCTGCAACGTAGTGGGTTCCAGTCTCTCA
 AGCTTCGGCGTGTCCGGGGCTCCAGGAACGGCGGCTCGTCTCGGCGGCTGCGGCGCCCGGCAGCAG
 CCGCGGCTGCCGCGGCCCTGGTGTCCGACTCGTTCAGTTCGCGCGGCTCGCTGGCTCCAGCGCCTTCTC
 CCTCACCTCCAGCAGCGCCGAGCCGCCGCCGCCGCCGCGAGCCGCCCTCCAGTCCGCCCTTCGCC
 AACGACTACTCTGTTTTCCAGGCCCCCGAGTTTCCGGGGCAGCGGCGGCGGCGGGGGCGGGCGGCG
 GCGGCTCTCCGCGCACTCGCAGGACGGCTCCCACCAGCCGGTGTTCATCTCAAGGTGCACACCTCTGT
 GGACGGGCTGCAGGGCATCTACCCGCGGTTGGGATGGCGCACCCGTACGAGTCTGGTTAAAGCCCTCG
 CACCCGGGCTGGGTGCTGCGGGCGAGGTGGGCTCGGCCGGCCCTCCAGCTGGTGGGACGTGGGGGCCG
 GCTGGATCGAGCTGCAGAACCCGAACAGCGCGGCTGCGCTGCCCGGCTCGCTGCACCCTGCCGCCGGGG
 GCTCAAACCTCGCTGCACTCGCCGCTCGGAGGCTACAACCTCGGATTACTCGGGCCTGAGTCACTCGGCC
 TTCAGCAGCGGCCCTCCTCGCACCTGCTCAGCCCCGCCGGGCAGCACCTCATGGACGGCTTCAAGCCAG
 TGCTACCCGGCTCCTACCCGACTCGGCCCGTTCGCCGCTGGCCGGCGGGGGGCTCCATGTTGAGCGC
 TGGGCTTCGGCGCCGCTGGGGGGCTCCCCGCGCTCCTCAGTTCGCCGCTACTCCGGCCGCCACCTGC
 GACTGCCCAACTGCCAGGAGGAGAGCGGCTGGGCTTCCGGGGCAGCTTCCGGCGCAAGGGCCTGC
 ACAGTGCACATCCCGGGCTGCGGCAAGGTGTACGGCAAGACTTCGCACCTCAAGGCGCACCTGCGCTG
 GCACACGGGCGAGCGGCCCTTCTGTGCAACTGGCTTTTCTGCGGCAAGCGCTTACGCGCTCCGACGAG
 CTGCAGCGGCACCTGCGGACCCACACCGCGGAGAGCGCTTCCGCTGTCCAGTTTGAACAAGCGCTTCA
 TGCGCAGCGACCCTCAGCAAGCACGTGAAGACGCACAGTGGCGGCGGCGGCGGCGGCTCGCGGG
 CTCGGGCGAGCGGCAAGAAGGCGAGCACCACAGCGAGCACAGCGCCGCCGGGCGAGCCGCCCTGC
 CACTCCCAGAGCTGCTGCAGCCCCGAGCCCGGCACCGCAACGGCTAGAG

ACGCGTACGCGGCCGCTCGAGCAGAACTCATCTCAGAAGAGGATCTGGCAGCAAATGATATCTGGATT
 ACAAGGATGACGACGATAAGGTTTAA

Protein Sequence:

>RC212880 representing NM_182700
 Red=Cloning site Green=Tags(s)

MATSLLGEEPRLGSTPLAMLAATCNKIGSPSPSSLDSSSSSFGKGFHPWKRSSSSSSASCNVVGSSLS
 SFGVSGSRNGSSSSAAAAAAAAAAAAALVDSFSCGGSPGSSAFSLTSSSSAAAAAAAAAAAASSPFA
 NDYSVFQAPGVSGSGGGGGGGSSAHSQDGSHPVFIKSVHTSVDLQGIYPRVGMHPYESWFKPS
 HPGLGAAGEVGSAGASSWVDVWAGWIDVQNPNSAAALPGSLHPAAGGLQTSLSHPLGGYNSDYSGLSHSA
 FSSGASSHLLSPAGQHLMDGFKPVLPGSYDPSAPLAGAGGSMLSAGPSAPLGGSPRSSARRYSGRATC
 DCPNCQEAERLGPAGASLRKGLHSCHIPGCGKYYGKTSHLKAHLRWHTGERPFVFNWFCGKRFRTRSE
 LQRHLRHTGKRFACPVCKRFMRSDHLSKHVKTHSGGGGGGSAGSGSGGKKGSDTDEHSAAGSPPC
 HSPELLQPPEPGHRNGLE

TRTRPLEQKLISEEDLAANDILDYKDDDDKV

Chromatograms:

https://cdn.origene.com/chromatograms/mk8023_b11.zip

Restriction Sites:

Sgfl-Mlul

Cloning Scheme:



ACCN: NM_182700

ORF Size: 1524 bp

OTI Disclaimer: The molecular sequence of this clone aligns with the gene accession number as a point of reference only. However, individual transcript sequences of the same gene can differ through naturally occurring variations (e.g. polymorphisms), each with its own valid existence. This clone is substantially in agreement with the reference, but a complete review of all prevailing variants is recommended prior to use. [More info](#)

OTI Annotation: This clone was engineered to express the complete ORF with an expression tag. Expression varies depending on the nature of the gene.

Components: The ORF clone is ion-exchange column purified and shipped in a 2D barcoded Matrix tube containing 10ug of transfection-ready, dried plasmid DNA (reconstitute with 100 ul of water).

- Reconstitution Method:
1. Centrifuge at 5,000xg for 5min.
 2. Carefully open the tube and add 100ul of sterile water to dissolve the DNA.
 3. Close the tube and incubate for 10 minutes at room temperature.
 4. Briefly vortex the tube and then do a quick spin (less than 5000xg) to concentrate the liquid at the bottom.
 5. Store the suspended plasmid at -20°C. The DNA is stable for at least one year from date of shipping when stored at -20°C.

RefSeq: [NM_182700.6](#)

RefSeq Size: 3670 bp

RefSeq ORF: 1527 bp

Locus ID: 221833

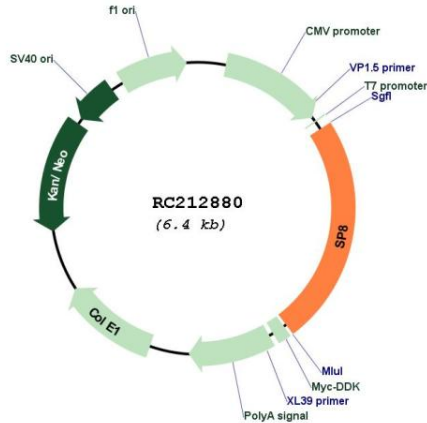
UniProt ID: [Q8IXZ3](#)

Cytogenetics: 7p21.1

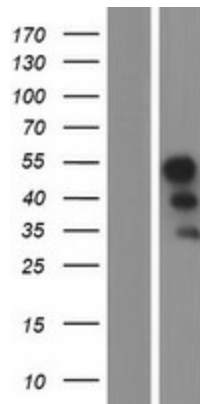
MW: 50.3 kDa

Gene Summary: The protein encoded by this gene is an SP family transcription factor that in mouse has been shown to be essential for proper limb development. Two transcript variants encoding different isoforms have been found for this gene. [provided by RefSeq, Jun 2011]

Product images:



Circular map for RC212880



Western blot validation of overexpression lysate (Cat# [LY405414]) using anti-DDK antibody (Cat# [TA50011-100]). Left: Cell lysates from untransfected HEK293T cells; Right: Cell lysates from HEK293T cells transfected with RC212880 using transfection reagent MegaTran 2.0 (Cat# [TT210002]).