

Product datasheet for **RC212877**

EIF4G1 (NM_004953) Human Tagged ORF Clone

Product data:

Product Type: Expression Plasmids
Product Name: EIF4G1 (NM_004953) Human Tagged ORF Clone
Tag: Myc-DDK
Symbol: EIF4G1
Synonyms: EIF-4G1; EIF4F; EIF4G; EIF4GI; P220; PARK18
Mammalian Cell Selection: Neomycin
Vector: pCMV6-Entry (PS100001)
E. coli Selection: Kanamycin (25 ug/mL)
ORF Nucleotide Sequence: >RC212877 representing NM_004953
Red=Cloning site Blue=ORF Green=Tags(s)

TTTTGTAATACGACTCACTATAGGGCGGCCGGAATTCGTCGACTGGATCCGGTACCGAGGAGATCTGCC
GCC**CGATCGCC**

ATGTCTGGGGCCCGACTGCCTCCACACCCACCCCTCCCCAGACGGGAGGCGGTCTGGAGCCTCAAGCTA
ATGGGGAGACGCCCCAGTTGCTGTCTATTGTCGCGCCAGATGACCGGTACAGGGAGCAATCATTGCTGA
CCGGCCAGGGCTGCCTGGCCAGAGCATAGCCCTCAGAATCCCAGCCTTCGTCGCTTCTCCGACCCCA
TCACCATCCCAGTCTTGAACCGGGTCTGAGCCTAATCTCGCAGTCTCTCTATTCTGGGGACACTA
TGACAACATACAAATGTCTGTAGAAGAATCAACCCCATCTCCCGTGAAACTGGGGAGCCATATCGCCT
CTCTCCAGAACCCACTCCTCTCGCCGAACCCATACTGGAAGTAGAAGTGACACTTAGCAAACCGGTTCCA
GAATCTGAGTTTTCTCCAGTCTCTCCAGGCTCCACCCCTTTGGCATCTCACACAGTGAAAATTCATG
AGCCTAATGGCATGGTCCCATCTGAAGATCTGGAACAGAGGTGGAGTCAAGCCCAGAGCTTGCTCCTCC
CCCAGCTTGCCCTCCGAATCCCCTGTGCCATTGCTCCAACCTGCCAACCTGAGGAACTGCTCAACGGA
GCCCCCTCGCCACCAGCTGTGGACTTAAGCCAGTCAGTGAGCCAGAGGAGCAGGCAAGGAGGTGACAG
CATCAGTGGCGCCCCCACCATCCCCTGTACTCCAGTACGGCTCCTCAGTACTTCCCCAGCTCA
GGAGGAGGAAATGGAAGAAGAAGAAGAAGGAAGAAGGAGAAGCAGGAGAAGCAGGAGAAGCTGAGAGT
GAGAAAGGAGGAGGAACTGCTCCCCCAGAGATACCCCTATTCAGCCAATTTGCTCAGAATTTGG
AGGCAGCAGCAGCACTCAAGTGGCAGTATCTGTGCCAAAGAGGAGACGGAAAATTAAGGAGCTAAATAA
GAAGGAGGCTGTTGGAGACCTTCTGGATGCCTCAAGGAGGCGAACCCGCGCAGTACCAGAGGTGAAAAAT
CAGCCTCTGCAGGCAGCAATCCAGGCCAGAGTCTGAGGGCAGTGGTGTGCCCCACGTCCTGAGGAAG
CAGATGAGACCTGGGACTCAAAGGAAGACAAAATTCACAATGCTGAGAACATCCAGCCCGGGGAACAGAA
GTATGAATATAAGTCAGATCAGTGAAGCCTCTAAACCTAGAGGAGAAAAACGTTACGACCGTGAGTTC
CTGCTTGGTTTTTCAGTTCATCTTTGCCAGTATGCAGAAGCCAGAGGGATTGCCACATATCAGTGACGTGG
TGCTGGACAAGGCCAATAAAACACCACTGCGGCCACTGGATCCCCTAGACTACAAGGCATAAATTTGTGG
CCCAGACTTCACTCCATCCTTTGCCAACCTTGCCGCGACAACCCCTTAGCACCCGTGGGCCCCCAAGGGGT



[View online >](#)

GGGCCAGGTGGGAGCTGCCCCGTGGGCCGGCTGGCCTGGGACCCCGCGCTCTCAGCAGGGACCCCGAA
AAGAACCACGCAAGATCATTGCCACAGTGTAAATGACCGAAGATATAAACTGAACAAAGCAGAGAAAGC
CTGAAACCCAGCAGCAAGCGGACGGCGCTGATAAGGATCGAGGGGAAGAAGATGCTGATGGCAGCAAA
ACCCAGGACCTATTCCGAGGGTGCCTCCATCCTGAATAAACTGACACCCAGATGTTCCAGCAGCTGA
TGAAGCAAGTGACGCAGCTGGCCATCGACACCGAGGAACGCTCAAAGGGGTCAATGACCTCATTTTGA
GAAGGCCATTTAGAGCCCAACTTCTCTGTGGCCTATGCCAACATGTGCCGCTGCCTCATGGCGTGAAA
GTGCCACTACGGAAAAGCCAACAGTGACTGTGAACTCCGAAAGCTGTTGTTGAATCGATGTCAGAAGG
AGTTTGAGAAAGACAAAGATGATGATGAGGTTTTTGAGAAGAAGCAAAAAGAGATGGATGAAGCTGCTAC
GGCAGAGGAACGAGGACGCTGAAGGAAGAGCTGGAAGAGGCTCGGGACATAGCCCGCGCGCTCTTTA
GGGAATATCAAGTTTATTGGAGAGTTGTTCAAAGTGAAGATGTTAACAGAGGCAATAATGCATGACTGTG
TGGTCAAAGTCTTAAGAACCATGATGAAGAGTCCCTTGAGTGCCTTTGTCGTCTGCTCACCACCATTGG
CAAAGACTGGACTTTGAAAAAGCCAAGCCCCGAATGGATCAGTATTTCAACCAGATGAAAAAATCATT
AAAGAAAAGAAGACGTCATCCCGCATCCGCTTTATGCTGCAGGACGTGCTGGATCTGCGAGGGAGCAATT
GGGTGCCACGCCGAGGGATCAGGGTCCAAGACCATTGACCAGATCCATAAGGAGGCTGAGATGGAAGA
ACATCGAGAGCACATCAAAGTGCAGCAGCTCATGGCCAAGGGCAGTGACAAGCGTCGGGGCGGTCTCCA
GGCCCTCCATCAGCCGTGGACTTCCCCTTGTTGATGATGGTGGCTGGAACACAGTTCATCAGCAAAAG
GTAGCCGCCCCATTGACACCTCACGACTACCAAGATCACCAAGCCTGGCTCCATCGATTCTAACACCA
GCTCTTTGCACCTGGAGGGCGACTGAGCTGGGGCAAGGGCAGCAGCGGAGGCTCAGGAGCCAAGCCCTCA
GACGCAGCATCAGAAGCTGCTCGCCAGCTACTAGTACTTTGAATCGCTTCTCAGCCCTTCAACAAGCGG
TACCCACAGAAAGCACAGATAATAGACGTGTGGTGCAGAGGAGTAGCTTGAGCCGAGAACGAGGCGAGAA
AGCTGGAGACCGAGGAGACCGCTAGAGCGGAGTGAACGGGGAGGGGACCGTGGGACCGGCTTGATCGT
GCGCGGACACCTGCTACCAAGCGGAGCTTACGCAAGGAAGTGGAGGAGCGGAGTAGAGAACGGCCCTCCC
AGCTGAGGGGCTGCGCAAGGCAGTACCTCACGGAGGATCGGGACCGTGGGCGGGATGCCGTGAAGCG
AGAAGCTGCCCTACCCCAAGTGAAGCCCTGAAGGCGGCTCTCTGAGGAGGAGTTAGAGAAGAAATCC
AAGGCTATCATTGAGGAATATCTCCATCTCAATGACATGAAAGAGGCAGTCCAGTGCCTGACAGGAGCTGG
CCTCACCTCCTTCTCTTATCTTGTACGGCATGGTGTGAGTCTACGCTGGAGCGCAGTGCCATTGC
TCGTGAGCATAAGGGCAGCTGCTGCACCAGCTGCTCTGTGCTGGGCATCTGTCTACTGCTCAGTACTAC
CAAGGGTTGTATGAAATCTTGAATTGGCTGAGGACATGGAATGACATCCCCACGTGTGGCTTACC
TAGCGGAAGTGGTAACACCCATTCTGCAGGAAGTGGGGTGGCCATGGGGAGCTGTTACAGGAGATTAC
AAAGCCTCTGAGACCGTTGGGCAAAGCTGCTTCCCTGTTGCTGGAGATCCTGGGCTCCTGTGCAAAAGC
ATGGGTCTAAAAGGTGGGACGCTGTGGCGAGAAGCCGGGCTTAGCTGGAAGGAATTTCTACCTGAAG
GCCAGGACATTGGTGCATTGCTGCTGAACAGAAGGTGGAGTATACCCTGGGAGAGGAGTCGGAAGCCCC
TGCCAGAGGGCACTCCCCTCCGAGGAGCTGAACAGGCAGCTGGAGAAGCTGCTGAAGGAGGGCAGCAGT
AACCAGCGGGTGTTCGACTGGATAGAGGCCAACCTGAGTGAAGCAGCAGATAGTATCCAACACGTTAGTTC
GAGCCCTCATGACGGCTGTCTGCTATTCTGCAATTAATTTTGGAGTCCCTCCGAGTGGACGTTGACGT
GCTGAAAGCGGAGCGAAGCTGCTGCAGAAATACCTGTGTGACGAGCAGAAGGAGCTACAGGCGCTCTAC
GCCCTCCAGGCCCTTGTAGTGACCTTAGAACAGCCTCCCAACCTGCTGCGGATGTTCTTTGACGCACTGT
ATGACGAGGACGTGGTGAAGGAGGATGCCTTCTACAGTTGGGAGAGTAGCAAGGACCCCGCTGAGCAGCA
GGCAAGGGTGTGGCCCTAAATCTGTACAGCCTTCTCAAGTGGCTCCGTGAAGCAGAGGAGGAGTCT
GACCACAAC

ACGCGTACGCGGCCGCTCGAGCAGAACTCATCTCAGAAGAGGATCTGGCAGCAATGATATCCTGGATT
ACAAGGATGACGACGATAAGGTTTAA

Protein Sequence: >RC212877 representing NM_004953
 Red=Cloning site Green=Tags(s)

MSGARTASTPTTPQGGGLEPQANGETPQVAVIVRPDDRSQGAIADRPGLPGPEHSPSESQPSSPSPTP
 SPSVLEPGSEPNLAVLSIPGDTMTTIQMSVEESTPISRETGEPYRLSPEPTPLAEPILEVEVTL SKPVP
 ESEFSSSPLQAPTPLASHTVEIHEPNGMVPSDELPEVESSPELAPPPACPSSESPVPIAPTAQPELLNG
 APSPPAVDLSPVSEPEEQAKEVTASVAPPTIPSATPATAPSATSPAQEEEMEEEEEEEEAGEAGEAES
 EKGGEELLPESTPIPANLSQNL EAAAATQVAVSVPKRRRIKELNKKAEAVGDLLDAFKEANPAVPEVEN
 QPPAGSNPGPESESGVPPRPEEADETWDKEDKIHNAENIQPGEQKYEYKSDQWKPLNLEEKRYDREF
 LLGFQFIFASMQKPEGLPHISDVVLDKANKTPLRPLDPTLQGINCGPDFTPSFANLGRITLSTRGPPRG
 GPGGELPRGPAGLGP RR SQGPRKEPRKI IATVLMTE DIKNKAEKAWKPSKRTAADKDRGEEDADGSK
 TQDLFRVR SILNKLTPQMFQQLMKQVTQLAIDTEERLKGVIDLIFEKAISEPNFSVAYANMCRCLMALK
 VPTTEKPTVTNFRKLLLNRCQKEFEKDKDDDEVFEKKQKEMDEAATAEERGRLKEELEEARDIARRSL
 GNIKFIGELFKL KMLTEAIMHDCVVKLLKNHDEESLECLRLLTTIGKDLDFEKAKPRMDQYFNQMEKII
 KEKKTSSRIRFMLQDVL DL RGSNWVPRRGDQGPKTIDQIHKEAEMEEHREHIKVVQQLMAKGS DKRRGGPP
 GPPI SRGLPLVDDGGWNTVPI SKGSRPIDTSRLTKITKPGSIDSNQLFAPGGRLSWGKGS GGSGAKPS
 DAASEAARPATSTLNRFSALQQAVPTESTDNRVVQRSSL SRERGEKAGDRGDRLE R SERGGDRGDRLDR
 ARTPATKRSFSKEVEERSRERPSQPEGLRKAASLTEDRDRGRDAVKREAALPPVSPLKAALSEELEKKS
 KAIIEEYHLHNDMKEAVQCVELASPLLFIFVRHGVESTLERSAIAREHMGQLLHQLLCAGHLSTAQYY
 QGLYEILELAEDMEIDIPHVWLYLAELVTPILQEGGVP MGELFREITKPLRPLGKAASLLEILGLLCKS
 MGPKKVGT LWREAGL SWKEFLPEGQDIGAFVAEQKVEYTLGEESEAPGQRALPSEELNRQLEKLLKEGSS
 NQRVFDWIEANLSEQQIVSNTLVRALMTAVCYS AII FETPLRVDVAVLKARAKLLQKYL CDEQKELQALY
 ALQALVVTLEQPPNLLRMFFDALYDEDVVKEDAFYSWESSKDPAEQQGKGVALKSVTAFFKWLREAEES
 DHN

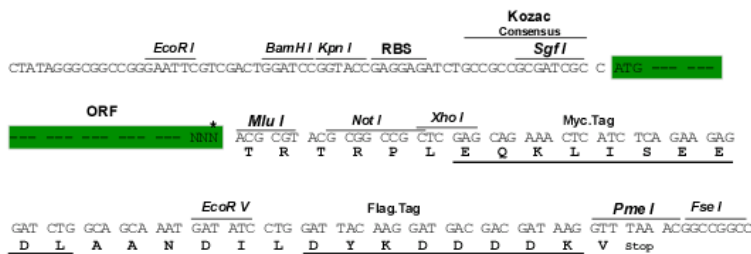
TRTRPLEQKLISEEDLAANDILDYKDDDDK V

Chromatograms: https://cdn.origene.com/chromatograms/mk6811_g11.zip

Restriction Sites: SgfI-MluI

Cloning Scheme:

Cloning sites used for ORF Shuttling:

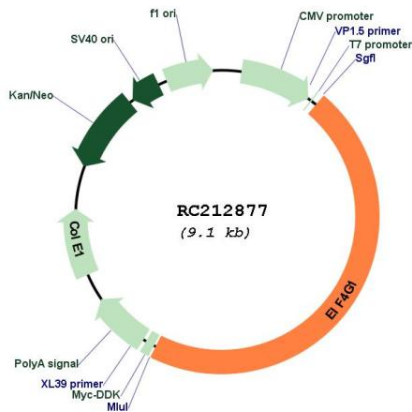


ACCN: NM_004953

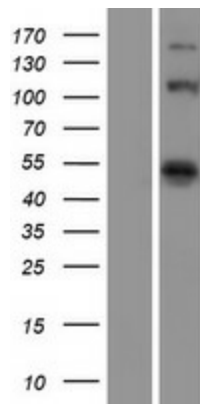
ORF Size: 4209 bp

OTI Disclaimer:	The molecular sequence of this clone aligns with the gene accession number as a point of reference only. However, individual transcript sequences of the same gene can differ through naturally occurring variations (e.g. polymorphisms), each with its own valid existence. This clone is substantially in agreement with the reference, but a complete review of all prevailing variants is recommended prior to use. More info
OTI Annotation:	This clone was engineered to express the complete ORF with an expression tag. Expression varies depending on the nature of the gene.
Components:	The ORF clone is ion-exchange column purified and shipped in a 2D barcoded Matrix tube containing 10ug of transfection-ready, dried plasmid DNA (reconstitute with 100 ul of water).
Reconstitution Method:	<ol style="list-style-type: none">1. Centrifuge at 5,000xg for 5min.2. Carefully open the tube and add 100ul of sterile water to dissolve the DNA.3. Close the tube and incubate for 10 minutes at room temperature.4. Briefly vortex the tube and then do a quick spin (less than 5000xg) to concentrate the liquid at the bottom.5. Store the suspended plasmid at -20°C. The DNA is stable for at least one year from date of shipping when stored at -20°C.
RefSeq:	NM_004953.5
RefSeq Size:	5045 bp
RefSeq ORF:	4215 bp
Locus ID:	1981
UniProt ID:	Q04637
Cytogenetics:	3q27.1
Domains:	eIF5C, MIF4G, MA3
Protein Pathways:	Viral myocarditis
MW:	154.6 kDa
Gene Summary:	The protein encoded by this gene is a component of the multi-subunit protein complex EIF4F. This complex facilitates the recruitment of mRNA to the ribosome, which is a rate-limiting step during the initiation phase of protein synthesis. The recognition of the mRNA cap and the ATP-dependent unwinding of 5'-terminal secondary structure is catalyzed by factors in this complex. The subunit encoded by this gene is a large scaffolding protein that contains binding sites for other members of the EIF4F complex. A domain at its N-terminus can also interact with the poly(A)-binding protein, which may mediate the circularization of mRNA during translation. Alternative splicing results in multiple transcript variants, some of which are derived from alternative promoter usage. [provided by RefSeq, Aug 2010]

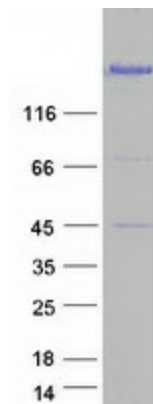
Product images:



Circular map for RC212877



Western blot validation of overexpression lysate (Cat# [LY417630]) using anti-DDK antibody (Cat# [TA50011-100]). Left: Cell lysates from untransfected HEK293T cells; Right: Cell lysates from HEK293T cells transfected with RC212877 using transfection reagent MegaTran 2.0 (Cat# [TT210002]).



Coomassie blue staining of purified EIF4G1 protein (Cat# [TP312877]). The protein was produced from HEK293T cells transfected with EIF4G1 cDNA clone (Cat# RC212877) using MegaTran 2.0 (Cat# [TT210002]).