

Product datasheet for RC212874

MAGEB10 (NM_182506) Human Tagged ORF Clone

Product data:

Product Type:	Expression Plasmids
Product Name:	MAGEB10 (NM_182506) Human Tagged ORF Clone
Tag:	Myc-DDK
Symbol:	MAGEB10
Mammalian Cell Selection:	Neomycin
Vector:	pCMV6-Entry (PS100001)
E. coli Selection:	Kanamycin (25 ug/mL)
ORF Nucleotide Sequence:	>RC212874 ORF sequence Red=Cloning site Blue=ORF Green=Tags(s)

TTTTGTAATACGACTCACTATAGGGCGGCCGGAATTCGTCGACTGGATCCGGTACCGAGGAGATCTGCC
GCC**CGATCGCC**

ATGCCTCGAGGTCAGAAGAGTAACTCCGTGCCAGGGAAAAACGCCGTCAGGCCGAGGAGGGCTGGAAG
ATTTGATAGATGCTCTGGACATTTTAGAAGAGGAGGAAGAATCTCCCCCTCTGCCTCTGCTTGTGGAA
GGATGTTTCCAGAGTTCACCTTGATGGGGCATCCAACAATCCCCATGGACTTCAGGAAGCCCAATCCACC
AGCACATCTGCTACAGCTGCTTCACACACAAGACATCCCGAAGGAGTCAACGACCAATGGAAGAAAAGGC
CAATATGCACACAAGATCTAGAAGCCACTGATAGCTTTCCAGAGGCCCTGTAGATGAGAAAGTAATTAT
ATTGGTGCATTACTTGCTGTACAAGTACCAATGAAAGAGCCATTACAAGGCAGATATGCTGAGAAAT
GTAACCCAAATGTCCAAGAGCCAGTTCCCTGTAATCCTGAGCAGAGCTTCTGAGCACCTGGAGCTGATCT
TTGGTCTTGACCTGAAGGAAGTGGAGCCTAATAAGCACATCTATGTCCTTGTCAACAACTAGATCTAGG
CTGTGATGCAAAGCTGAGTGATGAAACAGGCGTGCCCAAGACTGGCCTGCTGATGACTGTCCTGGGTATT
ATCTTCACAAATGGCAATTGTGTCGCTGAGGAGGAAGTCTGAAAGTGTAAACACGATGGGGTTATATG
ACGGAATTGAGCACTTCATGTTTGGGGAGCCAGGAAGCTCCTTACCAAAGATTTGGTGAAGAAAATTA
CCTGGAGTACCAGCAAGTGCCCAACAGTGATCCTCCACGCTATCAATTCATGGGGCCCAAGAGCCCAT
GCTGAAACCAGCAAGATGAAAGTCTTGAGTTTTTGGCCAAGGTAATGATACAGCTCCCAGTGAATTCT
CAAAGTGTATACAGAGGCTTTACAAGATGAGGAAGAGAGGCCAGAGCCAGAGTTGCAGCCAAGGCTCG
CGTTAGTGCCACAGCCGGTGCACGTTCCAAGGTTAAGTCCAGCAAGTCCCTCCAAGTGCAG

ACGCGTACGCGGCCGCTCGAGCAGAACTCATCTCAGAAGAGGATCTGGCAGCAAATGATATCCTGGATT
ACAAGGATGACGACGATAAGGTTTAA



[View online »](#)

Protein Sequence: >RC212874 protein sequence
Red=Cloning site Green=Tags(s)

MPRGQKSKLRAREKRRQARGGLEDLIDALDILEEEEEPPPSASACLKDVSQSSLDGASNNPHGLQEAQST
 STSATAASHTRHPEGVNDQMEERP ICTQDLEATDSFPRGPVDEKVIILVHYLLYKQMKEPITKADMLRN
 VTQMSKSQFPVILSRASEHLELIFGLDLKEVEPNKHIYVLVNKLDLGDACLSDETGVPKTLMLTVLGI
 IF TNGNCVAEEEEVWKVFNTMGLYDGI EHFMFGEPRKLLTKDLVKNYLEYQQVPNSDPPRYQFLWGPRAH
 AETSKMKVLEFLAKVNDTAPSEFSN WYTEALQDEEERARARVA AKARVSATAGARSKVKSSKSQLQ

TRTRPLEQKLISEEDLAANDILDYKDDDDKV

Chromatograms: https://cdn.origene.com/chromatograms/mk6448_h07.zip

Restriction Sites: Sgfl-MluI

Cloning Scheme:

Cloning sites used for ORF Shuttling:



* The last codon before the Stop codon of the ORF

ACCN: NM_182506

ORF Size: 1041 bp

OTI Disclaimer: The molecular sequence of this clone aligns with the gene accession number as a point of reference only. However, individual transcript sequences of the same gene can differ through naturally occurring variations (e.g. polymorphisms), each with its own valid existence. This clone is substantially in agreement with the reference, but a complete review of all prevailing variants is recommended prior to use. [More info](#)

OTI Annotation: This clone was engineered to express the complete ORF with an expression tag. Expression varies depending on the nature of the gene.

Components: The ORF clone is ion-exchange column purified and shipped in a 2D barcoded Matrix tube containing 10ug of transfection-ready, dried plasmid DNA (reconstitute with 100 ul of water).

Reconstitution Method:

1. Centrifuge at 5,000xg for 5min.
2. Carefully open the tube and add 100ul of sterile water to dissolve the DNA.
3. Close the tube and incubate for 10 minutes at room temperature.
4. Briefly vortex the tube and then do a quick spin (less than 5000xg) to concentrate the liquid at the bottom.
5. Store the suspended plasmid at -20°C. The DNA is stable for at least one year from date of shipping when stored at -20°C.

RefSeq: [NM_182506.3](#), [NP_872312.2](#)

RefSeq Size: 1953 bp

RefSeq ORF: 1044 bp

Locus ID: 139422

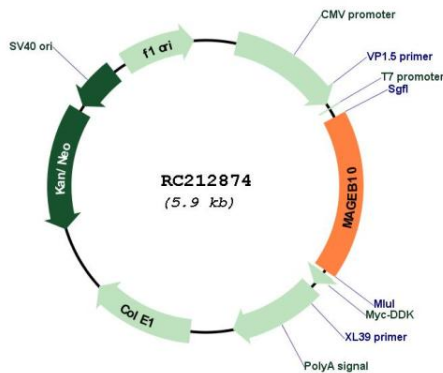
UniProt ID: [Q96LZ2](#)

Cytogenetics: Xp21.3

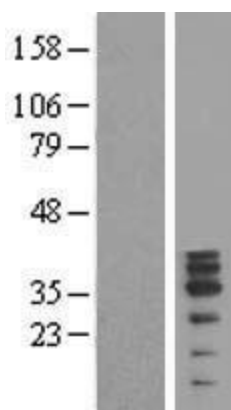
MW: 38.9 kDa

Gene Summary: This gene encodes a member of the B subfamily of the melanoma associated antigen protein family. The encoded protein is specifically expressed in testis and tumor cells. [provided by RefSeq, Apr 2010]

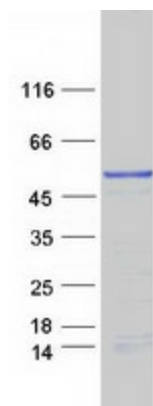
Product images:



Circular map for RC212874



Western blot validation of overexpression lysate (Cat# [LY405526]) using anti-DDK antibody (Cat# [TA50011-100]). Left: Cell lysates from untransfected HEK293T cells; Right: Cell lysates from HEK293T cells transfected with RC212874 using transfection reagent MegaTran 2.0 (Cat# [TT210002]).



Coomassie blue staining of purified MAGEB10 protein (Cat# [TP312874]). The protein was produced from HEK293T cells transfected with MAGEB10 cDNA clone (Cat# RC212874) using MegaTran 2.0 (Cat# [TT210002]).