

Product datasheet for **RC212871**

SYT16 (NM_031914) Human Tagged ORF Clone

Product data:

| | |
|---------------------------|--|
| Product Type: | Expression Plasmids |
| Product Name: | SYT16 (NM_031914) Human Tagged ORF Clone |
| Tag: | Myc-DDK |
| Symbol: | SYT16 |
| Synonyms: | CHR14SYT; Strep14; SYT14L; syt14r; yt14r |
| Mammalian Cell Selection: | Neomycin |
| Vector: | pCMV6-Entry (PS100001) |
| E. coli Selection: | Kanamycin (25 ug/mL) |



[View online »](#)

ORF Nucleotide
Sequence:

>RC212871 ORF sequence
Red=Cloning site Blue=ORF Green=Tags(s)

TTTTGTAATACGACTCACTATAGGGCGGCCGGAATTCGTCGACTGGATCCGGTACCGAGGAGATCTGCC
GCC**CGGATCGCC**

ATGGTGTGGCCATGGCGTCTCAGGATGCTCAGAACTTCTCCAGCCTTTCTCTTCTGGATATCTCGGG
TTTATGAAGCTCTCCAGCAAGCAGGAGATGTTATCTGCTTCGCTGGTTAACATAAGCAAACAAGACTC
TAAATTGAGTGACAACTAGATCAGGACTTAGATAATATTCAGATTTCAGGAAACGTACTTTGAAGATGAA
GAACAAGACAATGATTGGAGTCAAGAGGATGCAAATTCCTTGTTCCTGAAGTGGATCATTTCTCATGTT
GTAATAGTGATTTGCAGGACTCTGCCAAAATTCAAGCCCAAGCCTTAGCCAACATGCAAAGGACTCATG
TTCCACAATGTCCAGTGGCCCAATTGGGCCAGTGATGACCGCAAGTTACCACATGTGCTTTCTTCTATT
GCGGAGGAAGAGCATCACCTTGAAGCAAGCAAGTGGCCTTCAACATGGCTTTGACAGCCAGCTCCCTG
GTAATTTAGAACTGTTAATGAAAAAAGCAAGTCAACAGCTTTGGGGATGACGAAGAGCTGTCCACATC
TTCTGACAGTGACGAGGAGGTGATCAAACAATTTGAGATTTCCGTGTCCCGGTCCAGAGTTCCGTTCA
GTGACATCTGAGAAAGGAAAGCAGACAGGATTGGAGCAGAAACAAAATTCAGCCGTTCTGTTGTGACAC
ACGGAGAAGATGGCACAGAAGTATCTGCCTGCGAAGATTTGGATGGAGCCAGCCAACGGCGTTATTTCTGA
GAATCTCTCCTACGGTGAAGATGACCACATCCCTGCTCACTCACAGTCCCATGTGAAAGAGGGGATGCC
AAACACCACGGCAGATCTACCAAGAGTCCAGTGTGGTCCAAAGCCTCAGGCGCCAATCCACAGAGGGCA
GCTTGGAGATGGAGACAGCTTTTAAAGCCGGGGATTTGAAGATTCCTATGCCACTGACAGCTCCTCCAT
GTGGAGTCCAGAGAACAGGACAGGACCAATTTGCAGTGCCATCCGGGGTCTCAGAGCCATCTCAAAG
TGTGGTGACCTAGATGTCATCTTTGAATATAGAGCCGCCAGCCAGAAGCTCACAGTGACCATTGTGAGGG
CACAGGGCCTCCAGATAAGGACCGAAGTGGTGTCAACTCCTGGCAAGTTCATGTAGTGTCTGCCTGG
TAAGAAACACAGGGGCAGGACGAACATACAGAGAGGGCCCAACCCGCTTTCAGGGAGAAGGTACCTTT
GCCAAGCTGGAGCCAGAGATGTGGCTGCCTGTCTGTCCTCCGCTTCCGCCTGTACGCTGCCCGAAGATGA
CCCGAGAGAGAATGATGGGAGAGAACTATTCTATCTCAGCCACCTGCACCCAGAAGGGGAAATGAAAGT
GACTCTGGTTCTGGAGCCAAGAAGTAATAAAGCAGTGGAGGGTCTCCGCTCAGCCCATCTGCGGTTTCT
CACAGTGATAGTACTTCCACGCAGTCGCTGTCTCATGGAGGGGCGCCAGAGCTGTTGGTGGGGCTCT
CGTACAATGCCACAACGGGGCGATTATCTGTGAAATGATCAAAGGCAGCCATTTCCGAAACCTCGCTGT
TAACCGAGCACCTGATACATATGAAAACTCTTCTCCTCAATTCTGTGGTCAAGAGATGTCCCGTTGC
AAGACGTCCATTCGGCGTGGTCAGCCCAATCCTGTCTATAAGGAGACCTTTGTTTTCCAGGTGGCCCTCT
TTCAGCTGTCTGATGTCAGTGTGATTTCCGTTTATAACAGGCGTACTATGAAGCGTAAAGAGATGAT
TGCTGGATTGCCTGGGCCAGAACAGCAGTGGAGAGGAGGAACAAGATCACTGGGAGGAGATGAAGGAA
ACCAAAGGCCAGCAGATCTGCAGATGGCACACTTTGCTGGAATCC

ACGCGTACGCGGCCGCTCGAGCAGAACTCATCTCAGAAGAGGATCTGGCAGCAATGATATCCTGGATT
ACAAGGATGACGACGATAAGGTTTAA

Protein Sequence: >RC212871 protein sequence
Red=Cloning site Green=Tags(s)

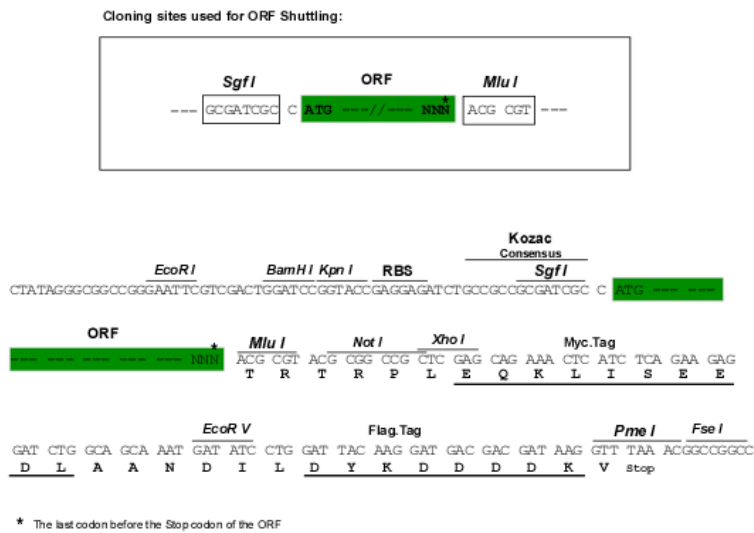
MVLAMASQDAQNFFQPFSSWISRVEALQQAGDMLSASLVNISKQDSKLSDKLDQDLNIIQIETIFEDE
EQDNDWSQEDANSLFLEVDHFSCCNSDLQDSAQNSPQLSQHAKDSCSTMSQWPWASDDRKLPHVLS
AEEHHLEKQRSLQHGFDSQLPGTLETVNGKKQVNSFGDDEELSTSDSDEEVIKQFEISVSRSQSF
VTSEKQQTGLEQKPKFSRSLTHGEDGTEVSACEDLDGASQRRYSENLSYGEDDHIPAHSQSPCER
GDAKHHGTSHQESSVVQSLRRQSTEGSLEMETAFAFNSRGFEDSYATDSSMWSPEEQDRTNLQV
PSGVSEPI SKCGDLDIVFEYRAASQKLTVTIVRAQGLPKDRSGVNSWQVHVLLPGKKHRGR
TNIQRGPNPVFREKVTF AKLEPRDVAACAVRFRLYAARKMTRERMMEKLFYLHLHPEGEMKVT
LVLEPRSNISSGGSPSPSAVSHSDSTSSTQSLSHGGAPPELLVGLSYNATTGRLSVEMIKGSHFR
NLAVNRPD TYGKFLLLNSVQGEMSRC KTSIRRGQPNPVYKETFFVQVALFQLSDVTLMISVY
NRRMTMKRKEIGWIALGQNSSGEEEQDHWEEMKE TKGQQICRWHTLLES

TRTRPLEQKLISEEDLAANDILDYKDDDDKV

Chromatograms: https://cdn.origene.com/chromatograms/mk6603_d03.zip

Restriction Sites: SgfI-MluI

Cloning Scheme:



ACCN: NM_031914

ORF Size: 1935 bp

OTI Disclaimer: The molecular sequence of this clone aligns with the gene accession number as a point of reference only. However, individual transcript sequences of the same gene can differ through naturally occurring variations (e.g. polymorphisms), each with its own valid existence. This clone is substantially in agreement with the reference, but a complete review of all prevailing variants is recommended prior to use. [More info](#)

OTI Annotation: This clone was engineered to express the complete ORF with an expression tag. Expression varies depending on the nature of the gene.

Components: The ORF clone is ion-exchange column purified and shipped in a 2D barcoded Matrix tube containing 10ug of transfection-ready, dried plasmid DNA (reconstitute with 100 ul of water).

Reconstitution Method:

1. Centrifuge at 5,000xg for 5min.
2. Carefully open the tube and add 100ul of sterile water to dissolve the DNA.
3. Close the tube and incubate for 10 minutes at room temperature.
4. Briefly vortex the tube and then do a quick spin (less than 5000xg) to concentrate the liquid at the bottom.
5. Store the suspended plasmid at -20°C. The DNA is stable for at least one year from date of shipping when stored at -20°C.

RefSeq: [NM_031914.2](#), [NP_114120.2](#)

RefSeq Size: 3137 bp

RefSeq ORF: 1938 bp

Locus ID: 83851

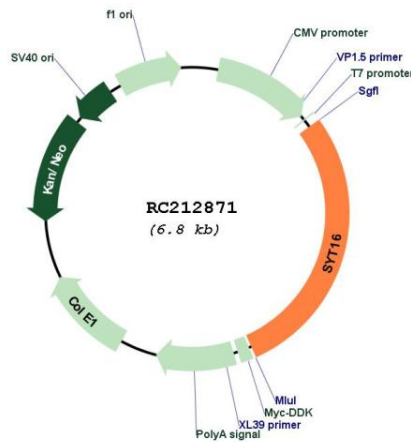
UniProt ID: [Q17RD7](#)

Cytogenetics: 14q23.2

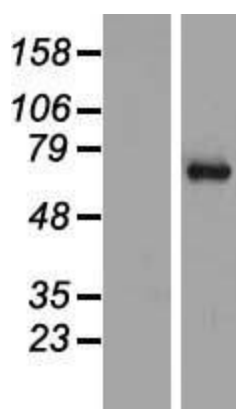
MW: 72.2 kDa

Gene Summary: May be involved in the trafficking and exocytosis of secretory vesicles in non-neuronal tissues. Is Ca(2+)-independent.[UniProtKB/Swiss-Prot Function]

Product images:



Circular map for RC212871



Western blot validation of overexpression lysate (Cat# [LY410443]) using anti-DDK antibody (Cat# [TA50011-100]). Left: Cell lysates from untransfected HEK293T cells; Right: Cell lysates from HEK293T cells transfected with RC212871 using transfection reagent MegaTran 2.0 (Cat# [TT210002]).