

## Product datasheet for RC212868

### SPTBN1 (NM\_003128) Human Tagged ORF Clone

#### Product data:

Product Type:	Expression Plasmids
Product Name:	SPTBN1 (NM_003128) Human Tagged ORF Clone
Tag:	Myc-DDK
Symbol:	SPTBN1
Synonyms:	betaSpII; ELF; HEL102; SPTB2
Mammalian Cell Selection:	Neomycin
Vector:	pCMV6-Entry (PS100001)
E. coli Selection:	Kanamycin (25 ug/mL)
ORF Nucleotide Sequence:	>RC212868 representing NM_003128 Red=Cloning site Blue=ORF Green=Tags(s)

CTATAGGGCGCCCGGAATTCGTCGACTGGATCCGGTACCGAGGAGATCTGCCGCCGCGATCGCCGGCCG  
GCC

ATGACGACCACAGTAGCCACAGACTATGACAACATTGAGATCCAGCAGCAGTACAGTGATGTCAACAACC  
GCTGGGATGTCGACGACTGGGACAATGAGAACAGCTCTGCGCGGCTTTTTGAGCGGTCCCGCATCAAGGC  
TCTGGCAGATGAGCGTGAAGCCGTGCAGAAGAAGACCTTACCAAGTGGGTCAATCCCACCTTGCCCGT  
GTGTCTGCCGGATCACAGACCTGTACACTGACCTTCGAGATGGACGGATGCTCATCAAGCTGCTGGAGG  
TCCTCTCTGGAGAGAGGCTGCCTAAACCCACCAAGGGACGAATGCGCATCCACTGCTTAGAGAATGTGGA  
CAAGGCCCTTCAGTTCCTGAAGGAGCAGAGAGTCCATCTTGAGAACATGGGGTCCCATGACATCGTGGAT  
GGAAACCACCGGCTGACCCTTGGCCTCATCTGGACCATCATCCTGCGCTTCCAGATCCAGGATATCAGTG  
TGGAAACTGAAGACAACAAGAGAAGAAATCTGCCAAGGATGCATTGCTGTTGTGGTGCCAGATGAAGAC  
AGCTGGGTACCCCAATGTCAACATTCACAATTTACCAGTGGAGGGACGGCATGGCCTTCAATGCA  
CTGATACACAACACCGGCTGACCTGATAGATTTGACAACTAAAGAAATCTAACGCACACTACAACC  
TGCAGAAATGCATTTAATCTGGCAGAACAGCACCTCGGCCTCACTAACTGTTGGACCCGAAGACATCAG  
CGTGGACCATCCTGATGAGAAGTCCATAATCACTTATGTGGTGACTTATTACCCTACTTCTCTAAGATG  
AAGGCCTTAGCTGTTGAAGGAAAACGAATTGAAAGGTGCTTGACAATGCTATTGAAACAGAAAAAATGA  
TTGAAAAGTATGAATCACTTGCCTCTGACCTTCTGGAATGGATTGAACAACCATCATCTCTGAACAA  
TCGCAAAATTTGCCAATTCAGTGGTGGGGTTCAACAGCAGCTTCAAGCATTCAACACTTACCAGCTGTG  
GAGAAACCACCAAAATTTACTGAGAAGGGGAATTGGAAGTGCTGCTCTTACCATTGAGAGCAAGATGA  
GGGCCAACCAACGAGAAGGTCTACATGCCCGGGAGGGGAAGCTCATCTCTGACATCAACAAGGCCTGGGA  
AAGACTGGAAAAAGCGGAACACGAAAGAGAAGTGGCTTTGCGGAATGAGCTCATAAGACAGGAGAACTG  
GAACAGCTCGCCCGCAGATTTGATCGCAAGGCAGCTATGAGGGAGACTTGGCTGAGCGAAAACAGCGTC  
TGGTGTCTCAGGACAACCTTTGGGTTTACCTTCTGCAGTTGAGGCCGCCACAAAAAGCAGGAGCCAT  
TGAGACAGACATTGCCGCATACGAGGAGCGTGTGCAGGCTGTGGTAGCCGTGCCAGGGAGCTCGAGGCC



GAGAATTACCACGACATCAAGCGCATCACAGCGAGGAAGGACAATGTCATCCGGCTCTGGGAATACCTAC  
TGGAACTGCTCAGGGCCCGGAGACAGCGGCTCGAGATGAACCTGGGGCTGCAGAAGATATCCAGGAAAT  
GCTCTACATTATGGACTGGATGGATGAAATGAAGTGCTAGTATTGTCTCAAGACTATGGCAAACACTTA  
CTTGGTGTGGAAGACCTGTTACAGAAGCACACCCTGGTTGAAGCAGACATTGGCATCCAGGCAGAGCGGG  
TGAGAGGTGTCAATGCCTCCGCCAGAAGTTCGCAACAGACGGGAAGGTTACAAGCCCTGTGACCCCA  
GGTGATCCGAGACCCGTGGCCACATGGAGTTCTGTTATCAAGAGCTTTGCCAGCTGGCGGTGAGCCG  
AGGGCCCGTCTGGAAGAGTCCCAGCCCTCTGGAAGTTCTTCTGGGAGATGGCAGAAAGAGGAAGCTGGA  
TACGGGGAGAAGGAGAAGATCCTGTCTCCTCGGACGATTACGGGAAAGACCTGACCAGCGTCATGCGCCTGCT  
CAGCAAGCACCGGGCTTCGAGGACGAGATGAGCGGCCGAGTGGCCACTTTGAGCAGGCCATCAAGGAA  
GGCAAGACATGATCGCGGAGGAGCACTTCGGGTGCGAGAAGATCCGTGAGAGGATCATTACATCCGGG  
AGCAGTGGGCCAACCTAGAGCAGCTCTCGGCCATTGGAAGAAGCGCCTGGAGGAGGCTCCCTGCTGCA  
CCAGTTCAGGCAGATGCTGATGACATTGATGCCTGGATGCTGGACATCCTCAAGATTGTCTCCAGCAGC  
GACGTGGCCACGATGAGTATCCACACAGTCTCTGGTCAAGAAACACAAGGACGTGGCGGAAGAGATCG  
CCAATTACAGGCCACCCTTGACAGCTGCACGAACAAGCCAGCGCCCTCCCCAGGAGCATGCCGAGTC  
TCCAGACGTGAGGGCAGGCTGTGGGCATCGAGGAGCGGTATAAGGAGGTGGCAGAGCTGACGCGGCTG  
CGGAAGCAGGCACTCCAGGACACTCTGGCCCTGTACAAGATGTTACGCGAGGCTGATGCCTGTGAGCTCT  
GGATCGACGAGAAGGAGCAGTGGCTCAACAACATGCAGATCCCAGAGAAGCTGGAGGATCTGGAGGTCT  
CCAGCACAGATTTGAGAGCCTAGAACCAGAAATGAACAACCAGGCTTCCCAGGTTGACGTGGTGAACCAG  
ATTGCACGCCAGCTGATGCACAGCGGCCACCAAGTGAGAAGGAAATCAAAGCCCAGCAGGACAACTCA  
ACACAAGTGGAGCCAGTTCAGAGAAGTGGTTGACAGGAAGAAGGATGCCTCCTGTCTGCCCTGAGCAT  
CCAGAACTACCACCTCGAGTGAATGAAACCAATCCTGGATTCGGGAAAAGACCAAGGTGATCGAGTCC  
ACCCAGGACCTGGGCAATGACCTGGCTGGCGTCTGCGCCTGCAGCGCAAGCTGACCGCATGGAGCGGG  
ACTTGGTGGCCATTGAGGCAAGCTGAGTGACCTGCAGAAGGAGCGGAGAAGCTGGAGTCCGAGCACCC  
CGACCAAGGCCAGGCCATCCTGTCTCGGCTGGCCGAGATCAGCGACGTGTGGGAGGAGATGAAGACCAC  
CTGAAAAACCGAGAGGCCTCCCTGGGAGAGGCCAGCAAGCTGCAGCAGTTCCTACGGGACTTGGACGACT  
TCCAGTCTGGCTCTTAGGACCCAGACAGCGATCGCCTCGGAGGACATGCCAAACACCCTGACCGAGGC  
TGAGAAGCTGCTCAGCAGCAGGAGAACATCAAGAATGAGATCGACAACCTACGAGGAGGACTACCAGAAG  
ATGAGGGACATGGGCGAGATGGTACCCAGGGCAGACCGATGCCAGTACATGTTTCTGCGGCAGCGGC  
TGCAGGCCCTGGACACTGGATGGAACGAGCTCCACAAGATGTGGGAGAACAGACAAAATCTCTATCCCA  
GTCACATGCTACCAGCAGTTCCTCAGAGACACGAAGCAAGCCGAAGCCTTTCTTAAACACAGGAGTAT  
GTTCTGGCTCACACTGAAATGCCTACCACCTTGAAGGAGCTGAAGCAGCAATAAAAAGCAAGAGGACT  
TCATGACCACCATGGACGCCAATGAGGAGAAGATCAATGCTGTGGTGGAGACTGGCCGGAGGCTGGTGG  
CGATGGGAACATCAACTCAGATCGCATCCAGGAGAAGGTGGACTCTATTGATGACAGACATAGGAAGAAT  
CGTGAGACAGCCAGTGAACCTTTGATGAGGTTGAAGGACAACAGGGATCTACAGAAATCCTGCAAGATT  
GTCAAGAGCTGTCTCTGGATCAATGAGAAGATGCTCACAGCCCAGGACATGTCTTACGATGAAGCCAG  
AAATCTGCACAGTAAATGGTTGAAGCATCAAGCATTTATGGCAGAACCTGCATCCAACAAAGAATGGCTT  
GACAAAATCGAGAAGGAAGGAATGCAGCTCATTTCAGAAAAGCCTGAGACGGAAGCTGTGGTGAAGGAGA  
AACTCACTGGTTTACATAAAATGTGGGAAGTCTTGAATCCAACCTACCCAGACAAAAGGCCAGCGGCTCTT  
ATGCAAAACAAGGCCGAACCTTTTACCCAGAGCTGTGCAGATCTAGACAAAATGGCTGCACGGCCTGGAG  
AGTCAGATTCACTGTGACTATGGCAACACCTGACCAAGTGTCAATATCCTGCTGAAAAAGCAACAGA  
TGCTGGAGAATCAGATGGAAGTGCAGGAAGAAGGAGATCGAAGAGCTCCAAGCCAAGCCAGGCCCTGAG  
TCAGGAAGGGAAGAGCACCGACGAGGTAGACAGCAAGCGCCTCACCGTGCAGACCAAGTTCATGGAGTTG  
CTGGAGCCCTTGAACGAGAGGAAGCATAACCTGCTGGCCTCCAAAGAGATCCATCAGTTCACAGGGATG  
TGGAGGACGAGATCTTGTGGTTGGAGAGAGGATGCCTTTGGCAACTCCACGGATCATGGCCACAACCT  
CCAGACTGTGCAGCTGTTAATAAAGAAAAATCAGACCCTCCAGAAAGAAATCCAGGGCACCAGCCTCGC  
ATTGACGACATCTTTGAGAGGAGCCAAAACATCGTCACTGACAGCAGCAGCTCAGCGCTGAGGCCATCA  
GACAGAGGCTTGGCGACCTGAAGCAGCTGTGGGTCTCCTCATTGAGGAGACAGAGAAACGCCACAGGCG  
GCTGGAGGAGGCCACAGGGCCAGCAGTACTACTTTGACGCTGCTGAGGCCGAAGCCTGGATGAGCGAG  
CAGGAGCTGTACATGATGTCAGAGGAGAAGGCCAAGGATGAGCAGAGTGTCTCCATGTTGAAGAAGC  
ACCAGATCTTAGAACAAGCTGTGGAGGACTATGCAGAGACCGTGCATCAGCTCTCCAAGACCAGCCGGGC  
CCTGGTGGCCGACAGCCATCCTGAAAGTGAGCGCATTAGCATGCGGCAGTCCAAGTGGATAAACTGTAC  
GCTGGTCTGAAAGACCTTGCTGAAGAGAGAAGAGGCAAGCTGGATGAGAGACACAGGTTATTCCAGCTCA

ACCGGGAGGTGGACGACCTGGAGCAGTGGATCGCTGAGAGGGAGGTGGTGCAGGGTCCCATGAACTGGG  
ACAGGACTATGAGCATGTCACGATGTTACAAGAACGATTCGGGGAGTTTGCCCGAGACACCGGGAACATT  
GGGCAGGAGCGCGTGGACACGGTCAATCACCTGGCAGATGAGCTCATCAACTCTGGACATTCAGATGCCG  
CCACCATCGCTGAATGGAAGGATGGCCTCAATGAAGCCTGGGCCGACCTCCTGGAGCTCATTGACACAAG  
AACACAGATTCTTGCCGCTTCTATGAACTGCACAAGTTTTACCACGATGCCAAGGAGATCTTTGGGCGT  
ATACAGGACAAACACAAGAACTCCCTGAGGAGCTTGGGAGAGATCAGAACACAGTGGAGACCTTACAGA  
GAATGCACACTACATTTGAGCATGACATCCAGGCTCTGGGCACACAGGTGAGGCAGCTGCAGGAGGATGC  
AGCCCGCCTCCAGGCGGCCTATGCGGGTGACAAGGCCGACGATATCCAGAAGCGCGAGAACGAGGTCCTG  
GAAGCCTGGAAGTCCCTCCTGGACGCTGTGAGAGCCGCAAGGTGCGGCTGGTGGACACAGGGGACAAGT  
TCCGCTTCTTTCAGCATGGTGCAGCAGCTCATGCTCTGGATGGAGGATGTCATCCGGCAGATCGAGGCCCA  
GGAGAAGCCAAGGGATGTATCATCTGTTGAACTCTTAATGAATAATCATCAAGGCATCAAAGCTGAAATT  
GATGCACGTAATGACAGTTTCAACCTGCATTGAACTTGGGAAATCCCTGTTGGCGAGAAAACACTATG  
CATCTGAGGAGATCAAGGAAAAATTACTGCAGTTGACGGAAAAGAGGAAAGAAATGATCGACAAGTGGGA  
AGACCGATGGGAATGGTTAAGACTGATTCTGGAGGTCCATCAGTTCTCAAGAGACGCCAGTGTGGCCGAG  
GCCTGGCTGCTTGGACAGGAGCCGTACCTATCCAGCCGAGAGATAGGCCAGAGCCTGGACAGGTTGGAGA  
AGCTCATCAAGCGCCACGAGGCATTTGAAAAGTCTGCAGCAACCTGGGATGAGAGTTTCTTGCCCTGGA  
AAGGCTGACTACATTGGAGTTACTGGAAGTGCAGCAGCAGCAAGAGGAAGAGGAGAGGAAGAGGGCGCCG  
CCTTCTCCCGAGCCGAGCACGAAGGTTTTCAGAGGAAGCCGAGTCCAGCAGCAGTGGGATACTTCAAAGG  
GAGAACAAGTTTCCAAAACGGTTTGCAGCTGAACAGGGATCTCCACGGATGGCAGAAAACGGTGGACAC  
AAGCGAAATGGTCAACGGCGCTACAGAACAAGGACGAGCTCTAAAGAGTCCAGCCCCATCCCCTCCCCG  
ACCTCTGATCGTAAAGCCAAGACTGCCCTCCAGCCAGAGTGCCGCCACCTTACCAGCCAGAACCAGG  
AGACACCTTCGGCCAGATGGAAGGCTTCTCAATCGGAAACACGAGTGGGAGGCCACAATAAGAAAGC  
CTCAAGCAGGTCCTGGCACAATGTTTATTGTGTCATAAATAACCAAGAAATGGGTTTCTACAAAGATGCA  
AAGACTGCTGCTTCTGGAATCCCTACCACAGCGAGGTCCTGTGAGTTTGAAGAAGCTGTCTGCGAAG  
TGGCCCTTGATTACAAAAAGAAGAAACGATTCAAGCTAAGACTAAATGATGGCAATGAGTACCTCTT  
CCAAGCCAAAGACGATGAGGAAATGAACACATGGATCCAGGCTATCTCTTCCGCCATCTCTCTGATAAA  
CACGAGGTGTCTGCCAGCACCCAGAGCACGCCAGCATCCAGCCGCGCGCAGACCCTCCCCACCAGCGTCG  
TCACCATCACCAGCGAGTCCAGTCCCGCAAGCGGAAAAGGACAAGAGAAAGACAAAGAGAAGCGGTT  
CAGCCTTTTTGGCAAAAAGAAA

ACGCGTACGCGGCCGCTCGAGCAGAACTCATCTCAGAAGAGGATCTGGCAGCAAATGATATCCTGGATT  
ACAAGGATGACGACGATAAGGTTTAA

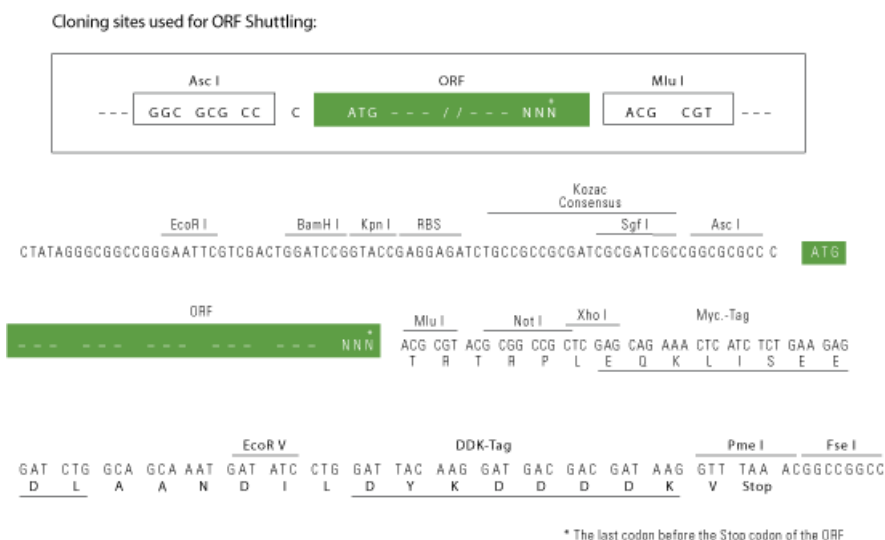
Protein Sequence: >RC212868 representing NM\_003128  
 Red=Cloning site Green=Tags(s)

MTTAVATDYDNIEIQQQYSDVNNRWDVDDWVNDENSSARLFERSRIKALADEREAVQKKFTTKWVNSHLAR  
 VSCRITDLYTDLRDGRMLIKLLEVL SGERLPKPTKGRMRIHCLENVDKALQFLKEQRVHLENMGSHDIVD  
 GNHRLTLGLIWTIILRFQIQDISVETEDNKEKKSADKALLWCQMKTAGYPNVNIHNFSTTSWRDGMAFNA  
 LIHKHRPDLIDFDKLLKSNAHYNLQNAFNLAEQHLGLTKLLDPEDISVDHPDEKSIITYVVTYYHYFSKM  
 KALAVEGKRIGKVLDNAIETEKMIKEYESLASDLEWIEQTIIILNRRKFANSLVGVQQQLQAFNTYRTV  
 EKPPKFTTEKGNLEVLFTIQSKMRANNQKYYMPREGKLSIDINKAWERLEKAEHERELALRNELIRQEKL  
 EQLARRFRKAAMRETWLSNQRLVSQDNFGFDLPAVEAATKKHEAIETDIAAYEERVQAVVAVARELEA  
 ENYHDIKRITARKDNVIRLWEYLLELLRARRQRLMNLGLQKIFQEMLYIMDWMDEMVLVLSQDYGKHL  
 LGVEDLLQKHTLVEADIGIQAERVGVNASAQKFATDGEQYKPCDPQVIRDRVAHMEFCYQELCQLAAER  
 RARLEESRRLWKFFWEMAEWIREKEKILSSDDYGDKLTSMRLLSKHRAFEDEMSGRSGHFQAIKE  
 GEDMIAEEHFGEKIRERIIYIREQWANLEQLSAIRKKRLEEASLLHQFQADADDIDAWMLDILKIVSSS  
 DVGHDEYSTQSLVKKHKDVAEEIANYRPTDLTHEQASALPQEAHESPDVVRGRLSGIEERYKEVAELTRL  
 RKQALQDTLALYKMFSEADACELWIDEKEQWLNMQIPEKLEDLEVIQHRFESLEPEMNNQASRVAVVNVQ  
 IARQLMHSQHPSEKEIKAQQDKLNTRWSQFRELVDKRDALLSALSIQNYHLECNETKSWIREKTKVIES  
 TQDLGNDLAGVMALQRKLTGMRDLVAIEAKLSDLQKEAEKLESEHPDQAQAILSRLAEISDVWEEMKTT  
 LKNREASLGEASKLQQFLRDLDDFQSWLSRTQTAIASEDMPNTL TEAEKLLTQHENIKNEIDNYEEDYQK  
 MRDMGEMVTQGGTDAQYMF LRQLQALDTGWNELHKMWRNQLLSQSHAYQQFLRDTKQAEAFNNQEQY  
 VLAHTEMPTTLEGAEAAIKKQEDFMTTMDANEKINAVVETGRRLVSDGNINSDRIQEKVSDIDRRHRKN  
 RETASELLMRLKDNRLQKFLQDCQELSLWINEKMLTAQDMSYDEARNLHSLKWLKHQAFMAELASNKEWL  
 DKIEKEGMQLISEKPETEAVVKEKLTGLHKMWEVLESTTQTKAQLFDANKAELFTQSCADLKWHLHGLE  
 SQIQSDDYGKHLTSVNILLKKQMLLENQMEVRKKEIEELQSQAQALSQEGKSTDEVDSKRLTVQTKFMEL  
 LEPLNERKHNLASKEIHQFNRDVEDEILWVGERMPLATSTDHGHNLQTVQLLIKKNQTLQKEIQGHQPR  
 IDDIFFERSQNIIVTSSSLSAEAIHQRLADLKQLWGLLIEETEKRRHRLLEEAHRAQQYYFDAEAEAWMSE  
 QELYMMSEKAKDEQSAVSMLKKHQILEQAVEDYAETVHQLSKTSRALVADSHPESERISMRQSKVDKLY  
 AGLKDLAEERRGKLDERHRLFQLNREVDLEQWIAEREVVAGSHELGDQYEHVMTLQERFREFARDTGNI  
 GQERVDTVNHLADELINSGHSDAATIAEWKDGLEAWADLLELIDTRTQILAASYELHKFYHDAKEIFGR  
 IQDKHKKLPEELGRDQNTVETLQRMHTTFEHDIQALGTQVRQLQEDAARLQAAYAGDKADDIQKRENEVL  
 EAWKSLLDACESRRVRLVDTGDKFRFFSMVRDLMLWMEDVIRQIEAQEKPRDVSSVELLMNNHQGIKAEI  
 DARNSFTTCIELGKSLARKHYASEEIKEKLLQLTEKRKEMIDKWEDRWELRLILEVHQFSRDASVAE  
 AWLLGQEPYLSREIGQSVDEVEKLIKREAFESAATWDERFSALERLTLELLEVRRQEQEEERKRRP  
 PSPEPSTKVSEEAESQQQWDTSKGEQVSNGLPAEQGSPRMAETVDTSEMVGATEQRTSSKESPISPSP  
 TSDRKAKTALPAQSAATLPARTQETPSAQMEGFLNRKHEWEAHNKKASSRSWHNVYCVINNQEMGFYKDA  
 KTAASGIPYHSEVPVSLKEAVCEVALDYKKKHFVFLRLNDGNEYLFQAKDDEEMNTWIAISSAISSDK  
 HEVSASTQSTPASSRAQLTPTSVVTITSESSPGKREKDKKDKERKRFSLFGKKK

TRTRPLEQKLISEEDLAANDILDYKDDDDKV

Chromatograms: [https://cdn.origene.com/chromatograms/mk8023\\_c02.zip](https://cdn.origene.com/chromatograms/mk8023_c02.zip)

Restriction Sites: AscI-MluI

**Cloning Scheme:**


**ACCN:** NM\_003128

**ORF Size:** 7092 bp

**OTI Disclaimer:** The molecular sequence of this clone aligns with the gene accession number as a point of reference only. However, individual transcript sequences of the same gene can differ through naturally occurring variations (e.g. polymorphisms), each with its own valid existence. This clone is substantially in agreement with the reference, but a complete review of all prevailing variants is recommended prior to use. [More info](#)

**OTI Annotation:** This clone was engineered to express the complete ORF with an expression tag. Expression varies depending on the nature of the gene.

**Components:** The ORF clone is ion-exchange column purified and shipped in a 2D barcoded Matrix tube containing 10ug of transfection-ready, dried plasmid DNA (reconstitute with 100 ul of water).

**Reconstitution Method:**

1. Centrifuge at 5,000xg for 5min.
2. Carefully open the tube and add 100ul of sterile water to dissolve the DNA.
3. Close the tube and incubate for 10 minutes at room temperature.
4. Briefly vortex the tube and then do a quick spin (less than 5000xg) to concentrate the liquid at the bottom.
5. Store the suspended plasmid at -20°C. The DNA is stable for at least one year from date of shipping when stored at -20°C.

**RefSeq:** [NM\\_003128.1](#), [NP\\_003119.1](#)

**RefSeq Size:** 7561 bp

**RefSeq ORF:** 7095 bp

**Locus ID:** 6711

**UniProt ID:** [Q01082](#)

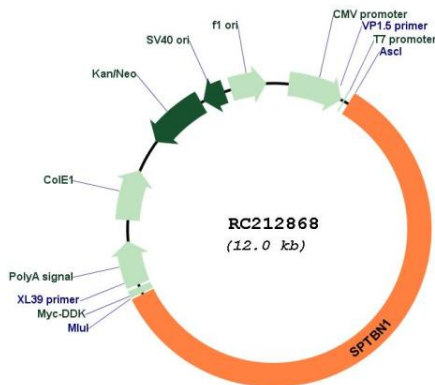
**Cytogenetics:** 2p16.2

**Domains:** CH, PH, spectrin

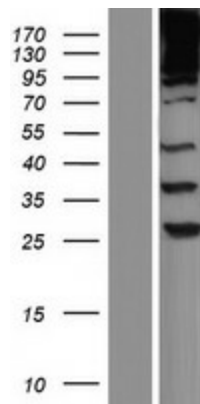
**MW:** 274.4 kDa

**Gene Summary:** Spectrin is an actin crosslinking and molecular scaffold protein that links the plasma membrane to the actin cytoskeleton, and functions in the determination of cell shape, arrangement of transmembrane proteins, and organization of organelles. It is composed of two antiparallel dimers of alpha- and beta- subunits. This gene is one member of a family of beta-spectrin genes. The encoded protein contains an N-terminal actin-binding domain, and 17 spectrin repeats which are involved in dimer formation. Multiple transcript variants encoding different isoforms have been found for this gene. [provided by RefSeq, Jul 2008]

**Product images:**



Circular map for RC212868



Western blot validation of overexpression lysate (Cat# [LY418883]) using anti-DDK antibody (Cat# [TA50011-100]). Left: Cell lysates from untransfected HEK293T cells; Right: Cell lysates from HEK293T cells transfected with RC212868 using transfection reagent MegaTran 2.0 (Cat# [TT210002]).