

Product datasheet for **RC212859**

Keratin 80 (KRT80) (NM_182507) Human Tagged ORF Clone

Product data:

| | |
|---------------------------|---|
| Product Type: | Expression Plasmids |
| Product Name: | Keratin 80 (KRT80) (NM_182507) Human Tagged ORF Clone |
| Tag: | Myc-DDK |
| Symbol: | Keratin 80 |
| Synonyms: | KB20 |
| Mammalian Cell Selection: | Neomycin |
| Vector: | pCMV6-Entry (PS100001) |
| E. coli Selection: | Kanamycin (25 ug/mL) |



[View online »](#)

ORF Nucleotide Sequence:

>RC212859 representing NM_182507
 Red=Cloning site Blue=ORF Green=Tags(s)

TTTTGTAATACGACTCACTATAGGGCGGCCGGGAATTCGTCGACTGGATCCGGTACCGAGGAGATCTGCC
 GCC**CGGATCGCC**

ATGGCCTGCCCTCTGCGTGGTTGGCTTCAGCAGCCTCAGCAGCTGTGAGGTGACCCCGTGGGCAGCC
 CCCGGCCTGGAACCTCAGGATGGGACAGCTGCAGGGCCCCGGGCGGGCTTCAGCTCCCGCAGCCTCAC
 AGGCTGCTGGTCCGGTGGCACTATCTCCAAGGTGACTGTGAACCCCGCCTGCTGGTGCCCTGGATGTC
 AAGTTGGACCCCGCTGTTTCAGCAGCTGAAGAACCAGGAGAAGGAGGAGATGAAGGCCCTCAATGATAAAT
 TTGCTCCCTAATTGGCAAGGTGCAAGCCCTGGAACAGCGCAACCAGCTGCTGGAGACACGCTGGAGCTT
 CCTGCAGGGCCAGGACTCAGCCATCTTCGACCTCGGGCATCTCTATGAGGAATATCAGGGCCGGCTGCAG
 GAGGAAGTGCCAAAGTGAAGCCAGGAGCGGGGCGAGCTGGAGGCCAACCTGCTGCAGGTGCTGGAGAAGG
 TTGAGGAGTTTGAATCAGGTATGAGGATGAGATCTCCAAGCGCACAGACATGGAGTTACCTTTGTTC
 GCTGAAGAAGGACCTGGATGCAGAGTGTCTTCATCGGACTGAACGGAAACCAAGTTAAAAAGCCTGGAG
 AGCTTCGTGGAGTTGATGAAAACCATCTATGAGCAGGAGCTGAAGGACCTGGCAGCACAGGTGAAGGATG
 TGTCGGTGACCGTCCGGCATGGACAGCCGCTGCCACATCGACCTGAGCGGCATCGTGGAGGAGGTGAAGGC
 CAGTATGACGCCGTCGCGGCTCGCAGCCTGGAGGAGGCCGAGGCATACTCTCGGAGCCAGCTGGAGGAG
 CAGGCCGCCCCTCGGCCGAGTATGGGAGCAGCCTCCAGAGCAGCCGAGCGAGATCGCGGATCTCAATG
 TGCGCATCCAGAAGTGCAGTCCAGATCTCTGTCAAGAGCCATTGCCTGAAACTGGAGGAGAACAT
 CAAGACAGCTGAGGAGCAGGGTGAAGTGGCCTTCCAGGATGCCAAGACCAAGCTGGCCCAGCTGGAGGCC
 GCCCTGCAGCAGGCCAAGCAGGACATGGCGCGGCGAGCTGCGCAAGTACCAGGAGCTGATGAACGTCAAGC
 TGGCCCTGGACATCGAGATCGCCACCTACAGGAAGCTGGTGGAGGGCGAGGAGGGCAGATGGACTCGCC
 CTCAGCCACTGTGGTCAAGCTGTGCAGTCCAGGTGCAAAACCGCTGCCTCCAGATCAGGCCTCTCCAAG
 GCCCCTCCCGAAAGAAGAGGGCAGCAAAGGCCCGTATCAAATCACCGAAATGTCAGAGAAGTACT
 TCTCGCAGGAGTCCGAGGTCTCAGAG

ACGCGTACGCGGCCGCTCGAGCAGAACTCATCTCAGAAGAGGATCTGGCAGCAAATGATATCCTGGATT
 ACAAGGATGACGACGATAAGGTTTAA

Protein Sequence:

>RC212859 representing NM_182507
 Red=Cloning site Green=Tags(s)

MACRSCVVGFFSSLSSCEVTPVGSPPRGTSWDSRAPGPGFSSRSLTGCWSAGTISKVTVNPGLLVPLDV
 KLDPAVQQLKNQEKEEMKALNDKFASLIGKVQALEQRNQLLETRWSFLQGQDSAIFDLGHL YEEYQGR LQ
 EELRKVSQERGLLEANLLQVLEKVEEFRIRYEDEISKRTDMEFTFVQLKKDLDAECLHRTELETKLKSLE
 SFVELMKTIIYEQLKDLAAQVKDVSVTVMDSRCHIDL SGIVEEVKAQYDAVAARSLEEA EAYSRSQLEE
 QAARSAEYGSLLQSSRSEIADLNVRIQKLRSQLSVKSHCLKLEENIKT AEEQGELAFQDAKTKLAQLEA
 ALQQAKQDMARQLRKYQELMNVKLALDIEIATYRKLVEGEEGRMDSPSATVVS AVQSRCKT AASRSGLSK
 APSRKKKGSKGPVIKITEMSEKYFSQESEVSE

TRTRPLEQKLISEEDLAANDILDYKDDDDKV

Chromatograms:

https://cdn.origene.com/chromatograms/mk8065_a01.zip

Restriction Sites:

Sgfl-Mlul

Cloning Scheme:


ACCN: NM_182507

ORF Size: 1356 bp

OTI Disclaimer: The molecular sequence of this clone aligns with the gene accession number as a point of reference only. However, individual transcript sequences of the same gene can differ through naturally occurring variations (e.g. polymorphisms), each with its own valid existence. This clone is substantially in agreement with the reference, but a complete review of all prevailing variants is recommended prior to use. [More info](#)

OTI Annotation: This clone was engineered to express the complete ORF with an expression tag. Expression varies depending on the nature of the gene.

Components: The ORF clone is ion-exchange column purified and shipped in a 2D barcoded Matrix tube containing 10ug of transfection-ready, dried plasmid DNA (reconstitute with 100 ul of water).

Reconstitution Method:

1. Centrifuge at 5,000xg for 5min.
2. Carefully open the tube and add 100ul of sterile water to dissolve the DNA.
3. Close the tube and incubate for 10 minutes at room temperature.
4. Briefly vortex the tube and then do a quick spin (less than 5000xg) to concentrate the liquid at the bottom.
5. Store the suspended plasmid at -20°C. The DNA is stable for at least one year from date of shipping when stored at -20°C.

Note: Plasmids are not sterile. For experiments where strict sterility is required, filtration with 0.22um filter is required.

RefSeq: [NM_182507.3](#)

RefSeq Size: 3411 bp

RefSeq ORF: 1359 bp

Locus ID: 144501

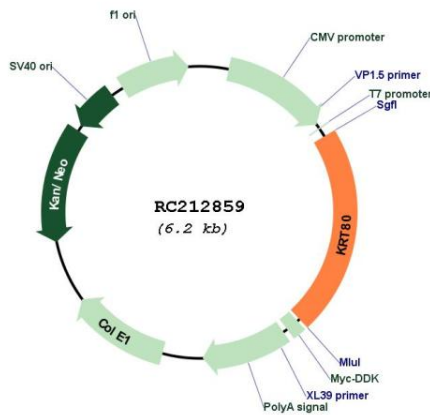
UniProt ID: [Q6KB66](#)

Cytogenetics: 12q13.13

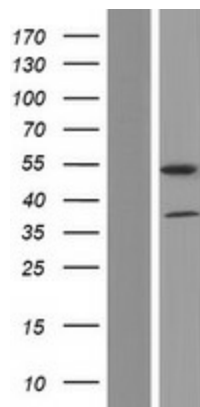
MW: 50.3 kDa

Gene Summary: Keratins are intermediate filament proteins responsible for the structural integrity of epithelial cells and are subdivided into epithelial keratins and hair keratins. This gene's expression profile shows that it encodes a type II epithelial keratin, although structurally the encoded protein is more like a type II hair keratin. This protein is involved in cell differentiation, localizing near desmosomal plaques in earlier stages of differentiation but then dispersing throughout the cytoplasm in terminally differentiating cells. The type II keratins are clustered in a region of chromosome 12q13. Two transcript variants encoding two different fully functional isoforms have been found for this gene.[provided by RefSeq, Oct 2010]

Product images:



Circular map for RC212859



Western blot validation of overexpression lysate (Cat# [LY405527]) using anti-DDK antibody (Cat# [TA50011-100]). Left: Cell lysates from untransfected HEK293T cells; Right: Cell lysates from HEK293T cells transfected with RC212859 using transfection reagent MegaTran 2.0 (Cat# [TT210002]).