

Product datasheet for **RC212855**

CYP26A1 (NM_057157) Human Tagged ORF Clone

Product data:

Product Type:	Expression Plasmids
Product Name:	CYP26A1 (NM_057157) Human Tagged ORF Clone
Tag:	Myc-DDK
Symbol:	CYP26A1
Synonyms:	CP26; CYP26; P450RAI; P450RAI1
Mammalian Cell Selection:	Neomycin
Vector:	pCMV6-Entry (PS100001)
E. coli Selection:	Kanamycin (25 ug/mL)



[View online »](#)

ORF Nucleotide Sequence:

>RC212855 representing NM_057157
 Red=Cloning site Blue=ORF Green=Tags(s)

TTTTGTAATACGACTCACTATAGGGCGGCCGGAATTCGTCGACTGGATCCGGTACCGAGGAGATCTGCC
 GCC**CGCATCGCC**

ATGAAGCGCAGGAAATACGGCTTCATCTACAAGACGCATCTGTTCCGGCGGCCACCGTACGGGTGATGG
 GCGCGACAATGTGCGGCGCATCTTGCTCGGAGACACCGCTGGTGTCCGCTCCACTGGCCAGCGTCGGT
 GCGCACCACTTCTGGGATCTGGCTGCCTCTTAACCTGCACGACTCCTCGACAAGCAGCGCAAGAAGGTG
 ATTATGCGGGCCTTCAGCCGCGAGGCACTCGAATGCTACGTGCCGGTGTACCGAGGAAGTGGGCAGCA
 GCCTGGAGCAGTGGCTGAGCTGCGGCGAGCGCGCCTCCTGGTCTACCCGAGGTGAAGCGCCTCATGTT
 CCGAATCGCCATGCGCATCTACTGGGCTGCGAACCCCACTGGCGGGCGACGGGGACTCCGAGCAGCAG
 CTTGTGGAGGCCCTCGAGGAAATGACCCGCAATCTTCTCGCTGCCATCGACGTGCCCTTCAGCGGGC
 TGTACCGGGGCATGAAGGCGGGAACCTATTACGCGCGCATCGAGCAGAACATTTCGCGCAAGATCTG
 CGGGCTGCGGGCATCCGAGGCGGGCCAGGGCTGCAAAGACGCGTGCAGCTGTTGATCGAGCACTCGTGG
 GAGAGGGGAGAGCGGCTGGACATGCAGGCACTAAAGCAATCTTCAACCGAACTCCTCTTTGGAGGACAG
 AAACCACGGCCAGTGCAGCCACATCTCTGATCACTTACCTGGGGCTCTACCCACATGTTCTCCAGAAAGT
 GCGAGAAGAGCTGAAGAGTAAGGGTTTACTTTGCAAGAGCAATCAAGACAACAAGTTGGACATGAAATT
 TTGGAACAACCTAAATACATCGGGTGTGTTATTAAGGAGACCCTTCGACTGAATCCCCAGTTCCAGGAG
 GGTTTCGGGTGCTCTGAAGACTTTTGAATTAATGGATACCAGATCCCAAGGGCTGGAATGTTATCTA
 CAGTATCTGTGATACTCATGATGTGGCAGAGATCTTACCAACAAGGAAGAATTTAATCTGACCGATT
 ATGCTGCCTCACCCAGAGGATGCATCCAGTTTCAGCTTATTCCATTTGGAGGAGCCTTAGGAGCTGTG
 TAGGCAAAGAATTTGAAAAATTTCTCAAAATATTTACAGTGGAGCTGGCCAGGCATTGTGACTGGCA
 GCTTCTAAATGGACCTCTACAATGAAAACCCAGTCCCACCGTGTATCCTGTGGACAATCTCCCTGCAAGA
 TTCACCCATTTCCATGGGAAATC

ACGCGTACGCGGCCGCTCGAGCAGAACTCATCTCAGAAGAGGATCTGGCAGCAATGATATCCTGGATT
 ACAAGGATGACGACGATAAGGTTTAA

Protein Sequence:

>RC212855 representing NM_057157
 Red=Cloning site Green=Tags(s)

MKRRKYGFYKTHLFGRPTVRVMGADNVRILLGEHRLVSVHWPASVRTILGSGCLSNLHDSSHKQRKKV
 IMRAFSREALCYVPVITEEVGSSLEQWLSCGERGLLVYPEVKRLMFRIAMRILLGCEPQLAGDGDSEQQ
 LVEAFEEMTRNLFSLPIDVPFSGLYRGMKARNLIHARIEQNIRAKICGLRASEAGQGCKDALQLLIEHSW
 ERGERLDMQALKQSSTELLFGGHETTASAATSLITYLGLYPHVLQKVREELKSKGLLCKSNQDNKLDMEI
 LEQLKYIGCVIKETLRLNPPVPGGFRVALKTFELNGYQIPKGWNVIYSICDTHDVAEIFTNKEEFNPDRF
 MLPHPEDASRFSPFPGGGLRSCVGFKEFAKILLKIFTVELARHCDWQLLNGPPTMKTSPTYVPVDNLPAR
 FTHFHGEI

TRTRPLEQKLISEEDLAANDILDYKDDDDKV

Chromatograms:

https://cdn.origene.com/chromatograms/mk8059_b12.zip

Restriction Sites:

Sgfl-Mlul

Cloning Scheme:


ACCN: NM_057157

ORF Size: 1284 bp

OTI Disclaimer: The molecular sequence of this clone aligns with the gene accession number as a point of reference only. However, individual transcript sequences of the same gene can differ through naturally occurring variations (e.g. polymorphisms), each with its own valid existence. This clone is substantially in agreement with the reference, but a complete review of all prevailing variants is recommended prior to use. [More info](#)

OTI Annotation: This clone was engineered to express the complete ORF with an expression tag. Expression varies depending on the nature of the gene.

Components: The ORF clone is ion-exchange column purified and shipped in a 2D barcoded Matrix tube containing 10ug of transfection-ready, dried plasmid DNA (reconstitute with 100 ul of water).

Reconstitution Method:

1. Centrifuge at 5,000xg for 5min.
2. Carefully open the tube and add 100ul of sterile water to dissolve the DNA.
3. Close the tube and incubate for 10 minutes at room temperature.
4. Briefly vortex the tube and then do a quick spin (less than 5000xg) to concentrate the liquid at the bottom.
5. Store the suspended plasmid at -20°C. The DNA is stable for at least one year from date of shipping when stored at -20°C.

RefSeq: [NM_057157.2](#), [NP_476498.1](#)

RefSeq Size: 2246 bp

RefSeq ORF: 1287 bp

Locus ID: 1592

UniProt ID: [O43174](#)

Cytogenetics: 10q23.33

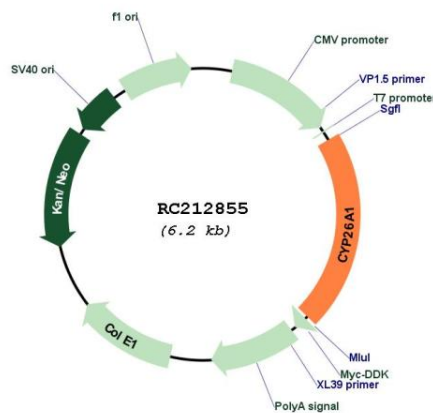
Protein Families: Druggable Genome, P450, Transmembrane

Protein Pathways: Retinol metabolism

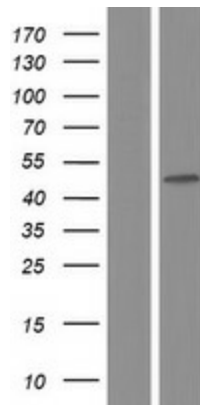
MW: 48.4 kDa

Gene Summary: This gene encodes a member of the cytochrome P450 superfamily of enzymes. The cytochrome P450 proteins are monooxygenases which catalyze many reactions involved in drug metabolism and synthesis of cholesterol, steroids and other lipids. This endoplasmic reticulum protein acts on retinoids, including all-trans-retinoic acid (RA), with both 4-hydroxylation and 18-hydroxylation activities. This enzyme regulates the cellular level of retinoic acid which is involved in regulation of gene expression in both embryonic and adult tissues. Two alternatively spliced transcript variants of this gene, which encode the distinct isoforms, have been reported. [provided by RefSeq, Jul 2008]

Product images:



Circular map for RC212855



Western blot validation of overexpression lysate (Cat# [LY409260]) using anti-DDK antibody (Cat# [TA50011-100]). Left: Cell lysates from untransfected HEK293T cells; Right: Cell lysates from HEK293T cells transfected with RC212855 using transfection reagent MegaTran 2.0 (Cat# [TT210002]).