

Product datasheet for RC212838

FRMPD2 (NM_001018071) Human Tagged ORF Clone

Product data:

Product Type:	Expression Plasmids
Product Name:	FRMPD2 (NM_001018071) Human Tagged ORF Clone
Tag:	Myc-DDK
Symbol:	FRMPD2
Synonyms:	PDZD5C; PDZK4; PDZK5C
Mammalian Cell Selection:	Neomycin
Vector:	pCMV6-Entry (PS100001)
E. coli Selection:	Kanamycin (25 ug/mL)
ORF Nucleotide Sequence:	>RC212838 representing NM_001018071 Red=Cloning site Blue=ORF Green=Tags(s)

TTTTGTAATACGACTCACTATAGGGCGGCCGGAATTCGTCGACTGGATCCGGTACCGAGGAGATCTGCC
GCC**CGATCGCC**

ATGCAGCCTTTAACGAAGGACGCAGGCATGAGCCTGTCCTCTGTGACGCTGGCCAGCGCCCTACAGGTCA
GGGGTGAAGCTCTGTCTGAGGAGGAAATCTGGTCCCTCTGTTCTGGCCGCTGAGCAGCTCCTGGAAGA
CCTCCGCAACGATTCTCGGACTATGTGGTTTGGCCCTGGTCAGCCCTGCTTTCTGCAGCTGGAAGCCTT
TCTTTCCAAGGCCGTGTTTCTCATATAGAGGCTGCTCCTTCAAGGCCCTGAAGTCTACAGGGACAGA
GTGAGGATGAGCAGCCTGATGCATCTCAGATGCATGTCTATTCTTAGGAATGACCTCTACTGGTCAGC
AGGGTTTCATGTTCCGCCACATCAGCCCTGCAGCTCTGGGAGCCCTGCACTCCATCCTGCTGACCATG
TGTGAAGACCAGCCTCACAGGCGGTGCAGTTCAGTTCGGTTCTGGAAGCTTGTGCGGTTTCATGAGAAAG
AAGTGTCTGTCTACCCAGCCCTGCTGGTCTCCACATCAGAAGGCTGGTTGGCTTGGTCTGGGTACCAT
TTCTGAGGTGGAGAAAAGAGTTGTGGAGGAAAGCTCCTCTGTGACGAGACAAGCTACCTGCTCAGG
AAGAGGCTGCGTGGGACAAGCAGCGAGAGCCAGCGGCACAGGCCCGGAGTGTCTGCATCCTTGCAGAG
TTTCAGAAAGAAGCAGGAGACCCAGAGCTCACCAGAGCCCCATTGGAGCACCTTGACACACAGTCACTG
CAGCCTCCTTGTAAACCGCGCTTCCAGGAGCAGATCCCAGGACCAGCAGGGCCGGAGGCTCAGC
TCTGGATCTGTGCACTCGGCAGCAGACAGCTCATGGCCAACAACCTTCTCAGAGGGGTTTCTGCAAA
GAAGGAGCAAGTTTTCCAGGCCAGAGTTTCATCCTGTTGGCTGGAGAGGCCCGATGACACTACATCTGCC
GGGATCGTTGTGACAAAAAAGGAAATCCTATTTGGCTCTCAGGGACCTCTGTGTGGTCTGCTGAAC
GGGCAGACCTGGAGGTAATGTGATGTTGAATCAACAGTGGGAGCTGCTTCAATGCCGTGACATCCT
TTGCCAACCTCGAGGAACTCACCTACTTTGGCTTGGCGTATATGAAAAGCAAAGATTCTTTTCTGGA
CAGTGAACCAGATTGTGCAAAATAGCTCCTGAAGGCTGGAGAGAGCAGCCTCAGAAGACCTCCATGAAT
ACCTTCACACTCTTCTGAGGATAAAGTCTTTGTGAGCCACTATGGGCTGCTCCAGCACAGCCTGACAA
GGCACCAGTTTACCTGCAGCTTCGAAAGATATCCTGGAGGAGAGGCTGTACTGCAATGAAGAGATACT
GCTGCAGCTGGGGTCTTGCCTTGACGGCTGAGTTTGGCAATTACCCTAAGGAGCAGGTGGAGAGTAAG



[View online »](#)

CCATACTTTCACGTTGAAGATTACATCCCAGCGAGTCTGATCGAGAGGATGACCGCTCTACGGTCCAGG
TTGAAGTCTCAGAGATGCACCGCTCAGCTCTGCACTGTGGGAGAGGATGCTGAGCTGAAGTTCTTGAG
GGTCACTCAGCAGCTCCCAGAATACGGTGTGCTGGTTCACCAAGTATTCTCAGAGAAGAGGAGGCCAGAA
GAGGAGATGGCCCTGGGATCTGTGCCAAGGTGTATAGTCTATGAAGTGAAAAACAACAGCAGAATTG
CAATGTTACGGTTTCAGTGGAGAGAAACCGGAAGATTCTACTTATCAAAAAAGTTACCACATACAAG
CAGTGTCACTGGGAAGAAGCACACATTTGTACAGATTCAGCCAAGACCAGTAAATACTTACTGGACCTC
TGCTCAGCCCAGCATGGGTTTAATGCACAGATGGGCTCTGGGCAGCCTTCCCATGTTTTATTGGACCAT
ATAAGTTTGTGCAAATGGCCAATTTGAGTCTGCACACCAGGCCGGTCTAAGCCTCTCATTGGATTCA
GAGATTGTCATGCTCAGAAAACGAGTTGTTGTATCCAGGCTTCAGGGTCTGCAGGAGGCTGCTGAGT
ACATCAATGGATAACTTCAACGTGGACGGCAGCAAGGAGGCTGGAGCAGAAGGCATCGGGCGCAGCCCT
GCACTGGCCGGGAGCAGCTGAAGAGTGCCTGTGTATCCAGAAGCCAATGACCTGGGACTCTCTCTGG
ACCACCTGTTAGAGCATGCATGCAGGCTCAAAGAATAATAGGAGGAAGAGCTTTATAGCTGAACCGGGC
CGAATAATGTACGTGTGACACTGAAACGTGACCCACATCGTGGTTTTGGTTTTGCATTAATGAGGGAG
AGTATTCAGGCCAAGCTGACCTGGCATTTTTTATCTTCTATTACCTGGAGGACCAGCAGAAAAAGC
AAAAACGATCAAACCAGGAGGGCAGATACTAGCCCTGAATCACATCAGTCTGGAGGGCTTACATTAAC
ATGGCTGTAGGATGATCCAGAATTCCTGACACATAGAATTAATTATTTCTCAGTCAAAGGTGTTG
GTGAAATAAACCAGATGAAGAAAAAATAGCACAGCCAATTCTGGGGTCTCCTCTACAGACATCCTGAG
CTTCGGGTACCAGGAAGTTTGTGTGCACACACAAGACCAGGACAGAAATACTGAAGAAGTAGACATG
GCTGGGGTGCAGAGCTTAGTGCCAGGCTGAGACATCAGCTTTCCTTTCTGCCGTTAAAGGGTGTGGTT
CTTCTTGTCTCCATCACCTCCAGAAATCAGTGTGGTGAATCTACTTTGTGGAAGTGGTTAAAGAAGA
TGGGACACTTGGATTGAGTAACTGGTGGCATTAAACACAGTGTCCATATGGTGGTATCTATGTGAAA
TCCATTGTTCTGGAGGACCAGCTGCCAAGGAAGGCAGATCTACAGGGTGACCGACTCCTGCAGGTGG
ATGGAGTATTCTGTGCCCTCACCCACAAGCAGGCTGTGCAGTGCCTGAAGGGTCTGGGCAGGTTGC
AAGACTGGTCTTAGAGAGAAGAGTCCCCAGGAGTACACAGCAGTGTCTTCTGCTAATGACAGCATGGGA
GATGAACGCACGGCTGTTTCTTGGTAACAGCCTTGCCTGGCAGGCTTCGAGCTGTGTCTCAGTGACAG
ATGGTCTAAGTTTGAAGTCAAATAAAAAAAGAAATGCCAATGGTTTGGGATTGAGTTTCTGTCAGATGGA
GAAAGAGAGCTGCAGCCATCTCAAAGTGTCTTGTGAGGATTAAGAGGCTCTTCCGGGGCAGCCAGCT
GAGGAGAATGGGGCCATTGCAGCTGGTGCATTATCCTGGCCGTGAATGGAAGTCCACGGAAGGCCTCA
TCTTCCAGGAGGTGCTGCATTTACTGAGAGGGGCCCCACAGGAAGTACGCTCCTCTTGGCCACCCCT
TCCAGGTGCGCTGCTGAGCTGGAGCAGGAATGGCAGACACCTGAACTCTCAGCTGACAAAGAATCACC
AGGGCAACATGTACTGACTCATGTACCAGCCCCATCCTGGATCAAGAGGACAGCTGGAGGGACAGTGCCT
CCCCAGATGCAGGGGAAGGCTGGGTCTCAGGCCAGAGTCTTCCAAAAGGCCATCAGAGAGGCACAATG
GGGCAAAAACAGAGAGAGACCTTGGGCCAGTTCCTTGACACATTCTCTGAGTCCCACCCTCATTATGC
AACTTACCAAGAAAGGGATGAATCAACATTGGCGACCTCTTGGAAAAGGATGTGAGGCAAAACTGCT
ATTCAGTTTGTGATATCATGAGACTTGAAGATATTCCTTCTCATCTCCTTAACCAGACTTTCGACAGA
TATTTTC

ACGCGTACGCGGCCGCTCGAGCAGAACTCATCTCAGAAGAGGATCTGGCAGCAATGATATCCTGGATT
ACAAGGATGACGACGATAAGGTTTAA

Protein Sequence: >RC212838 representing NM_001018071
Red=Cloning site Green=Tags(s)

```

MQPLTKDAGMSLSSVTLASALQVRGEALSEEEIWSLLFLAAEQLEDLRNDSSDYVVCPSALLSAAGSL
SFQGRVSHIEAAPFKAPPELLQGQSEDEQPDASQMHVYSLGMTLYWSAGFHVPPHQPLQLCEPLHSILLTM
CEDQPHRRCTLQSVLEACRVHEKEVSVYPAPAGLHIRRLVGLVLGTISEVEKRVVESSSVQQNRSYLLR
KRLRGTSSSPAQAPECLHPCRVSERSTETQSSPEPHWSTLTHSHCSLLVNRALPGADPQDQAGRRLS
SGSVHSAADSSWPTTSPQRGFLQRRSKFSRPEFILLAGEAPMTLHLPGSVVTKKGKSYLALRDLCVLLN
GQHLEVKCDVESTVGAVFNAVTSFANLEELTYFLAYMKSKEFFLDSETRLCKIAPEGWREQPKTSMN
TFTLFLRIKFFVSHYGLLQHSLTRHQFYLQLRKDILEERLYCNEEILLQLGVLALQAEFGNYPKEQVESK
PYFHVEDYIPASLIERMTALRVQVEVSEMHRLSSALWGEDAELKFLRVTQQLPEYGVLVHQVFSEKRRPE
EEMALGICAKGVIVYEVKNNSRIAMLRQWRETGKISTYQKFTITSSVTGKKHTFVTD SAKTSKYLLDL
CSAQHGFNAQMGSGQPSHVLFDHDKFVQMANLSPAHQARSKPLIWIQRLSCSENELFVSRLQGAAGLLS
TSMDNFNVDGSKEAGAEGIGRSPCTGREQLKSACVIQKPMWDSLGGPPVQSMHAGSKNNRRKSFIAEPG
REIVRVTLKRDPHRGFGFVINEGEYSGQADPGIFISSIIPGGPAEKAKTIKPGGQILALNHSLEGFTFN
MAVRMIQNSPDNIELIISQSKGVGGNNDPEEKNSTANSGVSTDILSFGYQGSLLSHTQDQDRNTEELDM
AGVQSLVPRLRHQLSFLPLKGAGSSCPPSPEISAGEIYFVELVKEDGTLGFSVTGGINTSVPYGGIYVK
SIVPGGPAAKEGQILQGDRLQVDGVILCGLTHKQAVQCLKGGQVAVLVERRVPRSTQQCPSANDSMG
DERTAVSLVTALPGRPSSCVSVTDGPKFEVKLKKNANGLGFSVQMEKESCSHLKSDLVRIKRLFPGQPA
EENGAIAGDIILAVNGRSTEGLIFQEVHLHLLRGAPQEVTL LLLCRPPPGALPELEQEWQTPELSADKEFT
RATCTDSTSPILDQEDSWRDSASP DAGEGLLRPESSQKAIREAQWQNRERPWASSLTHSPESHPLC
KLHQRDESTLATSLKDVQRNCYSVCDIMRLGRYSFSSPLTRLSTDF
    
```

TRTRPLEQKLISEEDLAANDILDYKDDDDKV

Chromatograms: https://cdn.origene.com/chromatograms/mk8023_c07.zip

Restriction Sites: SgfI-MluI

Cloning Scheme:

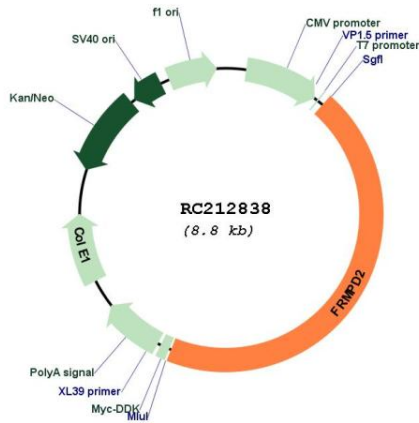


ACCN: NM_001018071

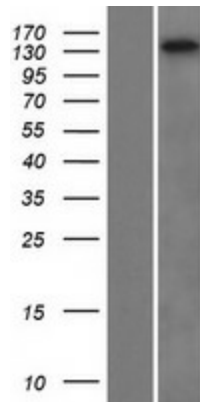
ORF Size: 3927 bp

OTI Disclaimer:	The molecular sequence of this clone aligns with the gene accession number as a point of reference only. However, individual transcript sequences of the same gene can differ through naturally occurring variations (e.g. polymorphisms), each with its own valid existence. This clone is substantially in agreement with the reference, but a complete review of all prevailing variants is recommended prior to use. More info
OTI Annotation:	This clone was engineered to express the complete ORF with an expression tag. Expression varies depending on the nature of the gene.
Components:	The ORF clone is ion-exchange column purified and shipped in a 2D barcoded Matrix tube containing 10ug of transfection-ready, dried plasmid DNA (reconstitute with 100 ul of water).
Reconstitution Method:	<ol style="list-style-type: none">1. Centrifuge at 5,000xg for 5min.2. Carefully open the tube and add 100ul of sterile water to dissolve the DNA.3. Close the tube and incubate for 10 minutes at room temperature.4. Briefly vortex the tube and then do a quick spin (less than 5000xg) to concentrate the liquid at the bottom.5. Store the suspended plasmid at -20°C. The DNA is stable for at least one year from date of shipping when stored at -20°C.
RefSeq:	NM_001018071.3 , NP_001018081.3
RefSeq Size:	4784 bp
RefSeq ORF:	3930 bp
Locus ID:	143162
UniProt ID:	Q68DX3
Cytogenetics:	10q11.22
MW:	144.1 kDa
Gene Summary:	This gene encodes a peripheral membrane protein and is located in a region of chromosome 10q that contains a segmental duplication. This copy of the gene is full-length and is in the telomeric duplicated region. Two other more centromerically proximal copies of the gene are partial and may represent pseudogenes. This full-length gene appears to function in the establishment and maintenance of cell polarization. The protein is recruited to cell-cell junctions in an E-cadherin-dependent manner, and is selectively localized at the basolateral membrane in polarized epithelial cells. Alternative splicing results in multiple transcript variants. [provided by RefSeq, Dec 2009]

Product images:



Circular map for RC212838



Western blot validation of overexpression lysate (Cat# [LY422722]) using anti-DDK antibody (Cat# [TA50011-100]). Left: Cell lysates from untransfected HEK293T cells; Right: Cell lysates from HEK293T cells transfected with RC212838 using transfection reagent MegaTran 2.0 (Cat# [TT210002]).