

Product datasheet for RC212833

TOGARAM2 (NM_199280) Human Tagged ORF Clone

Product data:

Product Type:	Expression Plasmids
Product Name:	TOGARAM2 (NM_199280) Human Tagged ORF Clone
Tag:	Myc-DDK
Symbol:	TOGARAM2
Synonyms:	FAM179A
Mammalian Cell Selection:	Neomycin
Vector:	pCMV6-Entry (PS100001)
E. coli Selection:	Kanamycin (25 ug/mL)
ORF Nucleotide Sequence:	>RC212833 representing NM_199280 Red=Cloning site Blue=ORF Green=Tags(s)

TTTTGTAATACGACTCACTATAGGGCGGCCGGAATTCGTCGACTGGATCCGGTACCGAGGAGATCTGCC
GCC**CGATCGCC**

ATGGGCACCCGTGACGATGTCCCGAAGCCAAGGTCTGGTCCCGTGGCCGTGTACTGCGGGAGCATCC
CTCGGACCAGTGTGGCCCCGGGTGCTCCCGCTGGAAGCATCAACTCCAGTCTGCCTCATGGAGAAGG
TTCTCTCCAGCCTGAGCCAAGAGCCCTGCTGAACAACGAGGAACCGTCACAGCTCCTGCGTGGACTCGGA
CAGCTGGGTGGCCTCAAGCTGGACACCCCTTCCAAGGGCTGGCAGGCAAGGAATGGTCAACCCAGGAAC
TCAGGGCCTTGTCTTTGGGGACCAGCCCTGGTCTCCTCCCTTCTCCGGAGTCAGAGGCCAACAGCGT
GGCCAGGGACACCATCCAGATTAAGGACAAGCTCAAGAAAAGGAGGCTCTCAGAGGGCTTGGCAGCGTCT
TCCCGAGCCTCTCTGGATCCAGGGGGAGGCCCCCAAGGAGTTCCTGCACAGCACCATCCCCGAGCCA
CCTCTCAGAGGCTGCTGAGGGTGGCCAGGCCGATGCCTCTCATCCAGAGCATCCCTACCACCCCTGAGGC
CAGCGGAGTCAAAGAGAAGGGCCTGGACCTACCGGGGAGCATTCCGGGTCTCACGAGTTGAGACCCGGT
GCTCAGGAGGCGCAGATCTCTGGCAATACCTGCACTGCAATGATGAGAAGATGCAGAAGTCCCTGGGCG
CCATCGTGATCCCACCCATCCAAAGGCCAGGACGGTTGACGCGACCCCTCCCGTGTGCCTGGCTCCCT
TCCCAGCCCGTTACCTCCAGGCCAGGGAGTCTCACAGGCCTGAGGGCCCCACGCACGCGATTGGCTCGG
GGGAGTGGGCCTCGGAGAAGACCCCTGCATCTCTGGAGCCAAAACCTTTGGCCCTACCCATCAGAGACA
GGCCTGCCGCTGCCAAGAAGCCTGCCCTGCCTTTTCTCAGTCTGCTCCACGCTGACAGCCTTCTCCTT
TGA CTGTGCCAGAGAAGCCTGCCCTCCGCTGAAAGAAGAGGACCAGAAGGAGATCGGCACCAAGATCCAA
GTCACCATCTCCAAGTCTGCCCGGAGAAGATGCAGCTGAAGCAGATGAAGGAGATGGAGCTGCTTCGGA
GGCTGGAGGAGCCAGGACAGGGCAGGAGCTCACTTCCAGTGCCTGGGCTCCAGAGAGCCTTCATGAA
GGAAGGCCTCCTCCCTCCGGGCAGCGGGACACTGTCTGTGCCACTAGGCTGAGCGGCCATGCAGA
AACGACGTCAGCATCATCTGAGGAAGTGGCCAGCCGGGCTCCCTGCCAGCATCCCCATCAGCCGGC
AGGAGCCCGCTTTCGCCGCCACGCTCAGCTAACTATTACCTGCGGTGCTCACGTTGGGTCTCCTGA
ATGGGAAGAAGAGGAGGAGATGGATCTTAGAGCCTGTAAGGAGTTGAGGCCTTTCTCGAACCCGGAGCTG



[View online >](#)

```
GGGCTGAGGGATGCACTCCAGTGCCTCAACAGCAGTGACTGGCAGATGAAGGAGAAGGGTCTGGTGAACA
TCCAGCGCTTGGCAGCCTGTCACTCAGAGGTCTCACCGGGAAGCTGCACGACGTGTGCTTGGTGGTGAC
TGGGGAGGTACCAACCTGCGGTCCAAGGTGTCTCACCTGGCCATCAGCACCTTGGGAGACCTCTCCAG
GCCTTGAAGAAGAATATGGACCAGGAGGCCGAGGAGATCGCCCGTGTGCTGCAGAAGATGGCGGACA
CCAACGAGTTCATCCAGAGAGCAGCCGGCCAGTCTCTGAGGGCTATGGTGGAGAATGTGACCCTTGCCCG
CTCCCTGGTGGTCTCACCTCGGCGGGTGTCTACCACCGGAACCCCTTGATCCGGAATACGCGGGCTGAG
CACCTCTCAGCTGTGCTGGAGCAGATCGCGCTGAGAAGCTTCTCTCGGGCACCAGAGACAGCACAGACA
TGTTGGTGACAACCTGGTGGGCTGGCAGGACTCCAACCAGGACACCAGATTTTATGGCCGGAAGAT
GGTGAATATCTTGATGGCGAACCTAAGTTTGTGATTTCTGAAGCAATCTCTCCCATCTTACGACTTG
CAGAAGGTGATGGCGCCATTAACAGCAGGGAATAGAAGATAATGATGAACTTCCCTCTGCCAAAGGCC
GCAAGGTGTTGAGGAGTCTGGTGGTGTGTGAGAACGGGCTGCCCATCAAGGAGGGGCTCAGCTGCAATGG
CCCAAGGTGTTGGGGCTGCGCTCCACTGCAGGGCCGCGGGGAGATGGTGGAGCAGCTACGGGAGCTG
ACACGGCTGCTGGAGGCCAAGGACTTCCGGTCCCGGATGGAAGGCGTGGGCAGCTCCTGGAGCTGCA
AGGCCAAGACGGAGCTTGTCACTGCCACCTGGTCCAGGTCTTTGATGCTTTCACCCAAGGCTTCAGGA
TTCCAACAAGAAAGTGAACCAGTGGGCGCTGGAGTCTTCCGCAAGATGATCCCCCTCTCAGAGAGAGC
TTACACCCATGCTGCTCTCCATCATCACTGTTGCAGACAACCTCAACTCCAAGAACTCAGGGATTT
ACGCTGCTGCCGTGGCTGTGCTGGATGCGATGGTTGAGAGCCTGGACAACCTTTGCCTTCTACCAGCGCT
TGCTGGGCGAGTGCCTTCTGAGTGGCGGTGCGGTGCTGGATGTACAGATCGCCTGGCAGTGTGGTG
GCCTCAGTTTACCCCGGAAGCCTCAAGCTGTAGAGCGGCATGCTCTCCCATCTCTGGCACTTCTGTA
ACACCGCCACCAGGAATGGCACCTGCCTGGACCCAGCGGGAACATCCGCGGGGTGGTGTCCCGGCTGC
CAGGAGCTCCAGGAGCAGATGGGCTCCCGCTGCTGGACTTTGCCGCCAGCCAGCCAAAGCACGTCCTC
AAGACGCTCCAGGAAGTCTTAGACTCAGAGTCTTGGGAGGCAGCCGAAGGCCACTGACAGAGGGGTGG
CCCTGACAGCAAGACAACCTGGCAGCTCATACCCTTTTCAGCTGGAT
```

ACGCGTACGCGGCGCTCGAGCAGAACTCATCTCAGAAGAGGATCTGGCAGCAAATGATATCCTGGATT
ACAAGGATGACGACGATAAGGTTTAA

Protein Sequence:

>RC212833 representing NM_199280
Red=Cloning site Green=Tags(s)

```
MGRTRDDVPEAKVLPVAVYCGSIPRTSAGPRVLPVPGSINSSLPHGEGSLQPEPRALLNNEEPSQLLRGLG
QLGGLKLDTPSKGWQARNHPRNLRALSLGDQPLVLLPSPSEANSVARDTIQIKDKLKKRRLSEGLAAS
SRASLDPGGGPQGVPLHSTIPRATSQRLLRVPRMPLIQSIPTTPEASGVKEKGLDLPGSIPGPHLRPG
AQEAQISWQYLHCNDEKMQSLGAIVIPPIPKARTVAATPSRVPGLSPLPPGGVLTGLRAPRTRLAR
GSGPREKTPASLEPKPLASPIRDRPAAAKKALPFSQSAPTLTAFSFDCAAREACPLKEEDQKEIGTKIQ
VTISKSAREKMLKQMKEMELLRRLEEPRTGQELTSQCLGSQRAFMEKGLLPLRGSGLTLPVPTLSPGCR
NDVSIILRKWASRASLPSIPISRQEPFRFARHASANSLPAVLTGSPWEWEEEEEEMDLRACKELRPFSPNEL
GLRDALQCLNSSDWQMKELVSIQRLAACHSEVLTGKLHDVCLVVTGEVTNLRKVSHLAISTLGDLFQ
ALKKNMDQEAEEIARCLLQKMAADTNEFIQRAAGQSLRAMVENVTLARSLVVLTSAGVYHRNPLIRKYAAE
HL SAVLEQIGAELKLLSGTRDSTMLVHNLVRLAQDSNQDTRFYGRKMVNILMANTKFDALFKQSLPSYDL
QKVMAAIKQQGIEDNDELPSAKGRKVLRSVVENCNLPKEGLSCNGPRLVGLRSTLQGRGEMVEQLREL
TRLLEAKDFRSRMEGVGQLELCKAKTELVT AHLVQVFDFTPRLQDSNKKVNWALESF AKMIPLLRRES
LHPMLLSIIITVADNLNSKNSGIYAAAVAVLDAMVESLDNLCLLPALAGRVRFVLSGRAVLDVTDRLAVLV
ASVYPRKPQAVRHVLPILWHFLNATRNGLTPGSPGNIRGVVCRLSRSLQEHMGSRLLDFAASQPKHVL
KTLQELLDSESLGGRKATDRGVAPDSKTTGSSYPFQLD
```

TRTRPLEQKLISEEDLAANDILDYKDDDDKV

Chromatograms:

https://cdn.origene.com/chromatograms/mk8022_h09.zip

Restriction Sites:

Sgfl-Mlul

Cloning Scheme:


ACCN: NM_199280

ORF Size: 3057 bp

OTI Disclaimer: The molecular sequence of this clone aligns with the gene accession number as a point of reference only. However, individual transcript sequences of the same gene can differ through naturally occurring variations (e.g. polymorphisms), each with its own valid existence. This clone is substantially in agreement with the reference, but a complete review of all prevailing variants is recommended prior to use. [More info](#)

OTI Annotation: This clone was engineered to express the complete ORF with an expression tag. Expression varies depending on the nature of the gene.

Components: The ORF clone is ion-exchange column purified and shipped in a 2D barcoded Matrix tube containing 10ug of transfection-ready, dried plasmid DNA (reconstitute with 100 ul of water).

- Reconstitution Method:**
1. Centrifuge at 5,000xg for 5min.
 2. Carefully open the tube and add 100ul of sterile water to dissolve the DNA.
 3. Close the tube and incubate for 10 minutes at room temperature.
 4. Briefly vortex the tube and then do a quick spin (less than 5000xg) to concentrate the liquid at the bottom.
 5. Store the suspended plasmid at -20°C. The DNA is stable for at least one year from date of shipping when stored at -20°C.

RefSeq: [NM_199280.4](#)

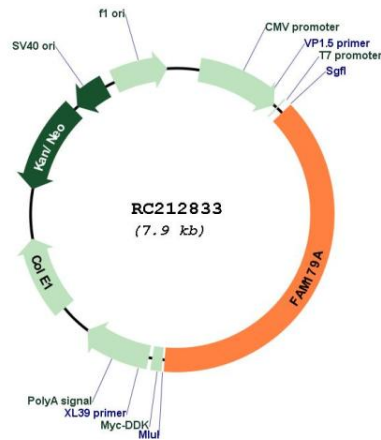
RefSeq Size: 3564 bp

RefSeq ORF: 3060 bp

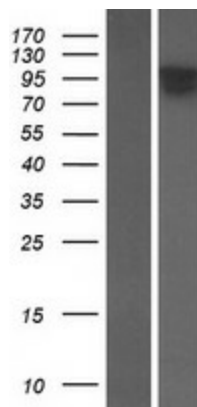
Locus ID: 165186

UniProt ID: Q6ZUX3
 Cytogenetics: 2p23.2
 MW: 111 kDa

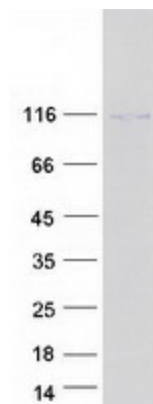
Product images:



Circular map for RC212833



Western blot validation of overexpression lysate (Cat# [LY404603]) using anti-DDK antibody (Cat# [TA50011-100]). Left: Cell lysates from untransfected HEK293T cells; Right: Cell lysates from HEK293T cells transfected with RC212833 using transfection reagent MegaTran 2.0 (Cat# [TT210002]).



Coomassie blue staining of purified TOGARAM2 protein (Cat# [TP312833]). The protein was produced from HEK293T cells transfected with TOGARAM2 cDNA clone (Cat# RC212833) using MegaTran 2.0 (Cat# [TT210002]).