

Product datasheet for **RC212830**

MEF2A (NM_005587) Human Tagged ORF Clone

Product data:

| | |
|---------------------------|--|
| Product Type: | Expression Plasmids |
| Product Name: | MEF2A (NM_005587) Human Tagged ORF Clone |
| Tag: | Myc-DDK |
| Symbol: | MEF2A |
| Synonyms: | ADCAD1; mef2; RSRFC4; RSRFC9 |
| Mammalian Cell Selection: | Neomycin |
| Vector: | pCMV6-Entry (PS100001) |
| E. coli Selection: | Kanamycin (25 ug/mL) |



[View online »](#)

ORF Nucleotide Sequence:

>RC212830 representing NM_005587
 Red=Cloning site Blue=ORF Green=Tags(s)

TTTTGTAATACGACTCACTATAGGGCGGCCGGGAATTCGTCGACTGGATCCGGTACCGAGGAGATCTGCC
 GCC**CGGATCGCC**

ATGGGGCGGAAGAAAATACAAATCACACGCATAATGGATGAAAGGAACCGACAGGTCACTTTTACAAGA
 GAAAGTTTGGATTAATGAAGAAAAGCCTATGAACCTTAGTGTGCTCTGTGACTGTGAAATAGCACTCATCAT
 TTTCAACAGCTCTAACAACTGTTTCAATATGCTAGCACTGATATGGACAAAGTTCTTCTCAAGTATACA
 GAATATAATGAACCTCATGAAAGCAGAACCACTCGGATATTGTTGAGGCTCTGAACAAGAAGGAACACA
 GAGGGTGCAGACCCAGACCCTGATACTTCATATGTGCTAACTCCACATACAGAAGAAAATAAAAA
 AATTAATGAGGAATTTGATAATATGATGCGGAATCATAAAATCGCACCTGGTCTGCCACCTCAGAACTTT
 TCAATGTCTGTCACAGTCCAGTGACCAGCCCCAATGCTTTGCTCTACACTAACCCAGGGAGTTCAGTGG
 TGTCCCACATCTTTGGCAGCCAGCTCAACGTTAACAGATCAAGCATGCTCTCTCCACCTCAAACCACATT
 ACATAGAAATGTGTCTCCTGGAGCTCCTCAGAGACCACCAAGTACTGGCAATGCAGTGGGATGTTGAGC
 ACTACAGACCTCACAGTGCCAAATGGAGCTGGAAGCAGTCCAGTGGGGAATGGATTTGTAAACTCAAGAG
 CTTCTCCAAATTTGATTGGAGCTACTGGTGCAAAATAGCTTAGGCAAAGTCATGCCTACAAAGTCTCCCCC
 TCCACCAGGTGGTGGTAATCTTGAATGAACAGTAGGAAACCAGATCTTCGAGTTGTCATCCCCCTTCA
 AGCAAGGGCATGATGCCTCCACTAAATACCCAAAGGATCAGTAGTTCTCAAGCCACTCAACCTCTTGCTA
 CCCAGTCGTGTCTGTGACAACCCCAAGCTTGCCTCCGCAAGGACTTGTGTACTCAGCAATGCCGACTGC
 CTACAACACTGATTATCACTGACCAGCGCTGACCTGTGACCCCTCAAGGCTTCAACTCGCCAGGAATG
 CTGTGCTGGACAGGTGTGGCCTGGCAGCAGCACCACTAGGACAAGCAGCCCTCAGCTCTCTTGTTG
 CTGGAGGCGAGTTATCTCAGGGTTCCAATTTATCCATTAATACCAACCAAAACATCAGCATCAAGTCCGA
 ACCGATTTACCTCCTCGGGATCGTATGACCCCATCGGGCTTCCAGCAGCAGCAGCAGCAGCAGCAGCAG
 CAGCAGCCCGCCACCACCCGACGCCCCAGCCACAACCCCGCAGCCCCAGCCCGACAGAAATGGGGC
 GCTCCCCTGTGGACAGTCTGAGCAGCTCTAGTAGCTCCTATGATGGCAGTGATCGGGAGGATCCACGGGG
 CGACTTCCATTCTCAATTGTGCTTGGCCGACCCCAACACTGAGGACAGAGAAAGCCCTTCTGTAAG
 CGAATGAGGATGGACGCGTGGGTGACC

AG**CGGACCG**ACGCGTACGCGGCCGCTCGAGCAGAACTCATCTCAGAAGAGGATCTGGCAGCAAATGATATCC
 TGGATTACAAGGATGACGACGATAAGGTTTAA

Protein Sequence:

>RC212830 representing NM_005587
 Red=Cloning site Green=Tags(s)

MGRKKIQITRIMDERNRQVFTTKRKFGLMKKAYELSVLCDCEIALIIFNSSNKLQYASTDMDKVLLKYT
 EYNPHESTRNSDIVEALNKKEHRGCDSPDPDTSYVLTPHTEEKYKKINEEFDNMMRNHKIAPGLPPQNF
 SMSVTVPVTPSPNALSYTNPGSSLVSPSLAASSTLTDSSMLSPPTLHRNVSPGAPQRPSTGNAGGMLS
 TTDLTVPNGAGSSPVNGFVNSRASPNIIGATGANSLGKVMPTKSPPPPGGNLGMNSRKPDLRVVIPP
 SKGMPPPLNTQRISSSQATQPLATPVVSVTTPSLPPQGLVYSAMPTAYNTDYSLSADLSALQGFNSPGM
 LSLGQVSAWQQHHLGQAALSSLVAGGQLSQGSNLSINTNQNISIKSEPI SPPDRMTPSGFQQQQQQQQ
 QQPPPPPPQPQPQPQPRQEMGRSPVDSLSSSSSYDGSREDPRGDFHSPIVLGRPPNTEDRESPSVK
 RMRMDAWVT

SGPTRRRLEQKLISEEDLAANDILDYKDDDDK**V**

Chromatograms:

https://cdn.origene.com/chromatograms/mk6182_a07.zip

Restriction Sites:

Sgfl-RsrII

Cloning Scheme:


ACCN: NM_005587

ORF Size: 1497 bp

OTI Disclaimer: Due to the inherent nature of this plasmid, standard methods to replicate additional amounts of DNA in E. coli are highly likely to result in mutations and/or rearrangements. Therefore, OriGene does not guarantee the capability to replicate this plasmid DNA. Additional amounts of DNA can be purchased from OriGene with batch-specific, full-sequence verification at a reduced cost. Please contact our customer care team at custsupport@origene.com or by calling 301.340.3188 option 3 for pricing and delivery.

The molecular sequence of this clone aligns with the gene accession number as a point of reference only. However, individual transcript sequences of the same gene can differ through naturally occurring variations (e.g. polymorphisms), each with its own valid existence. This clone is substantially in agreement with the reference, but a complete review of all prevailing variants is recommended prior to use. [More info](#)

OTI Annotation: This clone was engineered to express the complete ORF with an expression tag. Expression varies depending on the nature of the gene.

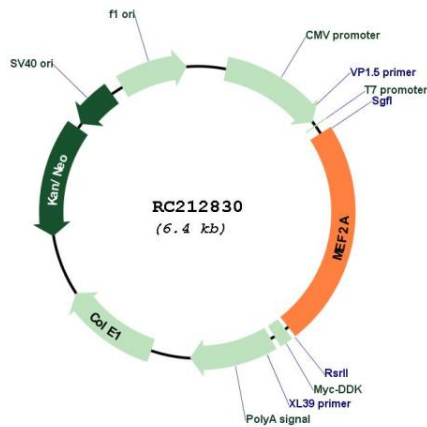
Components: The ORF clone is ion-exchange column purified and shipped in a 2D barcoded Matrix tube containing 10ug of transfection-ready, dried plasmid DNA (reconstitute with 100 ul of water).

- Reconstitution Method:**
1. Centrifuge at 5,000xg for 5min.
 2. Carefully open the tube and add 100ul of sterile water to dissolve the DNA.
 3. Close the tube and incubate for 10 minutes at room temperature.
 4. Briefly vortex the tube and then do a quick spin (less than 5000xg) to concentrate the liquid at the bottom.
 5. Store the suspended plasmid at -20°C. The DNA is stable for at least one year from date of shipping when stored at -20°C.

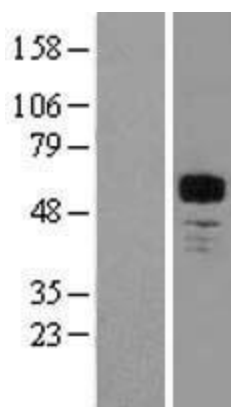
RefSeq: [NM_005587.2, NP_005578.2](#)
RefSeq Size: 2975 bp
RefSeq ORF: 1500 bp
Locus ID: 4205
UniProt ID: [Q02078](#)
Cytogenetics: 15q26.3
Domains: MADS
Protein Families: Transcription Factors
MW: 53.7 kDa

Gene Summary: The protein encoded by this gene is a DNA-binding transcription factor that activates many muscle-specific, growth factor-induced, and stress-induced genes. The encoded protein can act as a homodimer or as a heterodimer and is involved in several cellular processes, including muscle development, neuronal differentiation, cell growth control, and apoptosis. Defects in this gene could be a cause of autosomal dominant coronary artery disease 1 with myocardial infarction (ADCAD1). Several transcript variants encoding different isoforms have been found for this gene.[provided by RefSeq, Jan 2010]

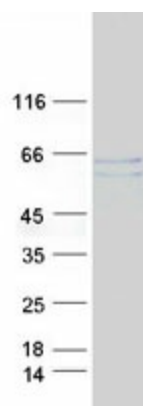
Product images:



Circular map for RC212830



Western blot validation of overexpression lysate (Cat# [LY401713]) using anti-DDK antibody (Cat# [TA50011-100]). Left: Cell lysates from untransfected HEK293T cells; Right: Cell lysates from HEK293T cells transfected with RC212830 using transfection reagent MegaTran 2.0 (Cat# [TT210002]).



Coomassie blue staining of purified MEF2A protein (Cat# [TP312830]). The protein was produced from HEK293T cells transfected with MEF2A cDNA clone (Cat# RC212830) using MegaTran 2.0 (Cat# [TT210002]).