

## Product datasheet for **RC212827**

### **NHEDC1 (SLC9B1) (NM\_001100874) Human Tagged ORF Clone**

#### **Product data:**

Product Type:	Expression Plasmids
Product Name:	NHEDC1 (SLC9B1) (NM_001100874) Human Tagged ORF Clone
Tag:	Myc-DDK
Symbol:	NHEDC1
Synonyms:	NHA1; NHEDC1
Mammalian Cell Selection:	Neomycin
Vector:	pCMV6-Entry (PS100001)
E. coli Selection:	Kanamycin (25 ug/mL)



[View online »](#)

**ORF Nucleotide Sequence:**

>RC212827 representing NM\_001100874  
 Red=Cloning site Blue=ORF Green=Tags(s)

TTTTGTAATACGACTCACTATAGGGCGGCCGGAATTCGTCGACTGGATCCGGTACCGAGGAGATCTGCC  
 GCC**CGGATCGCC**

ATGCATACCACAGAATCAAAAAATGAACATTTGGAGGATGAAAACCTCCAACATCTACAACCTCCTCAGA  
 GTCTCATTGATCCTAATAATACTGCACATGAAGAACTAAAACCTGCTTATCAGATACAGAAGAAATAAA  
 ACCACAGACAAAAAGGAGACATACATTTCTTGTCTCTAAGAGGAGATTGAATGTAATTATTACAAAT  
 GGAGTTATACTGTTGTGATATGGTGTATGACCTGGTCAATCTTAGGCTCTGAAGCTCTCCCTGGTGAA  
 ATTTATTTGGGTTGTTTATTATTTTATAGTGCCATTATTGGGGGAAAAATTTACAACCTATTAGAAT  
 ACCTTTAGTGCCTCCACTCCACCTCTTCTGGGATGTTACTGGCTGGTTTTACGATTAGGAATGTTCCA  
 TTCATCAATGAACATGCCATGTTCTAACACATGGTCTTCAATTTAAGAAGCATTGCCCTTACCATTA  
 TTCTAATAAGAGCTGGGCTTGGACTCGATCCACAGGCTTTGAGGCATTTGAAGGTCGTTTGTTCAGATT  
 GGCTGTAGTCCATGCCCTTATGGAGGCAAGTGCAGCTGCTGTTTTTCACTTCATTATGAAATTTCCC  
 TGGCAATGGGCATTTCTATTAGGTTTTGTTCTAGGTGCTGCTCTCTCTGCTGTTGTTGTCCTTACATGA  
 TGGTGCTGCAAGAAAATGGATATGGTGTGAGGAGGCATTCCAACCTTATTAATGGCTGCTAGCAGTAT  
 GGATGACATTCTGGCTATCACTGGATCAATACATGCTTGAGCATAGTCTTTTCCCTCAGGTGGTATACTT  
 AATAACGCCATAGCCTCTATAAGGAACGTATGTATTAGTCTGCTGGCAGGAATTGTTTTGGGATTTTTG  
 TTCGATATTTCCAAGTGAAGACCAGAAAAAATTACATTGAAGAGAGGATTCTTGTGTTTACTATGTG  
 TGTTTCTGCCGCTTAGGCAGCCAACGTATTGGTTTACATGGATCTGGAGGATTATGCACACTAGTGTG  
 AGTTTTCTGCAGGGACAAAATGGTCCCAAGAAAAGATGAAAGTCCAAAAGATTATTACGACTGTATGGG  
 ATATTTTTCAACCACTTCTTTTTGTTTGTGGAGCAGAAGTATCTGTTTCATCGCTTGAATCAAATAT  
 TGTGGCATATCTGTTGCCACTTAAGTTTGGCATTATGTGTTTGAATTTAACCACATATCTATTGATG  
 TGCTTTGCTGTTTTAGTTTTAAGGAGAAAATATTTATTGCTTTAGCATGGATGCCCAAAGCTACAGTAC  
 AGATTAATCAAGCTATCCTTCTGTTGTTTCTTCTCGGGAGGAATGGACGAACTGCAAGGTAGCCAAGAA  
 GTGCGAGTACACCAAGGAAAGGCAA

**ACGCGT**ACGCGGCCGCTCGAGCAGAAAACATCTCAGAAGAGGATCTGGCAGCAAATGATATCCTGGATT  
 ACAAGGATGACGACGATAAGGTTTAA

**Protein Sequence:**

>RC212827 representing NM\_001100874  
 Red=Cloning site Green=Tags(s)

MHTTESKNEHLEDENFQTSTTPQSLIDPNNTAHEETKTVLSDTEEIKPQTKKETYISCIPLRGVLNVIITN  
 GVILFVIWCMTWSILGSEALPGGNLFGLFIIFYSAIIGGKILQLIRIPLVPPLPPLGMLLAGFTIRNVP  
 FINEHVHPNPTWSSILRSIALTIILIRAGLGLDPQALRHLKVVCFRLAVGPCLMEASAAAVFSHFIMKFP  
 WQWAFLLGFVLGAVSPAVVVPYMMVLQENGYGVEEGIPTLLMAASSMDDILAITGFNTCLSIVFSSGGIL  
 NNAIASIRNVCISLLAGIVLGFVRYFPSEDQKLLTKRGFLVLTMCVSAVLGSQRIGLHGSGGLCTLVL  
 SFIAGTKWSQEKMKVQKIITTVWDFQPLLFLVGAEVSVSSLESNIIVGISVATLSLALCVRILTTYLLM  
 CFAGFSFKEKIFIALAWMPKATVQINQAILLFLLLREEWTNCKVAKKCEYTKERQ

**TR**TRPLEQKLISEEDLAANDILDYKDDDDKV

**Chromatograms:**

[https://cdn.origene.com/chromatograms/ja1140\\_e11.zip](https://cdn.origene.com/chromatograms/ja1140_e11.zip)

**Restriction Sites:**

Sgfl-Mlul

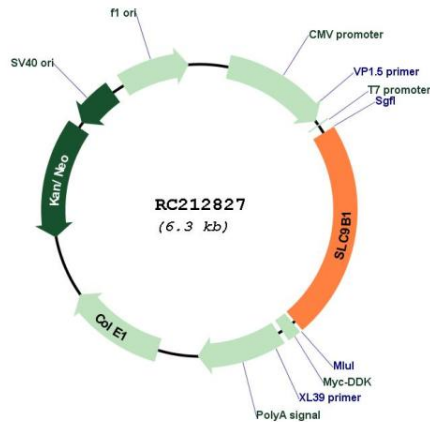


**Protein Families:** Druggable Genome, Transmembrane

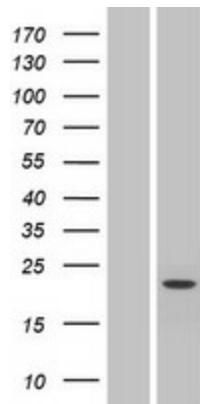
**MW:** 52 kDa

**Gene Summary:** The protein encoded by this gene is a sodium/hydrogen exchanger and transmembrane protein. Highly conserved orthologs of this gene have been found in other mammalian species. The expression of this gene may be limited to testis. Multiple transcript variants encoding different isoforms have been found for this gene. [provided by RefSeq, Jul 2010]

**Product images:**



Circular map for RC212827



Western blot validation of overexpression lysate (Cat# [LY420298]) using anti-DDK antibody (Cat# [TA50011-100]). Left: Cell lysates from untransfected HEK293T cells; Right: Cell lysates from HEK293T cells transfected with RC212827 using transfection reagent MegaTran 2.0 (Cat# [TT210002]).