

Product datasheet for RC212824

LGICZ1 (ZACN) (NM_180990) Human Tagged ORF Clone

Product data:

Product Type:	Expression Plasmids
Product Name:	LGICZ1 (ZACN) (NM_180990) Human Tagged ORF Clone
Tag:	Myc-DDK
Symbol:	LGICZ1
Synonyms:	L2; LGICZ; LGICZ1; ZAC; ZAC1
Mammalian Cell Selection:	Neomycin
Vector:	pCMV6-Entry (PS100001)
E. coli Selection:	Kanamycin (25 ug/mL)
ORF Nucleotide Sequence:	>RC212824 ORF sequence Red=Cloning site Blue=ORF Green=Tags(s)

TTTTGTAATACGACTCACTATAGGGCGGCCGGAATTCGTCGACTGGATCCGGTACCGAGGAGATCTGCC
GCC**CGATCGCC**

ATGGCCATATGGTCCCTGCTCCATCTCACCTTCTGGGGTTCAGCATTACCTTGCTGTTGGTCCACGGGC
AGGGCTTCCAAGGGACAGCAGCCATCTGGCCATCCCTCTCAACGTCAACTTGCCAAGAAGGTTTCAGGA
AAGCATCCAGATCCCGAACAAATGGGAGTGCGCCCTGCTCGTGGATGTGCGGGTGTGTTGCTCCAACGTG
TTAATGTGGACATCCTGCGATACAAATGCTCCATGCTGCTTAGGCTGCTGCTGGACTGACACTC
GCCTGGCCTGGAACACTAGTGCACACCCGCGGCACGCCATCACGCTGCCCTGGGAGTCTCTCTGGACACC
AAGGCTCACCATCTGGAGGCGCTCTGGGTGGACTGGAGGGACCAGAGCCCCAGGCTCGAGTAGACCAG
GACGGCCACGTGAAGCTCAACCTGGCCCTCACCGGAGACCAACTGCAACTTTGAGCTCCTCCACTTCC
CCCGGGACCACAGCAACTGCAGCCTCAGCTTCTACGCTCTCAGCAACACGGCGATGGAGTTAGAGTTCCA
GGCCCACGTGGTGAACGAGATTGTGAGTGTCAAGAGGGAATACGTAGTTTATGATCTGAAGACCCAAGTC
CCACCCAGCAGCTGGTGCCTGCTTCCAGGTGACGCTGAGGCTGAAGAACACGGCGCTCAAGTCCATCA
TCGCTCTTTGGTGCCTGCAGAGGCACTGCTGTTGGCTGACGTGTGCGGGGGTGTGCTGCCCTCCGGGC
CATTGAGCGCATAGGCTACAAGGTGACATTGCTGCTGAGTTACCTCGTCTCCACTCCTCCCTGGTGCAG
GCCCTGCCAGCTCCTCCTCTGCAACCCACTGCTCATTTACTACTTACCATCTGCTGCTGCTGCT
TCCTCAGCACCATAGAGACTGTGCTGCTGGCTGGGCTGCTGGCCCGGGCAACCTTGGGGCAAGAGCGG
CCCCAGCCAGCCCCGAGAGGGGAACAGCGAGAGCACGGCAACCCAGGGCCTCATCCTGTGAAGAGCCC
TCCAGAGGAGTAAAGGGGTACAGAGAAGCTGGCCTGAGACTGCTGACCGCATCTTCTCCTCGTGTATG
TGGTTGGGGTGTGTGCACCAATTCGTCTTTCAGGAATCTGGATGTGGGCAGCGTGCAAGTCTGACGC
AGCCCTGGAGAGGCTGCACCCCATGGCAGGGCCTAGACTG

ACGGTACGGCGCGCTCGAGCAGAACTCATCTCAGAAGAGGATCTGGCAGCAATGATATCCTGGATT
ACAAGGATGACGACGATAAGGTTTAA



[View online »](#)

Protein Sequence: >RC212824 protein sequence
Red=Cloning site Green=Tags(s)

MALWSLLHLTFLGFSITLLL VHGGFQGTAAIWPSLFNVNLSKKVQESI QIPNNGSAPLLVDVRFVSNV
 FNVDILRYTMSSMLLLRLSWLDTRLAWNTSAHPRHAITLPWESLWTPRLTILEALWVDRDQSPQARVDQ
 DGHVKNLALTTETNCFELLHFPRDHNSCSLSFYALSNTAMELEFQAHVVNEIVSVKREYVVYDLKTQV
 PPQQLVPCFQVTLRLKNTALKSIIALLVPAEALLLADVCGLLPLRAIERIGYKVTLLLSYLVLHSSLVQ
 ALPSSSSCNPLLIYYFTILLLLFLSTIETVLLAGLLARGNLGAKSGPSPAPRGEQREHGNGPHPAEEP
 SRGVKGSQRSWPETADRIFFLVYVGVLC TQFVFAGIWMWAACKSDAAPGEAAPHGRRPRL

TRTRPLEQKLISEEDLAANDILDYKDDDDKV

Chromatograms: https://cdn.origene.com/chromatograms/mk6447_b02.zip

Restriction Sites: SgfI-MluI

Cloning Scheme:



ACCN: NM_180990

ORF Size: 1233 bp

OTI Disclaimer: The molecular sequence of this clone aligns with the gene accession number as a point of reference only. However, individual transcript sequences of the same gene can differ through naturally occurring variations (e.g. polymorphisms), each with its own valid existence. This clone is substantially in agreement with the reference, but a complete review of all prevailing variants is recommended prior to use. [More info](#)

OTI Annotation: This clone was engineered to express the complete ORF with an expression tag. Expression varies depending on the nature of the gene.

Components: The ORF clone is ion-exchange column purified and shipped in a 2D barcoded Matrix tube containing 10ug of transfection-ready, dried plasmid DNA (reconstitute with 100 ul of water).

Reconstitution Method:

1. Centrifuge at 5,000xg for 5min.
2. Carefully open the tube and add 100ul of sterile water to dissolve the DNA.
3. Close the tube and incubate for 10 minutes at room temperature.
4. Briefly vortex the tube and then do a quick spin (less than 5000xg) to concentrate the liquid at the bottom.
5. Store the suspended plasmid at -20°C. The DNA is stable for at least one year from date of shipping when stored at -20°C.

RefSeq: [NM_180990.4](#)

RefSeq Size: 1473 bp

RefSeq ORF: 1239 bp

Locus ID: 353174

UniProt ID: [Q401N2](#)

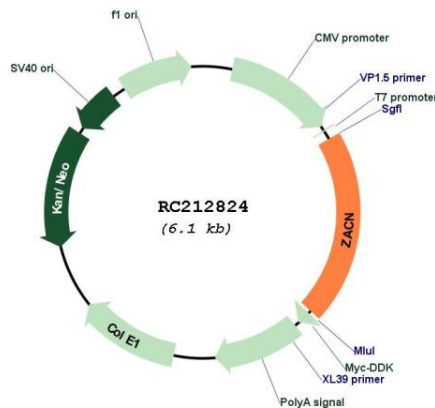
Cytogenetics: 17q25.1

Protein Families: Druggable Genome, Ion Channels: Other, Transmembrane

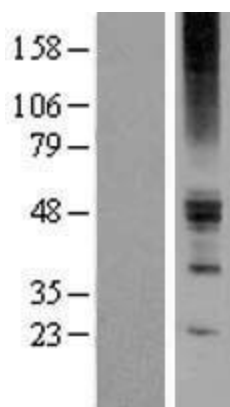
MW: 45.7 kDa

Gene Summary: LGICZ1 is a zinc-activated ligand-gated ion channel that defines a new subgroup of the cysteine-loop superfamily of ligand-gated ion channels (Davies et al., 2003 [PubMed 12381728]).[supplied by OMIM, Mar 2008]

Product images:



Circular map for RC212824



Western blot validation of overexpression lysate (Cat# [LY405837]) using anti-DDK antibody (Cat# [TA50011-100]). Left: Cell lysates from untransfected HEK293T cells; Right: Cell lysates from HEK293T cells transfected with RC212824 using transfection reagent MegaTran 2.0 (Cat# [TT210002]).