

Product datasheet for RC212818

SPI1 (NM_003120) Human Tagged ORF Clone

Product data:

Product Type:	Expression Plasmids
Product Name:	SPI1 (NM_003120) Human Tagged ORF Clone
Tag:	Myc-DDK
Symbol:	SPI1
Synonyms:	OF; PU.1; SFPI1; SPI-1; SPI-A
Mammalian Cell Selection:	Neomycin
Vector:	pCMV6-Entry (PS100001)
E. coli Selection:	Kanamycin (25 ug/mL)
ORF Nucleotide Sequence:	>RC212818 representing NM_003120 Red=Cloning site Blue=ORF Green=Tags(s)

TTTTGTAATACGACTCACTATAGGGCGGCCGGAATTCGTCGACTGGATCCGGTACCGAGGAGATCTGCC
GCC**CGATCGCC**

ATGTTACAGGCGTGCAAATGGAAGGTTTCCCCTCGTCCCCCTCCATCAGAAGACCTGGTGCCCTATG
ACACGGATCTATACCAACGCCAAACGCACGAGTATTACCCTATCTCAGCAGTGATGGGGAGAGCCATAG
CGACCTACTGGGACTCCACCCACCACGTGCACAGCGAGTTCGAGAGCTTCGCCGAGAACAATTC
ACGGAGCTCCAGAGCGTGCAGCCCCGAGCTGCAGCAGCTCTACCGCCACATGGAGCTGGAGCAGATGC
ACGTCCTCGATACCCCATGGTGCCACCCATCCAGTCTTGCCACCAGGTCTCTACCTGCCCGGAT
GTGCTCCAGTACCCATCCCTGTCCCAGCCAGCCAGCTCAGATGAGGAGGAGGGCGAGCGGCAGAGC
CCCCACTGGAGGTGTCTGACGGCGAGGCGGATGGCTGGAGCCCGGGCTGGGCTCCTGCCTGGGGAGA
CAGGCAGCAAGAAGAAGATCCGCTGTACCAGTTCCTGTTGGACCTGCTCCGAGCGGCGACATGAAGGA
CAGCATCTGGTGGGTGGACAAGGACAAGGGCACCTTCCAGTTCCTGTCGAAGCACAAGGAGGCGCTGGCG
CACCGCTGGGGCATCCAGAAGGGCAACCGCAAGAAGATGACCTACCAGAAGATGGCGCGCGCTGCGCA
ACTACGGCAAGACGGGCGAGGTCAAGAAGTGAAGAAGAAGCTCACCTACCAGTTCAGCGGCGAAGTGT
GGGCCGCGGGGCTGGCCGAGCGGCCACCCGCCAC

ACGCGTACGCGGCCGCTCGAGCAGAACTCATCTCAGAAGAGGATCTGGCAGCAAATGATATCCTGGATT
ACAAGGATGACGACGATAAGGTTTAA



[View online »](#)

Protein Sequence: >RC212818 representing NM_003120
 Red=Cloning site Green=Tags(s)

MLQACKMEGFPLVPPPSIDLVPYDIDL YQRQTHEYYPYLSSDGESHSDHYWDFHPHHVHSEFESFAENNF
 TELQSVQPPQLQLYRHMELQMHVLDTPMVPHPHSLGHQVSYLPRMCLQYPSLSPAQPSDEEEGERQS
 PPLEVSDGEADGLEPGPLLPGETGSKKIRLYQFLDLLRSGDMKDSIWWVDKDKGTFQFSSKHKEALA
 HRWGIQKGNRKKMTYQKMARALRNYGKTGEVKKVKKKLYQFSGEVLGRGGLAERRHPPH

TRTRPLEQKLISEEDLAANDILDYKDDDDKV

Chromatograms: https://cdn.origene.com/chromatograms/mk6101_c05.zip

Restriction Sites: SgfI-MluI

Cloning Scheme:

Cloning sites used for ORF Shuttling:



* The last codon before the Stop codon of the ORF

ACCN: NM_003120

ORF Size: 810 bp

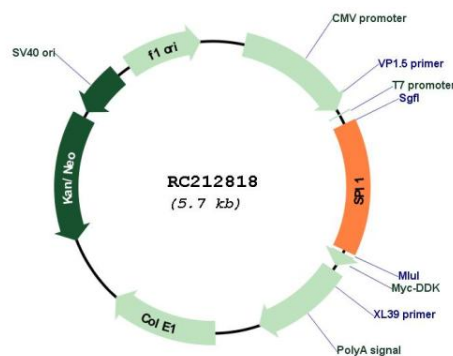
OTI Disclaimer: The molecular sequence of this clone aligns with the gene accession number as a point of reference only. However, individual transcript sequences of the same gene can differ through naturally occurring variations (e.g. polymorphisms), each with its own valid existence. This clone is substantially in agreement with the reference, but a complete review of all prevailing variants is recommended prior to use. [More info](#)

OTI Annotation: This clone was engineered to express the complete ORF with an expression tag. Expression varies depending on the nature of the gene.

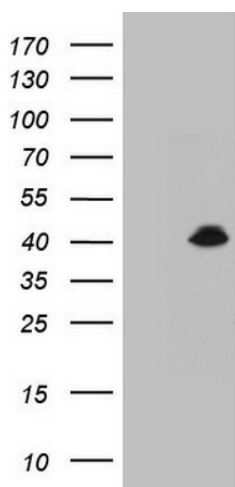
Components: The ORF clone is ion-exchange column purified and shipped in a 2D barcoded Matrix tube containing 10ug of transfection-ready, dried plasmid DNA (reconstitute with 100 ul of water).

Reconstitution Method:	<ol style="list-style-type: none">1. Centrifuge at 5,000xg for 5min.2. Carefully open the tube and add 100ul of sterile water to dissolve the DNA.3. Close the tube and incubate for 10 minutes at room temperature.4. Briefly vortex the tube and then do a quick spin (less than 5000xg) to concentrate the liquid at the bottom.5. Store the suspended plasmid at -20°C. The DNA is stable for at least one year from date of shipping when stored at -20°C.
RefSeq:	NM_003120.3
RefSeq Size:	1423 bp
RefSeq ORF:	813 bp
Locus ID:	6688
UniProt ID:	P17947
Cytogenetics:	11p11.2
Domains:	ETS
Protein Families:	Transcription Factors
Protein Pathways:	Acute myeloid leukemia, Pathways in cancer
MW:	30.9 kDa
Gene Summary:	This gene encodes an ETS-domain transcription factor that activates gene expression during myeloid and B-lymphoid cell development. The nuclear protein binds to a purine-rich sequence known as the PU-box found near the promoters of target genes, and regulates their expression in coordination with other transcription factors and cofactors. The protein can also regulate alternative splicing of target genes. Multiple transcript variants encoding different isoforms have been found for this gene. [provided by RefSeq, Jul 2008]

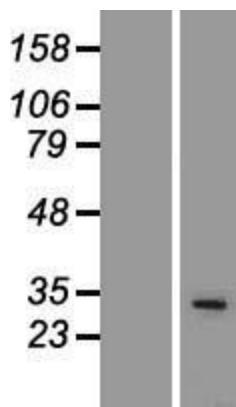
Product images:



Circular map for RC212818



HEK293T cells were transfected with the pCMV6-ENTRY control (Cat# [PS100001], Left lane) or pCMV6-ENTRY SPI1 (Cat# RC212818, Right lane) cDNA for 48 hrs and lysed. Equivalent amounts of cell lysates (5 ug per lane) were separated by SDS-PAGE and immunoblotted with anti-SPI1 (Cat# [TA808850])(1:2000). Positive lysates [LY418885] (100ug) and [LC418885] (20ug) can be purchased separately from OriGene.



Western blot validation of overexpression lysate (Cat# [LY418885]) using anti-DDK antibody (Cat# [TA50011-100]). Left: Cell lysates from untransfected HEK293T cells; Right: Cell lysates from HEK293T cells transfected with RC212818 using transfection reagent MegaTran 2.0 (Cat# [TT210002]).