

## Product datasheet for **RC212796**

### **GALNT17 (NM\_022479) Human Tagged ORF Clone**

#### **Product data:**

Product Type:	Expression Plasmids
Product Name:	GALNT17 (NM_022479) Human Tagged ORF Clone
Tag:	Myc-DDK
Symbol:	GALNT17
Synonyms:	GalNAc-T5L; GalNAc-T17; GalNAc-T19; GALNACT17; GALNT16; GALNT20; GALNTL3; WBSCR17
Mammalian Cell Selection:	Neomycin
Vector:	pCMV6-Entry (PS100001)
E. coli Selection:	Kanamycin (25 ug/mL)



[View online »](#)

**ORF Nucleotide Sequence:**

>RC212796 representing NM\_022479  
 Red=Cloning site Blue=ORF Green=Tags(s)

TTTTGTAATACGACTCACTATAGGGCGGCCGGAATTCGTCGACTGGATCCGGTACCGAGGAGATCTGCC  
 GCC**CGGATCGCC**

ATGGCTTCACTGAGAAGAGTCAAAGTGCTGTTGGTGTGAACCTGATCGCGGTAGCCGGCTTCGTGCTCT  
 TCCTGGCCAAGTGCCGGCCCATCGCGGTGCGCAGCGGAGACGCCTTCCACGAGATCCGGCCGCGCCGA  
 GGTGGCCAACCTCAGCGCGCACAGCGCCAGCCCATCCAGGATGCGGTCTGAAGCGCTGTGCTGCTG  
 GAGGACATCGTGTACCGGACGTGAATGGCTTATCCAAATCCCTTGGGCTCATTGAAGGTTATGGTGGG  
 GGGGTAAGGGGGCTTCCGGCTACTCTTCCCGGCTGAAGAAGAAAAGGCTAAGGGACCCCATGAGAA  
 GTATGGCTACAATTCATACCTCAGTGAATAATTTCACTGGACCGTTCATTCCGGATTATCGTCCCACC  
 AAGTGAAGGAGCTCAAGTACTCCAAGGACCTGCCCCAGATATCCATCATATTTCATCTTCGTGAACGAGG  
 CCCTGTCGGTGATCCTGCGGTCCGTGCACAGTCCGCTCAATCACACGCCACACACCTGTGAAGGAAAT  
 CATTCTGGTGGATGACAACAGCGACGAAGAGGAGCTGAAGGTCCCCTAGAGGAGTATGCCACAAACGC  
 TACCCCGGGCTGGTGAAGGTGGTAAGAAATCAGAAGAGGGAAAGGCTGATCCGCGCTCGCATTGAGGGCT  
 GGAAGGTGGCTACCGGGCAGTCACTGGCTTCTTTGATGCCACGTGGAATTCACCGCTGGCTGGGCTGA  
 GCCGGTCTATCCCGCATCCAGGAAAACCGAAGCGTGTGATCCTCCCCTCCATTGACAACATCAAACAG  
 GACAACCTTGGAGTGCAGCGGTACGAGAATCGGCCACGGGTACAGCTGGGAGCTGTGGTGCATGTACA  
 TCAGCCCCCAAAGACTGGTGGGACGCCGGAGACCTTCTCTCCCCATCAGGACCCAGCCATGATAGG  
 CTGCTCGTTCTGGTCAACAGGAAGTCTTCGGTGAATGGTCTTCTGGATCCTGGCATGGATGTATAC  
 GGAGGAGAAAAATTGAACTGGGAATCAAGGTATGGCTCTGTGGGGCAGCATGGAGTCCCTTCTTCTG  
 CACGGGTGGCCACATTGAGCGGAAGAAGAAGCCATATAATAGCAACATTGGCTTCTACACCAAGAGGAA  
 TGCTTTCGCGTGTGAGGTCTGGATGGACGATTACAAGTCTCATGTGTACATAGCGTGGAAACCTGCCG  
 CTGGAGAATCCGGGAATTGACATCGGTGATGTCTCCGAAAGAAGAGCATTAAAGAAAAGTTAAAGTGTA  
 AGAATTTCCAGTGGTACCTGGACCATGTTTACCCAGAAATGAGAAGATACAATAATACCGTTGCTTACGG  
 GGAGCTTCGCAACAACAAGGCAAAGACGTCTGCTTGGACCAGGGGCCGCTGGAGAACCACACAGCAATA  
 TTGTATCCGTGCCATGGCTGGGACCACAGCTTGCCTGCTACACCAAGGAAGGCTTCTGCACTTGGGTG  
 CCCTGGGACCACCACACTCCTCCCTGACACCCGCTGCCTGGTGGACAACTCCAAGAGTCGGCTGCCCA  
 GCTCCTGGACTGCGACAAGGTCAAGAGCAGCCTGTACAAGCGCTGGAACCTCATCCAGAATGGAGCCATC  
 ATGAACAAGGGCACGGGACGCTGCCTGGAGGTGGAGAACCGGGCTGGCTGGCATGCACCTCATCTCC  
 GCAGTGCACAGGTCAGAGGTGGACCATTAAGAACTCCATCAAG

**ACGCGT**ACGCGGCCGCTCGAGCAGAAACTCATCTCAGAAGAGGATCTGGCAGCAAATGATATCCTGGATT  
 ACAAGGATGACGACGATAAGGTTTAA

**Protein Sequence:**

>RC212796 representing NM\_022479  
 Red=Cloning site Green=Tags(s)

MASLRVKVLLVLNLIIVAGFVLFIAKCRPIAVRSGDAFHEIRPRAEVANLSAHSASPIQDAVLKRLSLL  
 EDIVYRQLNGLSKSLGLIEGYGGRGKGLPATLSPAEEEEKAKGPHEKYGYNSYLSEKISLDRSIPDYRPT  
 KCKELKYSKDLPIISIIIFVNEALSVILRSVHSVHNHTPHLLKEIILVDDNSDEEELKVPLEEYVHKR  
 YPGLVKVVRNQKREGLIRARIEGWKQVATGQVTGFFDAHVEFTAGWAEPVLSRIQENRKRKRVILPSIDNIKQ  
 DNFEVQRYENSAHGYSWELWCMYISPPKDWWDAGDPSLPITPAMIGCSFVVRNRFKFEIGLLDPGMDVY  
 GGENIELGIKVLWCGGSMEVLPCSRVAHIERKKKPYNSNIGFYTKRNALRVAEVMDDYKSHVYIAWNLP  
 LENPGIDIGDVSERRALRSLKCKNFQWYLDHVYPMRRYNNTVAYGELRNNKAKDVCLDQGPLNHTAI  
 LYPCHGWGPQLARYTKEGFLHLGALGTTLLPDTRCLVDNSKSRPQLLDCKDKVSSLYKRWNFIQNGAI  
 MNKGTGRCLEVENRGLAGIDLILRSCTGQRWTIKNSIK

**TR**TRPLEQKLISEEDLAANDILDYKDDDDKV

**Chromatograms:**

[https://cdn.origene.com/chromatograms/mk6108\\_c11.zip](https://cdn.origene.com/chromatograms/mk6108_c11.zip)

Restriction Sites: SgfI-MluI

Cloning Scheme:



ACCN: NM\_022479

ORF Size: 1794 bp

OTI Disclaimer: The molecular sequence of this clone aligns with the gene accession number as a point of reference only. However, individual transcript sequences of the same gene can differ through naturally occurring variations (e.g. polymorphisms), each with its own valid existence. This clone is substantially in agreement with the reference, but a complete review of all prevailing variants is recommended prior to use. [More info](#)

OTI Annotation: This clone was engineered to express the complete ORF with an expression tag. Expression varies depending on the nature of the gene.

Components: The ORF clone is ion-exchange column purified and shipped in a 2D barcoded Matrix tube containing 10ug of transfection-ready, dried plasmid DNA (reconstitute with 100 ul of water).

- Reconstitution Method:
1. Centrifuge at 5,000xg for 5min.
  2. Carefully open the tube and add 100ul of sterile water to dissolve the DNA.
  3. Close the tube and incubate for 10 minutes at room temperature.
  4. Briefly vortex the tube and then do a quick spin (less than 5000xg) to concentrate the liquid at the bottom.
  5. Store the suspended plasmid at -20°C. The DNA is stable for at least one year from date of shipping when stored at -20°C.

Note: Plasmids are not sterile. For experiments where strict sterility is required, filtration with 0.22um filter is required.

RefSeq: [NM\\_022479.3](#)

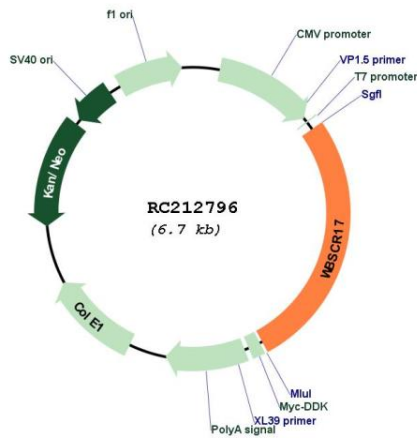
RefSeq Size: 3298 bp

RefSeq ORF: 1797 bp

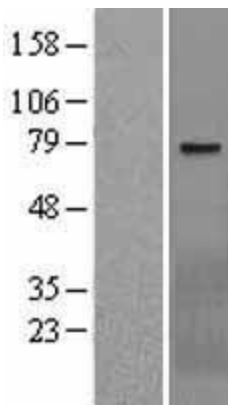
**Locus ID:** 64409  
**UniProt ID:** [Q6IS24](#)  
**Cytogenetics:** 7q11.22  
**Domains:** RICIN, Glycos\_transf\_2  
**Protein Families:** Transmembrane  
**Protein Pathways:** Metabolic pathways, O-Glycan biosynthesis  
**MW:** 67.6 kDa

**Gene Summary:** This gene encodes an N-acetylgalactosaminyltransferase. This gene is located centromeric to the common deleted region in Williams-Beuren syndrome (WBS), a multisystem developmental disorder caused by the deletion of contiguous genes at 7q11.23. This protein may play a role in membrane trafficking. [provided by RefSeq, Jan 2013]

### Product images:



Circular map for RC212796



Western blot validation of overexpression lysate (Cat# [LY402927]) using anti-DDK antibody (Cat# [TA50011-100]). Left: Cell lysates from untransfected HEK293T cells; Right: Cell lysates from HEK293T cells transfected with RC212796 using transfection reagent MegaTran 2.0 (Cat# [TT210002]).