

## Product datasheet for **RC212789**

### **DBNDD1 (NM\_001042610) Human Tagged ORF Clone**

#### Product data:

**Product Type:** Expression Plasmids  
**Product Name:** DBNDD1 (NM\_001042610) Human Tagged ORF Clone  
**Tag:** Myc-DDK  
**Symbol:** DBNDD1  
**Mammalian Cell Selection:** Neomycin  
**Vector:** pCMV6-Entry (PS100001)  
**E. coli Selection:** Kanamycin (25 ug/mL)  
**ORF Nucleotide Sequence:** >RC212789 representing NM\_001042610  
**Red**=Cloning site **Blue**=ORF **Green**=Tags(s)

TTTTGTAATACGACTCACTATAGGGCGGCCGGGAATTCGTCGACTGGATCCGGTACCGAGGAGATCTGCC  
GCC**CGATCGCC**

**ATGGAGCCCCGGAGGGCGCCGGCACCGGAGAGATCGTTAAGGAGGCTGAGGTGCCCGAGGCTGCGCTGG  
CGTCCCAGCCCAGGGGACAGGGGACAATGGCCACACGCCTGTGGAGGAGGAGGTCCGGGGCATCCCAGT  
ACCAGCACCGGGCTCCTGCAGGTCACGGAGAGGAGGCAGCCTCTGAGCAGCGTCTCCTCTCTGGAGGTC  
CACTTCGACCTCCTGGACCTCACTGAGCTACCGACATGTCGGACCAGGAGCTGGCCGAGGTCTTTGCTG  
ACTCGGACGACGAGAACCTCAACACCGAGTCCCAGCAGGTCTGCACCCGCTGCCCGGGCCGGTACCT  
GCGCTCCCTTCCTGGACGAGGACAAGGGCTGAGCAGAGCCACGAGAAGCAGCCCTAGGGCAGCCCGAG  
CGGCAGGCCACAGTCTGGACACGTTTCTCACTGTGGAGAGGCCCCAGGAGGAC**

**ACGCGTACGCGGCCGCTCGAGCAGAACTCATCTCAGAAGAGGATCTGGCAGCAAATGATATCCTGGATT  
ACAAGGATGACGACGATAAGGTTTAA**

**Protein Sequence:** >RC212789 representing NM\_001042610  
**Red**=Cloning site **Green**=Tags(s)

MEPPEGAGTGEIVKEAEVPAALGVPAQGTGDNHPTVEEEVGGIPVPAPGLLQVTERRQPLSSVSSLEV  
HFDLLDL TELTDMSDQELAEVFADSDDENLNTESAPGLHPLPRAGYLRSWTRTRAEQSHEKQPLGDPE  
RQATVLDTFLTVERPQED

**TRTRPLEQKLISEEDLAANDILDYKDDDDKV**

**Chromatograms:** [https://cdn.origene.com/chromatograms/ja1462\\_a04.zip](https://cdn.origene.com/chromatograms/ja1462_a04.zip)

**Restriction Sites:** SgfI-MluI



[View online »](#)

**Cloning Scheme:**


**ACCN:** NM\_001042610

**ORF Size:** 474 bp

**OTI Disclaimer:** The molecular sequence of this clone aligns with the gene accession number as a point of reference only. However, individual transcript sequences of the same gene can differ through naturally occurring variations (e.g. polymorphisms), each with its own valid existence. This clone is substantially in agreement with the reference, but a complete review of all prevailing variants is recommended prior to use. [More info](#)

**OTI Annotation:** This clone was engineered to express the complete ORF with an expression tag. Expression varies depending on the nature of the gene.

**Components:** The ORF clone is ion-exchange column purified and shipped in a 2D barcoded Matrix tube containing 10ug of transfection-ready, dried plasmid DNA (reconstitute with 100 ul of water).

- Reconstitution Method:**
1. Centrifuge at 5,000xg for 5min.
  2. Carefully open the tube and add 100ul of sterile water to dissolve the DNA.
  3. Close the tube and incubate for 10 minutes at room temperature.
  4. Briefly vortex the tube and then do a quick spin (less than 5000xg) to concentrate the liquid at the bottom.
  5. Store the suspended plasmid at -20°C. The DNA is stable for at least one year from date of shipping when stored at -20°C.

**Note:** Plasmids are not sterile. For experiments where strict sterility is required, filtration with 0.22um filter is required.

**RefSeq:** [NM\\_001042610.3](#)

**RefSeq Size:** 2150 bp

**RefSeq ORF:** 477 bp

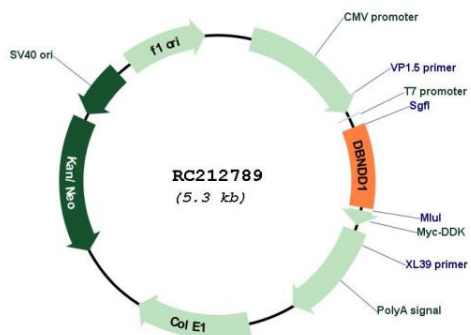
**Locus ID:** 79007

UniProt ID: Q9H9R9

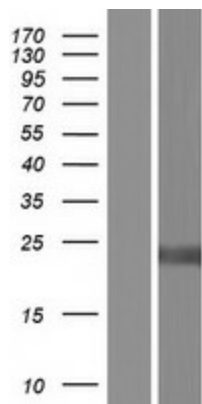
Cytogenetics: 16q24.3

MW: 16.9 kDa

**Product images:**



Circular map for RC212789



Western blot validation of overexpression lysate (Cat# [LY421006]) using anti-DDK antibody (Cat# [TA50011-100]). Left: Cell lysates from untransfected HEK293T cells; Right: Cell lysates from HEK293T cells transfected with RC212789 using transfection reagent MegaTran 2.0 (Cat# [TT210002]).