

## Product datasheet for **RC212781**

### **RAP1GDS1 (NM\_001100427) Human Tagged ORF Clone**

#### **Product data:**

|                           |  |
|---------------------------|--|
| Product Type:             | Expression Plasmids                            |
| Product Name:             | RAP1GDS1 (NM_001100427) Human Tagged ORF Clone |
| Tag:                      | Myc-DDK  |
| Symbol:                   | RAP1GDS1                                       |
| Synonyms:                 | GDS1; SmgGDS                                   |
| Mammalian Cell Selection: | Neomycin                                       |
| Vector:                   | pCMV6-Entry (PS100001)                         |
| E. coli Selection:        | Kanamycin (25 ug/mL)                           |



[View online »](#)

**ORF Nucleotide Sequence:**

>RC212781 ORF sequence  
 Red=Cloning site Blue=ORF Green=Tags(s)

TTTTGTAATACGACTCACTATAGGGCGGCCGGAATTCGTCGACTGGATCCGGTACCGAGGAGATCTGCC  
 GCC**CGCATCGCC**

ATGGCAGATAATCTCAGTGATACCTTGAAGAAGCTGAAGATAACAGCTGTTGACAAGACTGAGGATAGTT  
 TAGAAGGATGCTTGGATTGTCTGCTTCAAGCCCTGGCTCAAAAATAATACGGAAACAAGTAAAAATCCA  
 AGCAAGTGAATACTTCAGCTGTTTGAACCTCTGTTGACTCCACAGTCTTCTGCAAAGCCAAAGTAGCT  
 AACATCATAGCAGAAGTAGCCAAAAATGAGTTTATGCGAATTCATGTGTGGATGCTGGATTGATTTAC  
 CACTGGTGCAGCTGCTAAATAGCAAAGACCAGGAAGTGTCTTCAAACGGGCAGGGCTCTAGGAAACAT  
 ATGTTACGATAGCCATGAGGGCAGAAGTGCAGTTGACCAAGCAGGTGGTGCACAGATTGTAATTGACCAT  
 TTAAGGTCAGTGTGCAGTATAACAGATCCCGCAATGAGAAGCTTTGACTGTCTTTGTGGCATGCTGA  
 TGAATATAGCAATGAGAATGATTGCTTCAAGCTCAGCTTATCAATATGGGTGTTATTCCTACCTTAGT  
 GAAATTACTGGGCATCCACTGCCAAAATGCAGCTTTACAGAAAATGTGTCTTGTTCATTGGTAATTTA  
 GCAGAACTTGAGTCAAGTAAAGAACAGTTTGCCAGTACAAACATTGCTGAAGAGCTAGTAAAACCTTTCA  
 AGAAAACAATAGAACATGATAAGAGAGAAAATGATTTTTGAAGTCTTGTCTCCATTGGCAGAAAATGATGC  
 TATTAACACAGCTGGTTGAAGCAGGCCTAGTAGAGTGTCTACTAGAGATTGTTGAGCAAAAAGTGGAT  
 AGTGACAAAAGAAGATGATTAAGTGCAGCTCAAACTGGTTCAGATCTCATGGTTTTATTACTTCTTGGAG  
 ATGAATCCATGCAGAAGTATTTGAAGGAGGAAAAGGTAGTGTATTTCAAAGGACTCTCTTGGATCCC  
 ATCAAATAACCACAGCTACAGCTTGTGGAGCATTGGCAATTGCAAATTTGCCAGAAAATGATGCAAAAT  
 TGTATTCATATGGTAGACAATGGGATTGTAGAAAACTTATGGATTTACTGGACAGACATGTAGAAGATG  
 GAAATGTAACAGTACAGCATGCAGCACTAAGTGCCTCAGAAAACCTGGCCATTCCAGTTATAAATAAAGC  
 AAAGATGTTATCAGCTGGGGTACAGAGGCAGTTTTGAAATTTCTTAAATCTGAAATGCCTCCTGTTGAG  
 TTCAAACCTTCTGGGAACATTAAGAATGTTAATAGATGCACAAGAAGCTGCTGAACAATTGGGAAAAGATG  
 TTAAGTTAGTGGAGCGTTTTGGTGAATGGTGTGAAGCCAAAGATCATGCTGGTGTGATGGGGAGTCAAA  
 CAGACTGCTGTCTGCCCTTATACGACACAGTAAATCAAAGATGTAATTAACCATTGTGCAGAGTGGT  
 GGCATCAAGCATCTAGTTACCATGGCACTAGTGAACATGTAATAATGCAGAATGAAGCTCTTGTGCTT  
 TGGCATTAAATAGCAGCTTGAATTTGGCACTGCTGAGAAAGATCTAGAAAGTCTAAACTGTACAGAT  
 TTTACATAGACTGCTAGCAGATGAGAGAAGTGTCTGAAATCAAATATAATTCCATGGTCTGATATGT  
 GCTCTTATGGGATCTGAATGTCTACACAAGGAAGTACAGGATTTGGCTTTCTAGATGTCGTATCCAAAC  
 TTCGCAGTCATGAGAACAAAAGTGTGCCAGCAGGCCTCTCTCACAGAGCAGAGACTTACTGTGAAAAG  
 C

**ACGCGT**ACGCGGCCGCTCGAGCAGAAACTCATCTCAGAAGAGGATCTGGCAGCAAATGATATCCTGGATT  
 ACAAGGATGACGACGATAAGGTTTAA

**Protein Sequence:**

>RC212781 protein sequence  
 Red=Cloning site Green=Tags(s)

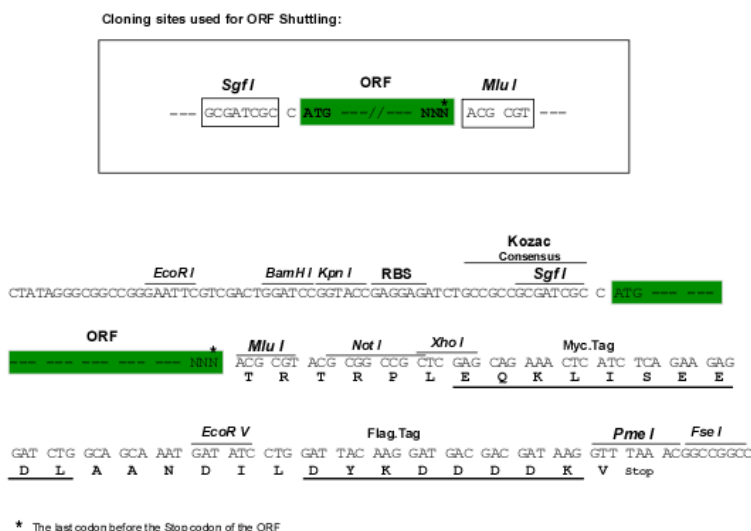
MADNLSDTLKKLKITAVDKTEDSLEGCLDCLLQALAQNNETSEKIQASGILQLFATLLTPQSSCKAKVA  
 NIIAEVAKNEFMRIPCVDAGLISPLVQLLNSKDQEVLLQTGRALGNICYDSHEGRSAVDQAGGAQIVIDH  
 LRSLCSITDPANEKLLTVFCGMLMNYSNENDSLQAQLINMGVIPTLVKLLGIHCQNAALTEMCLVAFGNL  
 AELESSKEQFASTNIAEELVKLFFKQIEHDKREMI FEVLAPLAENDA IKLQLVEAGLVECLLEIVQQKVD  
 SDKEDDITELKTGSDLMVLLLLGDSEMQKLFEGGKGSVFQRVLSWIPSNHQLQLAGALAIANFARNDAN  
 CIHMVNGIVEKLMDLLDRHVEDGNVTVQHAALSALRNLAIPVINKAKMLSAGVTEAVLKFLKSEMPVQ  
 FKLLGTLRMLIDAQEAEEQLGKNVKLVERLVEWCEAKDHAGVMGESNRLLSALIRHKS KDVIKTI VQSG  
 GIKHLVTMATSEHVIMQNEALVALALIAALELGTAEKDLES AKLVQILHRL LADERSAPEIKYNSMVLIC  
 ALMGSECLHKEVQDLAFLDVVSKLRSHENKSVAAQASL TEQR LTVES

**TR**TRPLEQKLISEEDLAANDILDYKDDDDKV

**Chromatograms:** [https://cdn.origene.com/chromatograms/mk6155\\_a01.zip](https://cdn.origene.com/chromatograms/mk6155_a01.zip)

**Restriction Sites:** SgfI-MluI

**Cloning Scheme:**



**ACCN:** NM\_001100427

**ORF Size:** 1821 bp

**OTI Disclaimer:** The molecular sequence of this clone aligns with the gene accession number as a point of reference only. However, individual transcript sequences of the same gene can differ through naturally occurring variations (e.g. polymorphisms), each with its own valid existence. This clone is substantially in agreement with the reference, but a complete review of all prevailing variants is recommended prior to use. [More info](#)

**OTI Annotation:** This clone was engineered to express the complete ORF with an expression tag. Expression varies depending on the nature of the gene.

**Components:** The ORF clone is ion-exchange column purified and shipped in a 2D barcoded Matrix tube containing 10ug of transfection-ready, dried plasmid DNA (reconstitute with 100 ul of water).

**Reconstitution Method:**

1. Centrifuge at 5,000xg for 5min.
2. Carefully open the tube and add 100ul of sterile water to dissolve the DNA.
3. Close the tube and incubate for 10 minutes at room temperature.
4. Briefly vortex the tube and then do a quick spin (less than 5000xg) to concentrate the liquid at the bottom.
5. Store the suspended plasmid at -20°C. The DNA is stable for at least one year from date of shipping when stored at -20°C.

**RefSeq Size:** 3767 bp

**RefSeq ORF:** 1824 bp

**Locus ID:** 5910

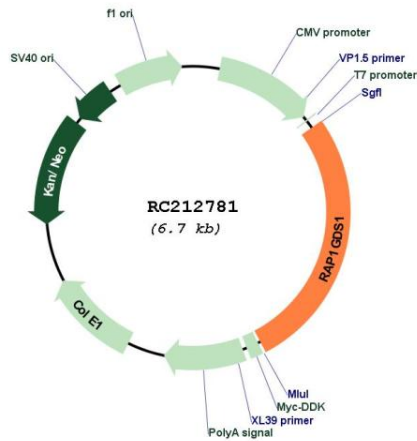
UniProt ID: [P52306](#)

Cytogenetics: 4q23

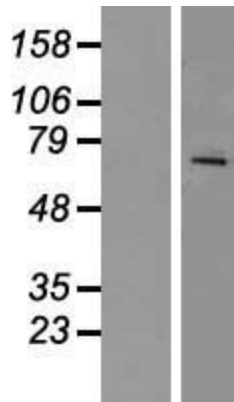
MW: 66.3 kDa

Gene Summary: The smg GDP dissociation stimulator (smgGDS) protein is a stimulatory GDP/GTP exchange protein with GTPase activity (Riess et al., 1993 [PubMed 8262526]).[supplied by OMIM, Feb 2010]

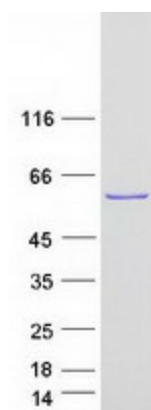
**Product images:**



Circular map for RC212781



Western blot validation of overexpression lysate (Cat# [LY420266]) using anti-DDK antibody (Cat# [TA50011-100]). Left: Cell lysates from untransfected HEK293T cells; Right: Cell lysates from HEK293T cells transfected with RC212781 using transfection reagent MegaTran 2.0 (Cat# [TT210002]).



Coomassie blue staining of purified RAP1GDS1 protein (Cat# [TP312781]). The protein was produced from HEK293T cells transfected with RAP1GDS1 cDNA clone (Cat# RC212781) using MegaTran 2.0 (Cat# [TT210002]).