

## Product datasheet for RC212780

### DECTIN 2 (CLEC6A) (NM\_001007033) Human Tagged ORF Clone

#### Product data:

**Product Type:** Expression Plasmids  
**Product Name:** DECTIN 2 (CLEC6A) (NM\_001007033) Human Tagged ORF Clone  
**Tag:** Myc-DDK  
**Symbol:** DECTIN 2  
**Synonyms:** CLEC4N; CLECSF10; dectin-2; hDECTIN-2  
**Mammalian Cell Selection:** Neomycin  
**Vector:** pCMV6-Entry (PS100001)  
**E. coli Selection:** Kanamycin (25 ug/mL)  
**ORF Nucleotide Sequence:** >RC212780 ORF sequence  
 Red=Cloning site Blue=ORF Green=Tags(s)

TTTTGTAATACGACTCACTATAGGGCGCCGGGAATTCGTCGACTGGATCCGGTACCGAGGAGATCTGCC  
 GCC**CGATCGCC**

ATGATGCAAGAGCAGCAACCTCAAAGTACAGAGAAAAGAGGCTGGTTGTCCCTGAGACTCTGGTCTGTGG  
 CTGGGATTTCCATTGCACTCCTCAGTGCTTGCCTCATTGTGAGCTGTGTAGTAACCTACCATTTTACATA  
 TGGTGAAACTGGCAAAGGCTGTCTGAACACTCATATCATTCAAGTCTCACCTGCTCAGTGAAGGG  
 ACAAGGTGCCAGCCTGGGATGTTGCCAGCTTCTTGGAAGTCATTTGGTTCCAGTTGCTACTTCATTT  
 CCAGTGAAGAGAAGGTTTGGTCTAAGAGTGAGCAGAACTGTGTTGAGATGGGAGCACATTTGGTTGTGT  
 CAACACAGAAGCAGAGCAGAATTTTCATTGTCCAGCAGCTGAATGAGTCATTTTCTATTTTCTGGGGCTT  
 TCAGACCCACAAGGTAATAATAATTGGCAATGGATTGATAAGACACCTTATGAGAAAAATGTCAGATTTT  
 GGCACCTAGGTGAGCCCAATCATTCTGCAGAGCAATGTGCTTCAATAGTCTTCTGGAAACCTACAGGATG  
 GGGCTGGAATGATGTTATCTGTGAAACTAGAAGGAATCAATATGTGAGATGAATAAGATTTACCTA

**ACGCGT**ACGCGGCCGCTCGAGCAGAACTCATCTCAGAAGAGGATCTGGCAGCAAATGATATCCTGGATT  
 ACAAGGATGACGACGATAAGGTTTAA

**Protein Sequence:** >RC212780 protein sequence  
 Red=Cloning site Green=Tags(s)

MMQEQQPQSTEKRWLSLRLWSVAGISIALLSACFIVSCVVYHFTYGETGKRLSELHSYHSSLTCFSEG  
 TKVPAWGCPASWKSFGSSCYFISSEKVVWSKSEQNCVEMGAHLVFNTEAEQNFIVQQLNESFSYFLGL  
 SDPQGNWQWIDKTPYEKNVRFWHLGEPNHSAEQCASIVFWKPTGWGWNDVICETRRNSICEMNKIYL

**TRTRPLEQKLI**SEEDLAANDILDYKDDDDKV



**Chromatograms:** [https://cdn.origene.com/chromatograms/mk6471\\_h02.zip](https://cdn.origene.com/chromatograms/mk6471_h02.zip)

**Restriction Sites:** SgfI-MluI

**Cloning Scheme:**



**ACCN:** NM\_001007033

**ORF Size:** 627 bp

**OTI Disclaimer:** The molecular sequence of this clone aligns with the gene accession number as a point of reference only. However, individual transcript sequences of the same gene can differ through naturally occurring variations (e.g. polymorphisms), each with its own valid existence. This clone is substantially in agreement with the reference, but a complete review of all prevailing variants is recommended prior to use. [More info](#)

**OTI Annotation:** This clone was engineered to express the complete ORF with an expression tag. Expression varies depending on the nature of the gene.

**Components:** The ORF clone is ion-exchange column purified and shipped in a 2D barcoded Matrix tube containing 10ug of transfection-ready, dried plasmid DNA (reconstitute with 100 ul of water).

**Reconstitution Method:**

1. Centrifuge at 5,000xg for 5min.
2. Carefully open the tube and add 100ul of sterile water to dissolve the DNA.
3. Close the tube and incubate for 10 minutes at room temperature.
4. Briefly vortex the tube and then do a quick spin (less than 5000xg) to concentrate the liquid at the bottom.
5. Store the suspended plasmid at -20°C. The DNA is stable for at least one year from date of shipping when stored at -20°C.

**Note:** Plasmids are not sterile. For experiments where strict sterility is required, filtration with 0.22um filter is required.

**RefSeq:** [NM\\_001007033.2](#)

**RefSeq Size:** 1613 bp

RefSeq ORF: 630 bp

Locus ID: 93978

UniProt ID: [Q6EIG7](#)

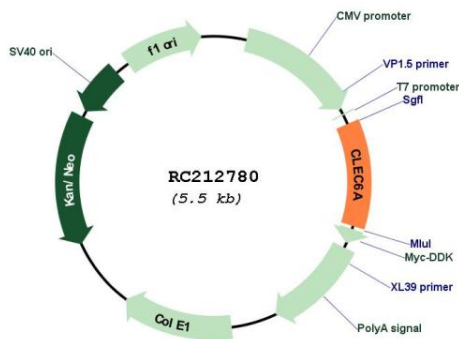
Cytogenetics: 12p13.31

Protein Families: Transmembrane

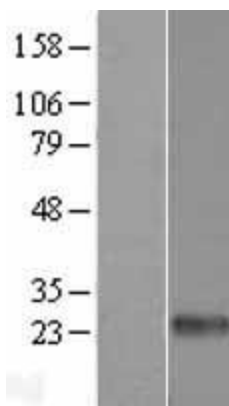
MW: 24 kDa

**Gene Summary:** The protein encoded by this gene is a type II membrane receptor with an extracellular C-type lectin-like domain fold. The extracellular portion binds structures with a high mannose content and has been shown to recognize several pathogens, including *C. elegans*, *S. cerevisiae*, *M. tuberculosis*, *C. neoformans*, and house dust mite. When stimulated, the encoded protein initiates signalling through the CARD9-Bcl10-Malt1 pathway, leading to the induction of cytokines. Two transcript variants encoding different isoforms have been found for this gene. [provided by RefSeq, Dec 2015]

**Product images:**



Circular map for RC212780



Western blot validation of overexpression lysate (Cat# [LY423570]) using anti-DDK antibody (Cat# [TA50011-100]). Left: Cell lysates from untransfected HEK293T cells; Right: Cell lysates from HEK293T cells transfected with RC212780 using transfection reagent MegaTran 2.0 (Cat# [TT210002]).