

Product datasheet for **RC212768**

METTL1 (NM_005371) Human Tagged ORF Clone

Product data:

Product Type: Expression Plasmids
Product Name: METTL1 (NM_005371) Human Tagged ORF Clone
Tag: Myc-DDK
Symbol: METTL1
Synonyms: C12orf1; TRM8; TRMT8; YDL201w
Mammalian Cell Selection: Neomycin
Vector: pCMV6-Entry (PS100001)
E. coli Selection: Kanamycin (25 ug/mL)
ORF Nucleotide Sequence: >RC212768 representing NM_005371
Red=Cloning site Blue=ORF Green=Tags(s)

TTTTGTAATACGACTCACTATAGGGCGGCCGGAATTCGTCGACTGGATCCGGTACCGAGGAGATCTGCC
GCC**CGATCGCC**

ATGGCAGCCGAGACTCGGAACGTGGCCGGAGCAGAGGCCACCAGCCAGAAAGCGCTACTACCGCAAC
GTGCTCACTCCAACCCATGGCGGACCACACGCTGCGCTACCCTGTGAAGCCAGAGGAGATGGACTGGTC
TGAGCTATACCCAGAGTTCTTCGCTCCACTCACTCAAAATCAGAGCCACGATGACCCAAAGGATAAGAAA
GAAAAGAGAGCTCAGGCCAAGTGGAGTTGCAGACATAGGCTGTGGCTATGGTGGCCTGTTAGTGAAC
TGTCCCGCTGTTCCAGACACACTTATCTGGGTCTGGAGATCCGGTGAAGGTCTCAGACTATGTACA
AGACCGGATTCGGGCCCTACGCGCAGCTCCTGCAGGTGGCTCCAGAACATCGCCTGTCTCCGTAGCAAT
GCCATGAAGCACCTTCTAACTTCTTCTACAAGGGCCAGCTGACAAAGATGTTCTTCTTCTCCCGACC
CACATTTCAAGCGGACAAAGCACAAAGTGGCGAATCATCAGTCCCACCCTGCTAGCAGAATATGCCTACGT
GCTAAGAGTTGGGGGGCTGGTGTATACCATAACCGATGTGCTGGAGCTACACGACTGGATGTGCACTCAT
TTCGAAGAGCACCCACTGTTTGGCGTGTGCTCTGGAGACCTGAGTGAAGACCCGTTGTGGGACATC
TAGGCACCTCACTGAGGAGGGGAAGAAAGTTCTACGTAATGGAGGAAGAATTTCCAGCCATCTCCG
AAGAATAACAAGATCCCGTCTCCAGGCAGTGACCTCCAAACAGCCTGCCTGGTCAC

ACGCGTACGCGGCCGCTCGAGCAGAAACTCATCTCAGAAGAGGATCTGGCAGCAAATGATATCCTGGATT
ACAAGGATGACGACGATAAGGTTTAA



[View online »](#)

Protein Sequence: >RC212768 representing NM_005371
 Red=Cloning site Green=Tags(s)

MAAETRNVAGAEAPPPQKRYRQRAHSNPMADHTLRYPVKPEEMDWSLEYEFFAPLTQNSHDDPKDKK
 EKRAQAQVEFADIGCGYGLLVELSPLFPDTLILGLEIRVKVSDYVQDRIRALRAAPAGGFQNIACLRSN
 AMKHLPNFFYKQLTKMFFLFPDPHFKRTRKHKWRIISPTLLAEYAVVLRVGGLVYITDVLELHDWMCTH
 FEEHPLFERVPLEDLSEDPVVHGLGTSTEEGKKVLRNGGKNFPAIFRRIQDPVLQAVTSQTSPLPGH

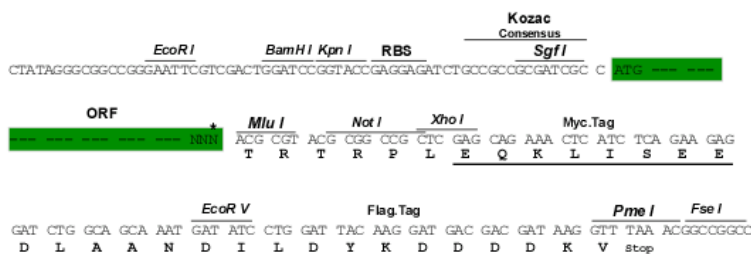
TRTRPLEQKLISEEDLAANDILDYKDDDDKV

Chromatograms: https://cdn.origene.com/chromatograms/mk8022_h06.zip

Restriction Sites: SgfI-MluI

Cloning Scheme:

Cloning sites used for ORF Shuttling:



* The last codon before the Stop codon of the ORF

ACCN: NM_005371

ORF Size: 828 bp

OTI Disclaimer: The molecular sequence of this clone aligns with the gene accession number as a point of reference only. However, individual transcript sequences of the same gene can differ through naturally occurring variations (e.g. polymorphisms), each with its own valid existence. This clone is substantially in agreement with the reference, but a complete review of all prevailing variants is recommended prior to use. [More info](#)

OTI Annotation: This clone was engineered to express the complete ORF with an expression tag. Expression varies depending on the nature of the gene.

Components: The ORF clone is ion-exchange column purified and shipped in a 2D barcoded Matrix tube containing 10ug of transfection-ready, dried plasmid DNA (reconstitute with 100 ul of water).

Reconstitution Method:

1. Centrifuge at 5,000xg for 5min.
2. Carefully open the tube and add 100ul of sterile water to dissolve the DNA.
3. Close the tube and incubate for 10 minutes at room temperature.
4. Briefly vortex the tube and then do a quick spin (less than 5000xg) to concentrate the liquid at the bottom.
5. Store the suspended plasmid at -20°C. The DNA is stable for at least one year from date of shipping when stored at -20°C.

RefSeq: [NM_005371.6](#)

RefSeq Size: 1743 bp

RefSeq ORF: 831 bp

Locus ID: 4234

UniProt ID: [Q9UBP6](#)

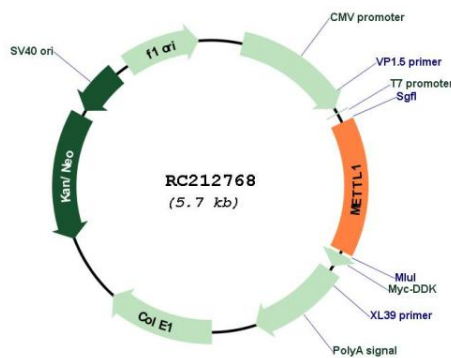
Cytogenetics: 12q14.1

Protein Families: Druggable Genome

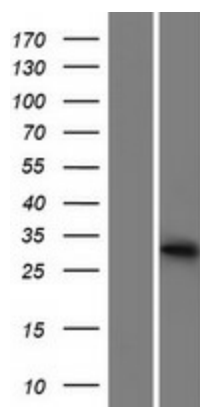
MW: 31.3 kDa

Gene Summary: This gene is similar in sequence to the *S. cerevisiae* YDL201w gene. The gene product contains a conserved S-adenosylmethionine-binding motif and is inactivated by phosphorylation. Alternative splice variants encoding different protein isoforms have been described for this gene. A pseudogene has been identified on chromosome X. [provided by RefSeq, Jul 2008]

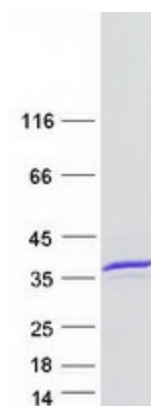
Product images:



Circular map for RC212768



Western blot validation of overexpression lysate (Cat# [LY417349]) using anti-DDK antibody (Cat# [TA50011-100]). Left: Cell lysates from untransfected HEK293T cells; Right: Cell lysates from HEK293T cells transfected with RC212768 using transfection reagent MegaTran 2.0 (Cat# [TT210002]).



Coomassie blue staining of purified METTL1 protein (Cat# [TP312768]). The protein was produced from HEK293T cells transfected with METTL1 cDNA clone (Cat# RC212768) using MegaTran 2.0 (Cat# [TT210002]).