

## Product datasheet for RC212767

### SHPRH (NM\_001042683) Human Tagged ORF Clone

#### Product data:

Product Type:	Expression Plasmids
Product Name:	SHPRH (NM_001042683) Human Tagged ORF Clone
Tag:	Myc-DDK
Symbol:	SHPRH
Synonyms:	bA545I5.2
Mammalian Cell Selection:	Neomycin
Vector:	pCMV6-Entry (PS100001)
E. coli Selection:	Kanamycin (25 ug/mL)
ORF Nucleotide Sequence:	>RC212767 representing NM_001042683 Red=Cloning site Blue=ORF Green=Tags(s)

TTTTGTAATACGACTCACTATAGGGCGGCCGGAATTCGTCGACTGGATCCGGTACCGAGGAGATCTGCC  
GCC**CGATCGCC**

ATGAGCAGCCGACGAAACGTGCTCCTCCAGTGAGGGTAGATGAGGAAAAGAGGCAGCAGCTTCATTGGA  
ATATGCATGAGGACAGAAGGAATGAACCTATCATCATAAGTGATGATGACGAGCAGCCCTGCCAGGTTC  
AGATACCTCTTCTGCTCATTATATCATTCTAAGTGATAGTCTAAAGGAAGAAGTGGCTCACAGAGATAAG  
AAGAGGTGTTCAAAGTGGTGGCTTCTCAAACCAATTGAAAAAGAAGAGACTGTTGGTATTTTTCC  
CTTTGCTGTAAAGTTAAATATTGTGATTTCTCCCTATCATTGATAATTCCTGAAAGCATTCTAGG  
AGAATTAACCTTTCAGCTTCTTCTGCACAGAGTTAATTGAAAAATTTCCGAAAGGAGTATTACATTG  
ATGAGTTCAGAGTCAAGCAATCAGTTCCTGATTTATGTTTCATTCAAAGGTGAAGATGTAGAGAAACAAA  
AAAAAGAACCAGTGAATTTGTGACAAGGGTATTCTGGTGGAGTCATCCTTCAGTGGTGAATGTTAGA  
AGATTTGGGGTGGCTACAAAAGAAGAGAAGAATAAACTCTATCAGAAACCAGAAGGAAATCACATTATC  
AAGGTTGGAATTTATCTTTGGAAGCTGGCCTAGCAAACTAGACTTCTTGAGTGATGCAAAATCAAGAA  
TGAAAAAGTTCATCAGCTCATGAAGAAAGTAAATGGAAAAGTTACACAATCTATTATCCAGATGTGTT  
GGAAGAGGATGAAGATGATCCGGAGAGTGAGCCAGAGGGACAAGACATTGACGAGCTGTATCACTTTGTG  
AAACAAACACATCAGCAAGAAACGCAGTCCATCCAAGTGGATGTCAGCATCCTGCATTGATCCCTGTGT  
TGAGACCCTACCAAAGAGAGGCTGTCAATTGGATGCTACAACAAGAGTGTTCAGAAGCAGTCCCTGCTAC  
TGAAAGTGCCCTGCACCTTCTATGGCGAGAGATTGTTACATCTGAGGGTCTGAAACTCTACTATAATCCA  
TATACAGGCTGCATCATTCTGAGTACCCAAATCTGGGCCGAGTTGCTTGGTGAATTTAGCAGATG  
AGATGGGTCTTGGAAAGACAGTGGAGGTTTTGGCTCTGATTCTGACACATACTCGACAAGATGTCAAGCA  
AGATGCTCTCACTCTCCGAGGGAAAAGTGGTGAATTTTTATTCCGTCACATTATTTGGAGGAAAA  
CTGAAAAAGACAGAAATCCAGAATATCGAATTTGAACCAAAAGAAAAGTTCAATGCCCTCTACACGTG  
TGATGATACTGACAGCTGTGAAAGAAATGAATGGAAAAAAGGAGTGCCATCCTTTCCATCTATAAGTA  
TGTCAGTCTATATAGATACGATGTTCAACGGAACAGGAGTCTTTGAAACGGATGCTGAAATGTTTA



[View online »](#)

ATTTTTGAAGGTCTCGTGAACAGATCAAAGGCCATGGTTTTCTGGGACTTTTACATTGGGAAAGAATT  
 ACAAGGAAGAGGATATATGTGATAAAAACAAAAAGCAGGCAGTAGGGAGTCCAAGGAAAATTCAGAAAAGA  
 AACTAGAAAATCAGGGAACAAGGACACAGATTCTGAATACTTGCCATCAGACACCTCTGATGATGATGAT  
 GATCCTTACTATTATTATAAGTCCAGGAGAAAATCGCAGTAAATTGAGGAAAAAGCTTGTCCATCCA  
 CAAAAAAGGAAAAAGTCAACCATTTATCAATCCCATTGATCACAAGGCTACTGTCCAGCTACTAGCGACTC  
 TGGAACTGATGTTGCTATGTCTAAAAGTACATGTATCTCTGAATTCACCAAGAACATGAAACAGAG  
 GACTGGCTGAATCTCTAAATCATGCTGATGATGATGATGATGATGATGATGATGATGATGATGATGATGAT  
 CCTCTGATTACCCTTTGAGTGTATATGTGGTGAACCTTGATCAGATAGATCGTAAGCCTCGTGTCAATG  
 CCTGAAGTGTACCTGTGGCAACATGCAAAGTGTGTAATTATGATGAGAAAAATCTGAAGATCAAGCCT  
 TTTTACTGCCCCACTGCCTTGTGCAATGGAACCAAGTGTCAACAAGAGCAACTCTGATCATCTCTCCAA  
 GTTCCATCTGTCACCAGTGGGTGGATGAGATCAACAGGCATGTGAGGTCGTATCTCTTCGAGTCTTGGT  
 ATATCAAGGAGTGAAGAAAGATGGCTTTTACAACCTCATTTTTTGGCAGAACAGGATATAGTTATCATT  
 ACCTATGATGACTGCGTTCAGAATTAATTATGTCGATATCCCACATAGCAATAGTGAGGATGGGCGTC  
 GCCTACGGAACAGAGCGCTATATGGCTATCCCAGCCCCCTGGTAGCTGTGGAGTGGTGGAGGATCTG  
 CCTTGATGAAGCTCAGATGGTTGAGTGTCCACAGTAAAAGCTGCAGAAATGGCCACGCTTTGAGTGGG  
 ATTAATCGATGGTGTATCAGTGGCACTCCAGTACAGAGAGGATTAGAGGATCTTTTTGGGTTAGTGGTCT  
 TTCTTGGTATTGAACCTTACTGTGTCAAACACTGGTGGGTTTCGACTTCTCTATCGGCCTTACTGCAAGAA  
 GAATCCTCAGCATCTCTACAGCTTATTGCCAAGATACTGTGGAGGTCTGCAAAGAAAGATGTGATTGAC  
 CAAATCCAAATACCACCACAAACCGAAGAAATACACTGGCTCCACTTTTCTCCAGTGGAAAGGCATTTCT  
 ATCACCCTCAGCATGAGGTGTGCTGCCAGGATGTGGTGGTAAAACCTCAGGAAGATTTCTGACTGGGCTCT  
 GAAGCTCAGCAGCTAGACAGAAGGACTGTCACCTCTATCCTGTATCCATTGCTGAGGCTCAGACAGGCC  
 TGCTGTCAACCCACAGGCTGTTGCTGGAGAGTCTTGGCACTCCTGACTCCTGACTGACTGACTGACTGACT  
 TGCTGACATCTTTCAGAGAAGAAATGTGGAAGTGAATGTGAAGAAGCAGCATCGACAGCTAGTTTGTGCTCT  
 CAATGGCTTAGCAGGCATTATATTAAAGGTGAGTATGCCTTGGCAGCAGAATTGTACAGAGAAGTG  
 TTGCGCTCCTCGGAGGAACACAAAGGAAAACTCAAACCTGATTCACTTCAAAGACTTCATGCTACCCATA  
 ACTTGATGGAATTGTTGATAGCCAGGCACCCAGGGATACCACCTACCTTGCCTGATGGCCGACTTGAGGA  
 AGAGGCCAAACAGCTGCGAGAGCACTACATGAGCAAGTGAATACAGAAGTTGCTGAAGCCAGCAAGCT  
 TTATATCCTGTGCAGCAGACCATCCATGAGCTTCAAAGAAAGATTCAATTCTAATTCTCCTGGTGGCTAA  
 ATGTGATCCACAGAGCAATAGAATTTACTATTGATGAGGAGCTAGTTCAGCGAGTGCAGAAATGAAATAAC  
 CAGCAACTACAAGCAACAACTGGCAAGCTTTCTATGTCAGAGAAGTCCGCTGATGAGAGGCTCTTCAG  
 TTCTTACTTACAACACAAATGGAAGAGCTAAATAAATGCCAGAAGCTAGTAAGAGAGGCTGTAATAAAC  
 TGGAGGGACCTCCATCTCGTAATGTTATTGAGTCTGCAACAGTCTGTACCTCCGACCAGCCAGACTTCC  
 TCTCAACTGCTGTGCTTTTTGTAAGCTGATGAATTGTTACAGAGTATGAATCAAAGCTATTTTCCAAC  
 ACAGTCAAAGGCCAGACTGCAATATTTGAGGAGATGATAGAAGATGAAGAAGGACTGGTGGATGATCGAG  
 CACCTACCACCACCCGGGCTCTCTGGGCAATAAGTGAGACAGAGCGATCTATGAAAGCAATACTATCATT  
 TGCAAAATCACATAGGTTTGTGTTGAATTTGTTGATGAAGGAAGCACTTCAATGGATCTCTTGAAGCA  
 TGGAAGAAGGAATATAAGTTGCTTCATGAATATTGGATGGCTCTGAGGAATCGTGTGTCTGCTGTTGATG  
 AACTTGAATGGCTACAGAACGACTAAGAGTGCCTGATCCTAGGGAGCCAAAGCCATAATCCGCTGTTCT  
 TCATATCATTGAACCACATGAGGTAGAACAAACCGAATAAACTACTAAATGATAAAGCTGTTGCTACA  
 TCACAGCTTCAGAAAAAACTTGGCAGCTTCTTTACCTAACTAATTTGGAGAAGTCTCAAGATAAAACAT  
 CGGGAGGTGTTAATCCAGAACCTTGCCCAATCTGTGCTCGACAGCTAGGAAAAACAGTGGGCGTACTGAC  
 CTGTGGTCACTGTTTCTGTAATGAATGCAATTTCTATAATTATTGAACAATACAGCGTGGGATCTCACAGA  
 AGCTCCATTAAGTGTGCAATCTGCCGCCAGACCACATCTCACAAAGAAATCTCGTATGTCTTTACCTCAG  
 AGAAAGCAAACAGGAGGAGGACATCCCTGTGAAGGGCAGCCATTCTACAAAAGTGAAGCTGTGGTCAG  
 AACTCTGATGAAAATACAGCTTAGAGATCCAGGGCCAAAGCACTCGTTTTCTCAACGTGGCAAGATGTA  
 TTAGATATTTTCAAAGCTCTTACTGACAACAACATGGAATTTGCACAAATCAGTCGTGTTAAGACAT  
 TTCAGGAGAACCTTTCAGCATTTAAACGTGATCCCAAAATCAATATTTTGTGCTGCTGCCCCGACACAGG  
 TTCTAATGGATTAATATCATTGAAGCAACTCATGTTCTTGGTGGAGCCCATATTGAACCTGCCCAT  
 GAGCTTACAGCCATAGGGAGGGTGCACCGAATTGGACAGACAAAACCTACTATTGTACACAGATTCTTAA  
 TTAAGGCAACATAGAAGAAAGAAATGCAGGCAATGCTGAAAACCTGCTGAGAGAAGTCACACGAACTCATC  
 AGCAAAGCATTACAGAGCCTCTGTCTTACTGTGGCTGACCTGGCAGACCTATTTACAAAGAACTGAA  
 GAGCTTGAA

ACGCGTACGCGGCCGCTCGAGCAGAACTCATCTCAGAAGAGGATCTGGCAGCAATGATATCCTGGATT  
ACAAGGATGACGACGATAAGGTTTAA

**Protein Sequence:**

>RC212767 representing NM\_001042683  
Red=Cloning site Green=Tags(s)

MSSRRKRAPPVVRVDEEKRQQLHWNMHEDRRNEPIISDDDEQPCPGSDTSSAHYIILSDSLKEEVAHRDK  
KRCskVVSFSKPIEKEETVGFISPLSVKLNIVISPYHFDNSWKAFLGELTLQLLPAQSLIENFSERSITL  
MSESSNQFLIYVHSGEDVEKQKKEPMSICDKGILVSSFSGEMLEDLQKRRRIKLQKPEGNHII  
KVGIYLLLEAGLAKLDFLSDANSRMKFKFNLMKKVMEKLHNSIIPDVEEDEDPESEPEGQDIDELYHFV  
KQTHQETQSIQVDVQHPALIPVLRPYQREAVNWMLQQECFRSSPATESALHFLWREIVTSEGLKLYNPN  
YTGCIIREYPNSGPFLLGGILADEMGLGKTVEVLALILTHTRQDVQDALTLPEGKVVNYFIPSHYFGGK  
LKKTEIQNIEFEPKEKVCPPTRVMILTAVKEMNGKKGVSILSIYKYVSSIYRYDVQRNRSLLKRMKCL  
IFEGLVKQIKGHGFSGTFTLGKNYKEEDICDKTKKQAVGSPRKIQKETRSGNKDTSSEYLPDTSDDDD  
DPYYYYYKSRNRSLRKLKLPSTKKGKSQPFINPDSQGHCPATSDSGITDVAMSKSTCISEFNQEHETE  
DCAESLNHADSDVPPSNTMSPFNTSDYRFECICGELDQIDRKPVRVQCLKCHLWQHAKCVNYDEKLNLIKIP  
FYCPHCLVAMEPVSTRATLIISPSICHQWDEINRHVRSSSLRVLVYQGKKGDFLQPHFLAEQDIVII  
TYDVLRSSELNYVDIPHSNSEDGRRLRNQRYMAIPSPLVAVEWWRICLDEAQMVECPTVKAEMAQRLSG  
INRWICISGTPVQGLDFGLVFLGIEPYCVKHWVRLLYRYPYCKKNPQHLYSYIAKILWRSAKKDVID  
QIQIPPQTTEEIHWHFSPVERHFYHRQHEVCCQDVVVKLRKISDWALKLSSLDRTVTSTILYPLRLRQA  
CCHPQAVRGEFLPLQKSTMTMEELLTSLQKKGTECEEAHRQLVCALNGLAGIHIKGEYALAAELYREV  
LRSSEEHKGLKTDLSLQRLHATHNLMELLIARHPGIPPTLRDGRLEEEAKQLREHYMSKCNTEVAEAQQA  
LYPVQQTITHELQRKIHSNSPWWLVNVIHRAIEFTIDEELVQVRNEITSNYKQQTGKLSMSEKFRDCRGLQ  
FLLTTQMEELNKCQKLVREAVKNLEGPSPRNIVIESATVCHLRPARLPLNCCVFCKADELFTYESKLFNS  
TVKGQTAIFEEMIEDEEGLVDDRPTTTRGLWAISETERSMKAILSFASKSHRFDVEFVDEGSTSMDLFEA  
WKKEYKLLHEYWMALRNRVSAVDELAMATERLRVRDPREPKNPPVLHIIEPHEVEQNRKLLNDKAVAT  
SQLQKKGQLLYLTNLEKSQDKTSGGVNPEPCPCARQLGKQWAVLTCGHCFNCECISIIIEQYSVGSHR  
SSIKCAICRQTTSHKEISYVFTSEKANQEEDIPVKGSHSTKVEAVVRTLMKIQLRDPGAKALVFSTWQDV  
LDIISKALTDNNMEFAQISRVKTFQENLSAFKRDQPINILLPLHTGSNGLTIEATHVLLVEPILNPAH  
ELQAIGRVHRIGQTKPTIVHRFLIKATIEERMQAMLKTAERSHTNSSAKHSEASVLTADLADLFTKETE  
ELE

TRTRPLEQKLISEEDLAANDILDYKDDDDKV

**Chromatograms:**

[https://cdn.origene.com/chromatograms/mk8103\\_e06.zip](https://cdn.origene.com/chromatograms/mk8103_e06.zip)

**Restriction Sites:**

Sgfl-MluI

**Cloning Scheme:**



**ACCN:** NM\_001042683

**ORF Size:** 5049 bp

**OTI Disclaimer:** The molecular sequence of this clone aligns with the gene accession number as a point of reference only. However, individual transcript sequences of the same gene can differ through naturally occurring variations (e.g. polymorphisms), each with its own valid existence. This clone is substantially in agreement with the reference, but a complete review of all prevailing variants is recommended prior to use. [More info](#)

**OTI Annotation:** This clone was engineered to express the complete ORF with an expression tag. Expression varies depending on the nature of the gene.

**Components:** The ORF clone is ion-exchange column purified and shipped in a 2D barcoded Matrix tube containing 10ug of transfection-ready, dried plasmid DNA (reconstitute with 100 ul of water).

**Reconstitution Method:**

1. Centrifuge at 5,000xg for 5min.
2. Carefully open the tube and add 100ul of sterile water to dissolve the DNA.
3. Close the tube and incubate for 10 minutes at room temperature.
4. Briefly vortex the tube and then do a quick spin (less than 5000xg) to concentrate the liquid at the bottom.
5. Store the suspended plasmid at -20°C. The DNA is stable for at least one year from date of shipping when stored at -20°C.

**RefSeq:** [NM\\_001042683.3](#)

**RefSeq Size:** 7345 bp

**RefSeq ORF:** 5052 bp

**Locus ID:** 257218

**UniProt ID:** [Q149N8](#)

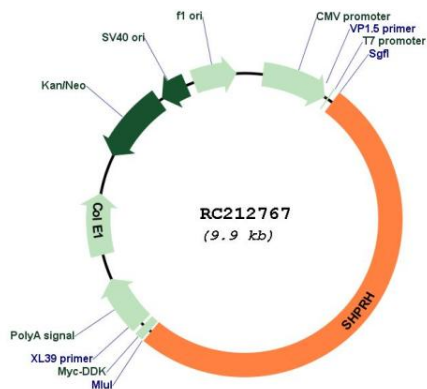
**Cytogenetics:** 6q24.3

**Protein Families:** Druggable Genome

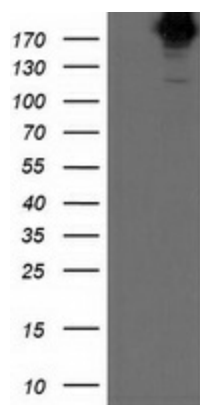
**MW:** 193.1 kDa

**Gene Summary:** SHPRH is a ubiquitously expressed protein that contains motifs characteristics of several DNA repair proteins, transcription factors, and helicases. SHPRH is a functional homolog of *S. cerevisiae* RAD5 (Unk et al., 2006 [PubMed 17108083]).[supplied by OMIM, Mar 2008]

**Product images:**



Circular map for RC212767



HEK293T cells were transfected with the pCMV6-ENTRY control (Cat# [PS100001], Left lane) or pCMV6-ENTRY SHPRH (Cat# RC212767, Right lane) cDNA for 48 hrs and lysed. Equivalent amounts of cell lysates (5 ug per lane) were separated by SDS-PAGE and immunoblotted with anti-SHPRH(Cat# [TA501443]).