

## Product datasheet for **RC212765**

### **BAG5 (NM\_001015048) Human Tagged ORF Clone**

#### **Product data:**

Product Type:	Expression Plasmids
Product Name:	BAG5 (NM_001015048) Human Tagged ORF Clone
Tag:	Myc-DDK
Symbol:	BAG5
Synonyms:	BAG-5
Mammalian Cell Selection:	Neomycin
Vector:	pCMV6-Entry (PS100001)
E. coli Selection:	Kanamycin (25 ug/mL)



[View online »](#)

**ORF Nucleotide Sequence:**

>RC212765 ORF sequence  
 Red=Cloning site Blue=ORF Green=Tags(s)

TTTTGTAATACGACTCACTATAGGGCGGCCGGAATTCGTCGACTGGATCCGGTACCGAGGAGATCTGCC  
 GCC**CGCATCGCC**

ATGCGTTTCCATTGGTTACCCACCTTGAGCGAGCCGTTTGTATAGAAACCAAGAGCTTGAACGTGCATTA  
 GGCCGTTGTGGACTCCCAGTGGGAGTGCTGTGAAACTGAACACAACAAAAGTATGGATATGGGAAACCA  
 ACATCCTTCTATTAGTAGGCTTCAGGAAATCCAAAAGGAAGTAAAAAGTGTAGAACAGCAAGTTATCGGC  
 TTCAGTGGTCTGTGAGATGACAAGAATTACAAGAACTGGAGAGGATTCTAACAAAAACAGCTTTTTGAAA  
 TAGACTCTGTAGATACTGAAGGAAAAGGAGATATTCAGCAAGCTAGGAAGCGGCAGCACAGGAGACAGA  
 ACGTCTTCTCAAAGAGTTGGAGCAGAATGCAAACCAACCCACCCGATTGAAATACAGAACATTTTTGAG  
 GAAGCCCAGTCCCTCGTGAAGAGAAAAATTGTGCCATTTATAATGGAGGCAACTGCGTAACTGATGAGT  
 TTGAAGAAGGCATCCAAGATATCATTCTGAGGCTGACACATGTTAAAACCTGGAGGAAAAATCTCCTTGGC  
 GAAAGCAAGGTATCACACTTTAACCAAAATCTGTGCGGTGCAAGAGATAATCGAAGACTGCATGAAAAAG  
 CAGCCTTCCCTGCGCTTCCGAGGATGCACATCCTTCCGTTGCCAAAATCAACTTCGTGATGTGTGAGG  
 TGAACAAGGCCCGAGGGTCTGATTGCACTTCTGATGGGTGTGAACAACAATGAGACCTGCAGGCACTT  
 ATCCTGTGTGCTCTCGGGCTGATCGCTGACCTGGATGCTCTAGATGTGTGCGGCCGGACAGAAATCAGA  
 AATTATCGGAGGGAGGTAGTAGAAGATACAACAAATTATTGAAATATCTGGATTTGGAAGAGGAAGCAG  
 ACACAATAAAGCATTGACCTGAGACAGAATCATTCCATTTAAAAATAGAAAAGTCCCAAGAGAAT  
 GAGAGAAAATAAAAAATGAACTTCTCAAGCACAAAACCTTCTGAATTGTACCTGAGCTCCAAAACAGAA  
 TTGCAGGGTTAATTGGACAGTTGGATGAGTAAGTCTTGAAAAAACCCCTGCATCCGGGAAGCCAGGA  
 GAAGAGCAGTGATCGAGGTGCAAACTCTGATCACATATATTGACTTGAAGGAGGCCCTTGAGAAAAGAAA  
 GCTGTTTGCTTGTGAGGAGCACCCATCCATAAAGCCGCTGGAACGCTCTTGGAAAACCTGTCTGAGATC  
 CAGGGAGAAGTTCTTTTATTTGATGAAAATCGAACCGATAAAGAACTACATCCGGCTGGAAGAGCTGCTCA  
 CCAAGCAGCTGCTAGCCCTGGATGCTGTTGATCCGAGGGAGAAGAGAAGTGAAGGCTGCCAGGAAACA  
 AGCTGTGAGGCTTGCAGAGAATATTCTCAGCTATCTCGACCTGAAATCTGATGAATGGGAGTAC

**ACGCGT**ACGCGGCCGCTCGAGCAGAAACTCATCTCAGAAGAGGATCTGGCAGCAATGATATCTGGATT  
 ACAAGGATGACGACGATAAGGTTTAA

**Protein Sequence:**

>RC212765 protein sequence  
 Red=Cloning site Green=Tags(s)

MRFHHLPTLSEPFDRNQELET CIRPLWTPSGSACETEHNSMDMGNQHPSISRLQEIQKEVKSVEQQVIG  
 FSGLSDDKNYKKLERILTKQLFEIDSVDTEGKGDIIQARKRAAQETERLLKELEQNANHPHRIEQNIFE  
 EAQSLVREKIVPFYNGGNCVTDEFEEIQDIILRLTHVKTGGKISLRKARYHTLTKICAVQEIIEDCMKK  
 QPSLPLEDAHPSYAKINFVMCEVNKARGVLIALLMGVNNNETCRHLSVLSGLIADLDALDVCGRTEIR  
 NYRREVVEDINKLLKYLDLEEEADTTKAFDLRQNHSLKIEKVLKRMREIKNELLQAQNPSELYLSSKTE  
 LQGLIGQLDEVSLKNPCIREARRRAVIEVQTLITYIDLKEALEKRKLFACEEHPSHKAVWVNLGNLSEI  
 QGEVLSFDGNRTDKNYIRLEELLTKQLLALDAVDPQGEKCKAARKQAVRLAQNILSYLDLKSDEWEY

**TR**TRPLEQKLISEEDLAANDILDYKDDDDKV

**Chromatograms:**

[https://cdn.origene.com/chromatograms/mk6091\\_f02.zip](https://cdn.origene.com/chromatograms/mk6091_f02.zip)

**Restriction Sites:**

Sgfl-MluI

**Cloning Scheme:**


**ACCN:** NM\_001015048

**ORF Size:** 1467 bp

**OTI Disclaimer:** The molecular sequence of this clone aligns with the gene accession number as a point of reference only. However, individual transcript sequences of the same gene can differ through naturally occurring variations (e.g. polymorphisms), each with its own valid existence. This clone is substantially in agreement with the reference, but a complete review of all prevailing variants is recommended prior to use. [More info](#)

**OTI Annotation:** This clone was engineered to express the complete ORF with an expression tag. Expression varies depending on the nature of the gene.

**Components:** The ORF clone is ion-exchange column purified and shipped in a 2D barcoded Matrix tube containing 10ug of transfection-ready, dried plasmid DNA (reconstitute with 100 ul of water).

**Reconstitution Method:**

1. Centrifuge at 5,000xg for 5min.
2. Carefully open the tube and add 100ul of sterile water to dissolve the DNA.
3. Close the tube and incubate for 10 minutes at room temperature.
4. Briefly vortex the tube and then do a quick spin (less than 5000xg) to concentrate the liquid at the bottom.
5. Store the suspended plasmid at -20°C. The DNA is stable for at least one year from date of shipping when stored at -20°C.

**RefSeq Size:** 4866 bp

**RefSeq ORF:** 1344 bp

**Locus ID:** 9529

**UniProt ID:** [Q9UL15](#)

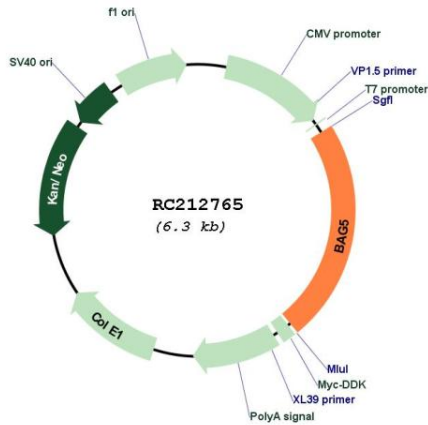
**Cytogenetics:** 14q32.33

**Protein Families:** Druggable Genome

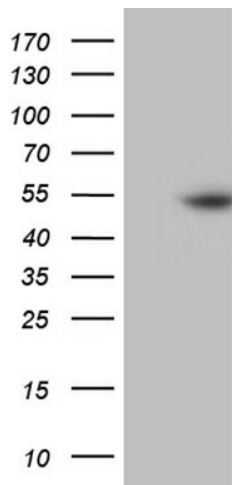
**MW:** 56 kDa

**Gene Summary:** The protein encoded by this gene is a member of the BAG1-related protein family. BAG1 is an anti-apoptotic protein that functions through interactions with a variety of cell apoptosis and growth related proteins including BCL-2, Raf-protein kinase, steroid hormone receptors, growth factor receptors and members of the heat shock protein 70 kDa family. This protein contains a BAG domain near the C-terminus, which could bind and inhibit the chaperone activity of Hsc70/Hsp70. Three transcript variants encoding two different isoforms have been found for this gene. [provided by RefSeq, Jul 2008]

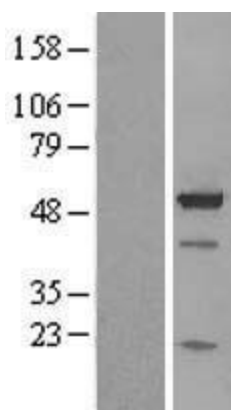
**Product images:**



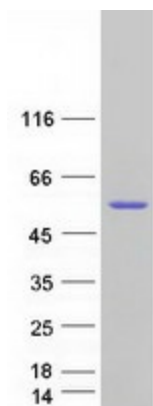
Circular map for RC212765



HEK293T cells were transfected with the pCMV6-ENTRY control (Cat# [PS100001], Left lane) or pCMV6-ENTRY BAG5 (Cat# RC212765, Right lane) cDNA for 48 hrs and lysed. Equivalent amounts of cell lysates (5 ug per lane) were separated by SDS-PAGE and immunoblotted with anti-BAG5 (Cat# [TA811740])(1:2000). Positive lysates [LY425379] (100ug) and [LC425379] (20ug) can be purchased separately from OriGene.



Western blot validation of overexpression lysate (Cat# [LY423114]) using anti-DDK antibody (Cat# [TA50011-100]). Left: Cell lysates from untransfected HEK293T cells; Right: Cell lysates from HEK293T cells transfected with RC212765 using transfection reagent MegaTran 2.0 (Cat# [TT210002]).



Coomassie blue staining of purified BAG5 protein (Cat# [TP312765]). The protein was produced from HEK293T cells transfected with BAG5 cDNA clone (Cat# RC212765) using MegaTran 2.0 (Cat# [TT210002]).