

Product datasheet for **RC212764**

ARSI (NM_001012301) Human Tagged ORF Clone

Product data:

Product Type:	Expression Plasmids
Product Name:	ARSI (NM_001012301) Human Tagged ORF Clone
Tag:	Myc-DDK
Symbol:	ARSI
Synonyms:	ASI; SPG66
Mammalian Cell Selection:	Neomycin
Vector:	pCMV6-Entry (PS100001)
E. coli Selection:	Kanamycin (25 ug/mL)



[View online »](#)

ORF Nucleotide Sequence:

>RC212764 ORF sequence
 Red=Cloning site Blue=ORF Green=Tags(s)

TTTTGTAATACGACTCACTATAGGGCGGCCGGGAATTCGTCGACTGGATCCGGTACCGAGGAGATCTGCC
 GCC**CGGATCGCC**

ATGCACACCCCTACTGGCTTCTCCCTGGTCAGCCTGCTCAGCTTCGGCTACCTGTCTGGGACTGGGCCA
 AGCCGAGCTTCGTGGCCACGGGCCCGGGGAGGCTGGCGAGCAGCCCTCGGCCGCTCCGCCCCAGCCTCC
 CCACATCATCTTCATCCTCACGGACGACCAAGGCTACCACGACGTGGGCTACCATGGTTCAGATATCGAG
 ACCCTACGCTGGACAGGCTGGCGGCCAAGGGGTCAAGTTGGAGAATTATTACATCCAGCCCATCTGCA
 CGCCTTCGCGGAGCCAGCTCCTCACTGGCAGGTACCAGATCCACACAGGACTCCAGCATTCCATCATCCG
 CCCACAGCAGCCCAACTGCCTGCCCTGGACCAGGTGACACTGCCACAGAAGCTGCAGGAGGCAGTTAT
 TCCACCCATATGGTGGGCAAGTGGCACCTGGGCTTCTACCGAAGGAGTGTCTGCCACCCGTCGGGGCT
 TCGACACCTTCTGGGCTCGCTCAGGGCAATGTGGACTATTACCTATGACAACCTGTGATGGCCAGG
 CGTGTGGCGCTTCGACCTGCACGAGGTGAGAATGTGGCTGGGGCTCAGCGGCCAGTACTCCACTATG
 CTTTACGCCCAGCGGCCAGCCATATCCTGGCCAGCCACAGCCCTCAGCGTCCCCTTCTCCTATGTGG
 CCTTCCAGGCAGTACACACACCCCTGCAGTCCCCTCGTGAGTACCTGTACCGCTACCGCACCATGGGCAA
 TGTGGCCCGCGGAAGTACGCGGCCATGGTGACCTGCATGGATGAGGCTGTGCGCAACATCACCTGGGCC
 CTCAAGCGCTACGGTTTCTACAACAACAGTGTCTCATCTTCTCCAGTGACAATGGTGGCCAGACTTTCT
 CGGGGGCAGCAACTGGCCGCTCCGAGGACGCAAGGGCACTTATTGGGAAGTGGCGTGGGGCCCTAGG
 CTTTGTCCACAGTCCCCTGCTCAAGCGAAAGCAACGGACAAGCCGGGCACTGATGCACATCACTGACTGG
 TACCCGACCCTGGTGGTCTGGCAGTGGTACCACCTCAGCAGCCGATGGGCTAGATGGCTACGACGTGT
 GGCCGGCCATCAGCGAGGGCCGGCCCTCACCACGACGAGATCTGCACAACATTGACCCACTACAA
 CCATGCCACAGCATGGCTCCCTGGAGGGCCGGCTTTGGCATCTGGAACACCGCCGTGCAGGCTGCCATCCGC
 GTGGGTGAGTGAAGCTGCTGACAGGAGACCCCGCTATGGCGATTGGATCCCACCGCAGACACTGGCCA
 CCTTCCGGGTAGCTGGTGAACCTGGAACGAATGGCCAGTGTCCGCCAGGCCGTGGTCTTCAACAT
 CAGTGCTGACCCTTATGAACGGGAGGACCTGGCTGGCCAGCGCCCTGATGTGGTCCGACCCCTGCTGGCT
 CGCCTGGCCGAATATAACCGCACAGCCATCCCGGTACGCTACCCAGCTGAGAACCCCGGGCTCATCCTG
 ACTTTAATGGGGTGCTTGGGGCCCTGGGCCAGTGATGAGGAAGAGGAGGAAGAGGAAGGGAGGGCTCG
 AAGCTTCTCCCGGGTCTGCGAAGAAAAATGCAAGATTGCAAGCTTCGATCCTTTTTCCGTAAACTC
 AACACCAGGCTAATGTCCAACGGATC

ACGCGTACGCGGCCGCTCGAGCAGAAACTCATCTCAGAAGAGGATCTGGCAGCAAATGATATCCTGGATT
 ACAAGGATGACGACGATAAGGTTTAA

Protein Sequence:

>RC212764 protein sequence
 Red=Cloning site Green=Tags(s)

MHTLTGFSLVSLLSFGYLSWDWAKPSFVADGPGGEAGEQPSAAPPQPHIIFILTDQGYHDVGYHGSIE
 TPTLDRLAAKGVKLENYYIQPICTPSRSQLLTGRYQIHTGLQHSIIRPQQPNCLPLDQVTLQKLEAGY
 STHMVGKWHLGFYRKECLPTRRGFDTLGSLTGNVDYYTYDNC DGPGVCGFDLHEGENVAWGLSGQYSTM
 LYAQRASHILASHSPQRPLFLYVAFQAVHTPLQSPREYLRYRRTMGNVARRKYAAMVTCMDEAVRNITWA
 LKRYGFYNNSVIIFSSDNGGQTFSGGSNWPLRGRKGTWEGGVRGLGFVHSPLLKRKQRTSRALMHTDW
 YPTLVGLAGGTTSAADGLDGYDVWPAISEGRASPRTEILHNIDPLYNHAQHGSLEGGFGIWNQAAIR
 VGEWKLITGDPGYGDWIPPQTLATFPGSWWNLERMASVRQAVWLFNISADPYEREDLAGQRPDVVRTLLA
 RLAEYNRTAIPVRYPAENPRAHPDFNGGAWGPWASDEEEEEEEGRARSFSRGRKKKCKICKLRSFRKL
 NTRLMSQRI

TRTRPLEQKLISEEDLAANDILDYKDDDDKV

Restriction Sites:

Sgfl-MluI

Cloning Scheme:


ACCN: NM_001012301

ORF Size: 1707 bp

OTI Disclaimer: The molecular sequence of this clone aligns with the gene accession number as a point of reference only. However, individual transcript sequences of the same gene can differ through naturally occurring variations (e.g. polymorphisms), each with its own valid existence. This clone is substantially in agreement with the reference, but a complete review of all prevailing variants is recommended prior to use. [More info](#)

OTI Annotation: This clone was engineered to express the complete ORF with an expression tag. Expression varies depending on the nature of the gene.

Components: The ORF clone is ion-exchange column purified and shipped in a 2D barcoded Matrix tube containing 10ug of transfection-ready, dried plasmid DNA (reconstitute with 100 ul of water).

Reconstitution Method:

1. Centrifuge at 5,000xg for 5min.
2. Carefully open the tube and add 100ul of sterile water to dissolve the DNA.
3. Close the tube and incubate for 10 minutes at room temperature.
4. Briefly vortex the tube and then do a quick spin (less than 5000xg) to concentrate the liquid at the bottom.
5. Store the suspended plasmid at -20°C. The DNA is stable for at least one year from date of shipping when stored at -20°C.

RefSeq: [NM_001012301.4](#)

RefSeq Size: 3225 bp

RefSeq ORF: 1710 bp

Locus ID: 340075

UniProt ID: [Q5FYB1](#)

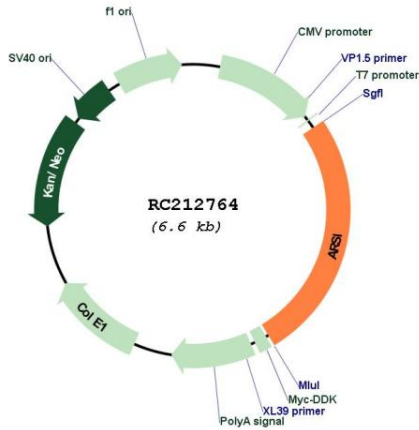
Cytogenetics: 5q32

Protein Families: Druggable Genome, Secreted Protein

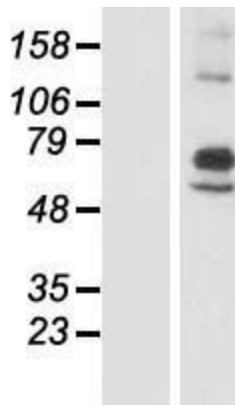
MW: 64 kDa

Gene Summary: This gene encodes a protein that belongs to a large family of sulfatases that hydrolyze sulfate esters and sulfamates. Members of this family play a role in several cellular processes, including hormone synthesis, cell signaling in development and degradation of macromolecules. The protein encoded by this gene is thought to be secreted, and to function in extracellular space. [provided by RefSeq, Jul 2016]

Product images:



Circular map for RC212764



Western blot validation of overexpression lysate (Cat# [LY423321]) using anti-DDK antibody (Cat# [TA50011-100]). Left: Cell lysates from untransfected HEK293T cells; Right: Cell lysates from HEK293T cells transfected with RC212764 using transfection reagent MegaTran 2.0 (Cat# [TT210002]).