

Product datasheet for **RC212759**

MAN1 (LEMD3) (NM_014319) Human Tagged ORF Clone

Product data:

Product Type:	Expression Plasmids
Product Name:	MAN1 (LEMD3) (NM_014319) Human Tagged ORF Clone
Tag:	Myc-DDK
Symbol:	MAN1
Synonyms:	MAN1
Mammalian Cell Selection:	Neomycin
Vector:	pCMV6-Entry (PS100001)
E. coli Selection:	Kanamycin (25 ug/mL)



[View online »](#)

ORF Nucleotide Sequence:

>RC212759 representing NM_014319
 Red=Cloning site Blue=ORF Green=Tags(s)

TTTTGTAATACGACTCACTATAGGGCGGCCGGGAATTCGTCGACTGGATCCGGTACCGAGGAGATCTGCC
 GCC**GCGATCGCC**

ATGGCGGCGGCAGCAGCTTCGGCGCCTCAGCAGCTCTCGGATGAGGAGCTTTTCTCTCAGCTCCGCCGTT
 ACGGCCTGTCTCCCGACCAGTGACGGAGAGCACCCGCCGGTCTACCTCAAGAAGCTGAAGAAGCTTCG
 AGAGGAAGAGCAGCAACAGCACCGGTACAGGGGGCCGCGGCAACAAGACGCGGAACAGTAATAACAATAAC
 ACGGCAGCCGCCACGGTCGCAGCCCGGGACCAGCGCGCGCGGCCGCGGGGATGGGGTCCGGCCGG
 TCTCGGGCAGCTCTCTACTTACGGACTCCTGGGGCCTGTGCCGAATCTCGGCCTCTGGCCAGAGAG
 CCTCTGGGAGGGCCCGGGGCGCTCCGCCGCCCGCGGCTGGCAGCAAAGTGTCTGGGCTTCAGC
 TCGGACGAGTCGGACGTGGAGGCCAGTCCCGGGACCAGCCGGCGCGGGAGGAAAGACCGGGCTT
 CGTCCAGTACCGCGGGCTCAAAGCGCCCGCGGCCCTGGCCGCCAGCGAGGTGACTAACAGCAACTC
 TGCAGAGCGAAGGAAGCCCACTCGTGGTGGGGGCCAGGAGGCCGGCGGCCCGAGCTGCAGACCCCG
 CCGGGGAAAGATGGAGCAGTGGAGGACGAGGAAGGGAGGGAGAGGACGGTGAGGAGAGGGACCCGAGA
 CCGAGGAGCCGCTCTGGGCGAGCCGACCGTGAATGGCAGCCGGCTTGTCCCCTACAGCTGCCGGAAAA
 CTATTCGGACTCAGAGGAAGAGGACGACGACGACTGGCCTCCAGCAGACAGGTATTAAGGACGACTCC
 CTTTCCCGGCATCGGCCAGACGAACCCATAGTAAGCCTCTCCCCCGCTGACTGCTAAATCGGCCGGCG
 GCAGGCTGGAGACTTCAGTTCAGGGAGGGGAGGACTCGCGATGAATGACAGGGCGCGGCTGCCGGGAG
 TCTAGACAGGAGCCGAAACCTCGAAGAGGCGCGGCCGCGGAGCAGGAGGAGGGTGTGATCAAGTGGAC
 TCCAGCCCGTTCTAGATACCGTGTAAACGCTAAGAACTGACCCTCTCTGCCCGCCCACTTACTG
 ACATGGACTCAACCTTGGATTTCGTAACAGGCTCCCTTCTGAAAACCAATAATCATATTGGCGGTGGGGC
 CTTCAAGTGGACTCCCCAGGATTTATTCTAACAGTCTCCCTCCAGTGCGGCGGTGGCCGCTTACT
 TCACTCAGGATCAATCACGCAATCATACGGGCTCCAATCATACCTACCTGAAAAACACATAACAACAAAC
 CGAAGCTTTCGAACCCGAAGAGGAACCTTCCAGCAATTTAAACGGGAGGAGGTGCCCAACAGGGAG
 TTTCAAGTCCCACTACTTGTGATGTTTCTTAACTGCTGCCTGCTATTTTTCTAATACTGGGACTG
 ACTTACCTAGGAATGAGAGGGACAGGATCTGAGGATGGAGAAGTCTCAGCATAGAAAACCCCTTTGGTG
 AAACATTTGAAAAATACAAGAAAGTAAAAAACTCTTATGATGAACACATTATATAAGTTCATGATCG
 ATTGGCACAGCTTGCAGGAGATCATGAATGTGGCAGTCTAGTCAAAGAACGCTTCTGTCAAGAGGCA
 GCTGCGTATTTAAAAGATTTAGGTCCTGAATATGAAGGTATATTTAACACTTCATTGCAGTGGATCTTAG
 AAAATGGAAGATGTTGGAATAAGGTGTGTTGGTTTTGGCCCTGAGGAAGAATTGACAAATATAACTGA
 TGTGCAGTTTTTACAGTCCACAAGACCACTGATGTCTTTTTGGTGTGTTTTCGACGTGCTTTTTGTTACT
 GTAACCTCACAGATTATTGTTGTTATGCTTAGGTGTAGTGTGTTTGTGTCGTTCTGCGTTACATGAAAT
 ATCGATGGACAAAAGAAGAGGAGGAAACAAGGCAGATGTATGATATGGTGGTAAAGATTATAGATGTTTT
 ACGAAGTCATAATGAAGCCTGCCAGGAAAAACAAGATTTACAACCTTACATGCCTATCCACATGTACGC
 GATTCCTTAATACAGCCTCATGACAGGAAAAAATGAAGAAAGTCTGGGATAGAGCTGTTGACTTCCTTG
 CTGCTAATGAGTCTAGAGTTCGCACGGAAACACGAAGAATAGGTGGTGCAGATTTTCTGGTTTGGCGGTG
 GATCCAGCCTTCTGCATCCTGTGACAAAAATATTAGTTATACCTTCTAAAGTATGGCAAGGTCAAGCATT
 CATTTAGATAGAAGAAATTCACCACCAATAGTTTGACACCGTGTCTAAAGATTGGAATATGTTTGATC
 CCGTTATGGAATAGGGGATCAGTGGCATTGGCAATTCAGAAGCAATTTAGAAAAATGCAGTGATAA
 TGATGGCATTGTTACATTGCAGTAGACAAAAATTCACGTGAGGGTTGTGTATATGTTAAATGTCTGTCT
 CCAGAATATGCTGGAAGGCTTTTAAAGCATTGCATGGCTCTTGGTTTGTGAGGAAATGGTTACAGTAA
 AATATTTACGACTAGATAGATACCACCATCGCTTTCCCGAGGCTCTCACTTCCAACACTCCATTGAAGCC
 ATCAAATAACATATGAACCTCATGTCTCATCTTCGTCTCGGACTGGCCTAACCAATTCTCAAGGAAGT
 TCC

ACGCGTACGCGGCGCTCGAGCAGAACTCATCTCAGAAGAGGATCTGGCAGCAAATGATATCCTGGATT
 ACAAGGATGACGACGATAAGGTTTAA

Protein Sequence: >RC212759 representing NM_014319
 Red=Cloning site Green=Tags(s)

```

MAAAAASAPQQLSDEELFSQLRRYGLSPGPVTESTRPVYLKLLKLRREEEQQHRSGGGRGNKTRNSNNN
TAAATVAAAGPAAAAAGMGRPVSGLSYLRTPGGLCRISASGPESLLGGPGGASAAPAAGSKVLLGFS
SDESDVEASPRDQAGGGGRKDRASLQYRGLKAPPAPLAASEVTNSNSAERRKPHSWWGARRPAGPELQTP
PGKDGAVEDEEGEGEDGEERDPETEEPLWASRTVNGSRLVPYSCRENYSDSEEDDDDDVASRQVLKDDS
LSRHRPRRTHSKPLPPLTAKSAGGRLETSVQGGGLAMNDRAAAAGSLDRSRNLEAAAAEQGGGCDQVD
SSPVPYRVNAKKLTPLLPPLTDMSTLDSSTGSLKTNHIGGAFSVDSPRIYNSLPPSAVAASS
SLRINHANHTGSNHTYLNKNTYNPKLSEPEEELLQQFKREEVSPTGSFSAHYLSMFLTTAACLFFLILGL
TYLGMRGTGVSEDELSIENPFGETFGKIQESEKTLMMNTLYKLHDLAQLAGDHECGSSSQRTLSVQEA
AAYLKDLGPEYEGIFNTSLQWILENGKDVGIRCVGFGPEEELTNI TDVQFLQSTRPLMSFWCRFRRAFVT
VTHRLLLLCLGVVMVCVVLRYMKYRWTKEEETRQMYDMVVKIIDVLRSHNEACQENKDLQPYMPIPHVR
DSLIIQPHDRKKMKKVVWDRAVDFLAANESRVRTETRRIGGADFLVWRWIQPSASCDKILVIPSKVWQGF
HLDRRNSPPNSLTPCLKIRNMFDPYMEIGDQWHLAIQEAI EKCSNDNGIVHIAVDKNSREGCVYVKCLS
PEYAGKAFKALHGSWFDGKLVTVKYLRLDRYHHRFPQALTSNTPLKPSNKHMSMSHLRLRTGLTNSQGS
S
  
```

TRTRPLEQKLISEEDLAANDILDYKDDDDKV

Chromatograms: https://cdn.origene.com/chromatograms/mk6047_e01.zip

Restriction Sites: SgfI-MluI

Cloning Scheme:

Cloning sites used for ORF Shuttling:



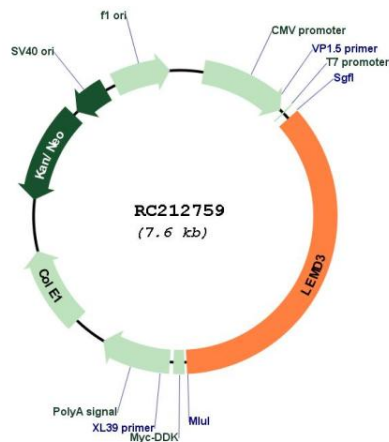
* The last codon before the Stop codon of the ORF

ACCN: NM_014319

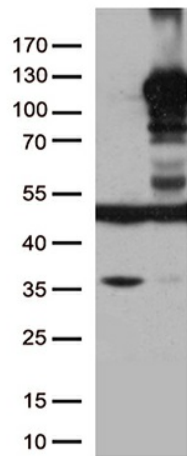
ORF Size: 2733 bp

OTI Disclaimer:	The molecular sequence of this clone aligns with the gene accession number as a point of reference only. However, individual transcript sequences of the same gene can differ through naturally occurring variations (e.g. polymorphisms), each with its own valid existence. This clone is substantially in agreement with the reference, but a complete review of all prevailing variants is recommended prior to use. More info
OTI Annotation:	This clone was engineered to express the complete ORF with an expression tag. Expression varies depending on the nature of the gene.
Components:	The ORF clone is ion-exchange column purified and shipped in a 2D barcoded Matrix tube containing 10ug of transfection-ready, dried plasmid DNA (reconstitute with 100 ul of water).
Reconstitution Method:	<ol style="list-style-type: none">1. Centrifuge at 5,000xg for 5min.2. Carefully open the tube and add 100ul of sterile water to dissolve the DNA.3. Close the tube and incubate for 10 minutes at room temperature.4. Briefly vortex the tube and then do a quick spin (less than 5000xg) to concentrate the liquid at the bottom.5. Store the suspended plasmid at -20°C. The DNA is stable for at least one year from date of shipping when stored at -20°C.
RefSeq:	NM_014319.5
RefSeq Size:	4785 bp
RefSeq ORF:	2736 bp
Locus ID:	23592
UniProt ID:	Q9Y2U8
Cytogenetics:	12q14.3
Domains:	LEM
Protein Families:	Transmembrane
MW:	99.8 kDa
Gene Summary:	This locus encodes a LEM domain-containing protein. The encoded protein functions to antagonize transforming growth factor-beta signaling at the inner nuclear membrane. Two transcript variants encoding different isoforms have been found for this gene. Mutations in this gene have been associated with osteopoikilosis, Buschke-Ollendorff syndrome and melorheostosis.[provided by RefSeq, Nov 2009]

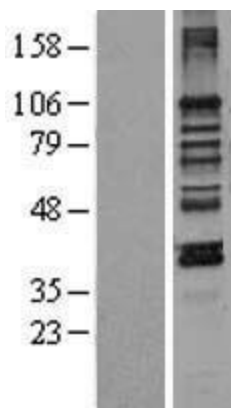
Product images:



Circular map for RC212759



HEK293T cells were transfected with the pCMV6-ENTRY control (Cat# [PS100001], Left lane) or pCMV6-ENTRY LEMD3 (Cat# RC212759, Right lane) cDNA for 48 hrs and lysed. Equivalent amounts of cell lysates (5 ug per lane) were separated by SDS-PAGE and immunoblotted with anti-LEMD3(Cat# [TA500797]). Positive lysates [LY402311] (100ug) and [LC402311] (20ug) can be purchased separately from OriGene.



Western blot validation of overexpression lysate (Cat# [LY402311]) using anti-DDK antibody (Cat# [TA50011-100]). Left: Cell lysates from untransfected HEK293T cells; Right: Cell lysates from HEK293T cells transfected with RC212759 using transfection reagent MegaTran 2.0 (Cat# [TT210002]).