

## Product datasheet for RC212756

### GPR7 (NPBWR1) (NM\_005285) Human Tagged ORF Clone

#### Product data:

Product Type:	Expression Plasmids
Product Name:	GPR7 (NPBWR1) (NM_005285) Human Tagged ORF Clone
Tag:	Myc-DDK
Symbol:	GPR7
Synonyms:	GPR7
Mammalian Cell Selection:	Neomycin
Vector:	pCMV6-Entry (PS100001)
E. coli Selection:	Kanamycin (25 ug/mL)
ORF Nucleotide Sequence:	>RC212756 representing NM_005285 Red=Cloning site Blue=ORF Green=Tags(s)

TTTTGTAATACGACTCACTATAGGGCGGCCGGAATTCGTCGACTGGATCCGGTACCGAGGAGATCTGCC  
GCC**CGATCGCC**

ATGGACAACGCCTCGTTCTCGGAGCCCTGGCCCGCAACGCATCGGGCCCGGACCCGGCGCTGAGCTGCT  
CCAACGCGTCGACTCTGGCGCCGCTGCCGGCGCCGCTGGCGGTGGCTGTACCAAGTTGTCTACGCGGTGAT  
CTGCGCCGTGGGTCTGGCGGGCAACTCCGCCGTGCTGTACGTGTTGCTGCGGGCGCCCGCATGAAGACC  
GTCACCAACCTGTTCACTCTCAACCTGGCCATCGCCGACGAGCTCTTACGCTGGTGTGCCATCAACA  
TCGCCGACTTCTGCTGCGGCAGTGGCCCTTCGGGGAGCTCATGTGCAAGCTCATCGTGGCTATCGACCA  
GTACAACACCTTCTCCAGCCTCTACTTCTCACCGTCATGAGCGCCGACCGCTACCTGGTGGTGTGGCC  
ACTGCGGAGTCGCGCCGGTGGCCGGCCACCTACAGCGCCGCGCGCGGTGAGCCTGGCCGTGTGGG  
GGATCGTCACACTCGTCGTGCTGCCCTTCGAGTCTTCGCCCGGCTAGACGACGAGCAGGGCCGGCGCCA  
GTGCGTGTAGTCTTCCGACGCCGAGGCCTTCTGGTGGCGCGGAGCCGCCTTACACGCTCGTGTG  
GGCTTCGCCATCCCCGTGTCCACCATCTGTGTCTCTATACCACCTGCTGTGCCGGTGCATGCCATGC  
GGCTGGACAGCCACGCCAAGGCCCTGGAGCGGCCAAGAAGCGGGTGACCTTCTGGTGGTGGCAATCCT  
GGCGGTGTGCCTCTGCTGGACGCCCTACCACCTGAGCACCGTGGTGGCGCTACCACCGACCTCCCG  
CAGACGCCGCTGGTACGCTATCTCTACTTCATCACCAGCCTGAGCTACGCCAACAGCTGCCTCAACC  
CCTTCTCTACGCCTTCTGGACGCCAGCTTCCGACGGAACCTCCGCCAGCTGATAACTTGCCGCGCGGC  
AGCC

AG**CGGACCG**ACGCGTACGCGGCCGCTCGAGCAGAACTCATCTCAGAAGAGGATCTGGCAGCAAATGATATCC  
TGGATTACAAGGATGACGACGATAAGGTTTAA



[View online »](#)

**Protein Sequence:** >RC212756 representing NM\_005285  
Red=Cloning site Green=Tags(s)

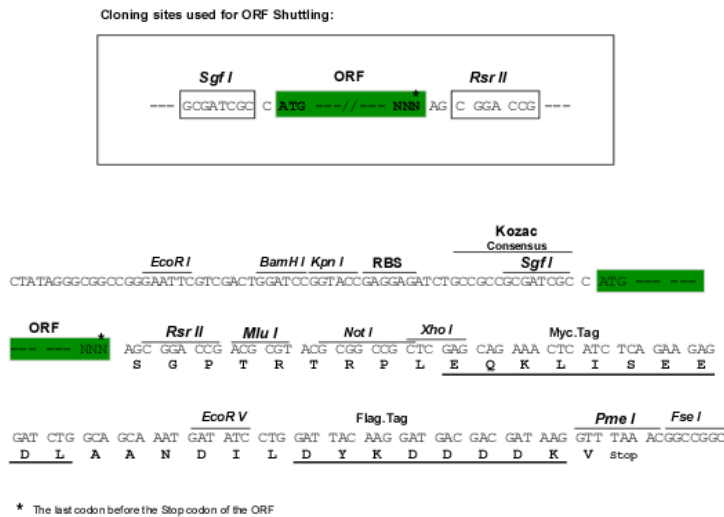
MDNASFSEPWPANASGPDPALSCSNASTLAPLPAPLAVAVPVVYAVICAVGLAGNSAVLYVLLRAPRMKT  
 VTNLFILNLAIADLFTLVLPINIADFLLRQWPFGLMCKLIVAIDQYNTFSSLYFLTVMSADRYLVVLA  
 TAESRRVAGRTYSAARAVSLAVWGI VTLVLPFAV FARLDDEQGRRCVLFVFPQPEAFWWRASRLYTLVL  
 GFAIPVSTICVL YTTLLCRLHAMRLDSHAKALERAKKRVTFVVAI LAVCLLCWTPYHLSTVVALTTDL P  
 QTPLVIAISYFITSLSYANSCLNPFLYAFLDASFRRNLRQLITCRAAA

SGPTRTRRLEQKLI SEEDLAANDILDYKDDDDKV

**Chromatograms:** [https://cdn.origene.com/chromatograms/mk6189\\_b09.zip](https://cdn.origene.com/chromatograms/mk6189_b09.zip)

**Restriction Sites:** SgfI-RsrII

**Cloning Scheme:**



**ACCN:** NM\_005285

**ORF Size:** 984 bp

**OTI Disclaimer:** The molecular sequence of this clone aligns with the gene accession number as a point of reference only. However, individual transcript sequences of the same gene can differ through naturally occurring variations (e.g. polymorphisms), each with its own valid existence. This clone is substantially in agreement with the reference, but a complete review of all prevailing variants is recommended prior to use. [More info](#)

**OTI Annotation:** This clone was engineered to express the complete ORF with an expression tag. Expression varies depending on the nature of the gene.

**Components:** The ORF clone is ion-exchange column purified and shipped in a 2D barcoded Matrix tube containing 10ug of transfection-ready, dried plasmid DNA (reconstitute with 100 ul of water).

**Reconstitution Method:**

1. Centrifuge at 5,000xg for 5min.
2. Carefully open the tube and add 100ul of sterile water to dissolve the DNA.
3. Close the tube and incubate for 10 minutes at room temperature.
4. Briefly vortex the tube and then do a quick spin (less than 5000xg) to concentrate the liquid at the bottom.
5. Store the suspended plasmid at -20°C. The DNA is stable for at least one year from date of shipping when stored at -20°C.

**RefSeq:** [NM\\_005285.5](#)

**RefSeq Size:** 987 bp

**RefSeq ORF:** 987 bp

**Locus ID:** 2831

**UniProt ID:** [P48145](#)

**Cytogenetics:** 8q11.23

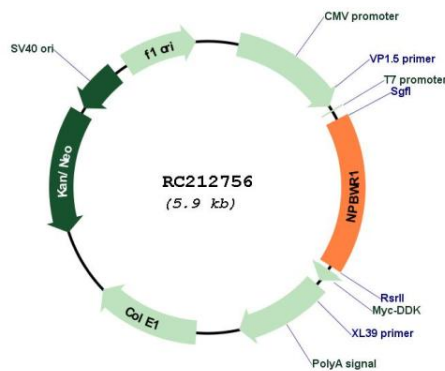
**Protein Families:** Druggable Genome, GPCR, Transmembrane

**Protein Pathways:** Neuroactive ligand-receptor interaction

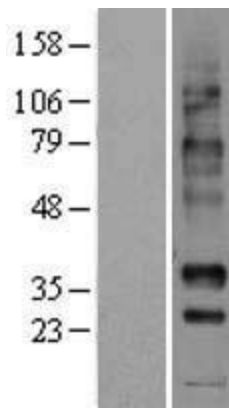
**MW:** 35.9 kDa

**Gene Summary:** Interacts specifically with a number of opioid ligands. Receptor for neuropeptides B and W, which may be involved in neuroendocrine system regulation, food intake and the organization of other signals. Has a higher affinity for neuropeptide B.[UniProtKB/Swiss-Prot Function]

### Product images:



Circular map for RC212756



Western blot validation of overexpression lysate (Cat# [LY401627]) using anti-DDK antibody (Cat# [TA50011-100]). Left: Cell lysates from untransfected HEK293T cells; Right: Cell lysates from HEK293T cells transfected with RC212756 using transfection reagent MegaTran 2.0 (Cat# [TT210002]).