

Product datasheet for **RC212752**

SYTL3 (NM_001009991) Human Tagged ORF Clone

Product data:

Product Type:	Expression Plasmids
Product Name:	SYTL3 (NM_001009991) Human Tagged ORF Clone
Tag:	Myc-DDK
Symbol:	SYTL3
Synonyms:	SLP3
Mammalian Cell Selection:	Neomycin
Vector:	pCMV6-Entry (PS100001)
E. coli Selection:	Kanamycin (25 ug/mL)



[View online »](#)

ORF Nucleotide Sequence:

>RC212752 ORF sequence
 Red=Cloning site Blue=ORF Green=Tags(s)

TTTTGTAATACGACTCACTATAGGGCGGCCGGAATTCGTGACTGGATCCGGTACCGAGGAGATCTGCC
 GCC**CGGATCGCC**

ATGGCCAAAGAAATAGATCTGAGTGCTCTCAAGGAGTTAGAACGCGAGGCCATTCTCCAGTCTGTACC
 GAGACCAGGCGGTTCAAAACACAGAGGAGGAGACACGAAACTGAAAACACACCTGCAGCATCTCCG
 GTGGAAAGGAGCGAAGAACACGGACTGGGAGCACAAGAGAAGTCTGTGCGCGTCCAGCAGGTGCTG
 GGGTTCCTGCTGCACCGGGCGCCGTGTGCCGGGCTGCAGCCACCGCTGTGTGCCAGTGCCAGTGT
 TCCTGAGGGGACCCATGCCTGGAAGTGCACGGTGTGCTTCGAGGACAGGAATGTCAAAATAAACTGG
 AGAATGGTTCATGAGGAACGAGCCAAGAAATTTCCAACGGAGGCAAACATGAGACAGTTGGAGGGCAG
 CTCTTGCAATCTATCAGAAGCTGAGCAAAATTTCTGTGGTTCCTCTACTCCACCTCTGTGAGCGAGA
 GCCAGTGCAGCCGAGTCTGGCAGGAAGTCACTGCACAGATATTCTGAAACCTCTCAATCAAGAGGA
 TCCAAATGCTCTACTAACCTATTTTGAAGCAACAGAATCTCCATCCAGTCCGGCACCCAGTACCATA
 TTCTCTGGAGTTTTAGACACGGAAGTTAATTAGCATTGACAGCACCTGTACAGAGATGGCAATTTTG
 ACAATGCTAATGTCACTGGAGAAATAGAAATTTGCCATTATTATTGCTTCAAACCATTCTTTAGAAAT
 ATGCATCAAGGCCTGTAAGAACCTTGCCTATGGAGAAGAAAAGAAAAGTGCATCCGTATGTGAAG
 ACCTACCTGTTGCCCGACAGATCTCCAGGAAAGCGCAAGACTGGAGTCCAAAGGAACACCGTGGACC
 CGACCTTTCAGGAGACCTTGAAGTATCAGGTGGCCCTGCCAGCTGGTACCCGGCAGCTGCAGGTCTC
 GGTGTGGCATCTGGGCACGCTGGCCGGAGAGTGTTCCTGGAGAAGTATCATTCTCTGGCCACGTGG
 GACTTTGAAGACAGCACAACACAGTCTTCCGCTGGCATCCGCTCCGGGCAAGGCGGAGAAAATACGAAG
 ACAGCGTTCCTCAGAGTAATGGAGAGCTCACAGTCCGGGCTAAGCTGGTCTCCCTCACGGCCAGAAA
 ACTCCAAGAGGCTCAAGAAGGGACAGATCAGCCATCACTTCATGGTCAACTTTGTTTGGTAGTGCTAGGA
 GCCAAGAATTTACCTGTGCGGCCAGATGGCACCTTGAACCTATTTGTTAAGGGCTGTCTCACTCTGCCAG
 ACCAACAAAACTGAGACTGAAGTCGCCAGTCTGAGGAAGCAGGCTTGCCTCCAGTGGAAACACTCATT
 TGTCTTCAAGTGGCGTAACCCAGCTCAGCTGAGGCAGTCGAGCTTGGAGTAACTGTCTGGGATCAGGCC
 CTCTTTGGAATGAACGACCGCTTGTGGAGGAACCAGACTTGGTTCAAAGGGAGACACAGCTGTTGGCG
 GGGATGCATGCTACAATCGAAGCTCCAGTGGCAGAAAGTCTTTCCAGCCCAATCTATGGACAGACAT
 GACTCTTGTCTGCAC

ACGCGTACGCGGCCGCTCGAGCAGAAACTCATCTCAGAAGAGGATCTGGCAGCAAATGATATCCTGGATT
 ACAAGGATGACGACGATAAGGTTTAA

Protein Sequence:

>RC212752 protein sequence
 Red=Cloning site Green=Tags(s)

MAQEIDL SALKELEREAILQVLYRDQAVQNTTEEERTRKLTHTLQHLRWKGAKNWDWEHKEKCCARCQQVL
 GFLLHRGAVCRGCSHRVCAQCRVFLRGTHAWKCTVCFEDRNVKIKTGEWFYEERAKKFPPTGGKHETVGGQ
 LLQSYQKLSKISVVPPTPPPVSSESQCSRSRGRKVSAPDILKPLNQEDPKCSTNPIKQQLNPSSPAPSTI
 FSFGFRHGSLSIDSTCTEMGNFDNANVTGEIEFAIHYCFKTHSLEICIKACKNLAYGEEKKKCNPYVK
 TYLLPDRSSQGRKRTGVQRNTVDPTFQETLKYQVAPAQLVTRQLQVSVWHLGTLARRVFLGEV IIPLATW
 DFEDSTTQSRWHPLRAKAKEYEDSVPQSNGLTVRAKLVLSRPRKLQEAQEGTDQPSLHGQLCLVVLG
 AKNLPVRPDGTLNSFVKGLTLPDQQLRLKSPVLRKQACPQWKHSFVFSVTPAQLRQSSLELTVWDQA
 LFGMNDRLLLGGTRLGSKGDTAVGGDACSQSKLQWQKVLSSPNLWDMTLVLH

TRTRPLEQKLISEEDLAANDILDYKDDDDKV

Chromatograms:

https://cdn.origene.com/chromatograms/mk6456_a03.zip

Restriction Sites:

Sgfl-Mlul

Cloning Scheme:


ACCN: NM_001009991

ORF Size: 1626 bp

OTI Disclaimer: The molecular sequence of this clone aligns with the gene accession number as a point of reference only. However, individual transcript sequences of the same gene can differ through naturally occurring variations (e.g. polymorphisms), each with its own valid existence. This clone is substantially in agreement with the reference, but a complete review of all prevailing variants is recommended prior to use. [More info](#)

OTI Annotation: This clone was engineered to express the complete ORF with an expression tag. Expression varies depending on the nature of the gene.

Components: The ORF clone is ion-exchange column purified and shipped in a 2D barcoded Matrix tube containing 10ug of transfection-ready, dried plasmid DNA (reconstitute with 100 ul of water).

- Reconstitution Method:**
1. Centrifuge at 5,000xg for 5min.
 2. Carefully open the tube and add 100ul of sterile water to dissolve the DNA.
 3. Close the tube and incubate for 10 minutes at room temperature.
 4. Briefly vortex the tube and then do a quick spin (less than 5000xg) to concentrate the liquid at the bottom.
 5. Store the suspended plasmid at -20°C. The DNA is stable for at least one year from date of shipping when stored at -20°C.

RefSeq: [NM_001009991.1](#), [NP_001009991.1](#)

RefSeq Size: 2284 bp

RefSeq ORF: 1629 bp

Locus ID: 94120

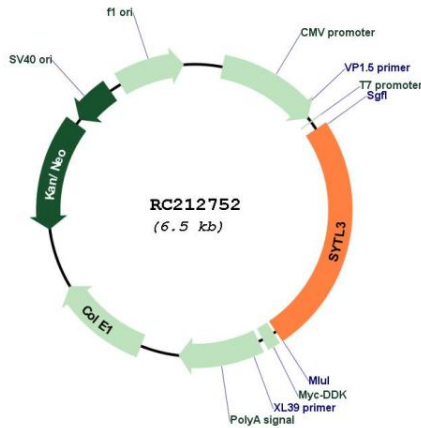
UniProt ID: [Q4VX76](#)

Cytogenetics: 6q25.3

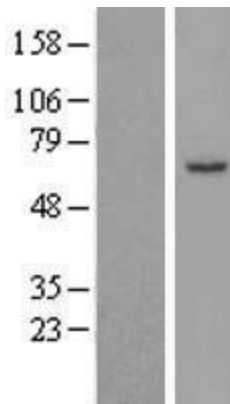
MW: 60.9 kDa

Gene Summary: The protein encoded by this gene belongs to a family of peripheral membrane proteins that play a role in vesicular trafficking. This protein binds phospholipids in the presence of calcium ions. Alternatively spliced transcript variants encoding different isoforms have been found for this gene. [provided by RefSeq, Jan 2016]

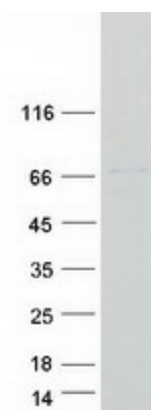
Product images:



Circular map for RC212752



Western blot validation of overexpression lysate (Cat# [LY423169]) using anti-DDK antibody (Cat# [TA50011-100]). Left: Cell lysates from untransfected HEK293T cells; Right: Cell lysates from HEK293T cells transfected with RC212752 using transfection reagent MegaTran 2.0 (Cat# [TT210002]).



Coomassie blue staining of purified SYTL3 protein (Cat# [TP312752]). The protein was produced from HEK293T cells transfected with SYTL3 cDNA clone (Cat# RC212752) using MegaTran 2.0 (Cat# [TT210002]).