

## Product datasheet for RC212750

### NKAIN2 (NM\_001040214) Human Tagged ORF Clone

#### Product data:

**Product Type:** Expression Plasmids  
**Product Name:** NKAIN2 (NM\_001040214) Human Tagged ORF Clone  
**Tag:** Myc-DDK  
**Symbol:** NKAIN2  
**Synonyms:** FAM77B; NKAIP2; TCBA; TCBA1  
**Mammalian Cell Selection:** Neomycin  
**Vector:** pCMV6-Entry (PS100001)  
**E. coli Selection:** Kanamycin (25 ug/mL)  
**ORF Nucleotide Sequence:** >RC212750 representing NM\_001040214  
 Red=Cloning site Blue=ORF Green=Tags(s)

TTTTGTAATACGACTCACTATAGGGCGGCCGGAATTCGTCGACTGGATCCGGTACCGAGGAGATCTGCC  
 GCC**CGATCGCC**

ATGGGTTATTGCAGTGGCAGGTGCACGCTTATCTTTATCTGTGGCATGCAACTGGTTTGTGTGCTGGAGA  
 GGCAAATATTTGACTTCCTTGGATATCAGTGGCACCTATCCTGGCAAATTTGTACATATTATTATCGT  
 CATTCTTGGTTTGTGGAACTATTCAATATAGACCTCGTTACATAACAGGATATGCTGTCTGGCTAGTC  
 CTCTGGGTTACGTGGAATGTGTTTGTATCTGCTTCTATTTGGAGGCTGGGGACCTCTCAAAGGAAACAG  
 ACCTTATCCTGACTTTTAAATATCAATGCACCGATCTTGGTGGATGGAGATGGACCAGGATGTACGGT  
 GACGTCAGTGACACCTGCCCCAGACTGGGCCCCAGAAGACCATCGCTACATCACGGTCTCAGGGTGTGTTG  
 CTGGAGTACCAAGTACATAGAAGTGGCTCATAGTCCCTCCAGATTGTCCTCGCACTGGCAGGTTTCATCT  
 ACGCCTGTTATGTTGTGAAATGTATAACTGAAGAAGAGGACAGCTTTGATTTTCATAGGTGGCTTTGACTC  
 TTATGGCTATCAAGGCCTCAGAAGACATCTCATTTACAACACTACAGCCTATGTACATGTCAAAA

**ACGCGT**ACGCGGCCGCTCGAGCAGAACTCATCTCAGAAGAGGATCTGGCAGCAAATGATATCCTGGATT  
 ACAAGGATGACGACGATAAGGTTTAA

**Protein Sequence:** >RC212750 representing NM\_001040214  
 Red=Cloning site Green=Tags(s)

MGYCSGRCTLIFICGMQLVCLERQIFDFLGYQWAPILANFVHIIIVILGLFGTIQYRPRYITGYAVWL  
 LWVTWNVFVICFYLEAGDLSKETDLILTFNISMHRSSWMENPGCTVTSVTPAPDWAPEDHRYITVSGCL  
 LEYQYIEVAHSSLQIVLALAGFIYACYVVKCITEEEDSFDFIGGFDSYGYQGPQKTSHLQLQPMYSK

**TRTRPLEQKLI**SEEDLAANDILDYKDDDDKV



[View online »](#)

Restriction Sites: SgfI-MluI

Cloning Scheme:



ACCN: NM\_001040214

ORF Size: 624 bp

OTI Disclaimer: The molecular sequence of this clone aligns with the gene accession number as a point of reference only. However, individual transcript sequences of the same gene can differ through naturally occurring variations (e.g. polymorphisms), each with its own valid existence. This clone is substantially in agreement with the reference, but a complete review of all prevailing variants is recommended prior to use. [More info](#)

OTI Annotation: This clone was engineered to express the complete ORF with an expression tag. Expression varies depending on the nature of the gene.

Components: The ORF clone is ion-exchange column purified and shipped in a 2D barcoded Matrix tube containing 10ug of transfection-ready, dried plasmid DNA (reconstitute with 100 ul of water).

- Reconstitution Method:
1. Centrifuge at 5,000xg for 5min.
  2. Carefully open the tube and add 100ul of sterile water to dissolve the DNA.
  3. Close the tube and incubate for 10 minutes at room temperature.
  4. Briefly vortex the tube and then do a quick spin (less than 5000xg) to concentrate the liquid at the bottom.
  5. Store the suspended plasmid at -20°C. The DNA is stable for at least one year from date of shipping when stored at -20°C.

RefSeq: [NM\\_001040214.3](#)

RefSeq Size: 3315 bp

RefSeq ORF: 627 bp

Locus ID: 154215

UniProt ID: [Q5VXU1](#)

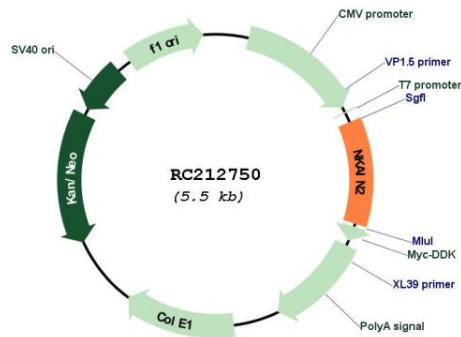
**Cytogenetics:** 6q22.31

**Protein Families:** Transmembrane

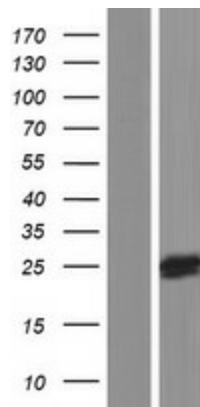
**MW:** 23.7 kDa

**Gene Summary:** This gene encodes a transmembrane protein that interacts with the beta subunit of a sodium/potassium-transporting ATPase. A chromosomal translocation involving this gene is a cause of lymphoma. Alternative splicing results in multiple transcript variants encoding distinct isoforms. [provided by RefSeq, Jul 2014]

**Product images:**



Circular map for RC212750



Western blot validation of overexpression lysate (Cat# [LY421727]) using anti-DDK antibody (Cat# [TA50011-100]). Left: Cell lysates from untransfected HEK293T cells; Right: Cell lysates from HEK293T cells transfected with RC212750 using transfection reagent MegaTran 2.0 (Cat# [TT210002]).