

Product datasheet for RC212742

CORIN (NM_006587) Human Tagged ORF Clone

Product data:

| | |
|---------------------------|---|
| Product Type: | Expression Plasmids |
| Product Name: | CORIN (NM_006587) Human Tagged ORF Clone |
| Tag: | Myc-DDK |
| Symbol: | CORIN |
| Synonyms: | ATC2; CRN; Lrp4; PEE5; TMPRSS10 |
| Mammalian Cell Selection: | Neomycin |
| Vector: | pCMV6-Entry (PS100001) |
| E. coli Selection: | Kanamycin (25 ug/mL) |
| ORF Nucleotide Sequence: | >RC212742 representing NM_006587 Red=Cloning site Blue=ORF Green=Tags(s) |

TTTTGTAATACGACTCACTATAGGGCGGCCGGAATTCGTCGACTGGATCCGGTACCGAGGAGATCTGCC
GCC**CGATCGCC**

ATGAAACAGTCTCCTGCCCTCGCTCCGGAAGAGCGCTGCCGCAGAGCCGGTCCCAAAGCCGGTCTTGA
GAGCTGATGACAATAACATGGGCAATGGCTGCTCTCAGAAGCTGGCGACTGCTAACCTCCTCCGGTCTCT
ATTGCTGGTCTGATTCCATGTATCTGTGCTCTCGTTCTCTTGTGGTGATCCTGCTTCCCTATGTTGGA
ACATTACAAAAGGTCTATTTAAATCAAATGGGAGTGAACCTTTGGTCACTGATGGTAAATCCAAGGT
CCGATGTTATTCTTACAAATACAATTTATAACCCAGAGCACTGTGGTGTCTACTGCACATCCCGACCAACA
CGTCCAGCCTGGACTACGGATGCTTCTCTCCAGGGGACCAAAGTACAGGAATACAAGTGCCTGTATG
AACATCACCCACAGCCAGTGTGAGATGTCGCCCTACCACGCCACGCTGACACCTCTCCTCTCAGTTGTCA
GAAACATGGAAATGGAAAAGTTCCTCAAGTTTTTACATATCTCCATCGCCTCAGTTGCTATCAACATAT
CATGCTGTTTGGCTGTACCCTCGCTTCCCTGAGTGCATCATTGATGGCGATGACAGTCAAGGACTCCTG
CCCTGTAGGTCTTCTGTGAGGCTGAAAAGAAGGCTGTGAATCAGTCTGGGGATGGTGAATTACTCCT
GGCCGGATTTCTCAGATGCTCCAGTTTAGAAACCAAAGTGAAGCAGCAATGTCAGCAGAATTTGCTT
CTCACCTCAGCAGGAAAACGAAAAGCAATTGCTCTGTGGAAGGGTGAGAACTTTCTGTGCGCAGTGGA
ATCTGCATCCCCGGGAACTGCAATGTAATGGCTACAACGACTGTGACGACTGGAGTACAGGCTCATT
GCAACTGCAGCGAGAATCTGTTTCACTGTACACAGGCAAGTGCCTTAATTACAGCCTTGTGTGATGG
ATATGATGACTGTGGGATTTGAGTGTGAGCAAACTGTGATTGCAATCCCAACAGAGCATCGCTGC
GGGACGGGCGCTGCATCGCCATGGAGTGGGTGTGTGATGGTGACCAGACTGTGTGGATAAGTCTGACG
AGGTCAACTGCTCCTGTACAGCCAGGGTCTGGTGGAAATGCAGAAATGGACAATGTATCCCCAGCACGTT
TCAATGTGATGGTGACGAGGACTGCAAGGATGGGAGTGTGAGGAGAAGTGCAGCGTCATTGAGACTTCA
TGTCAGAAGGAGACCAAAGATGCCTTACAATCCCTGCCTTGATTCATGTTGGTGGTAGCTCTCTGTG
ACCCGAACAACAGTCTGAATAACTGTAGTCAATGTGAACCAATTACATTGGAAGTCTGCATGAATTTGCC
CTACAACAGTACAAGTTATCCAATTATTTGGCCACAGGACTCAAAGGAAGCATCCATCAGCTGGGAG



[View online >](#)

TCTTCTTTTTCCCTGCACTTGTTCAAACCAACTGTTATAAATACCTCATGTTCTTTTCTTGACCACTT
 TGGTACAAAAATGTGATGTGAATACAGGCGAGCATATCCCTCCTTGACAGGCATTGTGTGAACACTCTAA
 AGAACGCTGTGAGTCTGTTCTTGGGATTGTGGGCTACAGTGGCCTGAAGACACAGATTGCAGTCAATTT
 CCAGAGGAAAAATCAGACAATCAAACCTGCCTGATGCCTGATGAATATGTGGAAGAATGCTCACCTAGTC
 ATTTCAAGTGCCGCTCAGGACAGTGTGTCTGGCTTCCAGAAGATGTGATGGCCAGGCCGACTGTGACGA
 TGACAGTGTAGAGAAAACCTGTGGTTGTAAGAGAGAGATCTTTGGGAATGTCCATCAAATAAACAATGT
 TTGAAGCACACAGTGTCTGCGATGGGTTCCAGACTGCCCTGATTACATGGACGAGAAAACTGCCTCAT
 TTTGCCAAGATGATGAGCTGGAATGTGCAAACCATGCGTGTGTGCACGTGACCTGTGGTGTGATGGTGA
 AGCCGACTGCTCAGACAGTTCAGATGAATGGGACTGTGTGACCCTCTCTATAAATGTGAACCTCTTCC
 TTTCTGATGGTTCACAGAGCTGCCACAGAACACCATGTGTGTGCAGATGGCTGGCAGGAGATATTGAGTC
 AGCTGGCCTGCAAGCAGATGGGTTTAGGAGAACCATCTGTGACCAAATTGATACAGGAACAGGAGAAAGA
 GCCCGGTGGCTGACATTACACTCCAACCTGGGAGAGCCTCAATGGGACCACTTTACATGAACTTCTAGTA
 AATGGGCAGTCTGTGAGAGCAGAAGTAAAATTTCTTCTGTGTACTAAACAAGACTGTGGCGCCGCC
 CTGCTGCCGAATGAACAAAAGGATCCTTGGAGGTCGGACGAGTCGCCCTGGAAGGTGGCATGGCAGTG
 TTCTCTGCAGAGTGAACCAAGTGGACATATCTGTGGCTGTGTCTCATTGCCAAGAAGTGGGTTCTGACA
 GTTGCCCACTGCTTCGAGGGGAGAGAGAATGCTGCAGTTTGAAAAGTGGTCTTGGCATCAAACAATCTAG
 ACCATCCATCAGTGTTCATGCAGACACGCTTTGTGAAGACCATCATCCTGCATCCCCGCTACAGTCGAGC
 AGTGGTGGACTATGACATCAGCATCGTTGAGCTGAGTGAAGACATCAGTGAAGACTGGCTACGTCGGGCT
 GTCTGCTTGCCCAACCCGGAGCAGTGGCTAGAGCCTGACACGTAAGTGTATATCAGAGCTGGGGCCACA
 TGGGCAATAAAATGCCATTTAAGCTGCAAGAGGGAGAGGTCGCCATTATTTCTCTGGAACATTGTGAGTC
 CTACTTTGACATGAAGACCATCACCCTCGGATGATATGTGCTGGCTATGAGTCTGGCACAGTTGATTCA
 TGCATGGGTGACAGCGGTGGGCTCTTGTGTTGTGAGAAGCCTGGAGGACGGTGGACATTATTTGGATTAA
 CTTTCATGGGCTCCGTCTGCTTTTCCAAAGTCTGGGGCTGGCGTTTATAGTAATGTGTATATTCGT
 CGAATGGATAAAAGACAGATTTACATCCAGACCTTTCTCCTAAAC

ACGCGTACGCGGCCGCTCGAGCAGAAACTCATCTCAGAAGAGGATCTGGCAGCAATGATATCCTGGATT
 ACAAGGATGACGACGATAAGGTTTAA

Protein Sequence:

>RC212742 representing NM_006587
 Red=Cloning site Green=Tags(s)

MKQSPALAPEERCRRAGSPKPVLRADDNMGNGCSQKLATANLLRFLLLVLIIPCICALVLLLVIILLSYVG
 TLQKVYFKSNGSEPLVTDGEIQGSDVILTNTIYNQSTVVSTAHPDQHPVPAWTTDASLPGDQSHRNTSACM
 NITHSQCQMLPYHATLTPLLSVVRNMEMEKFLKFFTYLHRLSCYQHIMLFGCTLAFPECIDGDDSHGLL
 PCRSFCEAAKEGCESVLGMVNYSWPDFLRCSQFRNQTESNVSRICTFSPQQENGKQLLCGRGENFLCASG
 ICIPGKLCQNGYNDCCDDWSDEAHCNCSENLFHCHTGKCLNYSLVCDGYDDCGDLSDQNCDCNPTTEHRC
 GDGRCIAMEWVCDGDHDCVDKSDEVNCSCHSQGLVECRNGQCIPSTFQCDGEDCKDGSDEENCSVIQTS
 CQEGDQRCLYNPCLDSCGSSSLCDPNNLSNCSQCEPITILELCMNL PYNSTSYPNYFGHRTQKEASISWE
 SSLFPALVQTNKYLMFFSCTILVPKCDVNTGEHIPPCRALCEHSKERCESVLGIVGLQWPEDTDCSQF
 PEENSDNQTCMLPDEYVEECSPSHFKCRSGQCVLASRRCDGQADCCDDSDSEENCGCKERDLWECPSNKQC
 LKHTVICDGFPCDPYDMEKNCFSQDDELECANHACVSRDLWCDGEADCSDEWDCVTL SINVNSSS
 FLMVHRAATEHHVCADGWQEILSQLACKQMGLEPVSVKLIQEKEPRWLTLSHNWESLNGTTLHELLV
 NGQSCESRSKISLLCTKQDCGRRPAARMNKRI LGGRTSRPGRWPQCSLQSEPSGHCIGCVLIAKKWVLT
 VAHCFEGRENAAVWKVVLGINNLDHPSVFMQTRFVKTIILHPRYSRAVVDYDISIVELSEDISETGYVRP
 VCLPNPEQWLEPDTYCYITGWGHMGNKMPFKLQEGEVRIISLEHCQSYFDMKTIITRMICAGYESGTVDS
 CMGDSGGPLVCEKPGRWTLFGLTSWGSVCF SKVLGPGVYSNVS YFVEWIKRQIYIQTFLLN

TRTRPLEQKLI SEEDLAANDILDYKDDDDKV

Chromatograms:

https://cdn.origene.com/chromatograms/mg3938_e01.zip

Restriction Sites:

Sgfl-Mlul

Cloning Scheme:


ACCN: NM_006587

ORF Size: 3126 bp

OTI Disclaimer: The molecular sequence of this clone aligns with the gene accession number as a point of reference only. However, individual transcript sequences of the same gene can differ through naturally occurring variations (e.g. polymorphisms), each with its own valid existence. This clone is substantially in agreement with the reference, but a complete review of all prevailing variants is recommended prior to use. [More info](#)

OTI Annotation: This clone was engineered to express the complete ORF with an expression tag. Expression varies depending on the nature of the gene.

Components: The ORF clone is ion-exchange column purified and shipped in a 2D barcoded Matrix tube containing 10ug of transfection-ready, dried plasmid DNA (reconstitute with 100 ul of water).

- Reconstitution Method:**
1. Centrifuge at 5,000xg for 5min.
 2. Carefully open the tube and add 100ul of sterile water to dissolve the DNA.
 3. Close the tube and incubate for 10 minutes at room temperature.
 4. Briefly vortex the tube and then do a quick spin (less than 5000xg) to concentrate the liquid at the bottom.
 5. Store the suspended plasmid at -20°C. The DNA is stable for at least one year from date of shipping when stored at -20°C.

RefSeq: [NM_006587.4](#)

RefSeq Size: 4942 bp

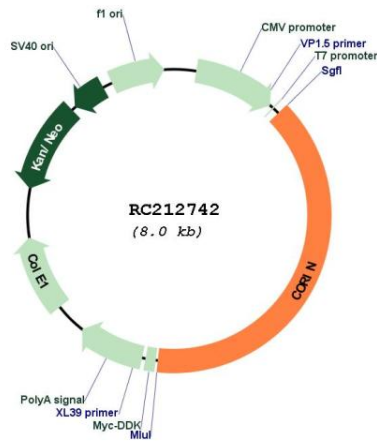
RefSeq ORF: 3129 bp

Locus ID: 10699

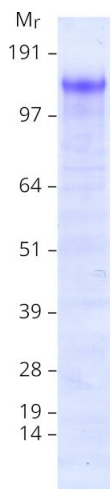
UniProt ID: [Q9Y5Q5](#)

Cytogenetics: 4p12
Domains: FRI, SR, Tryp_SPC, ldl_recept_a
Protein Families: Druggable Genome, Protease, Transmembrane
MW: 116.3 kDa
Gene Summary: This gene encodes a member of the type II transmembrane serine protease class of the trypsin superfamily. Members of this family are composed of multiple structurally distinct domains. The encoded protein converts pro-atrial natriuretic peptide to biologically active atrial natriuretic peptide, a cardiac hormone that regulates blood volume and pressure. This protein may also function as a pro-brain-type natriuretic peptide convertase. Multiple alternatively spliced transcript variants encoding different isoforms have been found for this gene. [provided by RefSeq, Jun 2013]

Product images:



Circular map for RC212742



Coomassie blue staining of purified CORIN protein (Cat# [TP312742]). The protein was produced from HEK293T cells transfected with CORIN cDNA clone (Cat# RC212742) using MegaTran 2.0 (Cat# [TT210002]).