

Product datasheet for RC212738

NEDD4 (NM_198400) Human Tagged ORF Clone

Product data:

Product Type:	Expression Plasmids
Product Name:	NEDD4 (NM_198400) Human Tagged ORF Clone
Tag:	Myc-DDK
Symbol:	NEDD4
Synonyms:	NEDD4-1; RPF1
Mammalian Cell Selection:	Neomycin
Vector:	pCMV6-Entry (PS100001)
E. coli Selection:	Kanamycin (25 ug/mL)
ORF Nucleotide Sequence:	>RC212738 representing NM_198400 Red=Cloning site Blue=ORF Green=Tags(s)

TTTTGTAATACGACTCACTATAGGGCGGCCGGAATTCGTCGACTGGATCCGGTACCGAGGAGATCTGCC
GCCCGGATCGCC

ATGGCACAAAGCTTACGATTGCACTTTGCAGCCAGAAGAAGCAATACTTACCCTTTGTCAGAAACCTCCG
GAGATGACTTGGATAGCCATGTTACATGTGCTTCAAAGACCAACACGGATTTCAACGTCTAACGTTGT
TCAAATGAAGCTGACTCCAGACAGACTGCACTAGCTCCGTTAATAAAGGAAAACGTTCAAGTCTCAAGAA
AGATCATCTGTTCCCTCATCTGAAAATGTTAATAAAAAGAGCAGCTGTCTACAGATTTCACTACAGCCAA
CAAGGTACAGTGGATATCTTCAAGTCTAGCAATGTCTTAGCTGATAGTGTGATGCTTCCGTTTACTTGTAT
CTTGAAGGATGGTATTTACAGTAGTGTGTGGTCGATAATGAATTGAATGCTGTGAATGATGGTACACCTT
GTAAGCAGTCCAGCCATTTGTAGTGGTAGCCTTAGTAACCTTTTCAACCAGTGATAATGGGTCTTACAGCA
GCAACGGTAGTGATTTTGGGTCACTGTGCAAGTATCACAAGTGGAGGTTTATATACTAACAGTGTGATCAG
TGACAGTAGTAGTTATACTTTTCCACCAAGTATGATACTTTTTGGGTGGAAACTTACCTTCTGACAGC
ACCTCCAATAGAAGTGTGCCAACAGGAATACTACTCCTTGTGAAATTTTTCAAGAAGTACAAGTACAG
ATCCTTTTGTCCAGGATGACTTGGAAACATGGATTAGAGATTATGAAATGGCCAGTGGCAGGAACACAAA
AATCCACTAAAACGTTACTCCTCCTTAGTCAATTTTTCTAGGAGTCTTCAACTACCCGACCGACTTCT
CCAACAAGTCTGTACTCTTCTGAGCAAAGGATCCTATCAAACCTCACACCAGTTTATTTTCTCCTA
GTGAAATTGCACATAATGAGGATGGCACTAGTGCTAAAGGATTTCTTTCAACAGCTGCAATGGACTTCG
GTTATCTAAAACAATTTGTACCCCGGAGAAGTAAAGAGACATACGCGCTTACAGGAAGGGCTCGTTA
CAGAAGAAAATTGTTCTTTTGAATAAATACTCCCAGACAGACTGTCTGTGAAAAGTCATCTGAAGGATATT
CTTGTGTTTCAAGTGCATTTACCCCAACGAAAAGCAGCTACATTAGACTGTGAAACAACAATGGTGATTG
TAAACCAGAAATGTCAGAAATTAAGCTTAATTCTGATTCAAGATATTAAGCTCATGCATAGGACATCT
GCATGTTTCCATCCTCCAAAATGTAGATTGTCAAATAAATATCAATGGAGAATTGGAAAGACCACATT
CACAGATGAACAAAACCATGGTATTTACGAAGAAGTATTTTATTGGGAGGAGCTTATCCAAATATTTCT
CTGTCTATCCAGCCTTAAGCACAATTGTTCTAAAGGGGGACCATCTCAGTTACTATAAAGTTTGCATCT



GGAAATGAAGGTAAGTGGATAATTTATCAAGAGACAGCAACAGAGATTGCACAAATGAACTGTCTAATT
CTTGCAAGCCTGGCTGGGTTGTTTTGGACCAACCAGATGCTGCTTGCCATTTGCAGCAACAACAAGAACC
TTCTCCTCTACCTCCAGGGTGGGAAGAGAGGCAGGATATCCTTGGAAAGGACCTATTATGTAACCATGAA
TCTAGAAGAACACAGTGGAAAAGACCAACCCTCAGGACAACCTAACAGATGCTGAGAATGGCAACATTC
AACTGCAAGCACAACTGCATTTACCACCAGGCCGAGATATCCGAGGAAACAGAAAGTGTGACAACCG
AGAGTCTTCCGAGAAGTGGGAAATTAAGAGAAGATGAAGCCACCATGTATAGCAACAGGCCTTCCCA
TCACCTCCACCGTCAAGTAACTTGGATGTTCCAACCTCATCTTGAGAAGAATTGAATGCCAGACTACCA
TTTTTGGAAATTCAGCCGTGAGCCAGCCAGCATCGAGCTCAAATCATTCCAGCAGAAGAGGCAGCTTACA
AGCCTATACTTTTGGGAACAACCTACACTTCTGCTTTTGCCTACTTCATCTGGATTACCACCAGGT
TGGGAAGAAAAACAAGATGAAAGAGGAAGATCATATTATGTAGATCACAATTCAGAACGACTACTTGGA
CAAAGCCCACTGTACAGGCCACAGTGGAGACCAGTCAGCTGACCTCAAGCCAGAGTTCTGCAGGCCCTCA
ATCACAAGCCTCCACCAGTGATTCAGGCCAGCAGGTGACCCAGCCATCTGAAATTTAGCAAGGATTCCTT
CCTAAAGGCTGGGAAGTCCGGCATGCACCAATGGGAGGCCTTTCTTTATTGACCACAACACTAAAACCA
CCACCTGGGAAGATCCAAGATTGAAATTCAGCCCATCTGAGAGGAAAGACATCACTTGATACTCCAA
TGATCTAGGGCCTTACCTCCAGGATGGGAAGAGAGAAGTACACAGATGGAAGAATCTTCTACATAAAT
CACAATATAAAAAGAACAACCAATGGGAAGATCCTCGGTTGGAGAATGTAGCAATAACTGGACCAGCAGTGC
CCTACTCCAGGGATTACAAAAGAAAGTATGAGTCTTCCGAAGAAAGTTGAAGAAGCAGAATGACATTCC
AAACAAATTTGAAATGAACTTCGCCGAGCAACTGTTCTTGAAGACTCTTACCGGAGAATTATGGGTGTC
AAGAGAGCAGACTTCTGAAGGCTCGACTGTGGATTGAGTTTGTGGTGAAGGAGGATTGGATTATGGAG
GAGTTGCCAGAGAATGGTTCTTCTGATCTCAAAGGAAATGTTTAAACCTTATTATGGGTTGTTGAATA
TTCTGCTACGGACAATTATACCTACAGATAAATCCAACTCTGGATTGTGTAACGAAGATCACCTCTCT
TACTTCAAGTTTATTGGTCGGTAGCTGGAATGGCAGTTTATCATGGCAAACCTGTTGGATGGTTTTTTCA
TCCGCCCATTTTACAAGATGATGCTTCAAAACCAATAACCCTTCATGATGGAATCTGTGGATAGTGA
ATATTACAATCCCTAAGATGGATTCTTGAAAATGACCCAACAGAATTGGACCTCAGTTTTATCATAGAT
GAAGAACTTTTTGGACAGACACATCAACATGAGCTGAAAAATGGTGGATCAGAAATAGTTGTCACCAATA
AGAACAAAAGGAATATATTTATCTTGAATACAATGGCGATTTGTAAACCGAATCCAGAAGCAAAATGGC
TGCTTTTAAAGAGGGATTCTTTGAACTAATACCACAGGATCTCATCAAAATTTTTGATGAAAATGAACTA
GAGCTTCTATGTGTGGACTGGGAGATGTTGATGTGAATGACTGGAGGGAACATACAAAGTATAAAAATG
GCTACAGTGCAAATCATCAGGTTATACAGTGGTTTTGGAAGGCTGTTTTAATGATGGATTGAGAAAAAG
AATAAGATTACTTCAGTTTGTCACTGGCACATCTCGGGTGCCTATGAATGGATTTGCTGAACTATACGGT
TCAAATGGACCACAGTCAATTTACAGTTGAACAGTGGGTAATCCTGAAAAGCTGCCAAGAGCTCATACCT
GTTTTAATCGCCTGGACTTGCCACCTTATGAATCATTTGAAGAATTATGGGATAAACTTCAGATGGCAAT
TGAACACACCCAGGGCTTTGATGGAGTTGAT

ACGCGTACGCGGCCGCTCGAGCAGAACTCATCTCAGAAGAGGATCTGGCAGCAATGATATCCTGGATT
ACAAGGATGACGACGATAAGGTTTAA

Protein Sequence: >RC212738 representing NM_198400
 Red=Cloning site Green=Tags(s)

MAQSLRLHFAARRSNTYPLSETSGDDLDSHVHMCFKRPTRISTSNVVQMKLTPRQTALAPLIKENVQSQE
 RSSVPSSENVNKKSSCLQISLQPTRYSGLQSSNVLADSDDAFTCILKDGIIYSSAVVDNELNAVNDGHL
 VSSPAICSGSLSNFSTSDNGSYSSNGSDFGSCASITSGGSYTNVSISSSSYTFPPSDDTFLGGNLPDS
 TSNRSVPNRNTTPCEIFSRSTSTDPFVQDDLEHGLEIMKLPVSRNTKIPLKRYSSLVIFPRSPSTRPTS
 PTSLCTLLSKGSYQTSHQFIISPSEIAHNEDGTSAGFLSTAVNGLRLSKTICTPGEVRDIRPLHRKGS
 QKKIVLSNNTPRQTVCEKSSEGYSCVSVHFTQRKAATLDCETTNGDCKPEMSEIKLNSDSEYIKLMHRTS
 ACLPSSQNVDCQININGELERPHSQMNKHGILRRSISLGGAYPNISCLSSLKHNCCKGGPSQLLIKFA
 GNEGKVDNL SRDSNRDCTNELSNSCKPGWVLDQPDAAACHLQQQEPSPPLPGWEERQDILGRYYVNH
 SRRTQWKRPTQDNL TDAENGNLQAQRAFTTRRQISEETESVDNRESSENWEI IREDEATMYSNQAFP
 SPPPSSNLDVPTHLAEELNARLTIFGNSAVSQPASSNHSRRGSLQAYTFEEQPTLPVLLPTSSGLPPG
 WEEKQDERGRSYVDHNSRTTWTWKPTVQATVETSQLTSSQSSAGPQSQASTSDSQQVTPQSEIEQGFL
 PKGWEVRHAPNGRPFIDHNTKTTTWEDPRLKIPAHLRGKTSLDTSNDLGPLPGWEERTHTDGRIFYIN
 HNIKRTQWEDPRELVAITGPAVPYSRDYKRKYEFFRRKLLKQNDIPNKFEMKLRRATVLEDSYRRIMGV
 KRADFLKARLWIEFDGEKGLDYGGVAREWFFLISKEMFNPHYGLFEYSATDNYTLQINPNSGLCNEDHLS
 YFKFIGRVAGMAYVHGKLLDGGFIRPFYKMLLHKPITLHDMESVDSEYNSLRWILENDPTELDLRFIID
 EELFGQTHQHELKNGGSEIVVTNKNKKEYIYLVIQWRFVNRIQKQMAAFKEGFELIPQDLIKIFDENEL
 ELLMCGLGDVDVNDWREHTKYKNGYSANHQVIQWFWKAVLMMDSEKIRILLQFVTGTSRVPMMNGFAELYG
 SNGPQSF TVEQWGTPPEKLPRAHTCFNRLDLPPYESFEELWDKLQMAIENTQGFQDGV

TRTRPLEQKLISEEDLAANDILDYKDDDDKV

Chromatograms: https://cdn.origene.com/chromatograms/mg4916_e10.zip

Restriction Sites: SgfI-MluI

Cloning Scheme:

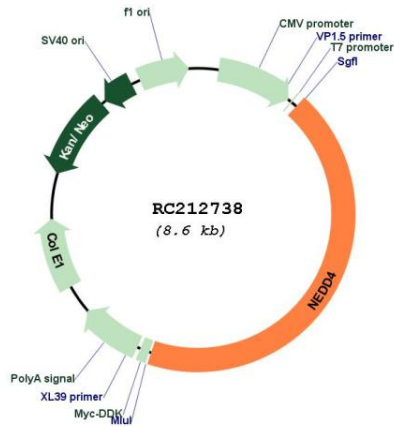


ACCN: NM_198400

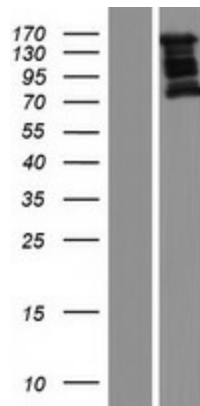
ORF Size: 3741 bp

OTI Disclaimer:	The molecular sequence of this clone aligns with the gene accession number as a point of reference only. However, individual transcript sequences of the same gene can differ through naturally occurring variations (e.g. polymorphisms), each with its own valid existence. This clone is substantially in agreement with the reference, but a complete review of all prevailing variants is recommended prior to use. More info
OTI Annotation:	This clone was engineered to express the complete ORF with an expression tag. Expression varies depending on the nature of the gene.
Components:	The ORF clone is ion-exchange column purified and shipped in a 2D barcoded Matrix tube containing 10ug of transfection-ready, dried plasmid DNA (reconstitute with 100 ul of water).
Reconstitution Method:	<ol style="list-style-type: none"> 1. Centrifuge at 5,000xg for 5min. 2. Carefully open the tube and add 100ul of sterile water to dissolve the DNA. 3. Close the tube and incubate for 10 minutes at room temperature. 4. Briefly vortex the tube and then do a quick spin (less than 5000xg) to concentrate the liquid at the bottom. 5. Store the suspended plasmid at -20°C. The DNA is stable for at least one year from date of shipping when stored at -20°C.
RefSeq:	NM_198400.3
RefSeq Size:	7024 bp
RefSeq ORF:	3744 bp
Locus ID:	4734
UniProt ID:	P46934
Cytogenetics:	15q21.3
Protein Families:	Druggable Genome
Protein Pathways:	Endocytosis, Ubiquitin mediated proteolysis
MW:	140.7 kDa
Gene Summary:	This gene is the founding member of the NEDD4 family of HECT ubiquitin ligases that function in the ubiquitin proteasome system of protein degradation. The encoded protein contains an N-terminal calcium and phospholipid binding C2 domain followed by multiple tryptophan-rich WW domains and, a C-terminal HECT ubiquitin ligase catalytic domain. It plays critical role in the regulation of a number of membrane receptors, endocytic machinery components and the tumor suppressor PTEN. [provided by RefSeq, Jul 2016]

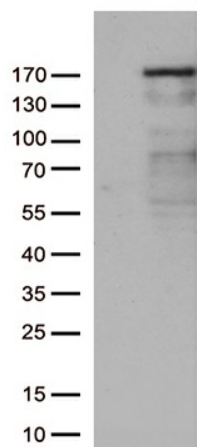
Product images:



Circular map for RC212738



Western blot validation of overexpression lysate (Cat# [LY405051]) using anti-DDK antibody (Cat# [TA50011-100]). Left: Cell lysates from untransfected HEK293T cells; Right: Cell lysates from HEK293T cells transfected with RC212738 using transfection reagent MegaTran 2.0 (Cat# [TT210002]).



HEK293T cells were transfected with the pCMV6-ENTRY control (Cat# [PS100001], Left lane) or pCMV6-ENTRY NEDD4 (Cat# RC212738, Right lane) cDNA for 48 hrs and lysed. Equivalent amounts of cell lysates (5 ug per lane) were separated by SDS-PAGE and immunoblotted with anti-NEDD4 (Cat# [TA812642])(1:500). Positive lysates [LY405051] (100ug) and [LC405051] (20ug) can be purchased separately from OriGene.