

## Product datasheet for RC212737

### DcR3 (TNFRSF6B) (NM\_032945) Human Tagged ORF Clone

#### Product data:

Product Type:	Expression Plasmids
Product Name:	DcR3 (TNFRSF6B) (NM_032945) Human Tagged ORF Clone
Tag:	Myc-DDK
Symbol:	DcR3
Synonyms:	DCR3; decoy receptor 3; DJ583P15.1.1; M68; OTTHUMP00000031583; TR6; tumor necrosis factor receptor superfamily, member 6b; tumor necrosis factor receptor superfamily, member 6b, decoy
Mammalian Cell Selection:	Neomycin
Vector:	pCMV6-Entry (PS100001)
E. coli Selection:	Kanamycin (25 ug/mL)
ORF Nucleotide Sequence:	>RC212737 ORF sequence Red=Cloning site Blue=ORF Green=Tags(s)

TTTTGTAATACGACTCACTATAGGGCGGCCGGAATTCGTCGACTGGATCCGGTACCGAGGAGATCTGCC  
GCCCGCATCGCC

ATGAGGGCGCTGGAGGGCCAGGCCTGTCGCTGCTGTGCCTGGTGTGGCGCTGCCTGCCCTGCTGCCGG  
TGCCGGCTGTACGCGGAGTGGCAGAAACACCCACCTACCCCTGGCGGGACGCAGAGACAGGGGAGCGGCT  
GGTGTGCGCCAGTGCCCCCAGGCACCTTTGTGCAGCGCCGTGCCGCCGAGACAGCCCCACGACGTGT  
GGCCCGTGTCCACCGCGCCACTACACGCAGTTCTGGAACCTGGAGCGCTGCCGCTACTGCAACGTCC  
TCTGCGGGGAGCGTGAGGAGGAGGCACGGGCTTGCCACGCCACCCACAACCGTGCCTGCCGCTGCCGCAC  
CGGCTTCTCGCGCACGCTGGTTTCTGCTTGGAGCACGCATCGTGTCCACCTGGTCCGGCGCTGATTGCC  
CCGGGCACCCCCAGCCAGAACACGCAGTGCCAGCCGTGCCCCCCAGGCACCTTCTCAGCCAGCAGCTCCA  
GCTCAGAGCAGTGCCAGCCCCACGCAACTGCACGGCCCTGGGCCTGGCCCTCAATGTGCCAGGCTCTTC  
CTCCCATGACACCCTGTGCACCAGCTGCACTGGCTTCCCCTCAGCACCAGGGTACCAGGAGCTGAGGAG  
TGTGAGCGTGCCGTCATCGACTTTGTGGCTTCCAGGACATCTCCATCAAGAGGCTGCAGCGGCTGCTGC  
AGGCCCTCGAGGCCCGGAGGGCTGGGGTCCGACACCAAGGGCGGGCCGCGCGGCCTTGCAGCTGAAGCT  
GCGTCCGGCGGCTCACGGAGCTCCTGGGGCGCAGGACGGGGCGCTGCTGGTGCGGCTGCTGCAGGCGCTG  
CGCGTGGCCAGGATGCCCGGGCTGGAGCGGAGCGTCCGTGAGCGCTTCTCCCTGTGCAC

ACGCGTACGCGGCCGCTCGAGCAGAACTCATCTCAGAAGAGGATCTGGCAGCAAATGATATCCTGGATT  
ACAAGGATGACGACGATAAGGTTTAA



[View online »](#)

**Protein Sequence:** >RC212737 protein sequence  
Red=Cloning site Green=Tags(s)

MRALEGPGLSLLCLVLALPALLPVPVAVRGVAETPTYPWRDAETGERLVCAQCPPGTFVQRPCRDRSPTTC  
 GPCPPRHYTQFWNYLERCRYCNVLCGEREEEARACHATHNRACRCRTGFFAHAGFCLEHASCPPGAGVIA  
 PGTPSQNTQCQPCPPGTF SASSSSSEQCQPHRNCTALGLALNVPGSSSHDTLCTSCTGFPLSTRVPGAEE  
 CERAVIDFVAFQDISIKRLQRLQLALEAPEGWGPTPRAGRAALQLKLRRLTELLGAQDGALLVRLQLAL  
 RVARMPGLERSVRERFLPVH

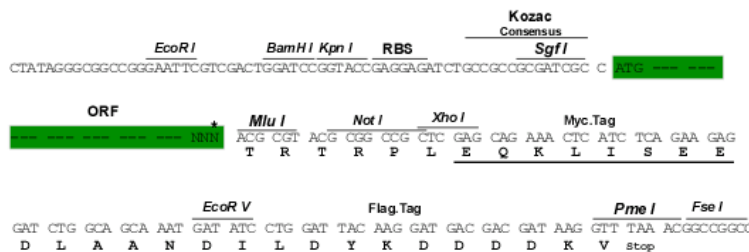
TRTRPLEQKLISEEDLAANDILDYKDDDDKV

**Chromatograms:** [https://cdn.origene.com/chromatograms/mk6309\\_h09.zip](https://cdn.origene.com/chromatograms/mk6309_h09.zip)

**Restriction Sites:** SgfI-MluI

**Cloning Scheme:**

Cloning sites used for ORF Shuttling:



\* The last codon before the Stop codon of the ORF

**ACCN:** NM\_032945

**ORF Size:** 900 bp

**OTI Disclaimer:** The molecular sequence of this clone aligns with the gene accession number as a point of reference only. However, individual transcript sequences of the same gene can differ through naturally occurring variations (e.g. polymorphisms), each with its own valid existence. This clone is substantially in agreement with the reference, but a complete review of all prevailing variants is recommended prior to use. [More info](#)

**OTI Annotation:** This clone was engineered to express the complete ORF with an expression tag. Expression varies depending on the nature of the gene.

**Components:** The ORF clone is ion-exchange column purified and shipped in a 2D barcoded Matrix tube containing 10ug of transfection-ready, dried plasmid DNA (reconstitute with 100 ul of water).

**Reconstitution Method:**

1. Centrifuge at 5,000xg for 5min.
2. Carefully open the tube and add 100ul of sterile water to dissolve the DNA.
3. Close the tube and incubate for 10 minutes at room temperature.
4. Briefly vortex the tube and then do a quick spin (less than 5000xg) to concentrate the liquid at the bottom.
5. Store the suspended plasmid at -20°C. The DNA is stable for at least one year from date of shipping when stored at -20°C.

**RefSeq:** [NM\\_032945.2](#), [NP\\_116563.1](#)

**RefSeq Size:** 1458 bp

**RefSeq ORF:** 902 bp

**Locus ID:** 8771

**Cytogenetics:** 20q13.33

**Domains:** TNFR

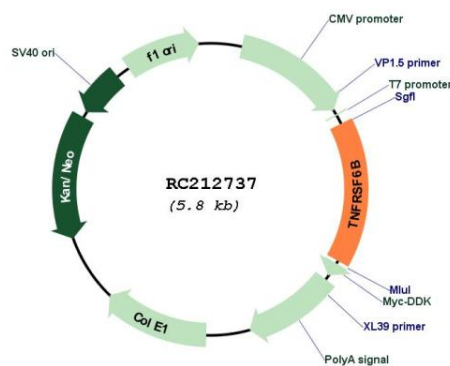
**Protein Families:** Secreted Protein

**Protein Pathways:** Cytokine-cytokine receptor interaction

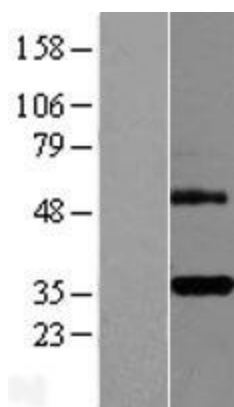
**MW:** 32.7 kDa

**Gene Summary:** This gene belongs to the tumor necrosis factor receptor superfamily. The encoded protein is postulated to play a regulatory role in suppressing FasL- and LIGHT-mediated cell death. It acts as a decoy receptor that competes with death receptors for ligand binding. Over-expression of this gene has been noted in gastrointestinal tract tumors. Read-through transcription into this gene from the neighboring upstream gene, which encodes regulator of telomere elongation helicase 1 (RTEL1), generates a non-coding transcript. [provided by RefSeq, Feb 2011]

### Product images:



Circular map for RC212737



Western blot validation of overexpression lysate (Cat# [LY409832]) using anti-DDK antibody (Cat# [TA50011-100]). Left: Cell lysates from untransfected HEK293T cells; Right: Cell lysates from HEK293T cells transfected with RC212737 using transfection reagent MegaTran 2.0 (Cat# [TT210002]).