

## Product datasheet for RC212733

### Nebulette (NEBL) (NM\_213569) Human Tagged ORF Clone

#### Product data:

Product Type:	Expression Plasmids
Product Name:	Nebulette (NEBL) (NM_213569) Human Tagged ORF Clone
Tag:	Myc-DDK
Symbol:	Nebulette
Synonyms:	bA165O3.1; C10orf113; LASP2; LNEBL
Mammalian Cell Selection:	Neomycin
Vector:	pCMV6-Entry (PS100001)
E. coli Selection:	Kanamycin (25 ug/mL)
ORF Nucleotide Sequence:	>RC212733 representing NM_213569 Red=Cloning site Blue=ORF Green=Tags(s)

TTTTGTAATACGACTCACTATAGGGCGCCGGGAATTCGTCGACTGGATCCGGTACCGAGGAGATCTGCC  
GCC**CGATCGCC**

ATGAACCCCAAGTGCGCCGTTGCGGAAAAGTCGTGTATCCCACCGAGAAAGTCAACTGCCTGGATAAGT  
ATTGGCATAAAGGATGTTTCCATTGTGAGGTCTGCAAGATGGCACTCAACATGAACAACACAAAGGCTA  
TGAAAAGAAGCCCTATTGTAATGCACACTACCCGAAGCAGTCCTTACCACGGTGGCAGATACACCTGAA  
AATCTTCGCCTGAAGCAGCAAAGTGAATTGCAGAGTCAGGTCAAGTACAAAAGAGATTTTGAAGAAAGCA  
AAGGGAGGGGCTTCAGCATCGTCACGGACACTCCTGAGCTACAGAGACTGAAGAGGACTCAGGAGCAAAT  
CAGTAATGTAATAACCATGAAGATTTTGAACAAAGGGGAGAGGCTTTACTCCCGTGGGACGAT  
CCTGTGACAGAGAGAGTGAGGAAGAACCACCCAGGTGGTCAGCGATGCTGCCTATAAAGGGGTCCACCCTC  
ACATCGTGGAGATGGACAGGAGACCTGGAATCATTGTTGCACCTGTTCTTCCCGGAGCCTATCAGCAAAG  
CCATTTCCCAAGGCTATGGCTACATGCACCAGACCAGTGTGTATCCATGAGATCAATGCAGCATTACCA  
AATCTAAGGACCTACCGAGCCATGTACGATTACAGTGCCAGGATGAAGACGAGGTCTCCTTTAGAGACG  
GCGACTACATCGTCAACGTGCAGCCTATTGACGATGGCTGGATGTACGGCACAGTGCAGAGAACAGGGAG  
AACAGGAATGCTCCAGCGAATTACATTGAGTTTGTTAAT

**ACGCGT**ACGCGGCCGCTCGAGCAGAAACTCATCTCAGAAGAGGATCTGGCAGCAAATGATATCCTGGATT  
ACAAGGATGACGACGATAAGGTTTAA



**Protein Sequence:** >RC212733 representing NM\_213569  
Red=Cloning site Green=Tags(s)

MNPQCARGKVVYPTEKVNCLDKYW HKGCFHCEVCKMALNMN NYKGYEKKPYCNAHPKQSF TTVADTPE  
 NLR LKQQSELQSQVKYKRD FEESKGRGFSIVTDTP ELQRLKRTQEQISNVKYHEDFEKTKGRGFTP VVDD  
 PVTERVRKNTQVVSDAAYKGVHPHIVEMDRRPGIIVAPVLP GAYQQSHSQGYGYMHQT SVSSMRSMQHSP  
 NLR TYRAMYDYS AQDEDEV SFRDGDYIVNVQPI DDGWMYGT VQRTGRTGMLPANYIEFVN

TRTRPLEQKLISEEDLAANDILDYKDDDDKV

**Chromatograms:** [https://cdn.origene.com/chromatograms/mk8022\\_g09.zip](https://cdn.origene.com/chromatograms/mk8022_g09.zip)

**Restriction Sites:** SgfI-MluI

**Cloning Scheme:**

Cloning sites used for ORF Shuttling:



\* The last codon before the Stop codon of the ORF

**ACCN:** NM\_213569

**ORF Size:** 810 bp

**OTI Disclaimer:** The molecular sequence of this clone aligns with the gene accession number as a point of reference only. However, individual transcript sequences of the same gene can differ through naturally occurring variations (e.g. polymorphisms), each with its own valid existence. This clone is substantially in agreement with the reference, but a complete review of all prevailing variants is recommended prior to use. [More info](#)

**OTI Annotation:** This clone was engineered to express the complete ORF with an expression tag. Expression varies depending on the nature of the gene.

**Components:** The ORF clone is ion-exchange column purified and shipped in a 2D barcoded Matrix tube containing 10ug of transfection-ready, dried plasmid DNA (reconstitute with 100 ul of water).

**Reconstitution Method:**

1. Centrifuge at 5,000xg for 5min.
2. Carefully open the tube and add 100ul of sterile water to dissolve the DNA.
3. Close the tube and incubate for 10 minutes at room temperature.
4. Briefly vortex the tube and then do a quick spin (less than 5000xg) to concentrate the liquid at the bottom.
5. Store the suspended plasmid at -20°C. The DNA is stable for at least one year from date of shipping when stored at -20°C.

**Note:** Plasmids are not sterile. For experiments where strict sterility is required, filtration with 0.22um filter is required.

**RefSeq:** [NM\\_213569.2](#), [NP\\_998734.1](#)

**RefSeq Size:** 1245 bp

**RefSeq ORF:** 813 bp

**Locus ID:** 10529

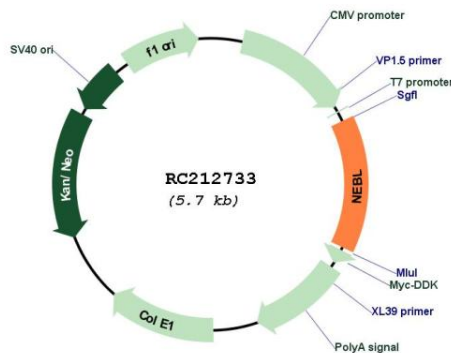
**UniProt ID:** [O76041](#)

**Cytogenetics:** 10p12.31

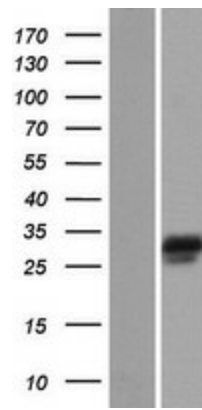
**MW:** 31 kDa

**Gene Summary:** This gene encodes a nebulin like protein that is abundantly expressed in cardiac muscle. The encoded protein binds actin and interacts with thin filaments and Z-line associated proteins in striated muscle. This protein may be involved in cardiac myofibril assembly. A shorter isoform of this protein termed LIM nebullette is expressed in non-muscle cells and may function as a component of focal adhesion complexes. Alternate splicing results in multiple transcript variants. [provided by RefSeq, Mar 2010]

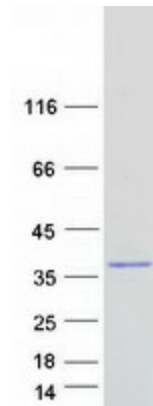
### Product images:



Circular map for RC212733



Western blot validation of overexpression lysate (Cat# [LY403905]) using anti-DDK antibody (Cat# [TA50011-100]). Left: Cell lysates from untransfected HEK293T cells; Right: Cell lysates from HEK293T cells transfected with RC212733 using transfection reagent MegaTran 2.0 (Cat# [TT210002]).



Coomassie blue staining of purified NEBL protein (Cat# [TP312733]). The protein was produced from HEK293T cells transfected with NEBL cDNA clone (Cat# RC212733) using MegaTran 2.0 (Cat# [TT210002]).