

Product datasheet for RC212730

CYBC1 (NM_001100408) Human Tagged ORF Clone

Product data:

Product Type: Expression Plasmids
Product Name: CYBC1 (NM_001100408) Human Tagged ORF Clone
Tag: Myc-DDK
Symbol: CYBC1
Synonyms: C17orf62; CGD5; Eros
Mammalian Cell Selection: Neomycin
Vector: pCMV6-Entry (PS100001)
E. coli Selection: Kanamycin (25 ug/mL)
ORF Nucleotide Sequence: >RC212730 representing NM_001100408
Red=Cloning site Blue=ORF Green=Tags(s)

TTTTGTAATACGACTCACTATAGGGCGGCCGGAATTCGTCGACTGGATCCGGTACCGAGGAGATCTGCC
GCC**CGATCGCC**

ATGTACCTGCAGGTGGAGACCCGCACCAGCTCCCGCTCCATCTGAAGAGGGCTCCAGGCATCCGGTCTT
GGTCCCTGCTGGTTGATAGCCTGGGCTGGAAGCTCTTCTACGTACAGGCTGCCTGTTTGTGGCTGTGCA
GAACTGGAGGACTGGGAGGAAGCCATCTTCGACAAGAGCACAGGAAGGTTGTTTTGAAGACGTTTCAGC
CTCTACAAGAAGCTGCTGACTCTTTTCAGAGCTGGCCACGACCAGGTGGTGGTCTGCTCCATGATGTCC
GTGATGTGAGCGTGGAGGAGGAGAAGGTCGGTACTTCGGGAAAGGCTACATGGTGGTGTCCGGCTTGC
GACGGGCTTCTCCACCCCTCACGCAGAGTGCAGTCATGGGCCACCGCAGTGATGTGGAAGCCATCGCC
AAGCTCATCACCAGCTTCTGGAGCTGCATGCCTTGAGAGCCCCACAGAGCTGTCTCAGAGCAGCGACA
GTGAGGCCGGTGACCCTGCAAGCCAGAGC

ACGCGTACGCGGCCGCTCGAGCAGAACTCATCTCAGAAGAGGATCTGGCAGCAAATGATATCCTGGATT
ACAAGGATGACGACGATAAGGTTTAA

Protein Sequence: >RC212730 representing NM_001100408
Red=Cloning site Green=Tags(s)

MYLQVETRTSSRLHLKRAPGIRSWLLVDSLGWKLFYVTGCLFVAVQNLEDWEEAIFDKSTGKVVLTFS
LYKLLTLFRAGHDQVVLLHDVRDVSVEEEKVRYFGKGYMVVLRATGFSHPLTQSAVMGHRSDVEAIA
KLITSFLELHCLSPTELSQSSDSEAGDPASQS

TRTRPLEQKLISEEDLAANDILDYKDDDDKV

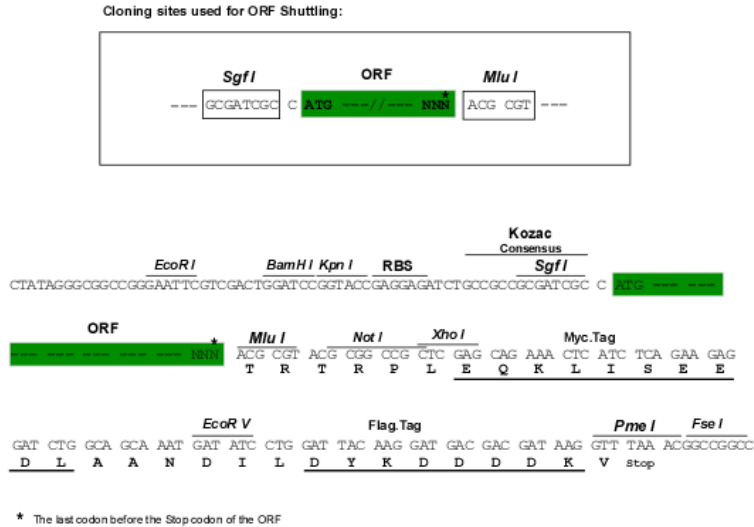
Chromatograms: https://cdn.origene.com/chromatograms/ja1462_a10.zip



[View online »](#)

Restriction Sites: SgfI-MluI

Cloning Scheme:



ACCN: NM_001100408

ORF Size: 519 bp

OTI Disclaimer: The molecular sequence of this clone aligns with the gene accession number as a point of reference only. However, individual transcript sequences of the same gene can differ through naturally occurring variations (e.g. polymorphisms), each with its own valid existence. This clone is substantially in agreement with the reference, but a complete review of all prevailing variants is recommended prior to use. [More info](#)

OTI Annotation: This clone was engineered to express the complete ORF with an expression tag. Expression varies depending on the nature of the gene.

Components: The ORF clone is ion-exchange column purified and shipped in a 2D barcoded Matrix tube containing 10ug of transfection-ready, dried plasmid DNA (reconstitute with 100 ul of water).

Reconstitution Method:

1. Centrifuge at 5,000xg for 5min.
2. Carefully open the tube and add 100ul of sterile water to dissolve the DNA.
3. Close the tube and incubate for 10 minutes at room temperature.
4. Briefly vortex the tube and then do a quick spin (less than 5000xg) to concentrate the liquid at the bottom.
5. Store the suspended plasmid at -20°C. The DNA is stable for at least one year from date of shipping when stored at -20°C.

RefSeq: [NM_001100408.3](#)

RefSeq Size: 2084 bp

RefSeq ORF: 522 bp

Locus ID: 79415

UniProt ID: [Q9BQA9](#)

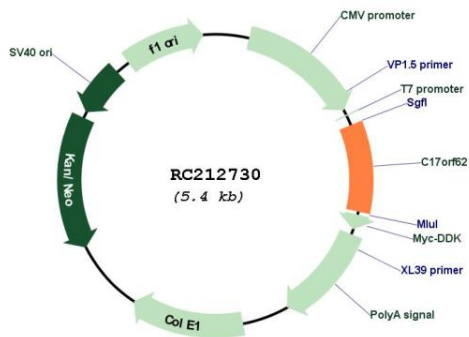
Cytogenetics: 17q25.3

Protein Families: Transmembrane

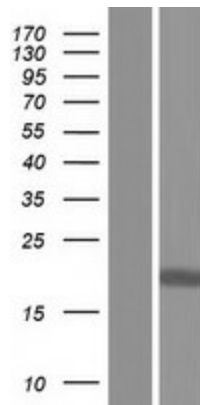
MW: 19.3 kDa

Gene Summary: Necessary for a stable expression of the CYBA and CYBB subunits of the cytochrome b-245 heterodimer. Controls the phagocyte respiratory burst and is essential for innate immunity. [UniProtKB/Swiss-Prot Function]

Product images:



Circular map for RC212730



Western blot validation of overexpression lysate (Cat# [LY420252]) using anti-DDK antibody (Cat# [TA50011-100]). Left: Cell lysates from untransfected HEK293T cells; Right: Cell lysates from HEK293T cells transfected with RC212730 using transfection reagent MegaTran 2.0 (Cat# [TT210002]).