

Product datasheet for RC212726

GMPPA (NM_205847) Human Tagged ORF Clone

Product data:

Product Type: Expression Plasmids
Product Name: GMPPA (NM_205847) Human Tagged ORF Clone
Tag: Myc-DDK
Symbol: GMPPA
Synonyms: AAMR
Mammalian Cell Selection: Neomycin
Vector: pCMV6-Entry (PS100001)
E. coli Selection: Kanamycin (25 ug/mL)
ORF Nucleotide Sequence: >RC212726 ORF sequence
Red=Cloning site Blue=ORF Green=Tags(s)

TTTTGTAATACGACTCACTATAGGGCGCCGGGAATTCGTCGACTGGATCCGGTACCGAGGAGATCTGCC
GCC**CGATCGCC**

ATGCTCAAAGCGGTGATCCTGATTGGAGGCCCTCAAAGGGAACCTCGCTCAGACCTTTGTCTTTGAGG
TGCCCAAACCATTTCTGTGGCAGGGGTCCCTATGATCCAACACCATATTGAAGCCTGTGCCAGGT
CCCTGGAATGCAGGAGATTCTGCTATTGGCTTCTACCAACCTGATGAGCCCTCACCCAGTTCTAGAA
GCCGCCAGCAGGAGTTAACCTTCCAGTCAGGTACCTGCAGGAATTTGCCCCCTAGGCACAGGGGTG
GTCTTTACCATTTTCGAGACCAGATCCTGGCTGGGAGCCCGAGGCATTCTTCGTGCTCAATGCTGATGT
CTGCTCCGACTTCCCCTTGAGTGTATGTTGGAAGCCACCGACGCCAGGTCACCTTTCTACTCCTT
GGCACTACGGCTAACAGGACGCAATCCCTCAACTACGGCTGCATCGTTGAGAATCCACAGACACACGAGG
TATTGCACTATGTGGAGAAACCCAGCACATTTATCAGTGACATCAACTGCGGCATCTACCTCTTTTC
TCCTGAAGCCTTGAAGCCTTTCGGGATGTCTCCAGCGTAATCAGCAGGATGGGCAATTGGAGGACTCA
CCAGGCTTGTGGCCAGGGGCAGGTACCATCCGCTAGAGCAGGATGTGTTTTAGCCCTGGCAGGGCAGG
GCCAGATATACGTGCATCTCACTGATGGTATCTGGAGTCAGATCAAGTCCGAGGTTCCAGCCCTACGC
CTCCCCTCTACCTGAGCCGATACCAGGACACTACCCAGAACGGCTGGCCAAGCACACCCAGGGGGC
CCATGGATCCGAGGGAATGTGTACATCCACCCGACCGCAAGGTGGCCCTCGGCTGTGCTGGCCCA
ACGTCTCCATCGGGAAGGGGTGACCGTGGGTGAGGGTGTGCGGCTCCGGGAGAGCATCGTCTCCATGG
AGCCACTTTGCAGGAGCACAGTGTGTTCTGCATAGCATCGTGGGCTGGGGAGCACCGTGGGACGCTGG
GCCCGGTGGAGGTTACCCAGTGACCCTAACCCCAACGATCCCGAGCCCGCATGGACAGTGAGAGCC
TCTTCAAGGACGGGAAGCTGCTGCCTGCTATCACCATCCTGGGCTGCCGAGTCCGGATCCCTGCCGAGGT
GCTCATCTGAATCGATTGTTCTGCCACACAAGGAGCTGAGCCGAAGCTTACCAACAGATCATCCTC

ACGCGTACGCGGCCGCTCGAGCAGAACTCATCTCAGAAGAGGATCTGGCAGCAATGATATCCTGGATT
ACAAGGATGACGACGATAAGGTTTAA



[View online »](#)

Reconstitution Method:

1. Centrifuge at 5,000xg for 5min.
2. Carefully open the tube and add 100ul of sterile water to dissolve the DNA.
3. Close the tube and incubate for 10 minutes at room temperature.
4. Briefly vortex the tube and then do a quick spin (less than 5000xg) to concentrate the liquid at the bottom.
5. Store the suspended plasmid at -20°C. The DNA is stable for at least one year from date of shipping when stored at -20°C.

RefSeq: [NM_205847.3](#)

RefSeq Size: 1845 bp

RefSeq ORF: 1263 bp

Locus ID: 29926

UniProt ID: [Q96IJ6](#)

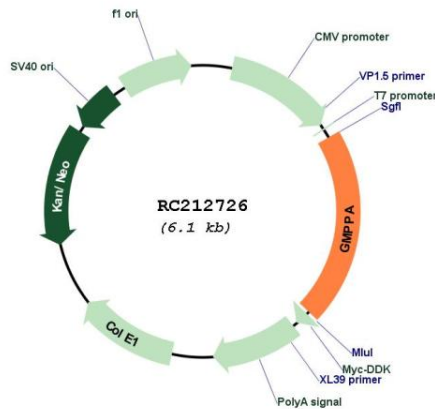
Cytogenetics: 2q35

Protein Pathways: Amino sugar and nucleotide sugar metabolism, Fructose and mannose metabolism, Metabolic pathways

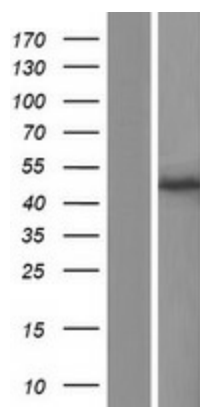
MW: 46.3 kDa

Gene Summary: This gene is thought to encode a GDP-mannose pyrophosphorylase. This enzyme catalyzes the reaction which converts mannose-1-phosphate and GTP to GDP-mannose which is involved in the production of N-linked oligosaccharides. [provided by RefSeq, Jul 2008]

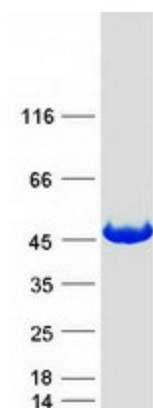
Product images:



Circular map for RC212726



Western blot validation of overexpression lysate (Cat# [LY403717]) using anti-DDK antibody (Cat# [TA50011-100]). Left: Cell lysates from untransfected HEK293T cells; Right: Cell lysates from HEK293T cells transfected with RC212726 using transfection reagent MegaTran 2.0 (Cat# [TT210002]).



Coomassie blue staining of purified GMPPA protein (Cat# [TP312726]). The protein was produced from HEK293T cells transfected with GMPPA cDNA clone (Cat# RC212726) using MegaTran 2.0 (Cat# [TT210002]).