

## Product datasheet for **RC212725**

### **LRRN3 (NM\_001099660) Human Tagged ORF Clone**

#### **Product data:**

Product Type:	Expression Plasmids
Product Name:	LRRN3 (NM_001099660) Human Tagged ORF Clone
Tag:	Myc-DDK
Symbol:	LRRN3
Synonyms:	FIGLER5; NLRR-3; NLRR3
Mammalian Cell Selection:	Neomycin
Vector:	pCMV6-Entry (PS100001)
E. coli Selection:	Kanamycin (25 ug/mL)



[View online »](#)

**ORF Nucleotide Sequence:**

>RC212725 ORF sequence  
 Red=Cloning site Blue=ORF Green=Tags(s)

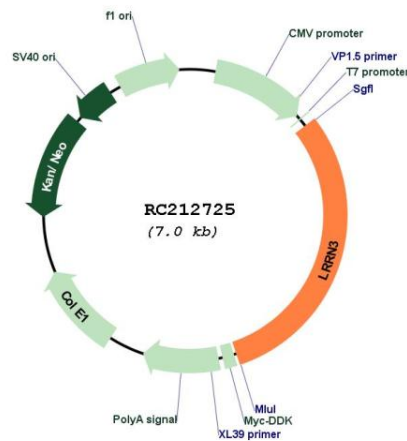
TTTTGTAATACGACTCACTATAGGGCGGCCGGAATTCGTCGACTGGATCCGGTACCGAGGAGATCTGCC  
 GCC**CGCATCGCC**

ATGAAGGACATGCCACTCCGAATTCATGTGCTACTTGGCCTAGCTATCACTACACTAGTACAAGCTGTAG  
 ATAAAAAGTGGATTGTCCACGGTTATGTACGTGTGAAATCAGGCCTTGGTTTACACCCAGATCCATTTA  
 TATGGAAGCATCTACAGTGGATTGTAATGATTTAGGTCTTTTAACTTTCCAGCCAGATTGCCAGCTAAC  
 ACACAGATTCTTCTCCTACAGACTAACAAATATTGCAAAAATTGAATACTCCACAGACTTTCCAGTAAACC  
 TTAGTACGCTGGATTTATCTCAAAACAATTTATCTTCAGTCACCAATATTAATGTAAAAAGATGCCTCA  
 GCTCCTTCTGTGACTAGAGGAAAACAACTTACTGAACTGCCTGAAAAATGTCTGTCCGAACTGAGC  
 AACTTACAAGAACTCTATTAATCACAACTTGCTTTCTACAATTTACCTGGAGCCTTTATTGGCTAC  
 ATAATCTTCTCGACTTCATCTCAATTCAAATAGATTGCAGATGATCAACAGTAAGTGGTTTGATGCTCT  
 TCCAAATCTAGAGATTCTGATGATTGGGAAAAATCCAATTATCAGAATCAAAGACATGAACTTTAAGCCT  
 CTATCAATCTTCGACGCTGGTTATAGCTGGTATAAACCTCACAGAAATACCAGATAACGCCTTGGTTG  
 GACTGGAAAACTTAGAAAGCATCTCTTTTACGATAACAGGCTTATTAAGTACCCCATGTTGCTCTTCA  
 AAAAGTTGAAATCTCAAATTTTGGATCTAAATAAAATCCTATTAATAGAATACGAAGGGGTGATTTT  
 AGCAATATGCTACACTTAAAAGAGTTGGGGATAAATAATGCCTGAGCTGATTTCCATCGATAGCTTG  
 CTGTGGATAACCTGCCAGATTTAAGAAAAATAGAAGCTACTAACAAACCCTAGATTGTCTTACATTCACCC  
 CAATGCATTTTTCAGACTCCCAAGCTGGAATCACTCATGCTGAACAGCAATGCTCTCAGTGCCTGTAC  
 CATGGTACCATTGAGTCTCTGCCAAACCTCAAGGAAATCAGCATACACAGTAACCCCATCAGGTGTGAT  
 GTGTCATCCGTTGGATGAACATGAACAAAACCAACATTCGATTGATGGAGCCAGATTCACTGTTTTGCGT  
 GGACCCACCTGAATTCGAAGGTGAGAATGTTCCGCAAGTGCATTTTCAGGGACATGATGGAATTTGTCTC  
 CCTCTTATAGCTCCTGAGAGCTTTCCTTCTAATCTAAATGTAGAAGCTGGGAGCTATGTTTCCTTCACT  
 GTAGAGCTACTGCAGAACCACAGCCTGAAATCTACTGGATAACACCTTCTGGTCAAAAACTTTGCCTAA  
 TACCCTGACAGACAAGTTCTATGTCCATTCTGAGGGAACACTAGATATAAATGGCGTAACTCCCAAAGAA  
 GGGGGTTTATATACTTGTATAGCAACTAACCTAGTTGGCGCTGACTTGAAGTCTGTTATGATCAAAGTGG  
 ATGGATCTTTTCCACAAGATAACAATGGCTCTTTGAATATTAATAAAGAGATATTCATGCCAATTCAGT  
 TTTGGTGTCTGGAAAGCAAGTTCTAAAATCTCAAATCTAGTGTAAATGGACAGCCTTTGTCAAGACT  
 GAAAATCTCATGCTGCGCAAAGTGTCTGAATACCATCTGATGTCAAGGTATATAATCTTACTCATCTGA  
 ATCCATCAACTGAGTATAAAATTTGATTTGATATTTCCACCATCTATCAGAAAAACAGAAAAAATGTGT  
 AAATGTACCACCAAAGTTTGCACCCTGATCAAAAAGAGTATGAAAAGAATAATACCACAACACTTATG  
 GCCTGTCTGGAGGCCTTCTGGGGATTATTGGTGTGATATGTCTTATCAGCTGCCTCTCTCCAGAAATGA  
 ACTGTGATGGTGGACACAGCTATGTGAGGAATTACTTACAGAAACCAACCTTTGCATTAGGTGAGCTTTA  
 TCCTCCTGTATAAATCTCTGGGAAGCAGGAAAAGAAAAAGTACATCACTGAAAGTAAAAGCAACTGTT  
 ATAGGTTTACCAACAAATATGTCC

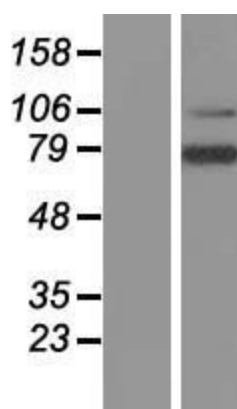
**ACGCGT**ACGCGGCCGCTCGAGCAGAACTCATCTCAGAAGAGGATCTGGCAGCAAATGATATCCTGGATT  
 ACAAGGATGACGACGATAAGGTTTAA



<b>Components:</b>	The ORF clone is ion-exchange column purified and shipped in a 2D barcoded Matrix tube containing 10ug of transfection-ready, dried plasmid DNA (reconstitute with 100 ul of water).
<b>Reconstitution Method:</b>	<ol style="list-style-type: none"> <li>1. Centrifuge at 5,000xg for 5min.</li> <li>2. Carefully open the tube and add 100ul of sterile water to dissolve the DNA.</li> <li>3. Close the tube and incubate for 10 minutes at room temperature.</li> <li>4. Briefly vortex the tube and then do a quick spin (less than 5000xg) to concentrate the liquid at the bottom.</li> <li>5. Store the suspended plasmid at -20°C. The DNA is stable for at least one year from date of shipping when stored at -20°C.</li> </ol>
<b>RefSeq:</b>	<u>NM_001099660.1, NP_001093130.1</u>
<b>RefSeq Size:</b>	3744 bp
<b>RefSeq ORF:</b>	2127 bp
<b>Locus ID:</b>	54674
<b>UniProt ID:</b>	<u>Q9H3W5</u>
<b>Cytogenetics:</b>	7q31.1
<b>Protein Families:</b>	Transmembrane
<b>MW:</b>	79.5 kDa

**Product images:**


Circular map for RC212725



Western blot validation of overexpression lysate (Cat# [LY420476]) using anti-DDK antibody (Cat# [TA50011-100]). Left: Cell lysates from untransfected HEK293T cells; Right: Cell lysates from HEK293T cells transfected with [RC219836] using transfection reagent MegaTran 2.0 (Cat# [TT210002]).