

Product datasheet for RC212717

SLC35G2 (NM_001097599) Human Tagged ORF Clone

Product data:

Product Type:	Expression Plasmids
Product Name:	SLC35G2 (NM_001097599) Human Tagged ORF Clone
Tag:	Myc-DDK
Symbol:	SLC35G2
Synonyms:	TMEM22
Mammalian Cell Selection:	Neomycin
Vector:	pCMV6-Entry (PS100001)
E. coli Selection:	Kanamycin (25 ug/mL)
ORF Nucleotide Sequence:	>RC212717 ORF sequence Red=Cloning site Blue=ORF Green=Tags(s)

TTTTGTAATACGACTCACTATAGGGCGCCGGGAATTCGTCGACTGGATCCGGTACCGAGGAGATCTGCC
GCC**CGATCGCC**

ATGGATACTTCTCCCTCCAGAAAATATCCAGTTAAAAACGGGTGAAAATACATCCCAACACAGTGATGG
TGAAATATACTTCTCATTATCCCCAGCCTGGCGATGATGGATATGAAGAAATCAATGAAGGCTATGGGAA
TTTTATGGAGGAAAATCCAAAGAAAGGTCTGCTGAGTGAATGAAAAAAAAAGGGAGAGCTTTCTTTGGA
ACCATGGATACCTACCTCCACCAACAGAAGCCCAATGATCAATGAGATTGGACAATCCAGAGCTTTG
CAGAAAAAACATTTTTCAATCCGAAAAATGTGGATAGTGCTGTTGGATCTGCTTTGGCTCATGGATG
TGTAGCTTTATCACTAGGCTTGTCTGATCGGTCTAAAGTTCCATCTCTAGAAGTATTTTATCCGT
TCTGTTTTTCAGGTCTTATCTGTGTTAGTTGTGTGTTACTATGAGGAGGCCCCCTTTGGACCCAGTGGAT
ACAGATTACGACTCTTCTTTTATGGTGTATGCAATGTCATTTCTATCACTTGTGCTTATACATCATTTTT
AATAGTTCCTCCAGCAATGGGACCACTATGTGGAGAGCCACAACACAGTCTTCAGTGCATTTTGGCT
TTTTACTCGTAGATGAGAAAATGGCTTATGTTGACATGGCTACAGTTGTTTGCAGCATCTTAGGTGTT
GTCTTGCATGATCCCAAACATTGTTGATGAAGACAATCTTTGTTAAATGCCTGGAAGAAGCCTTTGG
GTACACCATGACTGTGATGGCTGGACTGACCACTGCTCTCTCAATGATAGTATACAGATCCATCAAGGAG
AAGATCAGCATGTGGACTGCACCTGTTACTTTTGGTTGGACTGGGACAATTTGGGAATATCTACTATGT
TTATTTCAAGAACCATCATCCATTAGATGGAGAACTGGAGTTATCTCATTGCTATATGTGCTGTG
TTCTACTGCAGCATTCTTAGGAGTTTATTATGCCTTGGACAAAATCCATCCAGCCTTGGTTAGCACAGTA
CAACATTTGGAGATTGTGGTAGCTATGGTCTTGCAGCTTCTCGTGTGCACATTTTCTAGCATCTATG
ATGTTTTGGAGGGTAATCATTATGATTAGTGTTTTTGCTTGTGCTGCTATAAACTTTACTGGAGGAA
TTAAGAAGGCAGGACTACCAGAAAATACTAGACTCTCCATTAA

ACGCGTACGCGGCCGCTCGAGCAGAACTCATCTCAGAAGAGGATCTGGCAGCAATGATATCTGGATT
ACAAGGATGACGACGATAAGGTTTAA



Protein Sequence: >RC212717 protein sequence
Red=Cloning site Green=Tags(s)

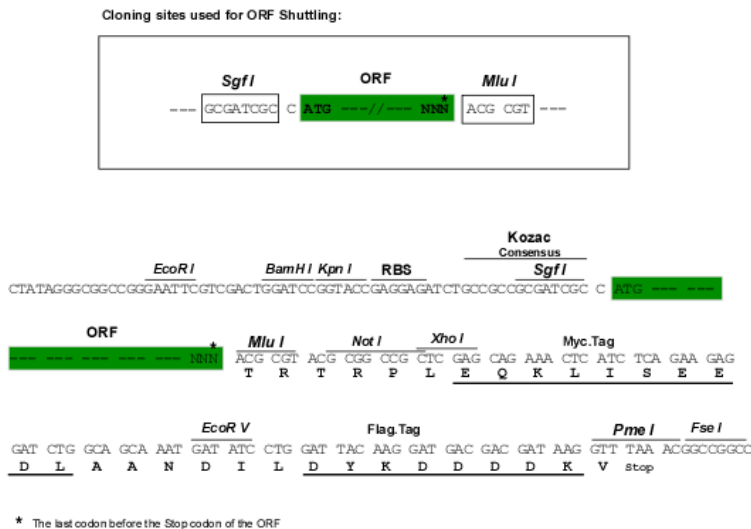
MDTSPSRKYPVKKRVIHPNTVMKYTSHYPQPGDDGYEEINEGYGNFMEENPKKGLLSEMKKKGRAFFG
 TMDTLPPPTEDPMINEIGQFQSFAEKNIFQSRKMWIVLFGSALAHGCVALITRLVSDRSKVPSELEIFIR
 SVFQVLSVLVVCYEEAPFGPSGYRLRLFFYGVCNVISITCAYTSFSIVPPSNGTTMWRATTTVFSAILA
 FLLVDEKMAYVDMATVVCSILGVCLVMIPNIVDEDNSLLNAWKEAFGYTMTVMAGLTTALSMIVYRSIKE
 KISMWTALFTFGWTGTIWIISTMFILQEPIIPLDGETWSYLIAICVCSTAAFLGVYYALDKFHPALVSTV
 QHLEIVVAMVLQLLVLHIFPSIYDVFGGVIIMISVFLAGYKLYWRNLRRQDYQEILDSPDK

TRTRPLEQKLISEEDLAANDILDYKDDDDKV

Chromatograms: https://cdn.origene.com/chromatograms/mk6537_h11.zip

Restriction Sites: SgfI-MluI

Cloning Scheme:



ACCN: NM_001097599

ORF Size: 1236 bp

OTI Disclaimer: The molecular sequence of this clone aligns with the gene accession number as a point of reference only. However, individual transcript sequences of the same gene can differ through naturally occurring variations (e.g. polymorphisms), each with its own valid existence. This clone is substantially in agreement with the reference, but a complete review of all prevailing variants is recommended prior to use. [More info](#)

OTI Annotation: This clone was engineered to express the complete ORF with an expression tag. Expression varies depending on the nature of the gene.

Components: The ORF clone is ion-exchange column purified and shipped in a 2D barcoded Matrix tube containing 10ug of transfection-ready, dried plasmid DNA (reconstitute with 100 ul of water).

Reconstitution Method:

1. Centrifuge at 5,000xg for 5min.
2. Carefully open the tube and add 100ul of sterile water to dissolve the DNA.
3. Close the tube and incubate for 10 minutes at room temperature.
4. Briefly vortex the tube and then do a quick spin (less than 5000xg) to concentrate the liquid at the bottom.
5. Store the suspended plasmid at -20°C. The DNA is stable for at least one year from date of shipping when stored at -20°C.

RefSeq: [NM_001097599.1](#), [NP_001091068.1](#)

RefSeq Size: 1814 bp

RefSeq ORF: 1239 bp

Locus ID: 80723

UniProt ID: [Q8TBE7](#)

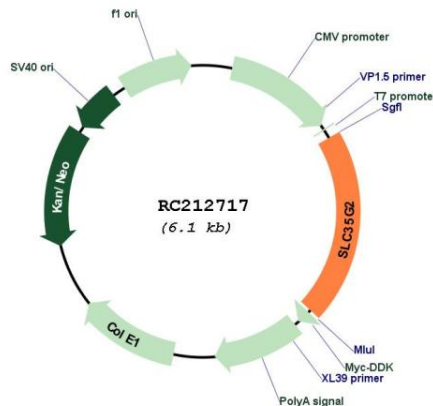
Cytogenetics: 3q22.3

Protein Families: Transmembrane

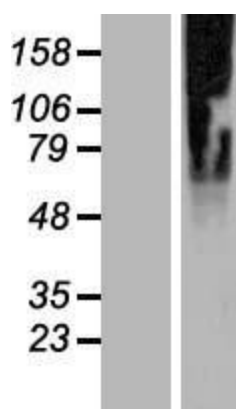
MW: 46.5 kDa

Gene Summary: May play a role in cell proliferation.[UniProtKB/Swiss-Prot Function]

Product images:



Circular map for RC212717



Western blot validation of overexpression lysate (Cat# [LY420394]) using anti-DDK antibody (Cat# [TA50011-100]). Left: Cell lysates from untransfected HEK293T cells; Right: Cell lysates from HEK293T cells transfected with [RC218185] using transfection reagent MegaTran 2.0 (Cat# [TT210002]).