

Product datasheet for RC212712

MAGI1 (NM_001033057) Human Tagged ORF Clone

Product data:

Product Type:	Expression Plasmids
Product Name:	MAGI1 (NM_001033057) Human Tagged ORF Clone
Tag:	Myc-DDK
Symbol:	MAGI1
Synonyms:	AIP-3; AIP3; BAIAP1; BAP-1; BAP1; MAGI-1; MAGI-1b; Magi1d; TNRC19; WWP3
Mammalian Cell Selection:	Neomycin
Vector:	pCMV6-Entry (PS100001)
E. coli Selection:	Kanamycin (25 ug/mL)
ORF Nucleotide Sequence:	>RC212712 representing NM_001033057 Red=Cloning site Blue=ORF Green=Tags(s)

TTTTGTAATACGACTCACTATAGGGCGGCCGGAATTCGTCGACTGGATCCGGTACCGAGGAGATCTGCC
GCC**CGATCGCC**

ATGTCCAAAGTGATCCAGAAGAAGAACCCTGGACTAGCAGGGTTCACGAATGCACCGTGAAGCGGGGAC
CCCAGGGCGAGCTGGGGGTGACGGTGCTGGGAGGCGGGAGCACGGGGAGTTCCGTACGTCGGAGCGGT
GGCGGGTTCGAGGCAGCGGGGTTCCCGGCGGCGGAGGGCCGAGGCTGGGCGAAGGGGAGCTGCTT
CTGGAGGTGCAGGGGTCCGGGTGTCGGCTTGCCTCGCTATGACGTGCTGGGGTTCATCGACAGCTGCA
AGGAGGCCGTACCTTCAAGGCCGTGACACAAGGAGGAAGGCTGAACAAGGACCTGCGACATTTCTCAA
TCAGCGATTCCAGAAGGGTCTCCTGATCATGAGCTCCAGCAGACCATAAGGGATAACCTTTACCGCCAT
GCTGTGCCTTGCACAACCCGATCTCCAGAGAAGGAGAAGTGCCTGGCGTGGACTATAACTTTCTGACTG
TGAAGGAGTTCCTGGACCTCGAGCAGAGTGGGACTCTTCTGGAAGTCGGCACCTATGAAGAACTATTA
TGGGACACCCAAGCCTCCTAGCCAGCCAGTCAGTGGGAAAGTGATCACGACGGATGCCTTGACAGCCTT
CAGTCTGGCTCTAAGCAGTCGACCCGAAGCGAACCAAGTCTACAATGATGCAAAATGCTGGCATAG
TCCACGCGGAGAATGAGGAGGAGGATGACGTTCTGAAATGAACAGCAGCTTTACAGCCGATTCTGGTGA
ACAAGAGGAGCACACTCTCCAAGAAACAGCATTACCACCTGTGAATAGTAGCATCATCGTGTCTCCATC
ACGGACCTTCTCAGAAGTTCCTCAATACCTACCTCTTCTGCGAGAGGATAATTTAGGTCCTCTACCTG
AAAACCTGGGAGATGGCCTATACTGAAAATGGAGAAGTCTATTTTATAGACCATAACACGAAAACAACATC
TTGGTTAGACCTCGGTGCCTAAACAAGCAGCAGAAGCCACTGGAAGAGTGTGAAGATGATGAAGGGGTA
CACACCGAGGAGCTGGACAGTGAAGTAGAAGTGCCTGCTGGTGGGAAAAGATTGAAGACCTGTCTATG
GTATCTACTATGTAGACCACATCAACAGGAAGACACAATATGAGAACCCGGTTCTAGAAGCCAAACGGAA
GAAGCAGCTTGAGCAGCAGCAGCAGCAACAGCAGCAGCAACAGCAGCAGCAGCAGCAGCAGCAGCAGCAG
CAGACAGAAGAATGGACAGAAGTCACTCAGCCCTTGTGCCTCCTGTTATTCCAAACCACCTCCAAGCA
ATCCAGAGCCAGCCAGAGAAGTCCACTCAGGGCAAACCCTTTTTACACGAAACCCTTCTGAGTTGAA
AGCAAGTTCATTCACACAAAGCTGCGGAAAAGCAGTCGTGGCTTGGCTTCACGGTGGTTGGAGGGGAT



[View online >](#)

GAACCTGATGAGTTTCTCCAGATCAAGAGCTTGGTCTAGATGGTCTGCTGCATTGGATGGCAAGATGG
AAACAGGGGATGTGATTGTAAGTGTGAATGACACCTGTGTTTTGGGACACACACATGCTCAAGTTGTGAA
GATCTTCCAGTCCATCCCCATTGGTGCCAGCGTGGACCTTGAACCTCGCCGAGGTTATCCATTGCCTTTT
GATCCAGATGACCCCAATACAAGTTTAGTGACCTCGGTAGCCATTTTGGATAAAGAACCAATTATTGTGA
ATGGGCAAGAGACCTATGATTCACCAGCTAGCCACAGTAGTAAACAGGCAAAGTCAATGGCATGAAGGA
TGCCAGGCCAAGCAGCCAGCGGACGTGGCTTCAAATAGTTCTCATGGTTATCCTAATGACACTGTTTCT
TTGGCTTCTCCATAGCCACTCAGCCAGAACTCATAACTGTTTCATATTGTCAAAGGGCCAATGGGCTTTG
GTTTTACTATCGCAGACAGTCTGGTGGGGTGGCCAAAGAGTGAACAGATTGTTGACAGCCCAAGGTG
CCGAGGCCTGAAAGAAGGGGATCTCATAGTGGAAGTTAATAAGAAGAACGTGCAGGCCCTAACTCACAAC
CAAGTGGTGGATATGCTGGTTGAGTGTCTAAGGGAAGTGAAGTGCACATTGTTGGTGCAACGAGGAGGGC
TGCCAGTTCCCAAGAAGAGCCAAAGTCGCAACCACTGGAAGGAAAGACAGCCAGAATAGTTCTCAGCA
CAGTGTTCAGCCACCGAAGCCTGCACACAGCATCCCCAAGCCACAGCACACAGGTGCTCCCCGAGTTC
CCACCTGCAGAGGCCAAGCTCCAGATCAAACGACAGCTCTGGCCAGAAAAACAGATCCTTTTAAAA
TCTGGGCCAGTCCAGGAGCATGTATGAAAACCGACTTCCAGATTACCAGAACAGGACATCTTCTCTG
GAGAAAAGAGACTGGATTTGGATTTAGGATTCTGGGTGGAATGAACCAGGGGAACCTATTTATATTGGT
CACATCGTACCCTGGGTGCTGCTGATACTGACGGCCGCTGAGGTCTGGAGATGAATTAATCTGTGTGG
ATGGGACGCCAGTAATTGAAAAATCACACCAGCTTGTGGTCCAGCTTATGCAACAAGCTGCCAAGCAAGG
CCACGTCAATCTCACGGTGCAGGCTAAAGTGGTTTTTGGGTGCCAAAACCGAGAACGAGGTGCCCTCG
CCAGCCTCCTCTCATCACAGTAGCAACCAGCCGCTCGCTGACAGAAGAGAAGCGCACTCCGCAGGGCA
GCCAGAACTCGTGAACACGGTGAAGTGGGTCAGCCAGCCAGCAGCAGCCAGCGCATCGGCAGTGGCGGGCGG
GGCAGCGGGTGGTCAACCGTGGTGCAGCCCTACGACGTGGAGATCCGGCGCGGGGAGAACGAGGGC
TTCGGCTTCGTCATCGTCTCCTGGTGAAGCCCGAAGCAGGCAGCAGCTTTGGCAATGCATGTGTGG
CTATGCCTCACAATAAGTTCGGATTATTGAGGGGAGCCCTGCTGACCCGTGTGGCAAGTGAAGTGG
AGACCGGATCTTGGCAGTAAATGGATGTTCCATCACCAACAATCCATTTCAGACATTGTGAACCTAATC
AAGGAAGCGGAAACACAGTTACCCTCCGCATCATTCTGGGGATGAGTCTCGAATGCCACCTTGTCTGA
CCAATGCAGAGAAGATTGCCACCATCACACCACACACCCCTTCTCAGCAAGGGACCCAGGAGACAAG
GAATACCACAAACCAAGCAGGAATCTCAATTTGAGTTCAAAGCACCCCAAGCAACACAGGAGCAAGAT
TTTTACTGTGGAAGTGGAAAGAGGAGCAAGGGATTTGGCTTTAGCCTTCGAGGAGGCCGAGAGTATA
ACATGGACCTCTATGTTCTGCGCTTAGCAGAGGACGGTCTCGGAGAGGTGTGGAAAGATGAGGATTGG
TGATGAAATTTAGAGATCAATGGTGAAGCACCACAAAAACATGAAGCATTCTCGAGCTATAGAAGTATT
AAGAATGGTGGCCGAGAGTTCTGTCTGTTCTGAAGCGGGGAGACGGCTCAGTACCAGAATATGACCCCA
GCAGCGACCGCCACGGCCCGCCACCGGTCCACAAGGTGTTCCGGAAGTGAAGGCGGGCCGACCGCCG
GCAGCATCCGTCATTGGAGTCCAGTTACCACCCGATCTTCAACAATCATCACCATGAGGAAAAGCGG
GCACACGCAAGGGATCCGAAAGGCAGCAGAGATATAGCAGACAACCAATGAACACCACACCTGGAATG
GGACTTCGAGGAAACCCGACAGCGGGCATGCCGACCAAGGACCGGGCGCCGAGGGACGGAGGGACGC
GCAGGCCGAGCGCGGCAGCCCAACGGCCCAAGAGGCGGTCCCAGAGAAGCGGAGGGAGGGACCC
CGCAGCGCCGACAACACTTTGGAGAGGAGGAGAAGCACGAGAAGAGACGAGACGTCTCTCCGAGCGGA
GGCAGAGCGGTCAACCCCGCAGGAGAGACGGCTCCCCAGCCGCGGAGACGGTCTCTGGAGAGACT
CCTGGAGCAGAGGAGTCCCCGAGCGCAGGAGAGGGGGCTCGCCGAGCGCAGGGCCAAGTCCACCGAC
CGGAGGCGCGCACGCTCCCCGAGCGCAGGAGAGCGGTCCCTGGACAAAAGGAACAGAGAGGACAGAG
CCAGCCACCGAGAAGGGAAAGGCGAATCTGAAACAGGATGCCGGCAGAAGTTCAGACATCCCCCGGA
GCAGAGAAGCGACCTTACAAGAATGTAGCACCGACCTCAGTATC

ACGCGTACGCGGGCGCTCGAGCAGAACTCATCTCAGAAGAGGATCTGGCAGCAATGATATCCTGGATT
ACAAGGATGACGACGATAAGGTTTAA

Protein Sequence: >RC212712 representing NM_001033057
Red=Cloning site Green=Tags(s)

```

MSKVIQKKNHWTSRVHECTVKRGPQGELGVTVLGGAEHGEFFPYVGAVAAVEAAGLPGGGEGPRLGEGELL
LEVOGVRVSGLPRYDVLVIDSCKEAVTFKAVRQGGRLNKDLRHFLNQRFKQKSPDHQLQQTIRDNL YRH
AVPCTTRSPREGEVPGVDYNFLTVKEFLDLEQSGTLLLEVGTYEGNYGTPKPPSQPVSGKVITTDALHSL
QSGSKQSTPKRRTKSYNDMOMNAGIVHAENEEDDVPEMNSSFTADSGEQEEHTLQETALPPVNSSIIAAPI
TDPSQKFPQYLPLSAEDNLGPLPENWEMAYTENGEVYFIDHNTKTTSWLDPRCLNKQKPLEECEDDEGV
HTEELDSELELPAGWEKIEDPVYGIYYVDHINRKTQYENPVLEAKRKKQLEQQQQQQQQQQQQQQQQQQQ
QTEEWTDHSALVPPVIPNHPPSNPEPAREVPLQGKPFTRNPSELKGF IHTKLRKSSRGFGFTVVGGD
EPDEFLLQIKSLVLDGPAALDGKMETGDVIVSVNDTCVLGHTHAQVVKIFQSIPIGASVDLELCRGYPLPF
DPDDPNTSLVTSVAILDKEPIIVNGQETYDSPASHSSKTGKVNMGKDARPPSPADVASNSSHGYPNDTVS
LASSIATQPELITVHIVKGMGFGTIADSPGGGQVRVKQIVDSPRCRGLKEGDLIVEVNKKNVQALTHN
QVVDMLVECPKGEVTLVQRGGLPVPKSPKSPQLERKDSQNSSQHSVSSHRSLHTASPHSTQVLPF
PPAEAQAPDQTDSSGQKPPDFKIWAQSRSMYENRLPDYQEQDIFLWRKETGFGFRILGGNEPGEPIYIG
HIVPLGAADTDGRLRSGDELICVDGTPVIGKSHQLVVQLMQAAKQGHVNLTVRRKVVFAVPKTENEVPS
PASSHSSNQPASLTEEKRT PQGSQNSLNTVSSGSGSTSGIGSGGGGGSGVVSTVVQPYDVEIRRGENG
FGFVIVSSVS RPEAGTTFGNACVAMPHKIGRIIEGSPADRCGKLVGDRILAVNGCSITNKSHSDIVNLI
KEAGNTVTLRIIPGDESSNATLLTNAEKIATITTTHTPSQQGTQETRNTTKPKQESQFEFKAPQATQEQD
FYTVELERGA KGFGLRGGREYNMDLYVLR LAEDGPAERCGKMRIGDEILEINGETTKNMKHSRAIELI
KNGGRRVRLFLKRGDGSVPEYDPSDRHG PATGPQGVPEVRAGPDRRQHP SLESSYPPDLHKSSPHGEKR
AHARDPKGSREYSRQPN EHHWTNGTSRKPD SGACRPKDRAPEGRRDAQAERAAAANGPKRRSPERKREGT
RSADNTLERREKHEKRRDVS PERRRERSPTRRRDGSPSRRRRSLERLLEQRRSPERRRGGSPERRAKSTD
RRRARSPERRRERSL DKRNREDRASHREEREEANLKQDAGRSSRHPPEQRRRPYKECSTDLSTI
    
```

TRTRPLEQKLISEEDLAANDILDYKDDDDKV

Chromatograms: https://cdn.origene.com/chromatograms/mk8022_h12.zip

Restriction Sites: SgfI-MluI

Cloning Scheme:

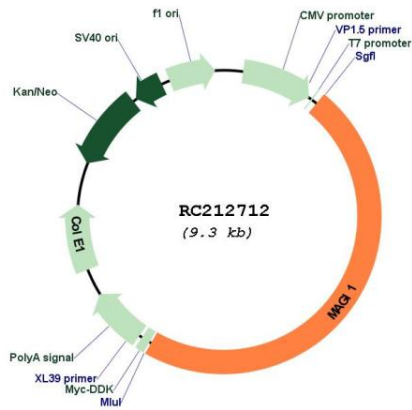


ACCN: NM_001033057

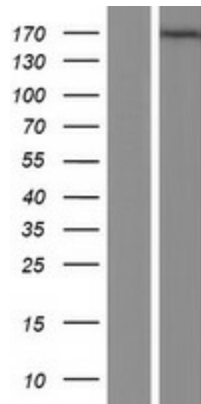
ORF Size: 4386 bp

OTI Disclaimer:	The molecular sequence of this clone aligns with the gene accession number as a point of reference only. However, individual transcript sequences of the same gene can differ through naturally occurring variations (e.g. polymorphisms), each with its own valid existence. This clone is substantially in agreement with the reference, but a complete review of all prevailing variants is recommended prior to use. More info
OTI Annotation:	This clone was engineered to express the complete ORF with an expression tag. Expression varies depending on the nature of the gene.
Components:	The ORF clone is ion-exchange column purified and shipped in a 2D barcoded Matrix tube containing 10ug of transfection-ready, dried plasmid DNA (reconstitute with 100 ul of water).
Reconstitution Method:	<ol style="list-style-type: none">1. Centrifuge at 5,000xg for 5min.2. Carefully open the tube and add 100ul of sterile water to dissolve the DNA.3. Close the tube and incubate for 10 minutes at room temperature.4. Briefly vortex the tube and then do a quick spin (less than 5000xg) to concentrate the liquid at the bottom.5. Store the suspended plasmid at -20°C. The DNA is stable for at least one year from date of shipping when stored at -20°C.
RefSeq:	NM_001033057.2
RefSeq Size:	7062 bp
RefSeq ORF:	4389 bp
Locus ID:	9223
UniProt ID:	Q96QZ7
Cytogenetics:	3p14.1
Protein Pathways:	Tight junction
MW:	161.4 kDa
Gene Summary:	The protein encoded by this gene is a member of the membrane-associated guanylate kinase homologue (MAGUK) family. MAGUK proteins participate in the assembly of multiprotein complexes on the inner surface of the plasma membrane at regions of cell-cell contact. The product of this gene may play a role as scaffolding protein at cell-cell junctions. Alternatively spliced transcript variants encoding different isoforms have been identified. [provided by RefSeq, Jul 2008]

Product images:



Circular map for RC212712



Western blot validation of overexpression lysate (Cat# [LY422358]) using anti-DDK antibody (Cat# [TA50011-100]). Left: Cell lysates from untransfected HEK293T cells; Right: Cell lysates from HEK293T cells transfected with RC212712 using transfection reagent MegaTran 2.0 (Cat# [TT210002]).