

## Product datasheet for **RC212696**

### **FAM53B (NM\_014661) Human Tagged ORF Clone**

#### **Product data:**

Product Type:	Expression Plasmids
Product Name:	FAM53B (NM_014661) Human Tagged ORF Clone
Tag:	Myc-DDK
Symbol:	FAM53B
Synonyms:	bA12J10.2; KIAA0140; smp
Mammalian Cell Selection:	Neomycin
Vector:	pCMV6-Entry (PS100001)
E. coli Selection:	Kanamycin (25 ug/mL)



[View online »](#)

ORF Nucleotide  
Sequence:

>RC212696 representing NM\_014661  
Red=Cloning site Blue=ORF Green=Tags(s)

TTTTGTAATACGACTCACTATAGGGCGGCCGGAATTCGTCGACTGGATCCGGTACCGAGGAGATCTGCC  
GCCCGGATCGCC

ATGGTGATGGTCCTAAGTGAAAGCCTCAGCACCCGGGAGCTGACTCCATTGCATGTGGACCTTCAGCC  
GTGAAGTGCACACGCCAAAGAAGATGAGTCAAGGACCTACACTTTTCTTGTGGAATTATGAAAATGA  
CAGATGGCGAGACCTGGACAGGAAATGCCCTCTTCAGATTGACCAACCGAGCACCAGCATCTGGGAATGC  
CTGCCTGAAAAGGACAGCTCACTATGGCACCGGGAGGAGTACCAGCCTGCGCTGTGACCAGTCTGATCA  
AAGACCTCAGCATCAGCGACCACAACGGGAACCCCTCAGCACCCCTAGCAAGCGCCAGTCCCGCTCACT  
GTCCTTCTCCGATGAGATGTCCAGTTGCCGGACATCATGGAGGCCCTGGGCTCCAAAGTCTGGACTCCC  
GTGGAAAAGAGACGCTGTACAGCGGGGACGCTCCAGCGCTATTCCAACGGCTTCAGCACCATGCAGA  
GGAGTTCCAGCTTCAGCCTCCCTCCCGGGCCAACGTGCTCTCCTCACCTGCGACCAGGACAGGACTCCA  
CCACCGATTTGGAGGGCAGCCCTGCCAAGGGGTGCCAGGCTCAGCCCCGTGTGGACAGGCAGGTGACACC  
TGGAGCCCTGACCTGCACCCCTGGGAGGAGGCCGGCTGGACCTGCAGCGGTCCCTCTTGTCTCATG  
AGCAGTTTTCTTTGTGGAATACTGTCTCCCTCAGCCAAACAGCACACCTGCCTCAACACAGAGCTGGC  
GAGACGCTCCAGCGCCCTTCCCGCAGCCGCTCCAGCCGTGTGTCTTAACGACAAGAAGTCCGGTGT  
AAAAGGCGCGCCCTGAAGAAGTGAAGAGCAGAGGCCTTCTCTAGACCTTGCCAAGATGGCACAGA  
AAGTGTGACACCTTCCAGCAGCTCAGTGCCTGAGCGCAGGGACAGAGGACTGCGGTCCCAGAGCCCTTCG  
CCGCCACGTGACGAAACACAGGGCCTGGACCGCCCTGCTCTCAGCCTCCGGCCAGGGGGCAGGACCC  
GCTGGGACCCCGTCCCTGAGCCTTCCCTTCCCTTCCTTCGACGACCACCTCGCTGCCAGGAGACTGT  
CCTGTGAGGAGTCAGACAGCTGCGCCCTGGACGAGGATTGTGGCAGGAGAGCGGAGCCGGCTGCAGCCTG  
CGGGACCGCGGGCCCTGGGAACAGCCTCTGCTCCCTGGACGGCGAGTTGGACATTGAGCAGATAGAG  
AAGAAC

ACGCGTACGCGGCCGCTCGAGCAGAACTCATCTCAGAAGAGGATCTGGCAGCAAATGATATCCTGGATT  
ACAAGGATGACGACGATAAGGTTTAA

## Protein Sequence:

>RC212696 representing NM\_014661  
Red=Cloning site Green=Tags(s)

MVMVLSLSTRGADSIACGTF SRELHTPKKMSQGPTLFCGIMENDRWRDLDRKPLQIDQPSTSIWEC  
LPEKSSSLWHREAVTACAVTSLIKDLISDHNGNPSAPPSKRQCRSLSFSDMSSCRTSWRPLGSKVWTP  
VEKRRCYSGGSVQRYNSGFSTMQRSSFSLSRANVLSPPCDQAGLHHRFGGQPCQGVPGSAPCGQAGDT  
WSPDLHPVGGGRLDLQRSLSCSHEQFSFVEYCPPSANSTPASTPELARRSSGLSRSRSQPCVLDKKG  
KRRRPEEVQEQRPSLDLAKMAQNCQTFSSLSCL SAGTEDCGPQSPFARHVSNTRAWTALLSASGPGGRT  
AGTPVPEPLPPSFDDHLACQEDLSCEESDSCALDEDCGRRRAEPAAWRDRGAPGNSLCSLDGELDIEQIE  
KN

TRTRPLEQKLISEEDLAANDILDYKDDDDKV

## Chromatograms:

[https://cdn.origene.com/chromatograms/mk8023\\_a04.zip](https://cdn.origene.com/chromatograms/mk8023_a04.zip)

## Restriction Sites:

SgfI-MluI

**Cloning Scheme:**


**ACCN:** NM\_014661

**ORF Size:** 1266 bp

**OTI Disclaimer:** The molecular sequence of this clone aligns with the gene accession number as a point of reference only. However, individual transcript sequences of the same gene can differ through naturally occurring variations (e.g. polymorphisms), each with its own valid existence. This clone is substantially in agreement with the reference, but a complete review of all prevailing variants is recommended prior to use. [More info](#)

**OTI Annotation:** This clone was engineered to express the complete ORF with an expression tag. Expression varies depending on the nature of the gene.

**Components:** The ORF clone is ion-exchange column purified and shipped in a 2D barcoded Matrix tube containing 10ug of transfection-ready, dried plasmid DNA (reconstitute with 100 ul of water).

**Reconstitution Method:**

1. Centrifuge at 5,000xg for 5min.
2. Carefully open the tube and add 100ul of sterile water to dissolve the DNA.
3. Close the tube and incubate for 10 minutes at room temperature.
4. Briefly vortex the tube and then do a quick spin (less than 5000xg) to concentrate the liquid at the bottom.
5. Store the suspended plasmid at -20°C. The DNA is stable for at least one year from date of shipping when stored at -20°C.

**RefSeq:** [NM\\_014661.4](#)

**RefSeq Size:** 5740 bp

**RefSeq ORF:** 1269 bp

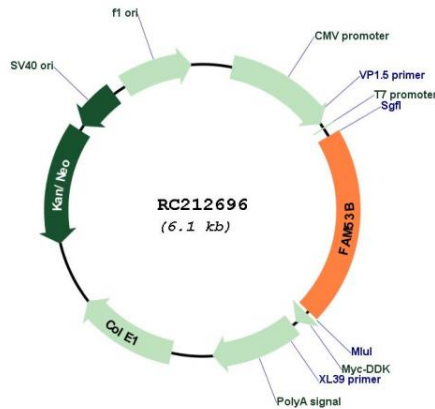
**Locus ID:** 9679

**UniProt ID:** [Q14153](#)

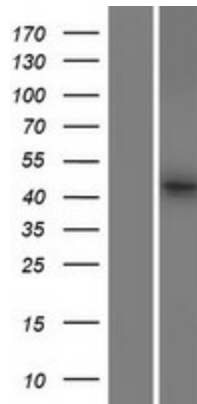
**Cytogenetics:** 10q26.13

**Protein Families:** Druggable Genome  
**MW:** 45.6 kDa  
**Gene Summary:** Acts as a regulator of Wnt signaling pathway by regulating beta-catenin (CTNNB1) nuclear localization.[UniProtKB/Swiss-Prot Function]

**Product images:**



Circular map for RC212696



Western blot validation of overexpression lysate (Cat# [LY415119]) using anti-DDK antibody (Cat# [TA50011-100]). Left: Cell lysates from untransfected HEK293T cells; Right: Cell lysates from HEK293T cells transfected with RC212696 using transfection reagent MegaTran 2.0 (Cat# [TT210002]).