

Product datasheet for RC212690

PIM3 (NM_001001852) Human Tagged ORF Clone

Product data:

Product Type:	Expression Plasmids
Product Name:	PIM3 (NM_001001852) Human Tagged ORF Clone
Tag:	Myc-DDK
Symbol:	PIM3
Synonyms:	pim-3
Mammalian Cell Selection:	Neomycin
Vector:	pCMV6-Entry (PS100001)
E. coli Selection:	Kanamycin (25 ug/mL)
ORF Nucleotide Sequence:	>RC212690 representing NM_001001852 Red=Cloning site Blue=ORF Green=Tags(s)

TTTTGTAATACGACTCACTATAGGGCGGCCGGAATTCGTCGACTGGATCCGGTACCGAGGAGATCTGCC
GCC**CGATCGCC**

ATGCTGCTCTCCAAGTTCGGCTCCCTGGCGCACCTCTGCGGGCCCGCGGCGTGGACCACCTCCCGGTGA
AGATCCTGCAGCCAGCCAAGGCGGACAAGGAGAGCTTCGAGAAGGCGTACCAGGTGGCGCCGTGCTGGG
TAGCGCGGGCTTCGGCACGGTCTACGCGGGTAGCCGCATCGCCGACGGGCTCCCGTGGCTGTGAAGCAC
GTGGTGAAGGAGCGGGTACCGAGTGGGCGAGCCTGGGCGCGCGACCGTGCCCTGGAGGTGGTGTCTGC
TGCGAAGGTGGGCGCGCGGGCGCGCGCGCGTATCCGCCTGCTGGACTGGTTCGAGCGGCCGA
CGGCTTCCTGCTGGTGTGGAGCGGCCGAGCCGCGCAGGACCTCTCGACTTTATCACGAGCGCGGC
GCCCTGGACGAGCCGCTGGCGCGCGCTTCTTCGCGCAGGTGCTGGCCGCGTGCACCAGTGCACAGCT
GCGGGTTCGTGCACCGCGACATTAAGGACGAAAATCTGCTTGTGGACTGCGCTCCGGAGAGCTCAAGCT
CATCGACTTCGGTTCGGGTGCGCTCAAGGACACGGTCTACACCGACTTCGACGGCACCCGAGTGTAC
AGCCCCCGGAGTGGATCCGCTACCACCGCTACCACGGGCGCTCGGCCACCGTGTGGTGTGGCGTGC
TTCTCTACGATATGGTGTGTGGGACATCCCCTTCGAGCAGGACGAGGAGATCCTCCGAGGCCCTGCT
CTTCCGGAGGAGGTCTCTCCAGAGTCCAGCAGCTGATCCGGTGGTGCCTGTCCCTGCGGCCCTCAGAG
CGGCCGTCGCTGGATCAGATTGCGGCCATCCCTGGATGCTGGGGCTGACGGGGCGCCCGGAGAGCT
GTGACCTGCGGCTGTGCACCCTGACCCCTGATGACGTGGCCAGCACCCAGTCCAGCAGCGAGAGCTTG

ACGCGTACGCGGCCGCTCGAGCAGAAACTCATCTCAGAAGAGGATCTGGCAGCAAATGATATCCTGGATT
ACAAGGATGACGACGATAAGGTTTAA



[View online »](#)

Protein Sequence: >RC212690 representing NM_001001852
Red=Cloning site Green=Tags(s)

MLLSKFGSLAHLCPGGVDHLPVKILQPAKADKESFEKAYQVGAVLGSGGFGTVYAGSRIADGLPVAVKH
 VVKERVTEWGSLLGGATVPLEVLLRKVGAAGGARGVIRLLDWFERPDPGLLVLERPEPAQDLDFDITERG
 ALDEPLARRFFAQVLA AVRHCSCGVVHRDIKDENLLVDLRSGELKLIDFGSGALLKDTVYDFDGTTRVY
 SPPEWIRYHRYHGRSATVWSLGVLLYDMVCGDIPFEQDEEILRGRLLFRRRVSPECQQLIRWCLSLRPSE
 RPSLDQIAAHPWMLGADGGAPESCDLRLCTLPDDVASTTSSSESL

TRTRPLEQKLISEEDLAANDILDYKDDDDKV

Chromatograms: https://cdn.origene.com/chromatograms/mg2930_f01.zip

Restriction Sites: SgfI-MluI

Cloning Scheme:

Cloning sites used for ORF Shuttling:



* The last codon before the Stop codon of the ORF

ACCN: NM_001001852

ORF Size: 978 bp

OTI Disclaimer: The molecular sequence of this clone aligns with the gene accession number as a point of reference only. However, individual transcript sequences of the same gene can differ through naturally occurring variations (e.g. polymorphisms), each with its own valid existence. This clone is substantially in agreement with the reference, but a complete review of all prevailing variants is recommended prior to use. [More info](#)

OTI Annotation: This clone was engineered to express the complete ORF with an expression tag. Expression varies depending on the nature of the gene.

Components: The ORF clone is ion-exchange column purified and shipped in a 2D barcoded Matrix tube containing 10ug of transfection-ready, dried plasmid DNA (reconstitute with 100 ul of water).

Reconstitution Method:

1. Centrifuge at 5,000xg for 5min.
2. Carefully open the tube and add 100ul of sterile water to dissolve the DNA.
3. Close the tube and incubate for 10 minutes at room temperature.
4. Briefly vortex the tube and then do a quick spin (less than 5000xg) to concentrate the liquid at the bottom.
5. Store the suspended plasmid at -20°C. The DNA is stable for at least one year from date of shipping when stored at -20°C.

RefSeq: [NM_001001852.2](#), [NP_001001852.1](#)

RefSeq Size: 2392 bp

RefSeq ORF: 981 bp

Locus ID: 415116

UniProt ID: [Q86V86](#)

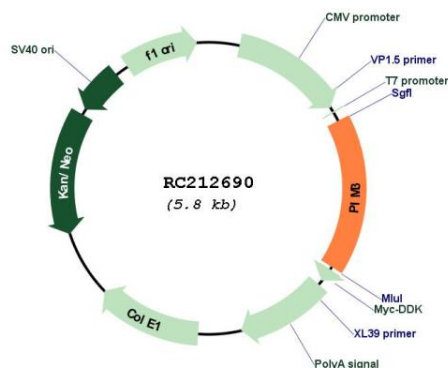
Cytogenetics: 22q13.33

Protein Families: Druggable Genome, Protein Kinase

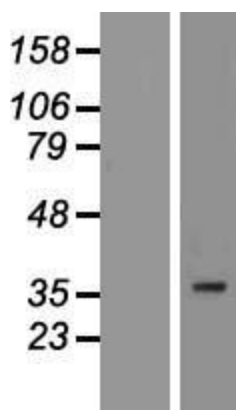
MW: 35.7 kDa

Gene Summary: The protein encoded by this gene belongs to the Ser/Thr protein kinase family, and PIM subfamily. This gene is overexpressed in hematological and epithelial tumors and is associated with MYC coexpression. It plays a role in the regulation of signal transduction cascades, contributing to both cell proliferation and survival, and provides a selective advantage in tumorigenesis. [provided by RefSeq, Jun 2012]

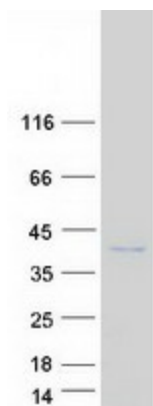
Product images:



Circular map for RC212690



Western blot validation of overexpression lysate (Cat# [LY424253]) using anti-DDK antibody (Cat# [TA50011-100]). Left: Cell lysates from untransfected HEK293T cells; Right: Cell lysates from HEK293T cells transfected with RC212690 using transfection reagent MegaTran 2.0 (Cat# [TT210002]).



Coomassie blue staining of purified PIM3 protein (Cat# [TP312690]). The protein was produced from HEK293T cells transfected with PIM3 cDNA clone (Cat# RC212690) using MegaTran 2.0 (Cat# [TT210002]).