

## Product datasheet for RC212689

### DARPP32 (PPP1R1B) (NM\_032192) Human Tagged ORF Clone

#### Product data:

**Product Type:** Expression Plasmids  
**Product Name:** DARPP32 (PPP1R1B) (NM\_032192) Human Tagged ORF Clone  
**Tag:** Myc-DDK  
**Symbol:** DARPP32  
**Synonyms:** DARPP-32; DARPP32  
**Mammalian Cell Selection:** Neomycin  
**Vector:** pCMV6-Entry (PS100001)  
**E. coli Selection:** Kanamycin (25 ug/mL)  
**ORF Nucleotide Sequence:** >RC212689 representing NM\_032192  
 Red=Cloning site Blue=ORF Green=Tags(s)

TTTTGTAATACGACTCACTATAGGGCGGCCGGAATTCGTCGACTGGATCCGGTACCGAGGAGATCTGCC  
 GCC**CGATCGCC**

ATGGACCCCAAGGACCGCAAGAAGATCCAGTTCTCGGTGCCCGCGCCCTAGCCAGCTCGACCCCGCC  
 AGGTGGAGATGATCCGGCGCAGGAGACCAACGCCTGCCATGCTGTTCCGGCTCTCAGAGCACTCCTCACC  
 AGAGGAGGAAGCCTCCCCCACCAGAGAGCCTCAGGAGAGGGGCACCATCTCAAGTCGAAGACCCCAAC  
 CCCTGTGCTACACACCCTTCGCTGAAAGCTGTGCAGCGCATTGCTGAGTCTCACCTGCAGTCTATCA  
 GCAATTTGAATGAGAACCAGGCCTCAGAGGAGGAGGATGAGCTGGGGAGCTTCGGGAGCTGGGTTATCC  
 AAGAGAGGAAGATGAGGAGGAAGAGGAGGATGATGAAGAAGAGGAAGAAGAAGAGGACAGCCAGGCTGAA  
 GTCCTGAAGGTCATCAGGCAGTCTGCTGGGCAAAAGACAACCTGTGGCCAGGGTCTGGAAGGGCCCTGGG  
 AGCGCCCAACCCCTCTGGATGAGTCCGAGAGAGATGGAGGCTCTGAGGACCAAGTGAAGACCCAGCACT  
 AAGTGAGCCTGGGGAGGAACCTCAGCGCCTTCCCCTCTGAGCCTGGCACA

**ACGCGT**ACGCGGCCGCTCGAGCAGAACTCATCTCAGAAGAGGATCTGGCAGCAATGATATCCTGGATT  
 ACAAGGATGACGACGATAAGGTTTAA

**Protein Sequence:** >RC212689 representing NM\_032192  
 Red=Cloning site Green=Tags(s)

MDPKDRKKIQFSVPAPPSQLDPRQVEMIRRRRPTPAMLFRLSEHSSPEEEASPHQRASGEGHHLKSKRPN  
 PCAYTPPSLKAVQRIAESHLQSI SNLNENQASEEDELGELRELGYPREDEEEEEDEEEEEEDSQA  
 VLKVIQSAQKTTCCQGLEGPWERPPPLDESERDGGSEDQVEDPALSEPGEEPQRPSPEPGT

**TRTRPLEQKLISEEDLAANDILDYKDDDDKV**

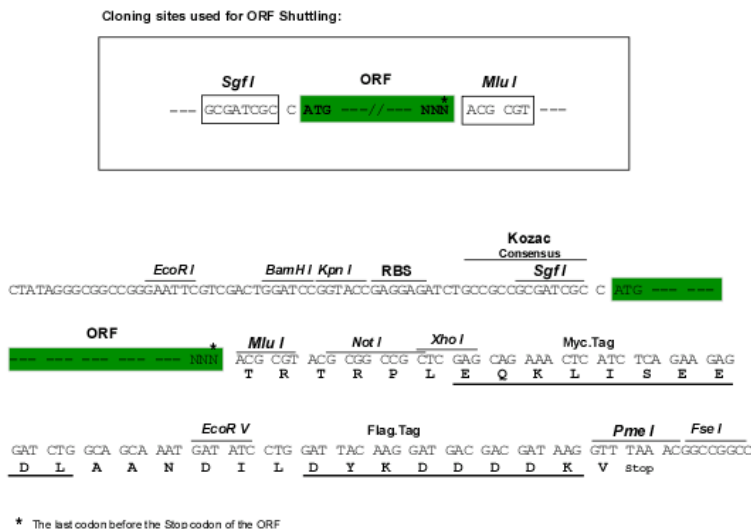


[View online »](#)

**Chromatograms:** [https://cdn.origene.com/chromatograms/mg2560\\_c07.zip](https://cdn.origene.com/chromatograms/mg2560_c07.zip)

**Restriction Sites:** SgfI-MluI

**Cloning Scheme:**



**ACCN:** NM\_032192

**ORF Size:** 612 bp

**OTI Disclaimer:** The molecular sequence of this clone aligns with the gene accession number as a point of reference only. However, individual transcript sequences of the same gene can differ through naturally occurring variations (e.g. polymorphisms), each with its own valid existence. This clone is substantially in agreement with the reference, but a complete review of all prevailing variants is recommended prior to use. [More info](#)

**OTI Annotation:** This clone was engineered to express the complete ORF with an expression tag. Expression varies depending on the nature of the gene.

**Components:** The ORF clone is ion-exchange column purified and shipped in a 2D barcoded Matrix tube containing 10ug of transfection-ready, dried plasmid DNA (reconstitute with 100 ul of water).

**Reconstitution Method:**

1. Centrifuge at 5,000xg for 5min.
2. Carefully open the tube and add 100ul of sterile water to dissolve the DNA.
3. Close the tube and incubate for 10 minutes at room temperature.
4. Briefly vortex the tube and then do a quick spin (less than 5000xg) to concentrate the liquid at the bottom.
5. Store the suspended plasmid at -20°C. The DNA is stable for at least one year from date of shipping when stored at -20°C.

**RefSeq:** [NM\\_032192.4](#)

**RefSeq Size:** 1841 bp

**RefSeq ORF:** 615 bp

**Locus ID:** 84152

UniProt ID: [Q9UD71](#)

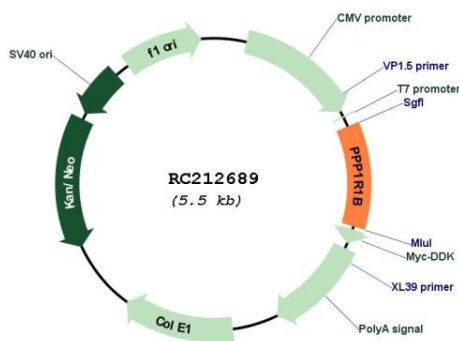
Cytogenetics: 17q12

Protein Families: Druggable Genome

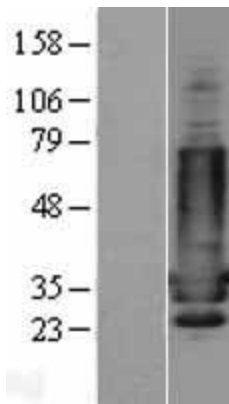
MW: 22.8 kDa

**Gene Summary:** This gene encodes a bifunctional signal transduction molecule. Dopaminergic and glutamatergic receptor stimulation regulates its phosphorylation and function as a kinase or phosphatase inhibitor. As a target for dopamine, this gene may serve as a therapeutic target for neurologic and psychiatric disorders. Multiple transcript variants encoding different isoforms have been found for this gene. [provided by RefSeq, Oct 2011]

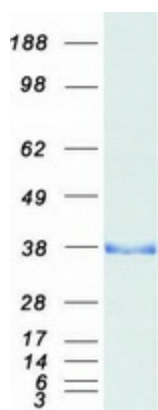
**Product images:**



Circular map for RC212689



Western blot validation of overexpression lysate (Cat# [LY403149]) using anti-DDK antibody (Cat# [TA50011-100]). Left: Cell lysates from untransfected HEK293T cells; Right: Cell lysates from HEK293T cells transfected with RC212689 using transfection reagent MegaTran 2.0 (Cat# [TT210002]).



Coomassie blue staining of purified PPP1R1B protein (Cat# [TP312689]). The protein was produced from HEK293T cells transfected with PPP1R1B cDNA clone (Cat# RC212689) using MegaTran 2.0 (Cat# [TT210002]).