

Product datasheet for **RC212680**

FAM92A1 (FAM92A) (NM_145269) Human Tagged ORF Clone

Product data:

Product Type:	Expression Plasmids
Product Name:	FAM92A1 (FAM92A) (NM_145269) Human Tagged ORF Clone
Tag:	Myc-DDK
Symbol:	FAM92A1
Synonyms:	FAM92A; FAM92A1; PAPA9
Mammalian Cell Selection:	Neomycin
Vector:	pCMV6-Entry (PS100001)
E. coli Selection:	Kanamycin (25 ug/mL)
ORF Nucleotide Sequence:	>RC212680 representing NM_145269 Red=Cloning site Blue=ORF Green=Tags(s)

TTTTGTAATACGACTCACTATAGGGCGGCCGGAATTCGTCGACTGGATCCGGTACCGAGGAGATCTGCC
 GCC**CGATCGC**C

ATGATGAGGCGCACCTGGAAAACCGAACGCTCAAACGAAACAACGCAAACAGCTGTCTCAAATGTGG
 AGAAGCATTTTGGAGAACTGTGCCAAATCTTCGCTGCCTATGTGCGGAAAACGCCAGGCTGAGAGACAA
 AGCAGACCTCCTGGTGAATGAAATTAACGCGTATGCTGCTACAGAGACCCCGCATTTAAAGCTGGGCCTG
 ATGAACTTTCAGATGAGTTTGCCAAACTTCAGGATTATCGACAAGCAGAGGTTGAAAGACTTGAAGCCA
 AAGTAGTTGAACCTTGAAAACCTTATGGGACCATTGTGAAAATGAAACGGGATGACCTCAAAGCAACACT
 CACAGCAAGGAATCGAGAAGCTAAGCAATTAACCTAGTTAGAAAGAACACGTCAGCGAAACCCATCTGAT
 CGACATGTTATTTACAGGCAGAAACGGAATTACAGAGAGCTGCAATGGATGCTAGCCGAACAAGTCGTC
 ATCTGGAGGAACTATTAACAACCTTTGAAAGGCAGAAAATGAAGGATATAAAGACTATATTTCTGAATT
 TATCACAATCGAAATGTTATTTACGGCAAAGCTTTAGAGGTCTACACTGCTGCCTACCAGAATATACAA
 AACATTGATGAAGATGAAGATTTAGAGGTTTTCCGAAATCTCTGTATGCACCAGATTATTCATCTCGTT
 TAGATATTGTAAGAGCAAATTCAAAGTCACCTCTTCAGAGATCACTGTGAGCTAAGTGTGTATCTGGAAC
 AGGACAGGTATCCACTTGTGCTAGTAAGAAAGGATCAACAAGCAGAAGATGATGAGGATGACGAGTTAGAT
 GTTACAGAAGAAGAAAATTTCTTAAG

AG**CGGACCG**ACGCGTACGCGGCCGCTCGAGCAGAAACTCATCTCAGAAGAGGATCTGGCAGCAAATGATATCC
 TGGATTACAAGGATGACGACGATAAGGTTTAA


[View online »](#)

Protein Sequence: >RC212680 representing NM_145269
 Red=Cloning site Green=Tags(s)

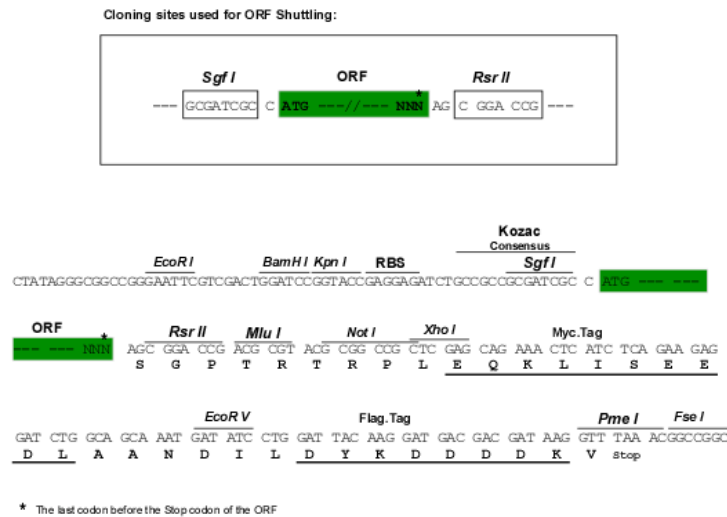
MMRRTLENRNAQTKQLQTAVSNVEKHFGELCQIFAAAYVRKTARLRDKADLLVNEINAYAATETPHLKLGL
 MNFADEF AKLQDYRQAEVERLEAKVVEPLKTYGTIVKMKRDDLKATLTARNREAKQLTQLERTRQRNPST
 RHVISQAE TELQRAAMDASRTSRHLEETINNFERQKMKDIKTIFSEFITIEMLFHGKALEVYTAAYQNIQ
 NIDEDLEVFRNSLYAPDYSSRLDIVRANSKSP LQRSLSAKCVSGTGQVSTCRLRKDQQAEDDEDELD
 VTEENFLK

SGP TRTRRL EQKL I SEEDLA AND I LDYK DDDDKV

Chromatograms: https://cdn.origene.com/chromatograms/mk8023_c08.zip

Restriction Sites: SgfI-RsrII

Cloning Scheme:



ACCN: NM_145269

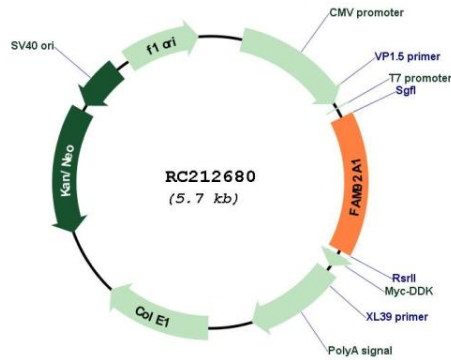
ORF Size: 867 bp

OTI Disclaimer: Due to the inherent nature of this plasmid, standard methods to replicate additional amounts of DNA in E. coli are highly likely to result in mutations and/or rearrangements. Therefore, OriGene does not guarantee the capability to replicate this plasmid DNA. Additional amounts of DNA can be purchased from OriGene with batch-specific, full-sequence verification at a reduced cost. Please contact our customer care team at custsupport@origene.com or by calling 301.340.3188 option 3 for pricing and delivery.

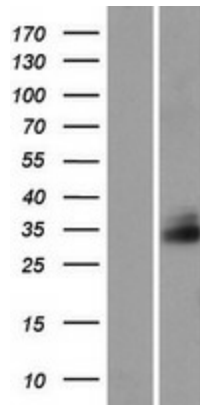
The molecular sequence of this clone aligns with the gene accession number as a point of reference only. However, individual transcript sequences of the same gene can differ through naturally occurring variations (e.g. polymorphisms), each with its own valid existence. This clone is substantially in agreement with the reference, but a complete review of all prevailing variants is recommended prior to use. [More info](#)

OTI Annotation:	This clone was engineered to express the complete ORF with an expression tag. Expression varies depending on the nature of the gene.
Components:	The ORF clone is ion-exchange column purified and shipped in a 2D barcoded Matrix tube containing 10ug of transfection-ready, dried plasmid DNA (reconstitute with 100 ul of water).
Reconstitution Method:	<ol style="list-style-type: none"> 1. Centrifuge at 5,000xg for 5min. 2. Carefully open the tube and add 100ul of sterile water to dissolve the DNA. 3. Close the tube and incubate for 10 minutes at room temperature. 4. Briefly vortex the tube and then do a quick spin (less than 5000xg) to concentrate the liquid at the bottom. 5. Store the suspended plasmid at -20°C. The DNA is stable for at least one year from date of shipping when stored at -20°C.
Note:	Plasmids are not sterile. For experiments where strict sterility is required, filtration with 0.22um filter is required.
RefSeq:	<u>NM_145269.5</u>
RefSeq Size:	1135 bp
RefSeq ORF:	870 bp
Locus ID:	137392
UniProt ID:	<u>A1XBS5</u>
Cytogenetics:	8q22.1
MW:	33.3 kDa
Gene Summary:	Probable regulator of ciliogenesis involved in limb morphogenesis. In cooperation with CBY1 it is involved in the recruitment and fusion of endosomal vesicles at distal appendages during early stages of ciliogenesis.[UniProtKB/Swiss-Prot Function]

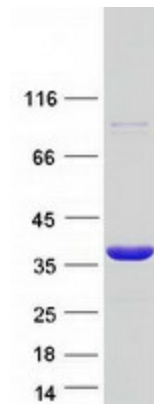
Product images:



Circular map for RC212680



Western blot validation of overexpression lysate (Cat# [LY407994]) using anti-DDK antibody (Cat# [TA50011-100]). Left: Cell lysates from untransfected HEK293T cells; Right: Cell lysates from HEK293T cells transfected with RC212680 using transfection reagent MegaTran 2.0 (Cat# [TT210002]).



Coomassie blue staining of purified FAM92A protein (Cat# [TP312680]). The protein was produced from HEK293T cells transfected with FAM92A cDNA clone (Cat# RC212680) using MegaTran 2.0 (Cat# [TT210002]).