

Product datasheet for **RC212667**

SCARF2 (NM_182895) Human Tagged ORF Clone

Product data:

Product Type:	Expression Plasmids
Product Name:	SCARF2 (NM_182895) Human Tagged ORF Clone
Tag:	Myc-DDK
Symbol:	SCARF2
Synonyms:	NSR1; SREC-II; SREC2; SRECRP-1; VDEGS
Vector:	pCMV6-Entry (PS100001)
E. coli Selection:	Kanamycin (25 ug/mL)
Cell Selection:	Neomycin



[View online »](#)

Protein Sequence: >RC212667 representing NM_182895
Red=Cloning site Green=Tags(s)

MEGAGPRGAGPARRRGAGGPPSPLLPSLLLLLLWMLPDTVAPQELNPRGRNVCRAPGSQVPTCCAGWRQ
 QGDECGIAVCEGNSTCSENEVCVRPGECRCRHGYFGANCDTKCPRQFWGPDCKELCSCHPHGQCEDVTGQ
 CTCHARRWGARCEHACQCQHGTCCHPRSGACRCEPGWWGAQCASACYCSATSRCDPQTGACLCHAGWWGRS
 CNNQCACNSSPCEQQSGRCQCRERTFGARCDRYCQCFRGRCHPVDGTCACEPGYGRKYCREPCAGFYGL
 GCRRCGQCKGQPCVVAEGRCLTCEPGWNGTKCDQPCATGFYGEGCSHRCPPCRGHACNHVTGKCTRC
 NAGWIGDRCEKCSNGTYGEDCAFVACDCSGHCDFQSGRCLCSPGVHGHPCNVTCPPGLHGADCAQACS
 CHEDTCDPVTGACHLETNQRKGVMGAGALLVLLVCLLLSLLGCCACRGGKDPTRRELSLGRKKAPHRLCG
 RFSRISMKLPRIPRLRQKLPKVVAHDLNLTNCSFLEPPSGLEQPSWSRASFSFDTTDEGPVYC
 VPHEEAPAESRDPEVPTVPAEAPAPSPVPLTPASAEAIPLPASSDERSASSVEGPGGALYARVARRE
 ARPARGEIGGLSLSPSPERRKPPPPDPATPKVSWIHGKHSAAAAGRAPSPPPPGSEAAPSPSKRRT
 PSDKSAHTVEHGSPTTRDPTPRPPGLEEATALAAPSPPRARARAAPRPLGAHGRRRSPAKRAEAASMLA
 ADVRGKTRSLGRAEVALGAQGPREKAPPQKAKRSVPPASPARAPPATETPGPEKAATDLPAPETPRKKT
 PIQKPPRKSREAAGELGRAGAPTL

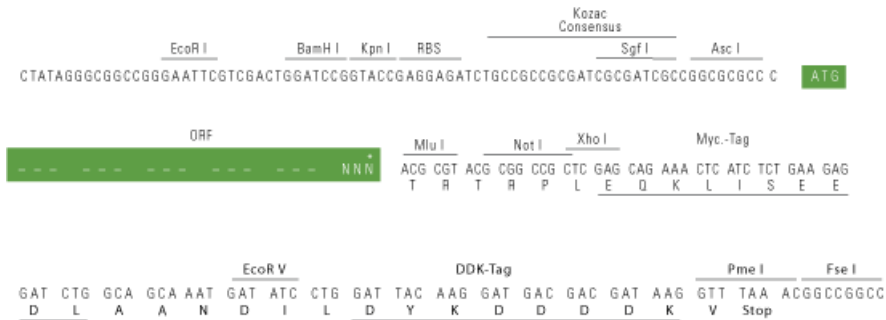
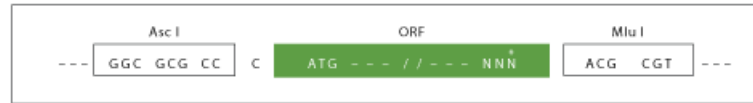
TRTRPLEQKLISEEDLAANDILDYKDDDDKV

Restriction Sites:

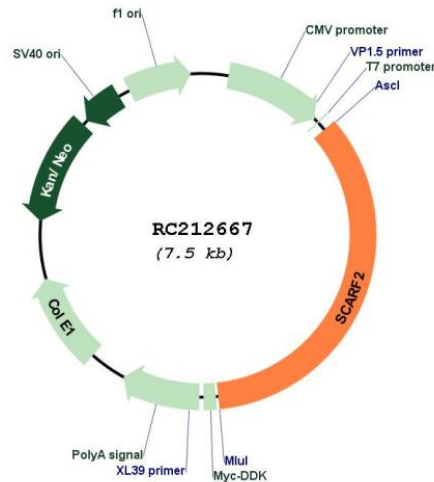
Ascl-MluI

Cloning Scheme:

Cloning sites used for ORF Shuttling:



* The last codon before the Stop codon of the ORF

Plasmid Map:


ACCN: NM_182895

ORF Size: 2595 bp

OTI Disclaimer: The molecular sequence of this clone aligns with the gene accession number as a point of reference only. However, individual transcript sequences of the same gene can differ through naturally occurring variations (e.g. polymorphisms), each with its own valid existence. This clone is substantially in agreement with the reference, but a complete review of all prevailing variants is recommended prior to use. [More info](#)

OTI Annotation: This clone was engineered to express the complete ORF with an expression tag. Expression varies depending on the nature of the gene.

Components: The ORF clone is ion-exchange column purified and shipped in a 2D barcoded Matrix tube containing 10ug of transfection-ready, dried plasmid DNA (reconstitute with 100 ul of water).

Reconstitution Method:

1. Centrifuge at 5,000xg for 5min.
2. Carefully open the tube and add 100ul of sterile water to dissolve the DNA.
3. Close the tube and incubate for 10 minutes at room temperature.
4. Briefly vortex the tube and then do a quick spin (less than 5000xg) to concentrate the liquid at the bottom.
5. Store the suspended plasmid at -20°C. The DNA is stable for at least one year from date of shipping when stored at -20°C.

RefSeq: [NM_182895.2](#), [NP_878315.1](#)

RefSeq Size: 3508 bp

RefSeq ORF: 2601 bp

Locus ID: 91179

UniProt ID: [Q96GP6](#)

Cytogenetics: 22q11.21

Protein Families: Druggable Genome

MW: 91.8 kDa

Gene Summary: The protein encoded by this gene is similar to SCARF1/SREC-I, a scavenger receptor protein that mediates the binding and degradation of acetylated low density lipoprotein (Ac-LDL). This protein has only little activity of internalizing modified low density lipoproteins (LDL), but it can interact with SCARF1 through its extracellular domain. The association of this protein with SCARF1 is suppressed by the presence of scavenger ligands. Alternatively spliced transcript variants encoding distinct isoforms have been reported. [provided by RefSeq, Jul 2008]