

Product datasheet for **RC212666**

MST4 (STK26) (NM_001042453) Human Tagged ORF Clone

Product data:

Product Type:	Expression Plasmids
Product Name:	MST4 (STK26) (NM_001042453) Human Tagged ORF Clone
Tag:	Myc-DDK
Symbol:	MST4
Synonyms:	MASK; MST4
Mammalian Cell Selection:	Neomycin
Vector:	pCMV6-Entry (PS100001)
E. coli Selection:	Kanamycin (25 ug/mL)
ORF Nucleotide Sequence:	>RC212666 representing NM_001042453 Red=Cloning site Blue=ORF Green=Tags(s)

TTTTGTAATACGACTCACTATAGGGCGGCCGGAATTCGTCGACTGGATCCGGTACCGAGGAGATCTGCC
GCC**CGATCGCC**

ATGGCCACTCGCCGGTGGCTGTCCAAGTGCCTGGGATGCAGGGGTCTAAATTATGGATAAATGAAT
ACCTGGCGGTGGTTCAGCACTGGATCTTCTCGAGCTGGTCCATTTGATGAGTTCAGATTGCTACCAT
GCTAAAGGAAATTTAAAAGGTCTGGACTATCTGCATTCAGAAAAGAAATTCACCGAGACATAAAAGCT
GCCAATGTCTTGCTCTCAGAACAAGGAGATGTTAACTTGCTGATTTGGAGTTGCTGGTCAGCTGACAG
ATACACAGATTAAGAAATACCTTTGTGGAACTCCATTTGGATGGCTCCTGAAGTTATCAACAGTC
AGCTTATGACTCAAAGCTGACATTTGGTCATTGGGAATTAAGTCTATTGAAGTACCGAAGGAGAGCCA
CCTAACTCCGATATGCATCCAATGAGAGTTCTGTTTCTATTCCAAAAACAATCCTCCAACCTTTGTTG
GAGACTTTACTAAGTCTTTAAGGAGTTTATTGATGCTTGCCTGAACAAAGATCCATCTTCGCTCTAC
AGCAAAAGAACTTCTGAAACACAAATTCATTGTAAAAATTCAAAGAAGACTTCTTATCTGACTGAACTG
ATAGATCGTTTTAAGAGATGGAAGGCAGAAGGACACAGTATGATGAATCTGATTCGAGGGCTCTGATT
CGGAATCTACCAGCAGGGAAAACAATACTCATCTGAATGGAGCTTACCACCGTACGAAAGAAGCCTGA
TCCAAAGAAAGTACAGAATGGGGCAGAGCAAGATCTTGTCAAACCCTGAGTTGTTTGTCTATGATAATC
ACACCTGCATTTGCTGAACTTAAACAGCAGGACGAGAATAACGCTAGCAGGAATCAGGCGATTGAAGAAC
TCGAGAAAAGTATTGCTGTGGCTGAAGCCGCTGTCCCGCATCACAGATAAAATGGTGAAGAACTAAT
TGAAAAATTTCAAAGTGTTCAGCAGACGAATCCCC

ACGCGTACGCGGCCGCTCGAGCAGAACTCATCTCAGAAGAGGATCTGGCAGCAATGATATCCTGGATT
ACAAGGATGACGACGATAAGGTTTAA



[View online »](#)

Protein Sequence: >RC212666 representing NM_001042453
Red=Cloning site Green=Tags(s)

MAHSPVAVQVPGMQGSKLWIIMEYLGGSALDLLRAGPFDEFQIATMLKEILKGLDYLHSEKKIHRDIKA
 ANVLLSEQGDVKLADFGVAGQLTDTQIKRNTFVGTPFWMAPEVIQQSAYDSKADIWSLGITAIELAKGEP
 PNSDMHPMRVLFILPKNNPPTLVGDFTKSFKFIDACLNKDPSFRPTAKELLKHKFIVKNSKKTSYLTEL
 IDRFRKRWKAEGHSDDSESDSEGSSESTSRENNTHPEWSFTTVRKKPDPKKVQNGAEQDLVQTL SCLSMII
 TPAFAELKQQDENNASRNQAIIEELEKSIAYAEAACPGITDKMVKKLIEKFQKCSADESP

TRTRPLEQKLISEEDLAANDILDYKDDDDKV

Chromatograms: https://cdn.origene.com/chromatograms/mk8053_c02.zip

Restriction Sites: SgfI-MluI

Cloning Scheme:

Cloning sites used for ORF Shuttling:



* The last codon before the Stop codon of the ORF

ACCN: NM_001042453

ORF Size: 1017 bp

OTI Disclaimer: The molecular sequence of this clone aligns with the gene accession number as a point of reference only. However, individual transcript sequences of the same gene can differ through naturally occurring variations (e.g. polymorphisms), each with its own valid existence. This clone is substantially in agreement with the reference, but a complete review of all prevailing variants is recommended prior to use. [More info](#)

OTI Annotation: This clone was engineered to express the complete ORF with an expression tag. Expression varies depending on the nature of the gene.

Components: The ORF clone is ion-exchange column purified and shipped in a 2D barcoded Matrix tube containing 10ug of transfection-ready, dried plasmid DNA (reconstitute with 100 ul of water).

Reconstitution Method:

1. Centrifuge at 5,000xg for 5min.
2. Carefully open the tube and add 100ul of sterile water to dissolve the DNA.
3. Close the tube and incubate for 10 minutes at room temperature.
4. Briefly vortex the tube and then do a quick spin (less than 5000xg) to concentrate the liquid at the bottom.
5. Store the suspended plasmid at -20°C. The DNA is stable for at least one year from date of shipping when stored at -20°C.

RefSeq: [NM_001042453.2](#)

RefSeq Size: 3121 bp

RefSeq ORF: 1020 bp

Locus ID: 51765

UniProt ID: [Q9P289](#)

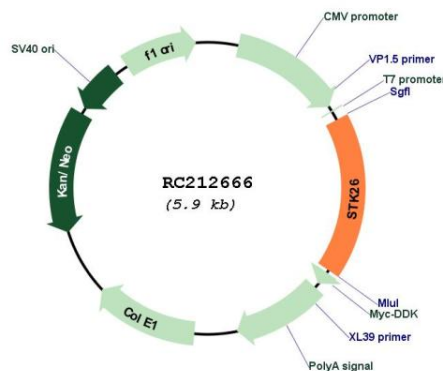
Cytogenetics: Xq26.2

Protein Families: Druggable Genome, Protein Kinase

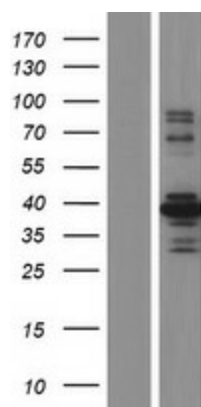
MW: 37.6 kDa

Gene Summary: The product of this gene is a member of the GCK group III family of kinases, which are a subset of the Ste20-like kinases. The encoded protein contains an amino-terminal kinase domain, and a carboxy-terminal regulatory domain that mediates homodimerization. The protein kinase localizes to the Golgi apparatus and is specifically activated by binding to the Golgi matrix protein GM130. It is also cleaved by caspase-3 in vitro, and may function in the apoptotic pathway. Several alternatively spliced transcript variants of this gene have been described, but the full-length nature of some of these variants has not been determined. [provided by RefSeq, Jul 2008]

Product images:



Circular map for RC212666



Western blot validation of overexpression lysate (Cat# [LY420913]) using anti-DDK antibody (Cat# [TA50011-100]). Left: Cell lysates from untransfected HEK293T cells; Right: Cell lysates from HEK293T cells transfected with RC212666 using transfection reagent MegaTran 2.0 (Cat# [TT210002]).